



# Claridge

TURN WORKSPACES INTO IDEA PLACES

## Glass Surfaces CARE & MAINTENANCE



- Dry Erase markers can be wiped off using a standard eraser, microfiber eraser cloth or any dry cloth. Permanent markers may be removed using a standard glass cleaner.
- Periodic cleaning may be performed using glass cleaner. Avoid using abrasive type cleaners as they may dull or “pit” the surface of the glass.
- Always use a soft cloth, towel or microfiber cloth from Claridge to clean your Claridge Glass writing surface.
- Avoid cleaning glass if the surface is hot or in direct sunlight.
- Avoid leaving tape or other adhesives on your glass writing surface for long periods of time.

### Recommended Accessories:



#### Markerboard Cleaner

Product Code: LCS683

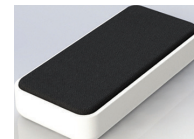
- 8 oz. pump spray
- Cleans and restores LCS<sup>3</sup> Porcelain enamel surfaces



#### Dry Erase Cloth

Product Code: ECM227E - each  
ECM227D - 1 dozen

- 12"x12" Microfiber eraser cloth with a small magnet
- Erases cleanly with no smearing
- Reduces marker residue build-up



#### Magnetic Eraser

Product Code: MGM-ME1

- Black felt eraser with strong rare earth magnets
- Measures 4-1/2" long, 2-1/8" wide and 7/8" thick



# Claridge

800.434.4610  
claridgeproducts.com

The Writing Surface Experts

V11019