

### MLC Melamine

- Claridge Melamine Markerboard surfaces can be cleaned using clean water and a soft, clean, non-abrasive cloth. When additional cleaning is required, Claridge recommends using only cleaners that have been tested thoroughly on our products. These would include Claridge 683 Board Cleaner, Windex, or similar glass board cleaner. Boards may be cleaned as often as required without causing damage to the surface.
- Do not use abrasives, alcohol, alcohol wipes, or alcohol-based cleaners on the Melamine surface as use of these products has been known to damage the writing surface.
- Repeated long term use of some disinfectants may cause surface damage as well. The use of improper cleaners will void the warranty.

### Recommended Accessories:



#### Markerboard Cleaner

Product Code: LCS683

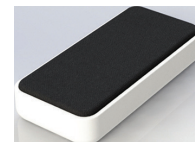
- 8 oz. pump spray
- Cleans and restores LCS<sup>3</sup> Porcelain enamel surfaces



#### Dry Erase Cloth

Product Code: ECM227E - each  
ECM227D - 1 dozen

- 12"x12" Microfiber eraser cloth with a small magnet
- Erases cleanly with no smearing
- Reduces marker residue build-up



#### Magnetic Eraser

Product Code: MGM-ME1

- Black felt eraser with strong rare earth magnets
- Measures 4-1/2" long, 2-1/8" wide and 7/8" thick