



NEW CONSTRUCTION & RENOVATION

2021 CATALOG

THE WRITING SURFACE EXPERTS®



**THE CLARIDGE  
NAME HAS BEEN  
SYNONYMOUS WITH  
QUALITY, SERVICE  
AND INNOVATION.**

Our products can be found in gleaming new offices, prestigious colleges and universities, respected hospitals and schools across the country. Claridge offers a complete set of solutions for the new world of work – no matter what type of work you do.

From the workplace to the classroom, the emphasis today is on performance, productivity, and a pleasing environment. Claridge visual display products and accessories offer unmatched performance and high style. A state-of-the-art production facility enables our skilled team to control quality at every step in the process. In addition to offering a broad selection of standard colors, surfaces and finishes, we can custom-craft most products to perfectly suit any space or task. Let our friendly and knowledgeable customer service staff help you create exactly what you need.

Contemporary business operates at a lightning pace, so we maintain a wide variety of standard product lines in stock for fast shipping and delivery. For custom product orders, Claridge Priority Response and On-Time Shipping provide a firm ship date.

We also conduct a number of “green” initiatives—from in-house recycling programs to using renewable resources and alternative materials—to reduce our environmental footprint and minimize exposure to harmful substances. We listen and react to our customers’ needs and concerns.

At Claridge, we work to earn your trust and satisfaction from start to finish. That’s the way we do business — today and always.

## TABLE OF CONTENTS

4	Series Boards Information	26	Vertical Sliding Units - Floor Mounted
5	Series Boards 1, 3, 4, 5, 8, 185, Aspire	27	Concealment Sliding Marker Walls
14	Modular Boards	28	Marker Walls
15	Graphic Boards	29	Tack Walls
16	Aluminum Trim Detail Applications	30	Bulletin Board Cabinets
18	LCS Panels/Skins	31	Display Cases
19	Tackable Surfaces	32	Map Rails/ Display Rails
22	Glass Markerboards	37	Accessories
24	Horizontal Sliding Systems - Wall-Mounted	38	Color Options
25	Vertical Sliding Systems - Wall-Mounted	39	Specification Information

## THE WRITING SURFACE EXPERTS®

Claridge LCS<sup>3</sup> Porcelain® and Claridge Glass are the global choice for visual display writing surfaces. These incredibly smooth and clean performing writing surfaces provide a great writing experience that will stand the test of time.

### LCS<sup>3</sup> Porcelain Markerboards

- Porcelain enamel steel markerboards provide a sustainable, ultra-smooth and lifestimewarranted surface that is scratch, stain and bacteria resistant
- Available in three colors, LCS<sup>3</sup> can be used as a projection surface; accepts magnetic aids
- The resulting porcelain surface is GREENGUARD™, Cradle-to-Cradle™ and SCS Indoor Advantage™ certified

### Porcelain Chalkboard Surfaces

- Porcelain enamel steel chalkboard surface carries a Life of the Building writing surface warranty; available in three colors
- Writing surface has high resistance to impact damage, abrasion, scratching and fading
- Matte finish provides maximum contrast for heightened visibility; surface erases clean and retains minimal chalk dust

### Claridge Glass Markerboards

- Ultra-clear Claridge Glass never stains or ghosts
- Three mounting options: Invisi-Mount, Standoff Edge or Standoff Through Glass Mounts
- Magnetic surface is great for tacking notes and collaboration
- Custom options and sizes available
- Claridge Glass is GREENGUARD Certified, eco-friendly, and emits no VOC's

### MARKERBOARDS: COLOR OPTIONS

100 White LCS <sup>3</sup>	101 Light Gray LCS <sup>3</sup>	102 Beige LCS <sup>3</sup>
-------------------------------	------------------------------------	-------------------------------

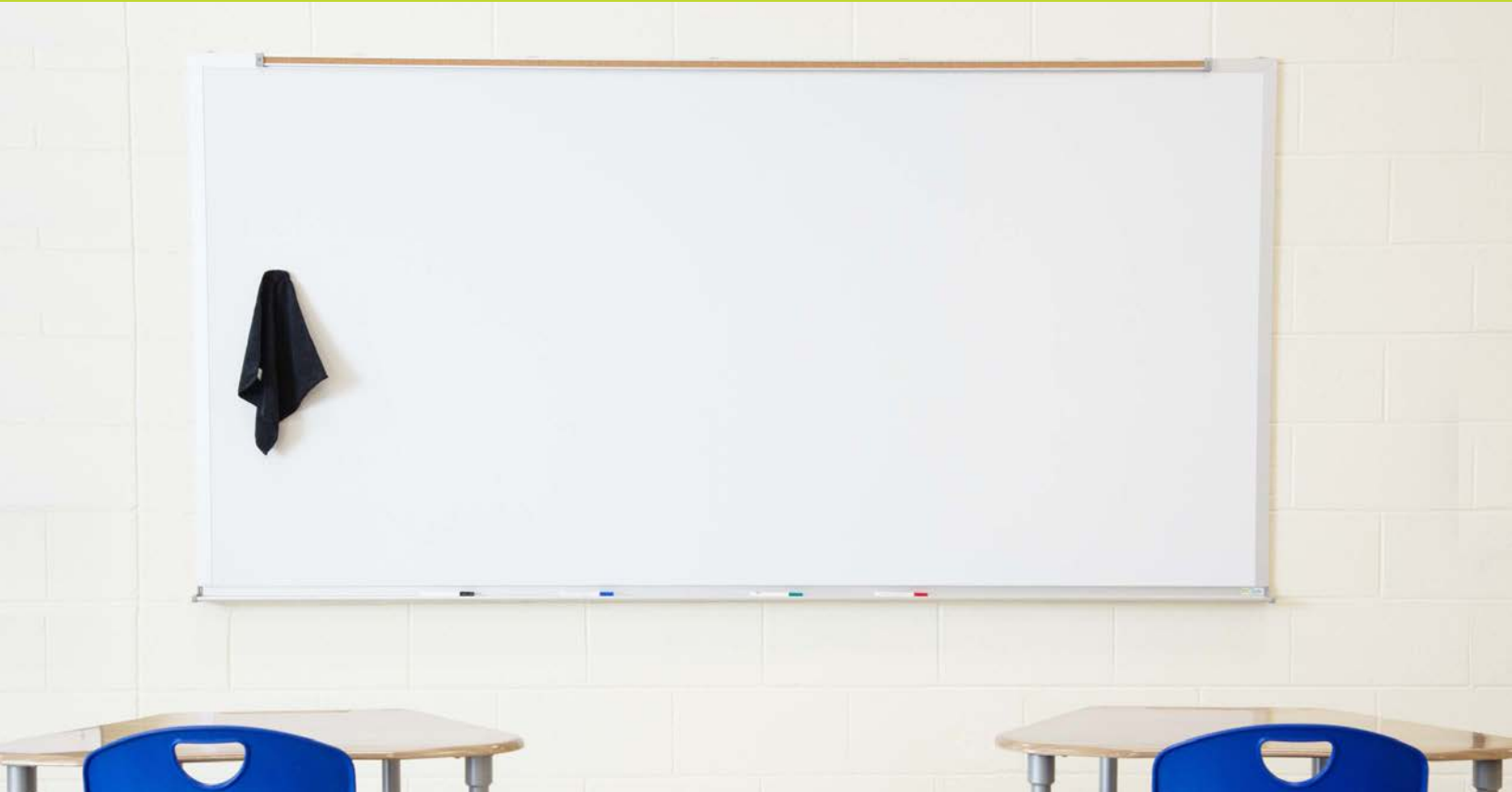
### NP<sup>3</sup> CHALKBOARDS: COLOR OPTIONS

500 Green	501 Black	502 Gray
-----------	-----------	----------

### MAGNETIC GLASS MARKERBOARDS: STANDARD COLOR OPTIONS

Brilliant White	Calm White	RAL1015 Light Ivory	RAL7047 Telegrey	RAL7004 Signal Gray	RAL6027 Light Green	RAL4005 Blue Lilac	RAL5012 Light Blue	RAL2008 Red Orange	RAL3003 Ruby Red
-----------------	------------	------------------------	---------------------	------------------------	------------------------	-----------------------	-----------------------	-----------------------	---------------------

# SERIES MARKERBOARDS, CHALKBOARDS AND TACKBOARDS



## Features:

- Writing Surface: LCS<sup>3</sup> Porcelain Markerboard and NP<sup>3</sup> Chalkboard
- Tackboards: Claridge Cork, Fabricork, Guilford of Maine FR701 Fabric, Hook-Fab, and Tan Nucork
- Satin anodize aluminum frame
- Maximum length, 16'0"; maximum height - Type A and Type CO units - 4'0"
- O.A. panel thickness approx. 1/2"
- LCS<sup>3</sup> Markerboards are GREENGUARD Certified

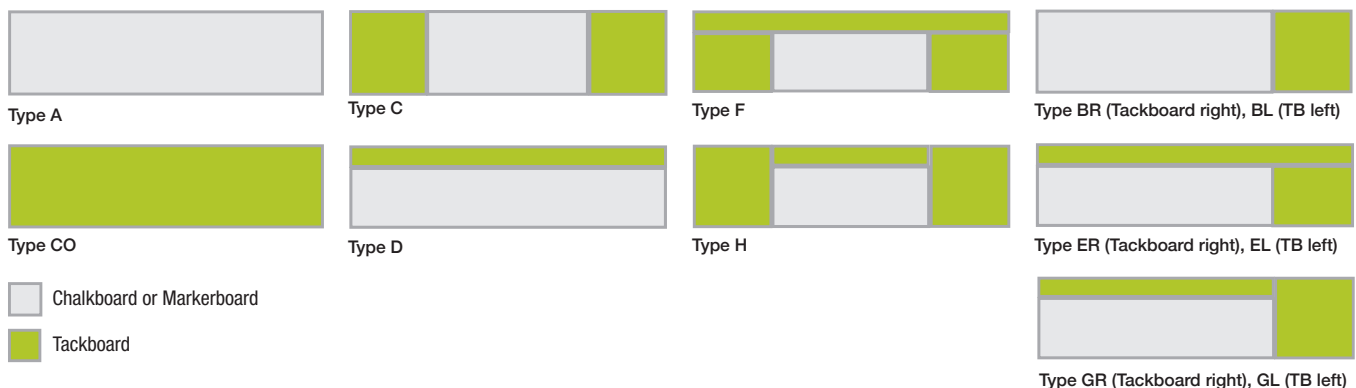
## Options:

- Color anodize or powder coat finish aluminum frames
- Radius corners available, Series 4 units

Finished size of units is 1/4" larger in height and width than sizes listed. If exact overall size is required, specify when ordering. Installation using 16A adhesive is recommended. Screws or wall anchors are not included. Freight class 70.

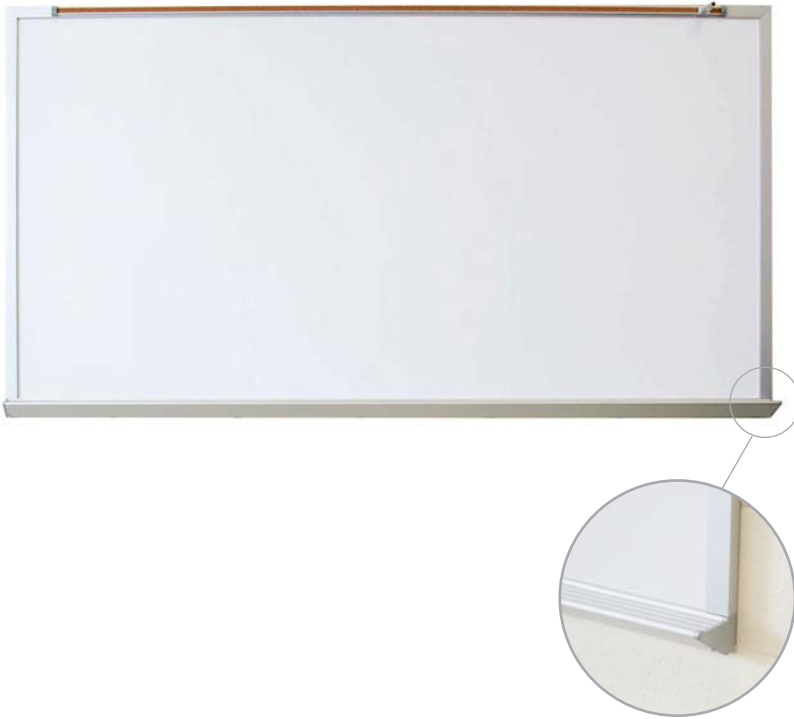
Visit [claridgeproducts.com/resources](http://claridgeproducts.com/resources) for CAD library and specifications.

## Typical Markerboard, Chalkboard & Tackboard Arrangements



# SERIES MARKERBOARDS, CHALKBOARDS AND TACKBOARDS

## Series 1

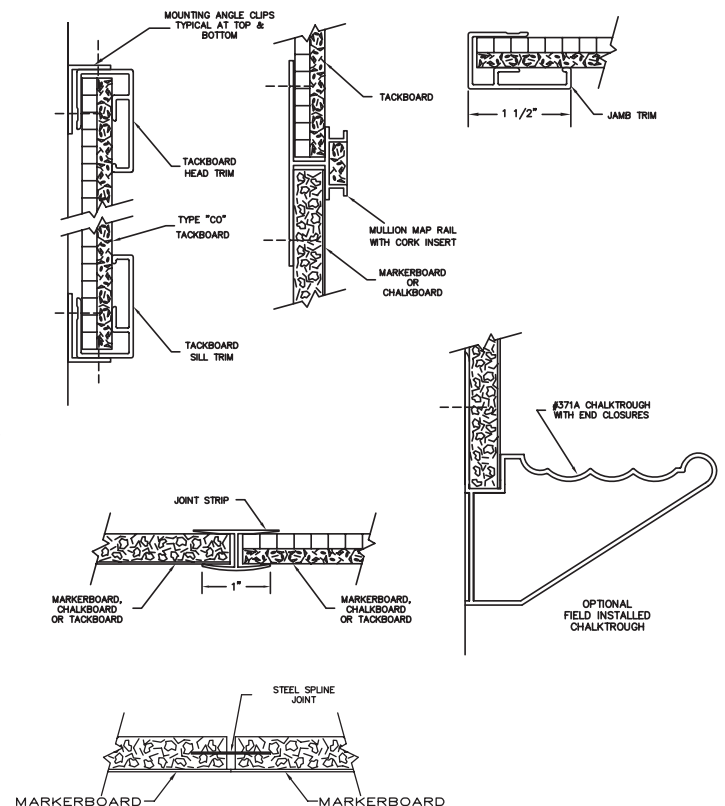
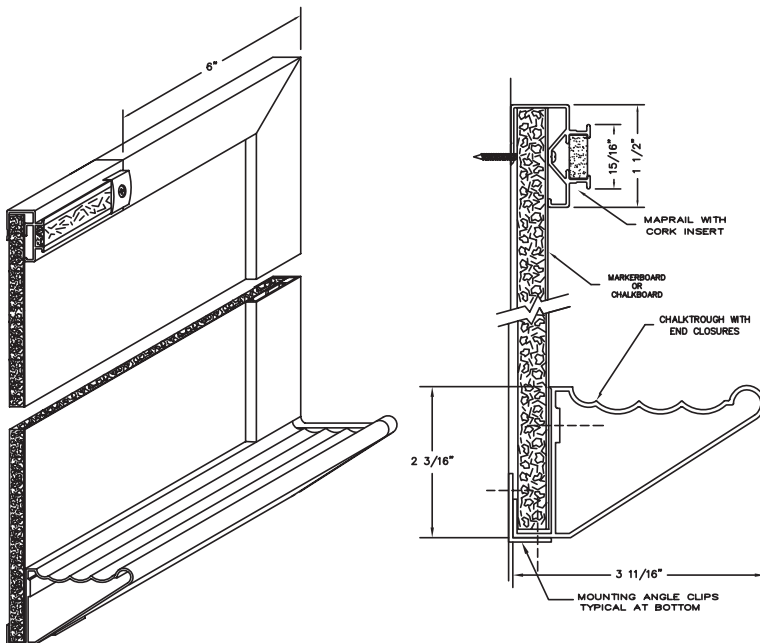
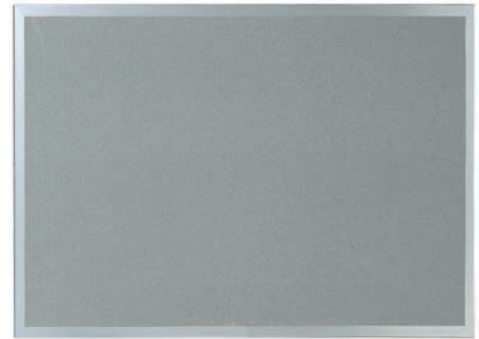


### Features:

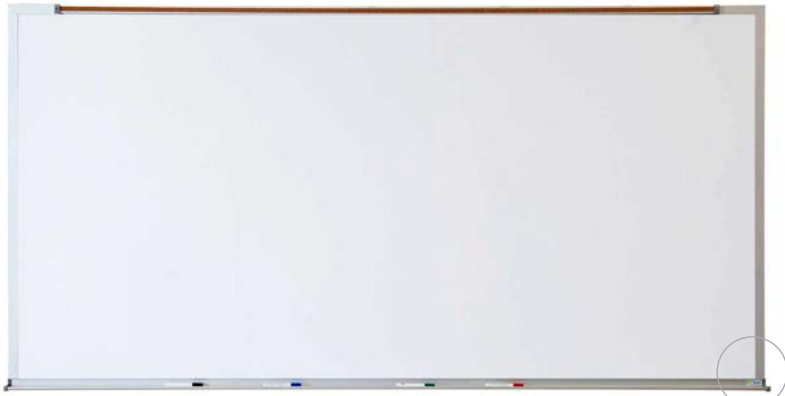
- Perimeter trim is 1 1/2" wide
- Type A units have screw through map rail at top; angle clips for bottom
- Type CO and Combos – angle clips 2' on center top and bottom

### Size (HxW)

2' x 3', 4' x 2', 4' x 3', 4' x 4', 4' x 5', 4' x 6', 4' x 8',  
4' x 10', 4' x 12', 4' x 14', 4' x 16'



## Series 3

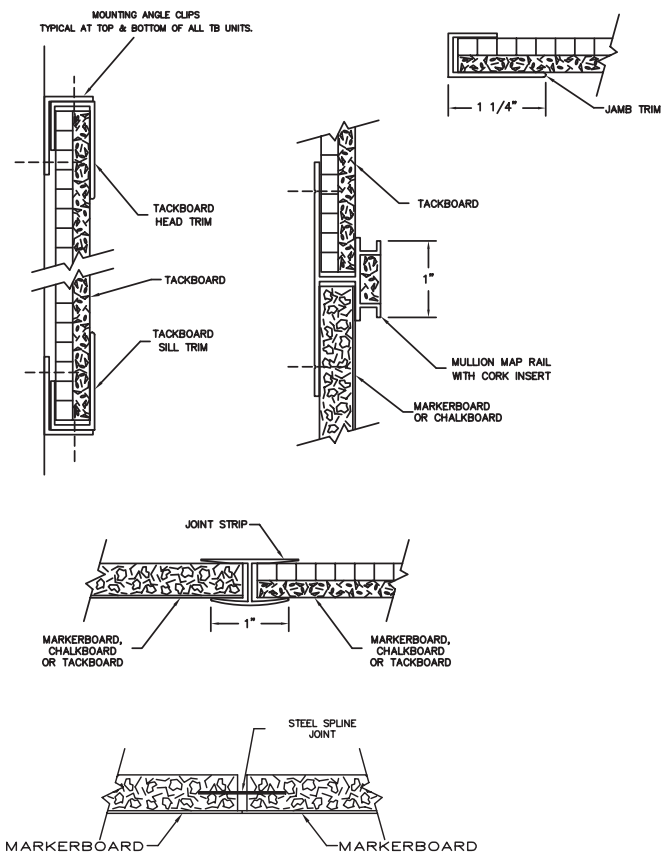
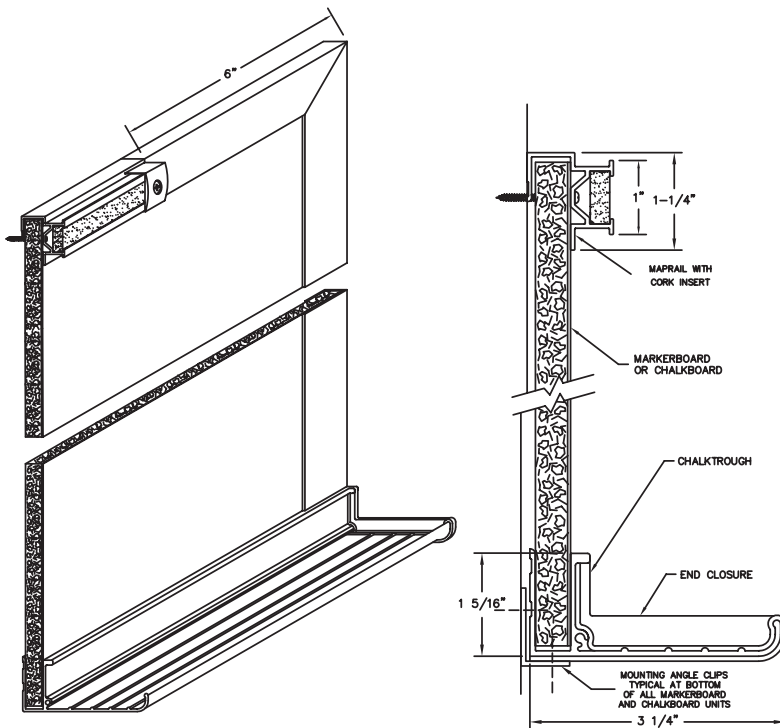
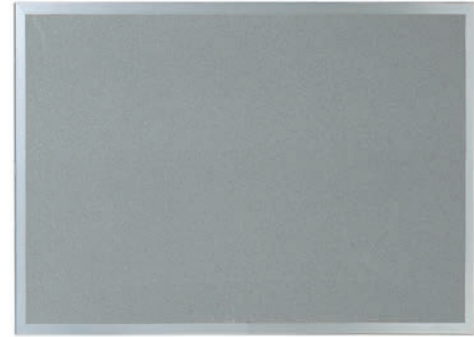


### Features:

- Perimeter trim is 1-1/4" wide
- Type A units have screw-through map rail at top; angle clips for bottom
- Type CO and Combos – angle clips, 2' on center, top and bottom

### Size (HxW)

2' x 3', 4' x 2', 4' x 3', 4' x 4', 4' x 5', 4' x 6', 4' x 8', 4' x 10', 4' x 12', 4' x 14', 4' x 16'





## Series 4

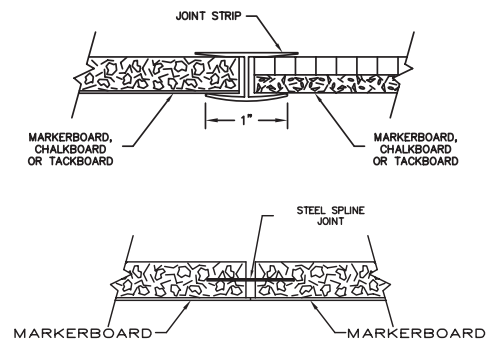
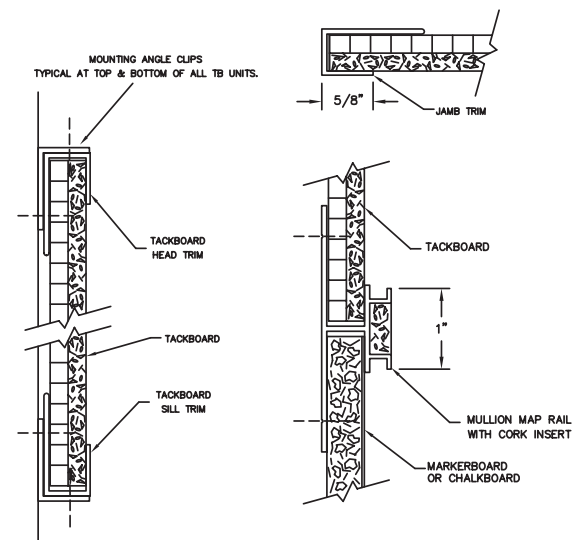
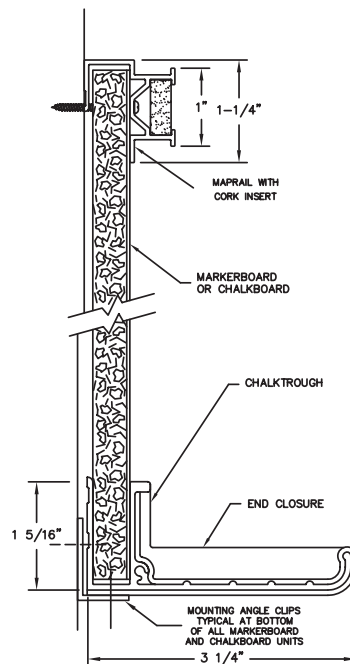
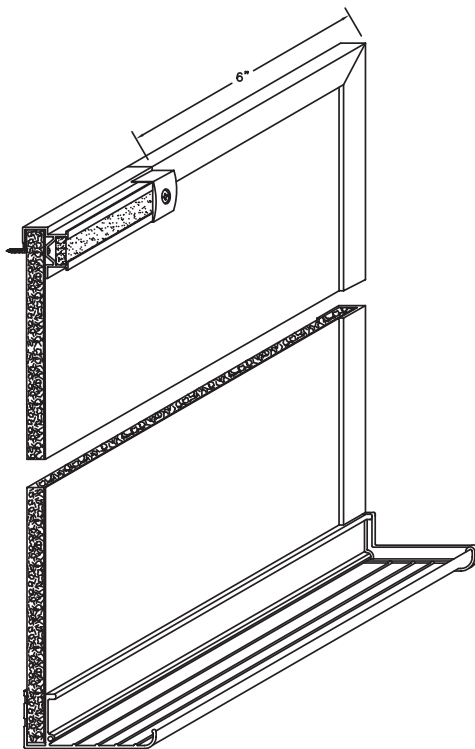


### Features:

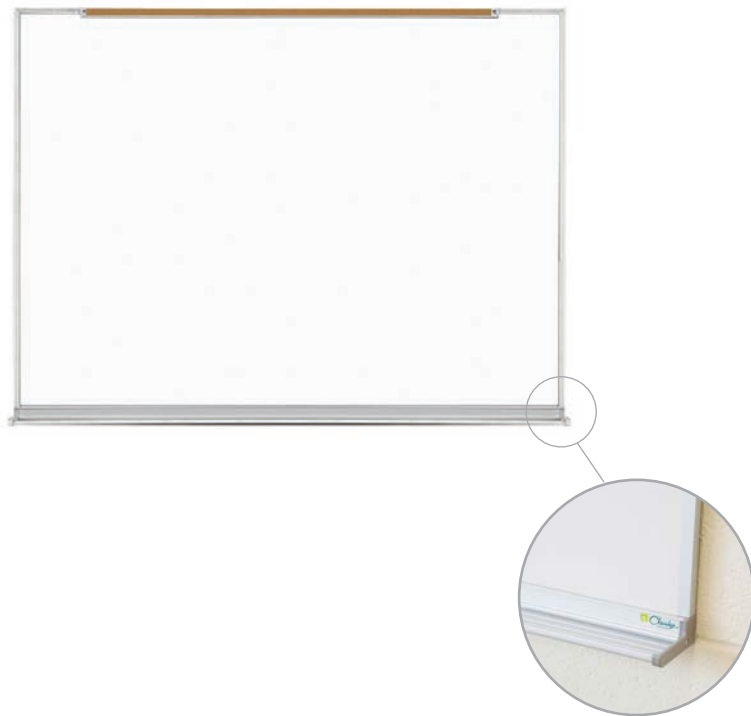
- Perimeter trim is 5/8" wide
- Type A units have screw-through map rail at top; angle clips for bottom
- Type CO and Combos – angle clips, 2' on center, top and bottom

### Size (HxW)

2' x 3', 4' x 2', 4' x 3', 4' x 4', 4' x 5', 4' x 6', 4' x 8', 4' x 10', 4' x 12', 4' x 14', 4' x 16'



## Series 5

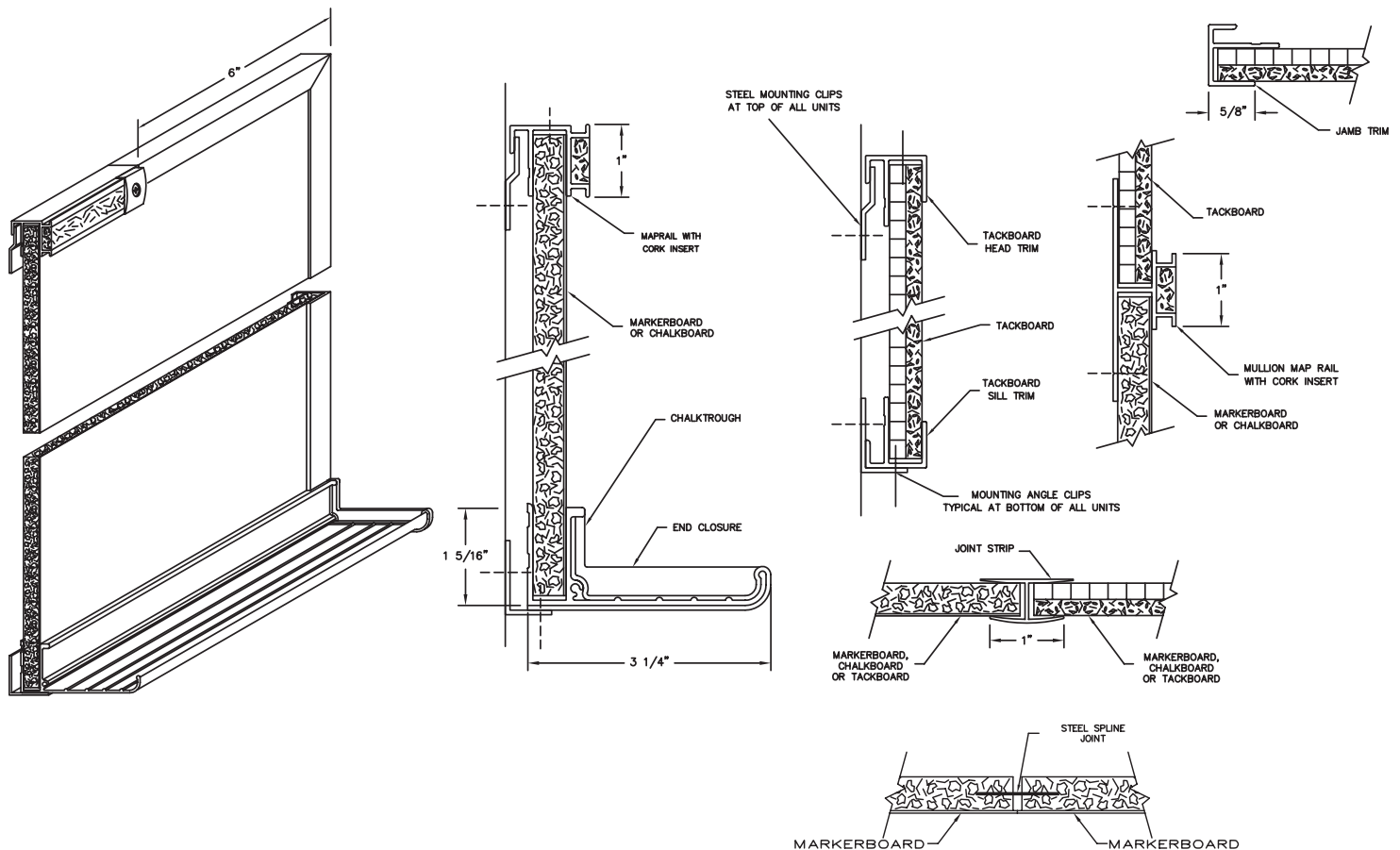


### Features:

- Perimeter trim is 5/8" wide
- Furnished with steel mounting clips at top and angle clips at bottom, 2' on center

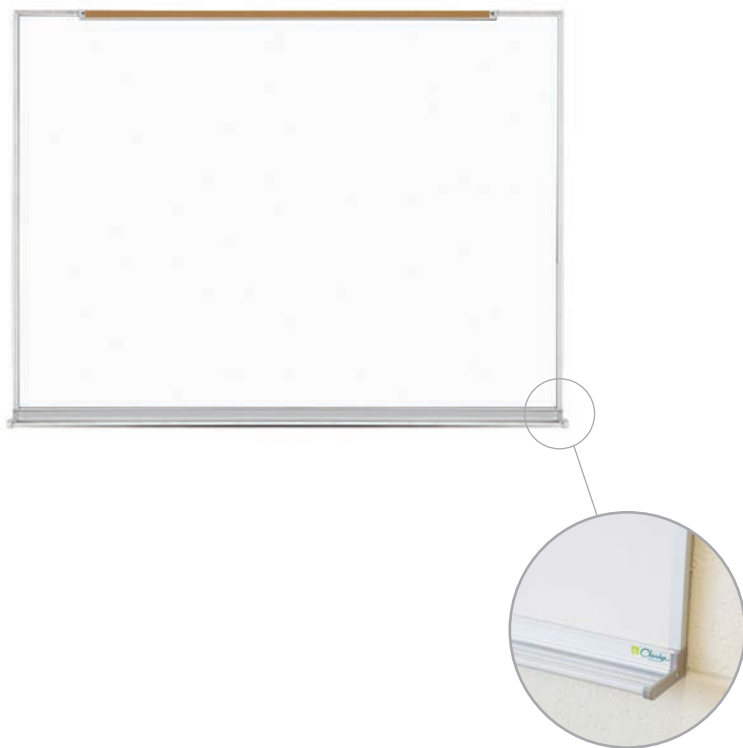
### Size (HxW)

2' x 3', 4' x 2', 4' x 3', 4' x 4', 4' x 5', 4' x 6', 4' x 8',  
4' x 10', 4' x 12', 4' x 14', 4' x 16'





## Series 8

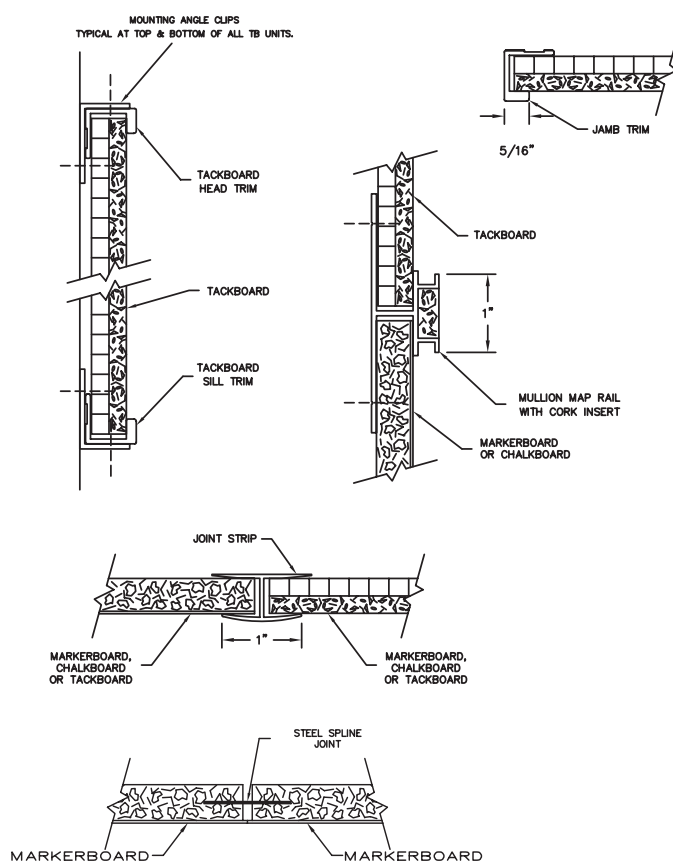
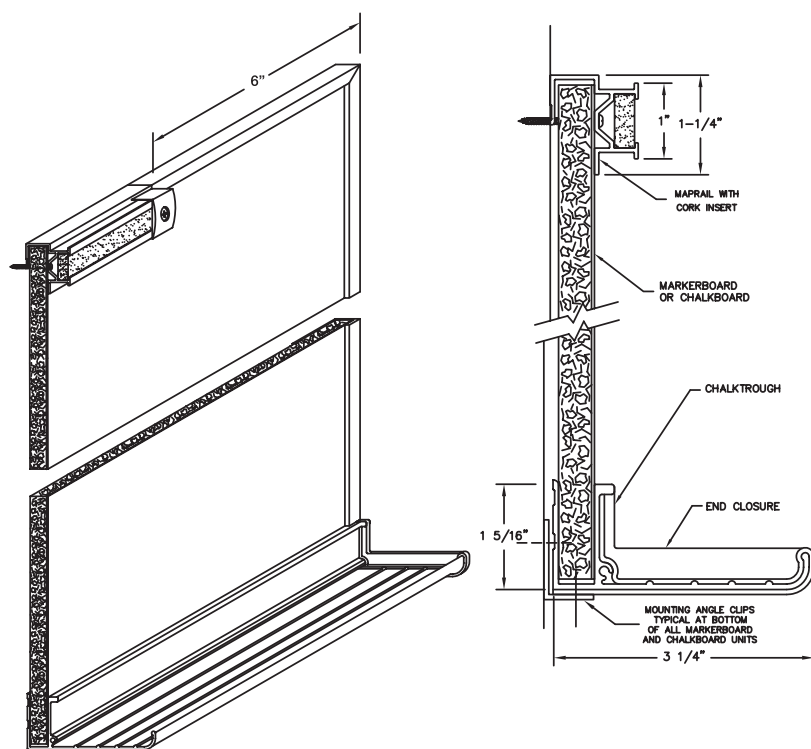


### Features:

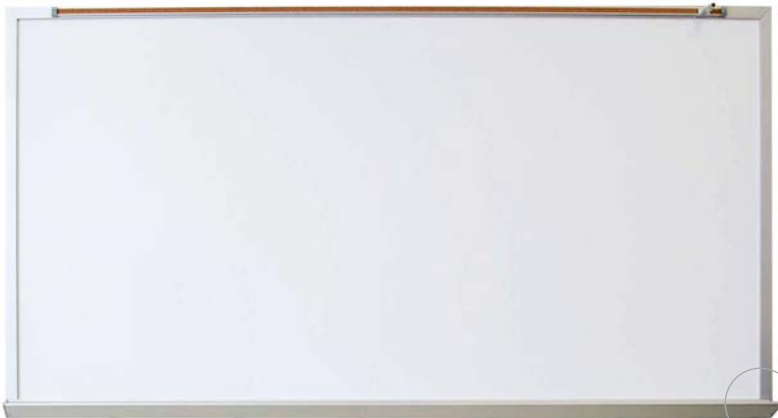
- Perimeter trim is 5/16" wide
- Type A units have screw-through map rail at top; angle clips for bottom
- Type CO and Combos – angle clips, 2' on center, top and bottom

### Size (HxW)

2' x 3', 4' x 2', 4' x 3', 4' x 4', 4' x 5', 4' x 6', 4' x 8',  
4' x 10', 4' x 12', 4' x 14', 4' x 16'



## Series 185



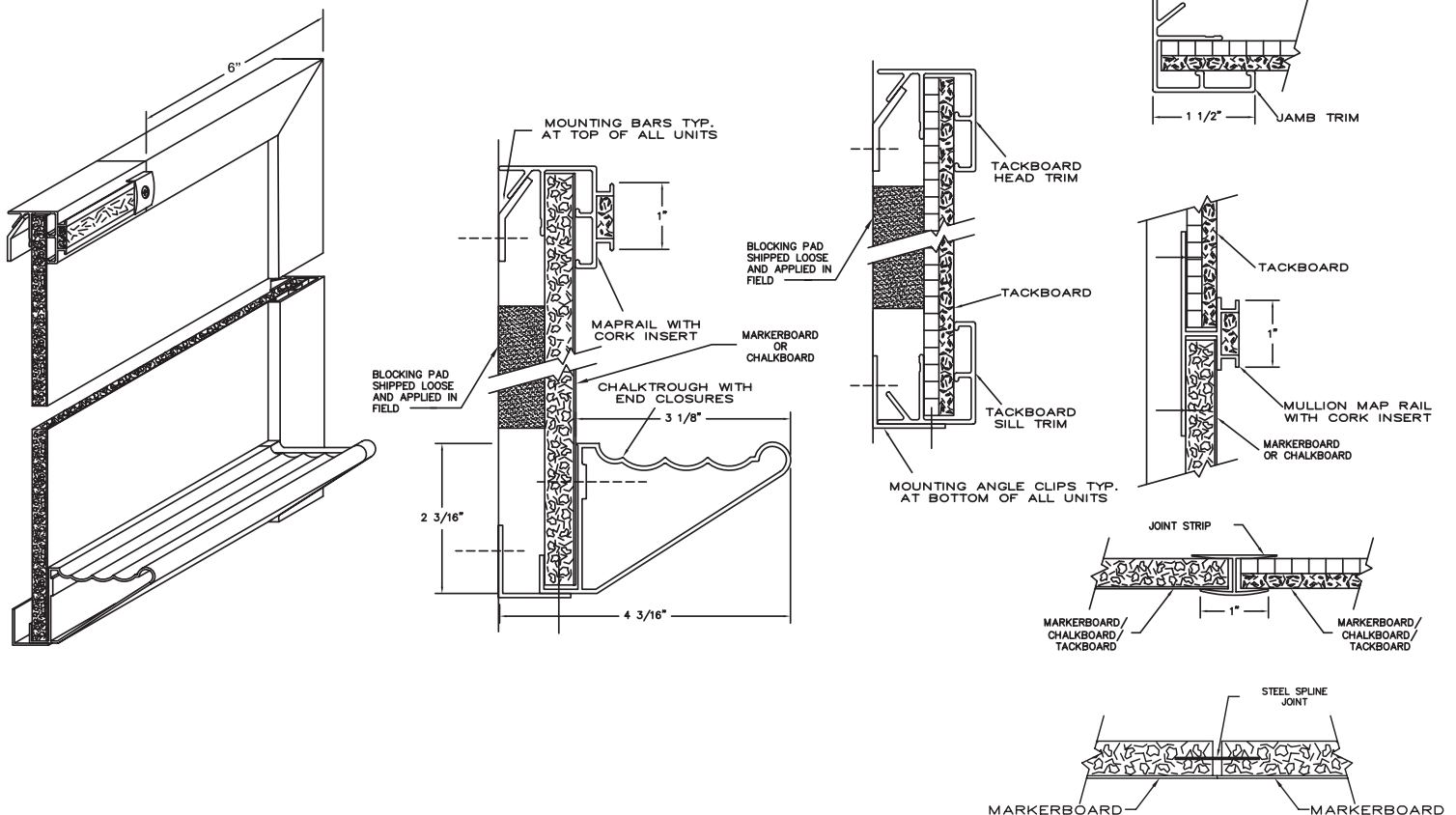
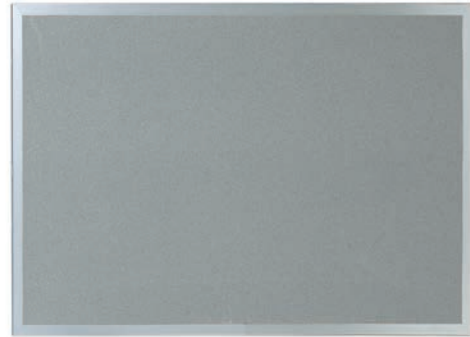
### Features:

- Perimeter trim is 1-1/2" wide
- Furnished with Z-bar clips for top and angle clips for bottom, 2' on center

**Note:** Necessary 12" square, 1/2" Duracore blocking pads are furnished

### Size (HxW)

2' x 3', 4' x 2', 4' x 3', 4' x 4', 4' x 5', 4' x 6', 4' x 8', 4' x 10', 4' x 12', 4' x 14', 4' x 16'



## Aspire

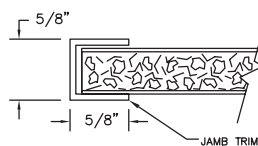
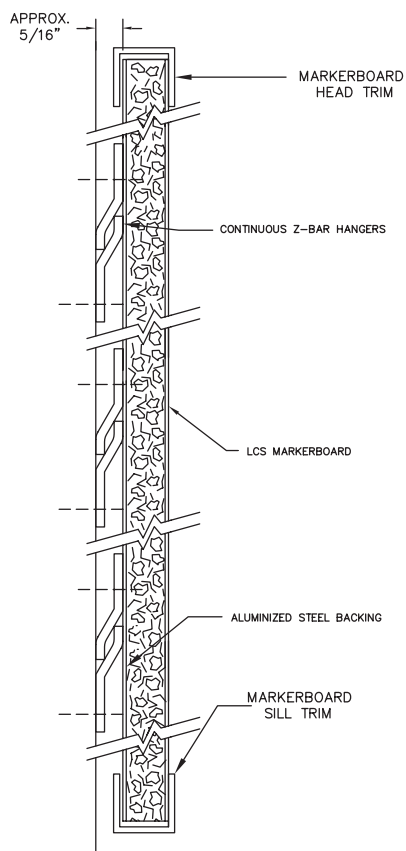


### Features:

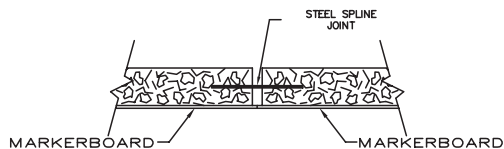
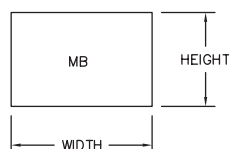
- Perimeter trim is 5/8" wide
- Aluminum frame all four sides; mitered corners
- Sizes to support images up to 100" diagonal
- Balance panel provides flatness required to be compatible with all major ultra-short throw interactive projector brands

### Size (HxW)

4' x 6', 4' x 8', 4' x 10', 4' x 12', 5' x 6', 5' x 8'



### TYPICAL ELEVATION



## Modular Units



### MOD2 Units - Markerboard or Chalkboard

- Porcelain enamel writing surface in either markerboard and chalkboard
- Map rail, tray and trim are satin anodize aluminum

Number	Panel	Size (HxW)	Weight
MOD2L-3	LCS	3' x 4'	42 lbs.
MOD2L-4	LCS	4' x 4'	56 lbs.
MOD2L-6	LCS	4' x 6'	84 lbs.
MOD2L-8	LCS	4' x 8'	112 lbs.
MOD2V-3	Chalkboard	3' x 4'	42 lbs.
MOD2V-4	Chalkboard	4' x 4'	56 lbs.
MOD2V-6	Chalkboard	4' x 6'	84 lbs.
MOD2V-8	Chalkboard	4' x 8'	112 lbs.

### MOD1 Units - Combination Boards

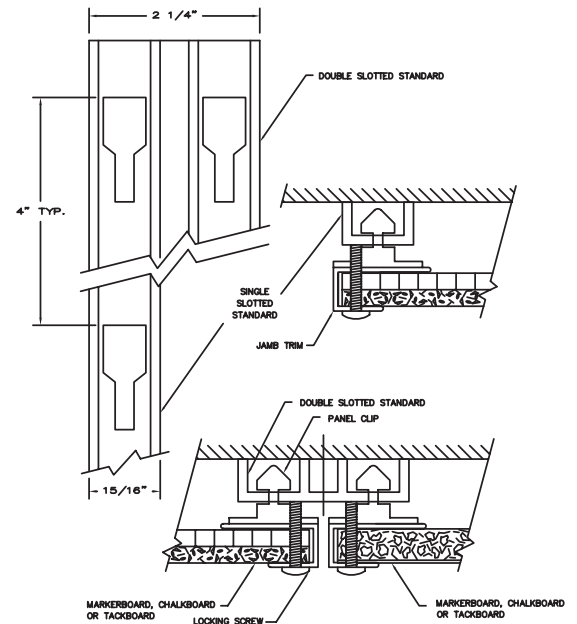
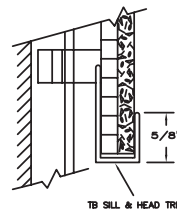
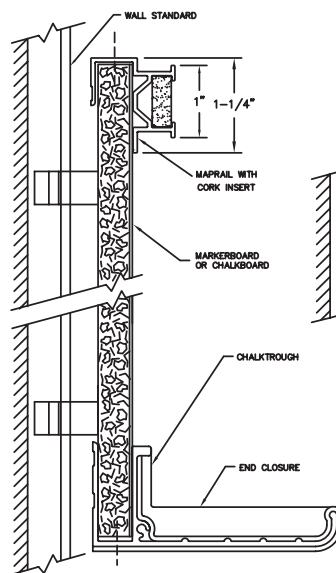
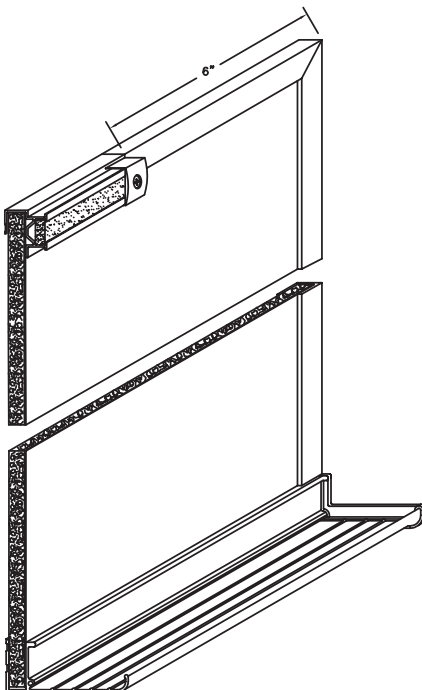
- 36" Markerboard or Chalkboard with 12" Tackboard above
- Satin anodize aluminum trim

Number	Panel	Size (HxW)	Weight
MOD1L-4	LCS/Cork	4' x 4'	56 lbs.
MOD1L-6	LCS/Cork	4' x 6'	84 lbs.
MOD1L-8	LCS/Cork	4' x 8'	112 lbs.
MOD1V-4	CB/Cork	4' x 4'	56 lbs.
MOD1V-6	CB/Cork	4' x 6'	84 lbs.
MOD1V-8	CB/Cork	4' x 8'	112 lbs.

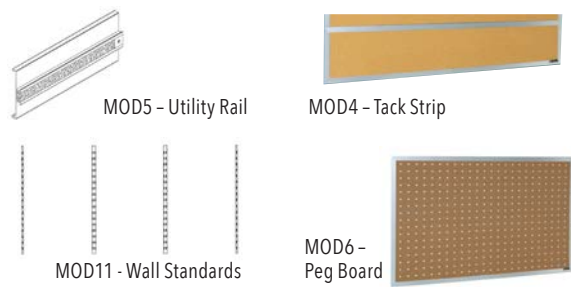
### MOD3 Units - Bulletin Boards

- Tackboard available in Claridge Cork, Fabricork, or Designer Fabric. Specify material and color.
- Satin anodize aluminum trim

Number	Panel	Size (HxW)	Weight
MOD3C-3	Claridge Cork	3' x 4'	36 lbs.
MOD3C-4	Claridge Cork	4' x 4'	48 lbs.
MOD3C-6	Claridge Cork	4' x 6'	72 lbs.
MOD3C-8	Claridge Cork	4' x 8'	96 lbs.
MOD3F-3	Fabricork	3' x 4'	18 lbs.
MOD3F-4	Fabricork	4' x 4'	24 lbs.
MOD3F-6	Fabricork	4' x 6'	36 lbs.
MOD3F-8	Fabricork	4' x 8'	48 lbs.
MOD3D-3	Designer Fabric	3' x 4'	18 lbs.
MOD3D-4	Designer Fabric	4' x 4'	24 lbs.
MOD3D-6	Designer Fabric	4' x 6'	36 lbs.
MOD3D-8	Designer Fabric	4' x 8'	48 lbs.



## Modular Boards & Wall Standards



### Features:

#### Modular Boards and Accessories

- MOD4 tackboard with aluminum trim
- MOD5 aluminum utility rail. Accepts map hooks, roller brackets and flag holders
- MOD6 pegboard. Holes punched 1" O.C. Aluminum trim

#### Modular Wall Standards – Single (MOD 11S) & Double (MOD11D)

Number	Size (HxW)	Weight
MOD4	16" x 48"	18 lbs.
MOD5	3" x 48" x 1"	4 lbs.
MOD6	48" x 48"	34 lbs.
MOD11S	Single	6 lbs.
MOD11D	Double	6 lbs.

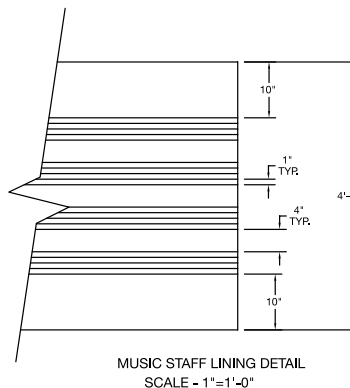
- 72" Aluminum wall standards
- Fasten directly to the wall on 4'0" centers
- Standards are normally erected 14" from floor

## Custom Lined Boards

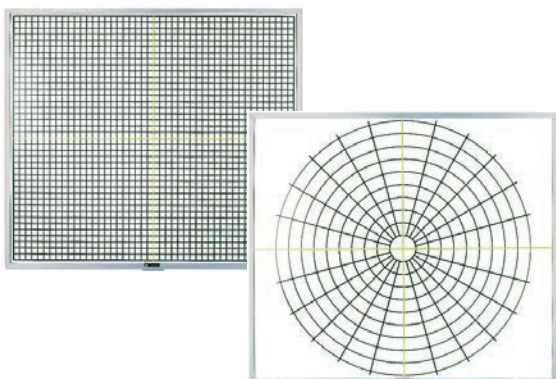


### Features:

- Permanently lined in your choice of 1/16" or 1/8" thick lines in black, blue, red, yellow and white
  - Fused-on letters are available in sizes from 1/2" to 4"
  - Will accept magnets
  - Standard ruling for music lines, treble and bass clef notes, rectangular and polar coordinates, and 1" x 1" and 1" x 2" grids available
  - Submit specifications and/or sketch for quote.
- Shop drawings may be required.



## RA16L & PC16L Math Room Markerboards: 5/8" Face Trim



### Features:

- White porcelain enamel steel writing surface
- RA16 Rectangular Coordinate Graph System (1" squares; X and Y axis in yellow)
- Polar Coordinate Graph System (ten concentric circles two inches apart; 15 degree graduations; 0-180 degrees and 90-270 degrees in yellow)
- Keyhole hangers

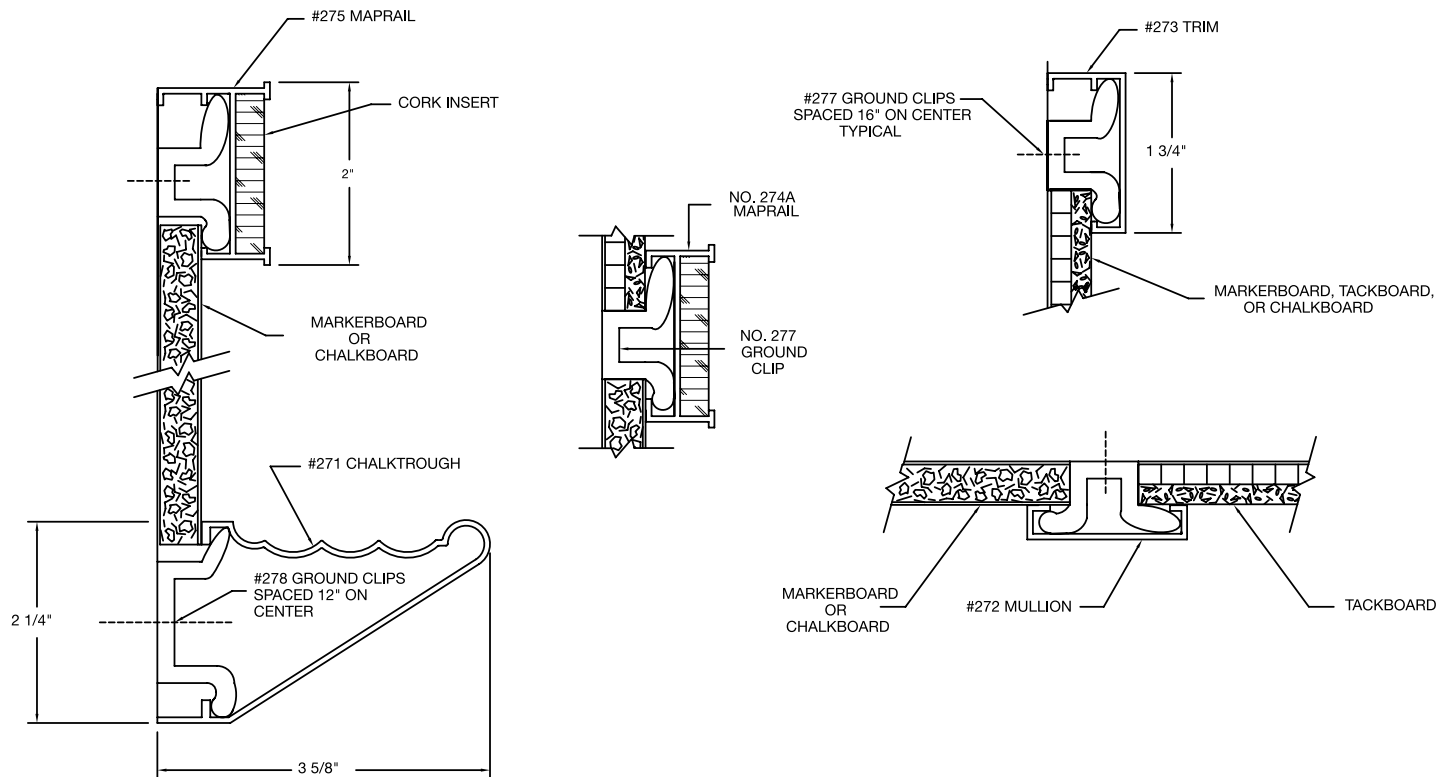
### Option:

Chalkboard in lieu of markerboard; specify color. Not Quick Ship.

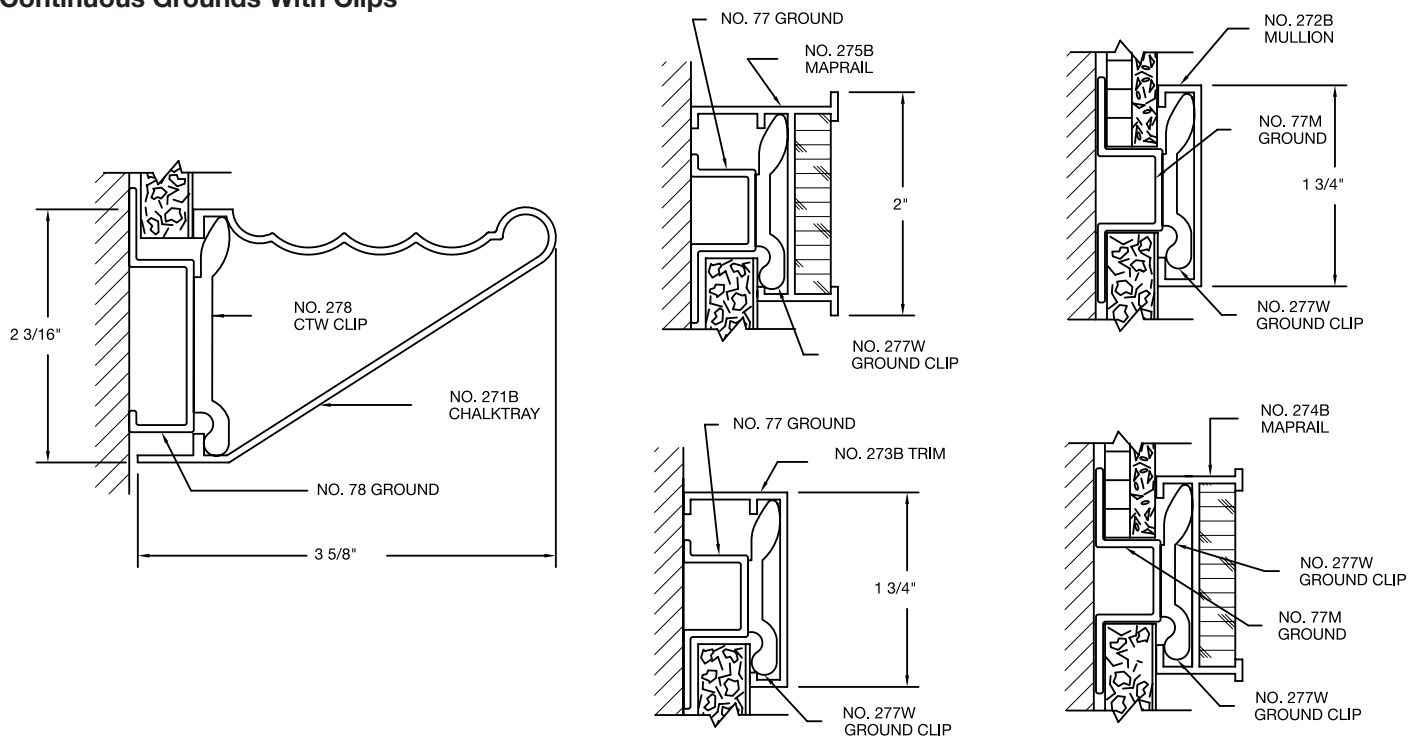
Number	Size (HxW)	Weight
RA16L	3'6" x 4'	50 lbs.
PC16L	3'6" x 4'	50 lbs.

## Snap On Application

The most versatile of the field assembled trims, snap-on trim, with its wide face and no visible fasteners, adjusts to job conditions and joins in a neat, precision fit.



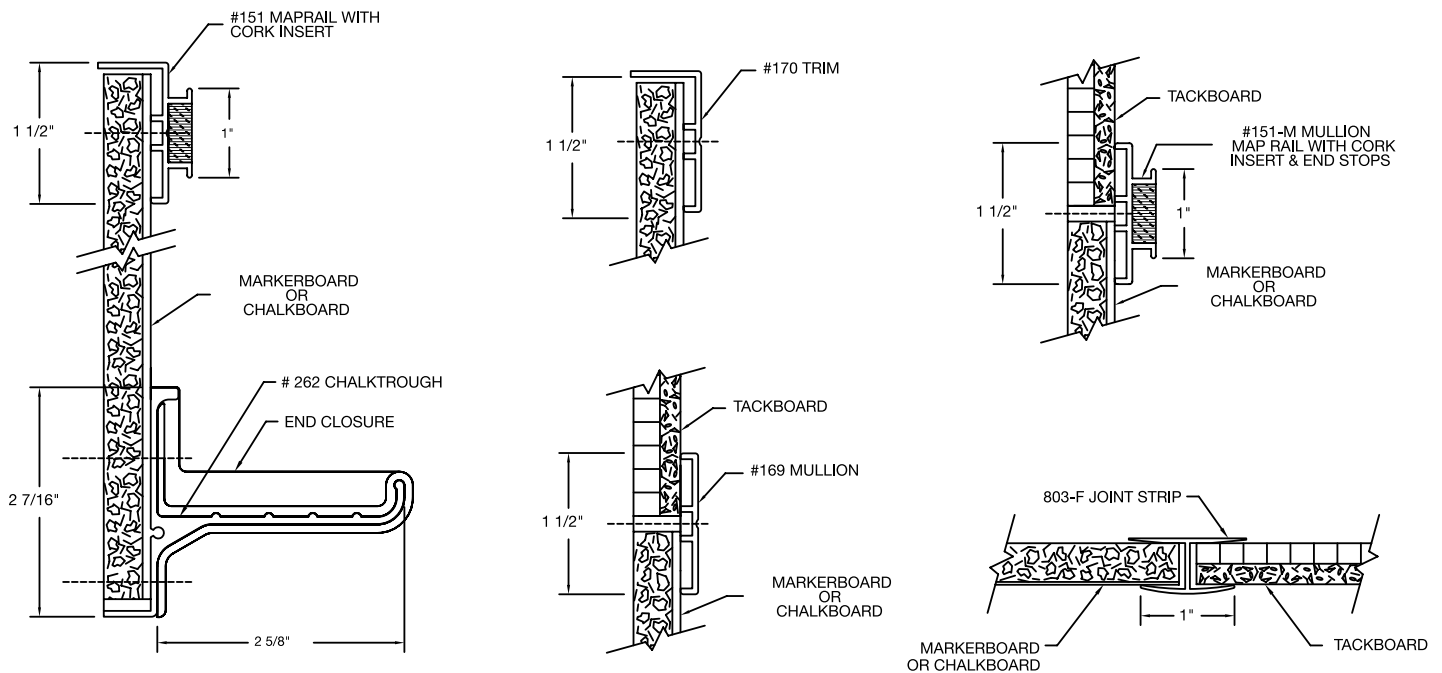
## Snap On Trim - Continuous Grounds With Clips





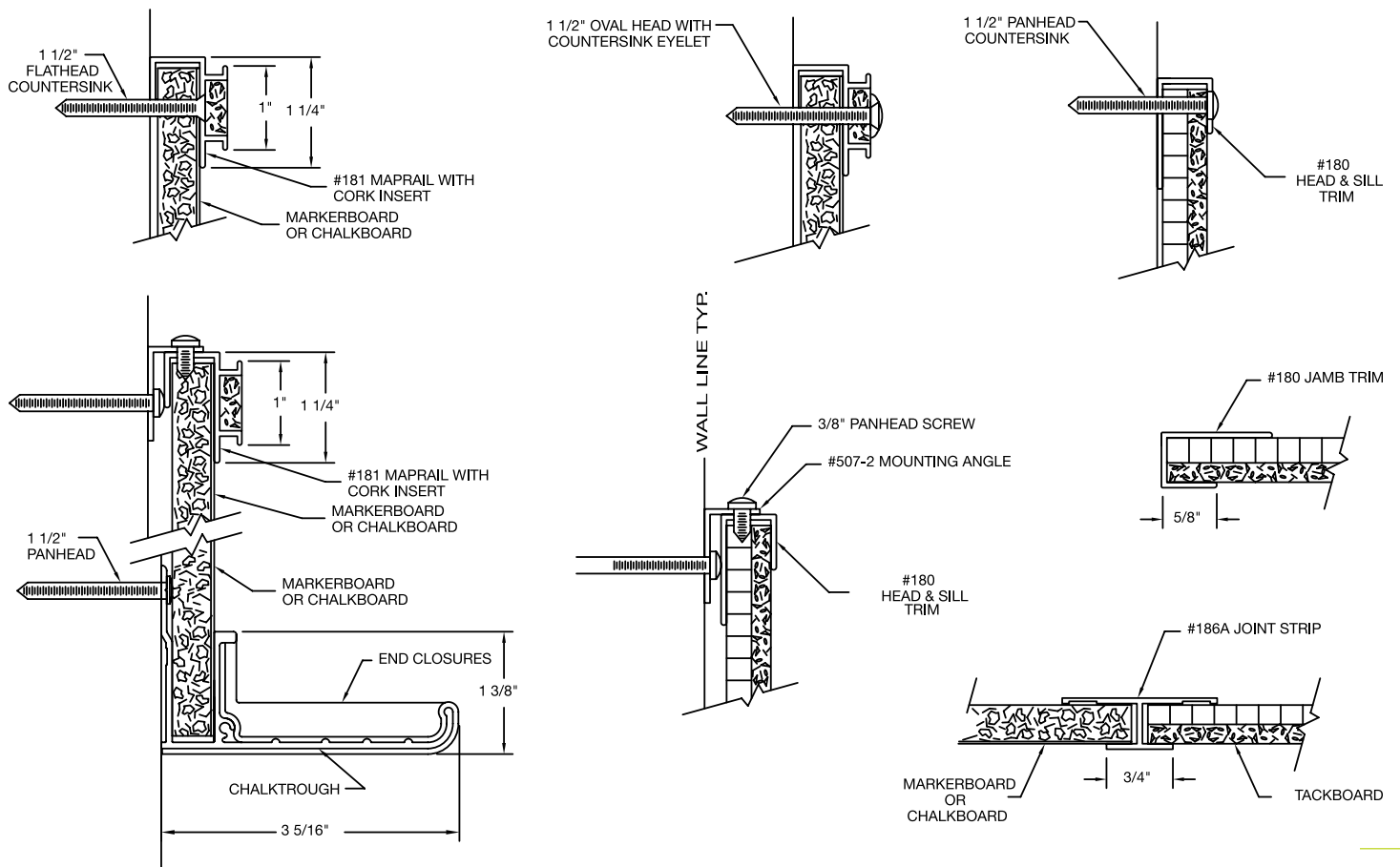
## Screw On Application

Screw-on aluminum trim, with exposed fasteners, is noted for ease of installation.

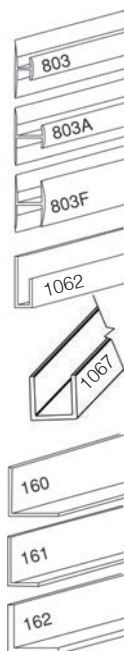
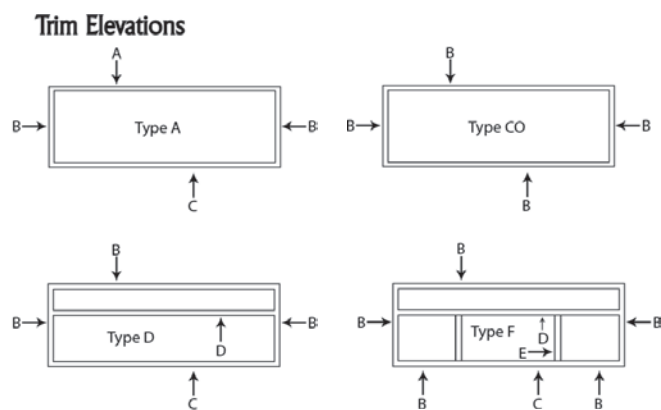


## Slip On Application

The narrow face of slip-on trim gives it a clean, low-profile appearance.



## Divider Bars, Channel Trim & Angle Trim



### DIVIDER BARS

Number	Opening	Face	Stock Lengths
803	1/4"	1/2"	12'6"
803A	1/2"	1/2"	12'6"
803F	1/2"	1"	12'6"

Divider bars weigh approximately 1/4 lb. per lin. ft. Shipped by motor freight. Use freight class 85.

### CHANNEL TRIM

Number	Opening	Face	Stock Lengths
1062	1/4"	5/8"	21'
1067	1/2"	5/8"	12'6" and 17'

Channel trim weighs approximately 1/4 lb. per lin. ft. 8' and 8'6" lengths can ship UPS or Fed Ex Ground. Balance of lengths will be shipped motor freight. Use freight class 85.

### ANGLE TRIM

Number	Description	Stock Lengths
160	1" x 1" x 1/16" angle trim	12'6"
161	1" x 1/2" x 1/6" angle trim	12'6"
162	1" x 1" x 1/8" angel trim	12'6"

No. 160 and No. 161 angle trim weights approx. 1/4 lb. per lin. ft. No 162 weighs 1/3 lb.

Angle trim is shipped by motor freight. Use freight class 85.

## LCS Skins with Double-Sided Tape



### Features:

- LCS porcelain enamel steel skins backed with double-sided tape make resurfacing existing boards a breeze
- Measure to verify fit, clean old board surface, position new skin, peel, and stick – it's that easy
- EZ Stick Skins installations use no solvents, eliminate drying time, and are always a consistent thickness
- Face sheets are shipped precut to customer's specifications

Number	Std. Height	Std. Length
EZ Stick Skins	4'0"	4', 6', 8', 10', 12'

## LCS EZ Fit Panels: 1/2" Face Trim



### Features:

- EZ Fit panels are designed to fit over existing boards
- Panels are White LCS porcelain enamel steel on Medium Density Fiberboard (MDF) core with a moisture barrier back
- Holes are pre-drilled 2" on center; 1" self-tapping screws included
- Satin anodize aluminum trim

Number	Size (HxW)	Weight
EZL244	4' x 4'	44 lbs.
EZL246	4' x 6'	66 lbs.
EZL248	4' x 8'	88 lbs.
EZL2410	4' x 10'	110 lbs.
EZL2412	4' x 12'	132 lbs.
EZL2416	4' x 16'	176 lbs.

## LCS Markerboard Panel



LCS is available in 5'0" heights. Call for pricing and availability.

### Features:

- LCS porcelain enamel steel surface mounted on either 7/16" or 1/4" MDF core with a moisture barrier back. Standard height is 4'0"; standard lengths are 4', 6', 8', 10', 12', and 16'
- Made from enameling grade steel during a 3-coat process, the LCS markerboard surface writes smoothly and erases cleanly
- Use with screw-on trim shown on page 17, for custom framing or for OEM applications

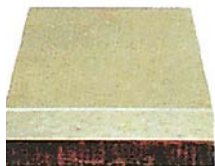
Number	Core
LCS-315-M	1/4" MDF core
LCS-217-M	7/16" MDF core

The Writing Surface Experts®

## Claridge Cork



1/4" Unmounted Cork



1/4" Mounted Cork

Number	Description	Cork Thickness	Backing	Weight
1199	Unmounted Cork 4' roll	1/4"	Heavy Burlap	1lb.
1199A	Under 200 sq. ft.	1/4"	Heavy Burlap	1lb.
1199B	Over 200 sq. ft.	1/4"	Heavy Burlap	1lb.
1190	Mounted Corkboard	1/4"	Burlap on Hardboard	2lbs.

### Features:

- Claridge Cork is made from pure natural ingredients
- The color-impregnated surface is durable, soil resistant, and washable
- Burlap backed, Claridge Cork is dimensionally stable and will not warp or crumble
- Meets ASTM E-84 and meets or exceeds MIL-C-15116-C, Type 1
- No toxins or harmful emissions

### Standard Sizes:

- Claridge cork is priced on the basis of 4' height and 1' increments in length
- All unmounted cork is shipped oversize for cutting to exact size on the job
- Mounted cork available in lengths up to 16'
- Full rolls of Claridge Cork average 95' in length. Invoicing is based on actual square footage shipped

### CLARIDGE CORK: COLOR OPTIONS



1108 Mushroom



1109 Buff



1110 Fawn



1100 Tan



1104 Cinnamon



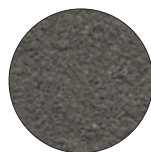
1103 Oyster



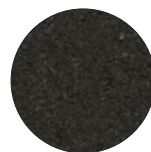
1111 Smoke



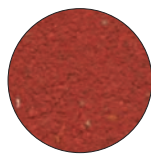
1113 Steel Gray



1136 Graphite



1132 Black



1117 Salsa



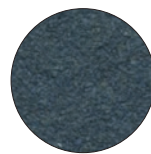
1118 Tangerine



1119 Pineapple



1120 Lettuce



1129 Blueberry

## Tan Nucork

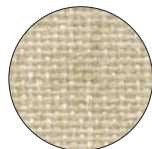
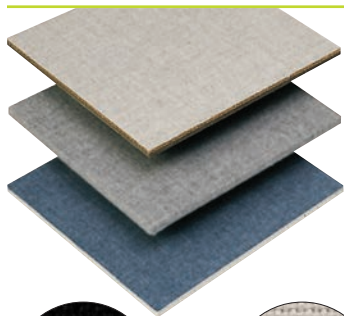


Number	Description	Thickness	Backing	Weight
150	Full Rolls only	1/4"	None	1/4 lb.
150A	Under 200 sq. ft.	1/4"	None	1/4 lb.
150B	Over 200 sq. ft.	1/4"	None	1/4 lb.
150FR	Full Rolls only	1/4"	None	1/4 lb.
150FRA	Under 200 sq. ft.	1/4"	None	1/4 lb.
150FRB	Over 200 sq. ft.	1/4"	None	1/4 lb.
380A		1/16"	Duracore	3/4 lb.
550		1/4"	Hardboard	1/2 lb.

### Features:

- An economical tackboard surface, Tan Nucork is pure grain natural cork without burlap backing
- Nucork has a smooth, resilient surface ideal for use with pins or thumbtacks
- 150 FR Nucork has a Class B fire rating based on ASTM E84 tunnel test as follows: flame spread – 65; smoke developed – 70. Meets military specification MIL-C-15116, Type II
- Available unmounted - by the piece or in full rolls, and mounted on either duracore or hardboard
- Standard height is 4'; mounted nucork available in lengths up to 16', except 380A which is 12' maximum
- Full rolls are approximately 90' long. (Lengths of rolls vary. Billing based on actual square footage shipped.)

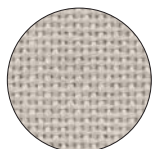
## Guilford of Maine FR701 Fabric Series Bulletin Board



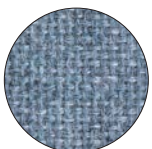
1692 Wheat



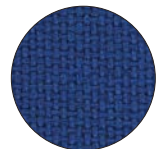
1684 Black



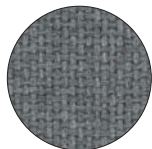
1686 Dark Pearl



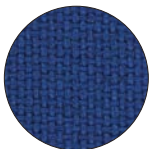
1689 Wedgewood



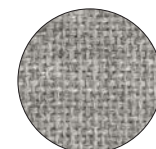
1681 Cement Mix



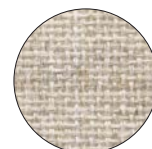
1685 Flannel



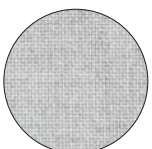
1688 Cobalt



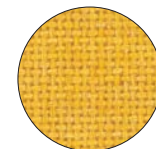
1690 Grey Mix



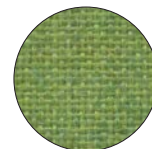
1691 Quartz



1683 Silver



1693 Sunshine



1680 Lime



1679 Cardinal

### Features:

- Fabric Series fabrics are offered in laminated panel form, fabric with cork underlay, or as fabric only
- Colorfast, soil and stain resistant
- Fabric meets ASTM-E 84 Flame Tunnel Test Class "A" Rating
- Standard Sizes: All mounted Guilford of Maine FR701 Fabric Series panels (except 3106) will be priced on the basis of 4' heights and 1' increments in length. 3106 is 66" wide; cut to size pieces will be billed on the basis of 5' heights and 1' increments in length. Full rolls vary in length from 165' to 180'. Billing is based on actual square footage shipped.

*Note: 3100 may be shipped oversize for cutting to exact size on job.*

### Options:

- C.O.M. fabrics approved for vertical surfaces in lieu of Guilford of Maine FR701 Fabric – call for pricing

Number	Description	Max Length	Weight/sq. ft.
3100	Fabric on cork underlay		
3100A	Cut to Size – Less than 200 sq. ft.	16'	1/2 lb.
3100B	Cut to Size – 200 sq. ft. or more	16'	1/2 lb.
3101	Fabric on underlay on Duracore-1/2" overall	12'	1-1/8 lbs.
3101EW	Fabric on underlay on Duracore w/edges wrapped	12'	1-1/8 lbs.
3102	Fabric on cork underlay on 1/4" hardboard – 1/2" overall	16'	1-1/2 lbs.
3102EW	Fabric on cork underlay on 1/4" hardboard with edges wrapped – 1/2" overall	16'	1-1/2 lbs.
3103	Fabric on duracore (not fire retardant)	12'	1 lb.
3103EW	Fabric on duracore (not fire retardant) with edges wrapped	12'	1 lb.
3104	Fabric on 7/16" fire retardant Duracore	12'	1 lb.
3104EW	Fabric on 7/16" fire retardant Duracore with edges wrapped	12'	1 lb.
3106	Full Rolls – Guilford of Maine FR701 Fabric only	Approximately 165'	1/8 lb.
3106A	Cut to Size – Guilford of Maine FR701 Fabric only	165'	1/8 lb.

## Hook-Fab

Hook-Fab is a hook-and-loop compatible non-woven fabric made from 100% nylon with polyester foam core and nylon tricot backing. Easily cut to size, Hook-Fab can be used with hook-and-loop fasteners, tacks or push pins. The low maintenance, stain resistant surface makes Hook-Fab ideal for any environment.



No. 930 Hook-Fab on cork underlay

No. 934 Hook-Fab on cork underlay on 1/4" hardboard



976 Black

### Features:

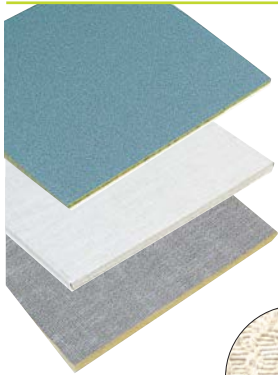
- Hook-Fab can be used with hooktape as well as thumbtacks and pushpins.
- Offered in laminated panel form, fabric with cork underlay, or as fabric only
- Hook-Fab is renowned for its resistance to soil and staining and will not fade
- Lightweight and pliable, yet durable enough to stand up to heavy use, Hook-Fab combines good looks with superior performance

Number	Description	Max Length	Weight/sq. ft.
930	Fabric on cork underlay		
930A	Cut to Size – Less than 200 sq. ft.	16'	1/2 lb.
930B	Cut to Size – 200 sq. ft. or more	16'	1/2 lb.
934	Fabric on cork underlay on hardboard	16'	1-1/2 lbs.
934EW	934 with edges wrapped	16'	1-1/2 lbs.
935	Fabric on fire retardant Duracore	12'	1 lb.
935EW	935 with edges wrapped	12'	1 lb.
936	Hook-Fab fabric only – 55" wide	120'	1/16 lb.
937	Fabric on Duracore	12'	1 lb.
937EW	Fabric on Duracore with Edges Wrapped	12'	1 lb.
923	Self gripping Hooktape, pre-glued, pressure-sensitive back, available in 1" x 7" long rolls		

Hooktape



## Fabriccork



### Features:

- Fabriccork has a washable, stain resistant surface
- Vinyl coated fabric retains new appearance – wears indefinitely
- Vinyl fabric meets or exceeds Federal Specifications CCC-W-408A
- Available as fabric only, fabric mounted on cork underlay, and as mounted Fabriccork tackboard panels

### Standard Sizes:

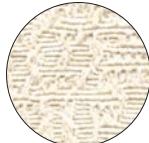
- Fabriccork panels are priced on the basis of 4' height and 1' increments in length

### Options:

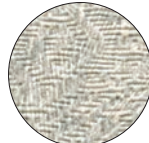
- Fabric covered H-Bar joints for joining 2 unframed panels
- C.O.M. vinyls approved for vertical surfaces can be used

Number	Description	Thickness	Max Length	Weight/sq. ft.
1380	Fabric on cork underlay on Duracore	1/2"	12'	1lb.
1380EW	1380 with edges wrapped	1/2"	12'	1lb.
1381FR	Fabric on flame retardant Duracore*	1/2"	12'	1lb.
1381FREW	1381 with edges wrapped	1/2"	12'	1lb.
1500 (Full Rolls)	Fabric on cork underlay	1/4"	80'	1/2 lb.
1500A	Fabric on cork underlay. Under 200 sq.ft.	1/4"	80'	1/2 lb.
1500B	Fabric on cork underlay. Over 200 sq.ft.	1/4"	80'	1/2 lb.
1499	Fabric only, no underlay		90'	1/8 lb.
1550	Fabric on cork underlay on Hardboard	1/2"	16'	1-1/2 lbs.
1550EW	1550 with edges wrapped	1/2"	16'	1-1/2 lbs.

\* Fire retardant Duracore backer board has a Class A Fire Rating per ASTM E84 as follows – Flame Spread 25, Smoke Developed 20



KV216 Ecrú



KV230 Oyster



KB290 Sterling



KL404 Dorset



KL412 Ancestral



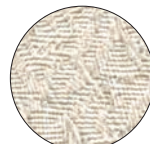
KB664 Antique



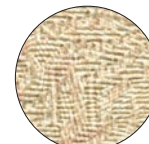
KE510 Runway



KE522 Innocent



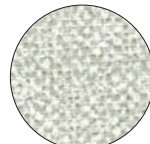
KV233 Driftwood



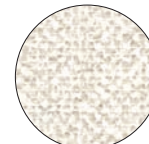
KV237 Curry



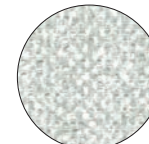
KV241 Wheat Straw



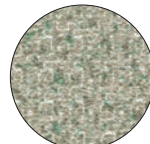
KL483 Downing Stone



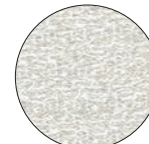
KL490 Rectory



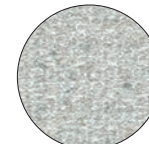
KL498 Winthrop



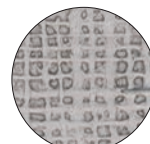
KE584 Power



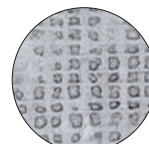
KE591 Counselor



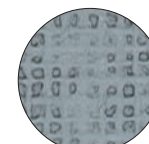
KE592 Gentleman Gray



KB662 Gray

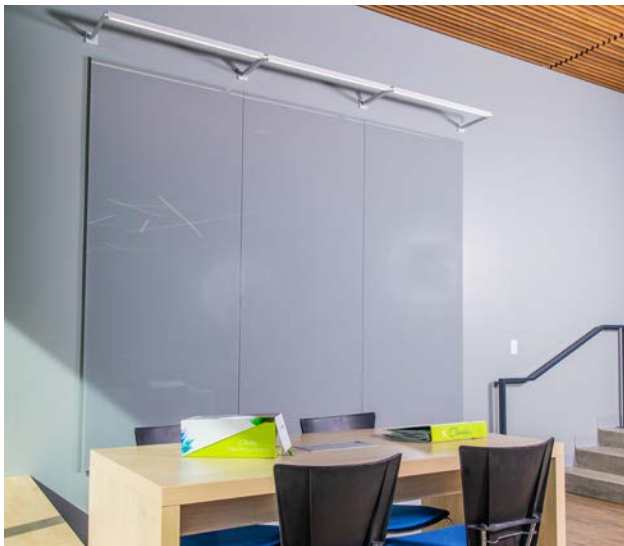


KB661 Dawn



KB278 Pacific

## Magnetic Glass Markerboards



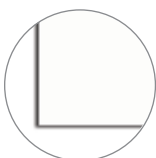
### Features:

- 1/4" tempered low-iron glass dry-erase writing surface with steel back
- Eased corners and polished edges
- Furnished with 4 rare earth magnets
- Choose brushed stainless edge grips for easy and attractive stand-off mounting (4 per board on sizes through 4' x 4'; 4' x 6' & 4' x 8' have 6) or invis-mount – no visible hardware
- Furnished in brilliant white if no color specified. 10 standard colors, 180 optional colors. See color options on page 3.

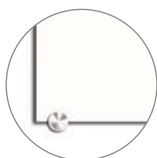
### Mounting Options:

- MGMI glass markerboards have invis-mount with no visible hardware for a "floating" appearance
- MGM glass markerboards include brushed stainless edge grips for stand-off mount
- MGM-TG glass markerboards include brushed stainless edge grips for stand-off through glass mount

*Accessory tray, markers and microfiber cloth are optional*



Invisi-mount



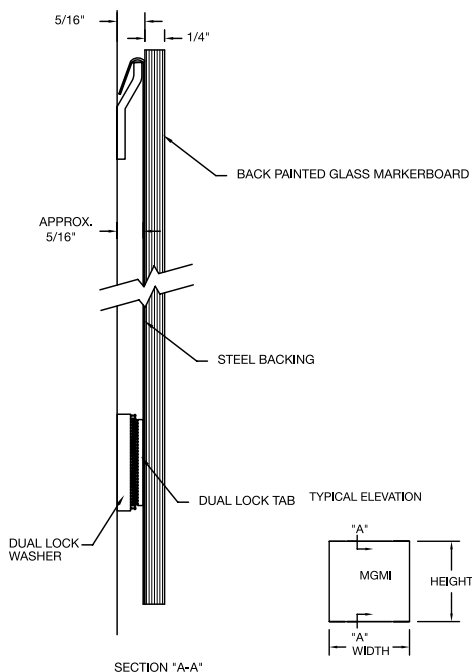
Standoff Edge Mount



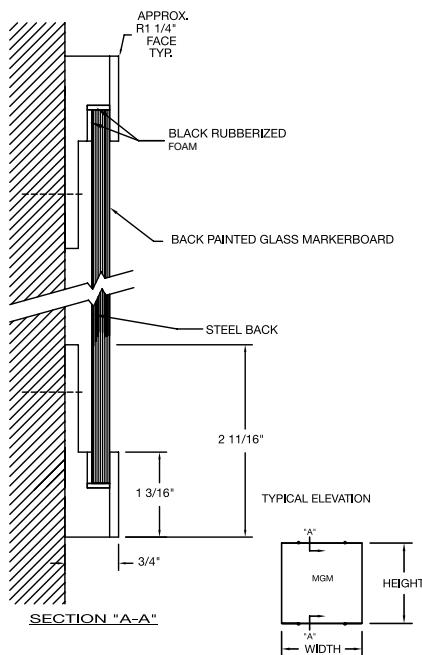
Standoff Through Mount

Invisi-Mount	Edge Mount	Through Mount	Size (HxW)	Weight
GB-MGMI23	GB-MGM23	GB-MGM-23-TG	2' x 3'	42 lbs.
GB-MGMI34	GB-MGM34	GB-MGM-34-TG	3' x 4'	84 lbs.
GB-MGMI44	GB-MGM44	GB-MGM-44-TG	4' x 4'	112 lbs.
GB-MGMI46	GB-MGM46	GB-MGM-46-TG	4' x 6'	168 lbs.
GB-MGMI48	GB-MGM48	GB-MGM-48-TG	4' x 8'	224 lbs.

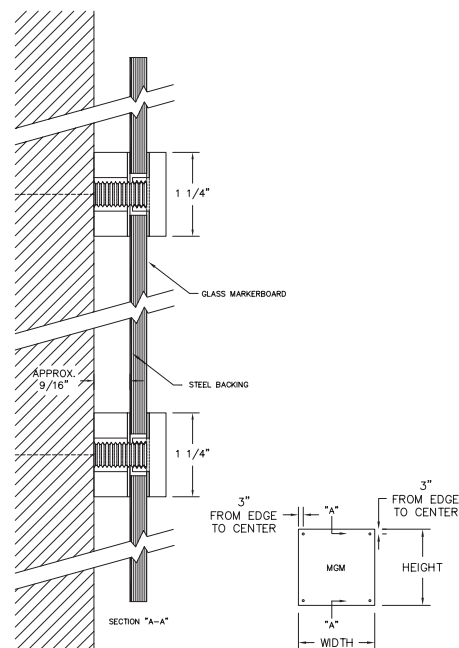
### Invisi-Mount



### Edge Mount



### Through Glass Mount





## Non-Magnetic Glass Markerboard

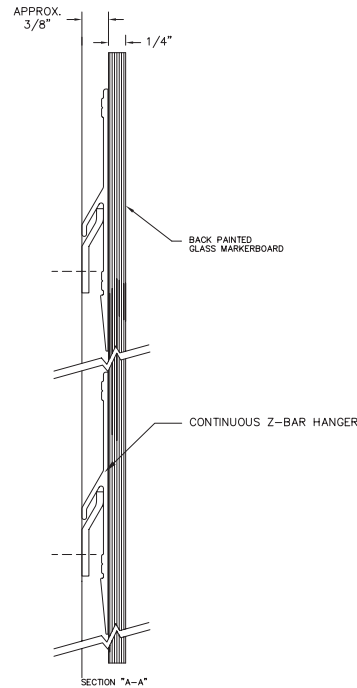


Invisi-Mount	Edge Mount	Size (HxW)	Weight
GB-PGBI23	GB-GM23	2' x 3'	39 lbs.
GB-PGBI34	GB-GM34	3' x 4'	78 lbs.
GB-PGBI44	GB-GM44	4' x 4'	104 lbs.
GB-PGBI46	GB-GM46	4' x 6'	156 lbs.
GB-PGBI48	GB-GM48	4' x 8'	208 lbs.

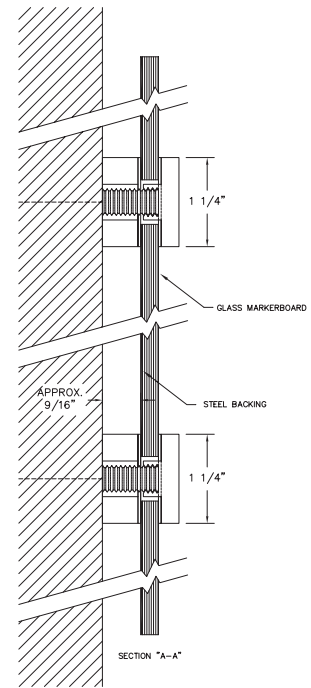
### Features:

- 1/4" tempered glass writing surface with acid etch back
- Polished edges
- Brushed stainless edge grips for stand-off mounting (4 per board on sizes through 4' x 4'; 4' x 6' & 4' x 8' have 6)

### PGBI - Invisi-Mount



### GM - Through Glass Mount



## Magnetic Glass Marker Walls



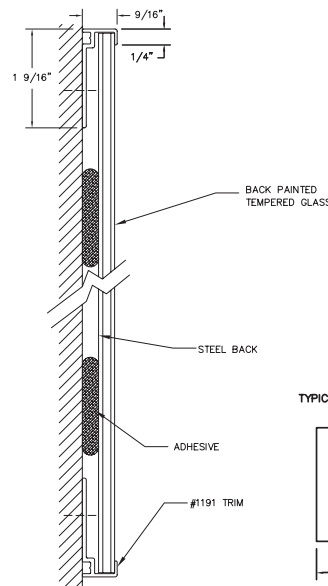
Number	Size (HxW)	Weight
GB-MGMW-64	6' x 4'	192 lbs.
GB-MGMW-84	8' x 4'	256 lbs.



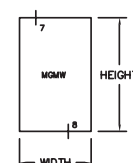
Trim Detail

### Features:

- Exceptionally durable, virtually maintenance free
- Low-iron tempered glass for exceptional clarity
- 10 standard colors; 180 optional colors
- Available in heights up to 10'
- Narrow face aluminum trim at top and bottom



### TYPICAL ELEVATION



# HORIZONTAL SLIDING SYSTEMS - WALL MOUNTED



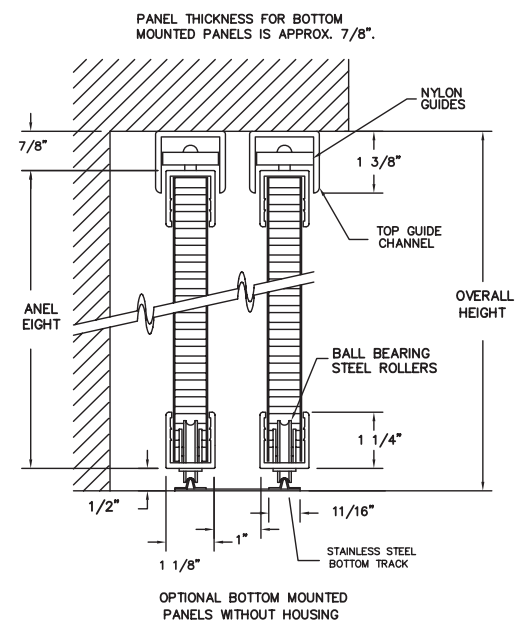
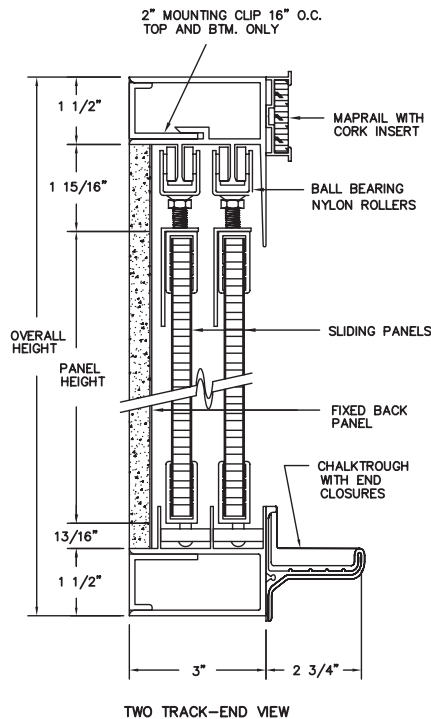
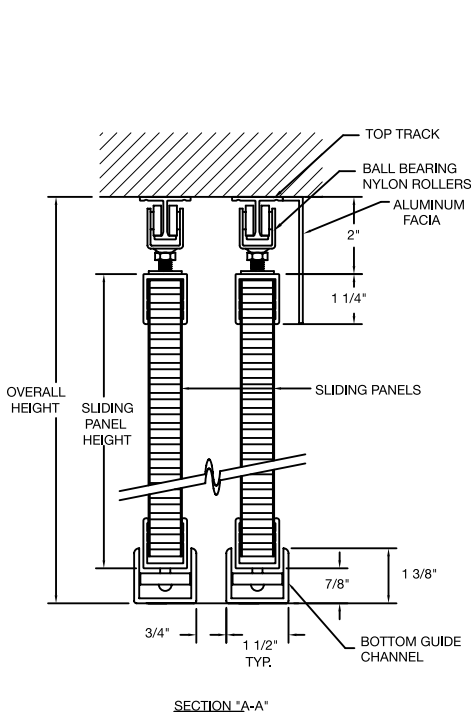
Horizontal Sliding Units are custom-built to meet custom needs, providing optimum display surfaces within easy reach for teaching, conferences and training.

## Features:

- Heavy-duty aluminum housing with satin anodize finish
- Sliding panels are top-suspended and glide easily over aluminum track on molded nylon rollers
- Nylon ball bearing rollers at top of unit and nylon guide rollers at bottom eliminate vibration and provide smooth, quiet operation
- Fixed back panel with 2, 3 or 4 sliding panels on 2, 3, or 4 tracks, offered in sizes up to 4' x 24'
- Sliding panels and back panel can be LCS markerboard or porcelain chalkboard, or Claridge Cork, Fabriccork, Guilford of Maine FR701 Fabric or Tan Nucork tackboard, Projection screen, or COM fabrics
- Component parts (sliding panels with track, guide channel, and hardware, but no housing) available

Number	Size (H x W)
HS46	4' x 6'
HS48	4' x 8'
HS410	4' x 10'
HS412	4' x 12'
HS414	4' x 14'
HS416	4' x 16'
HS420	4' x 20'
HS424	4' x 24'

2-track units weigh approx. 6 1/2 lbs. per sq. ft.  
4-track units weigh 11 1/2 lbs. per sq. ft.



# VERTICAL SLIDING SYSTEMS - WALL MOUNTED

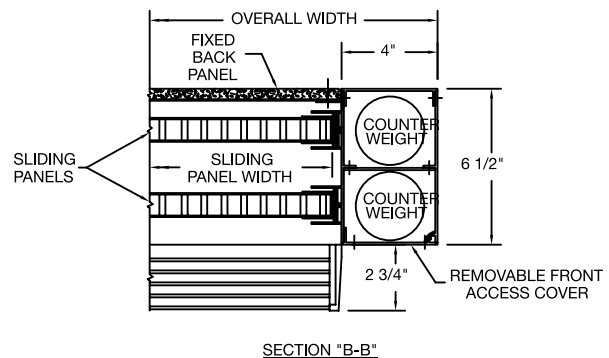
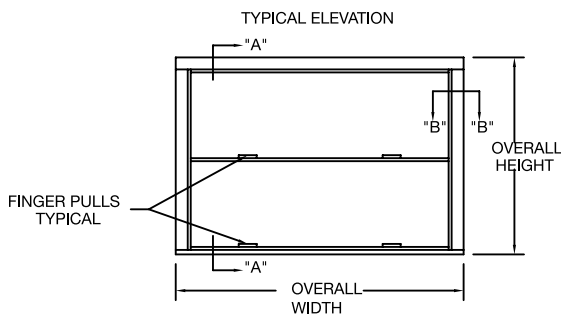
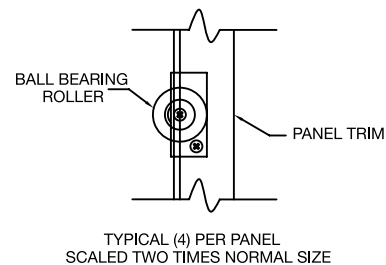
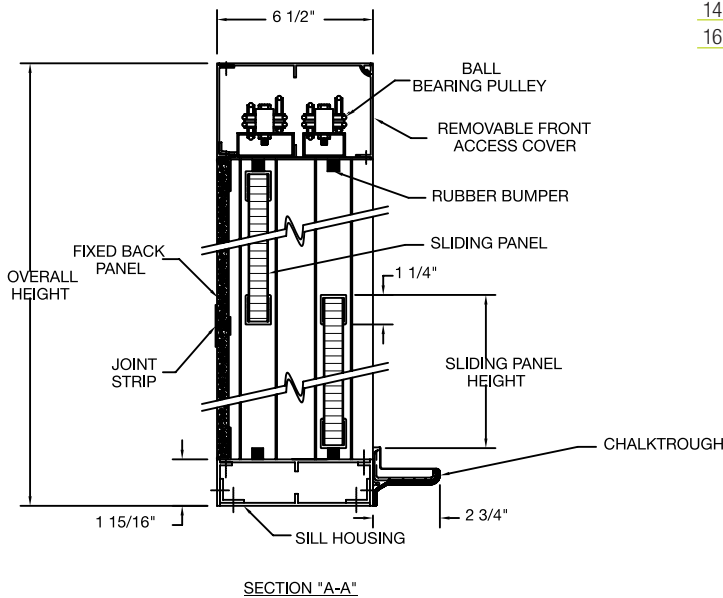


## Features:

- Heavy-duty aluminum housing, trim and panel edging are extruded aluminum with satin anodize finish
- Manually Operated Units
- Wall mounted (panels on wall mounted units slide from sill or tray to top of unit)
- Balanced, lightweight panel construction provides needed rigidity and eliminates to and fro movement when panels are in use
- One, two or three 7/8" thick sliding panels (2-panel housing is 6-1/2" deep; face is 4")
- Back panel and sliding panels can be LCS markerboard or porcelain chalkboard, or Claridge Cork, Fabricork, Guilford of Maine FR701 Fabric or Tan Nucork tackboard, Projection screen, or COM fabrics

## Manually Operated Wall Mounted

Number	Size (HxW)
48CSW	8' x 4'
58CSW	8' x 5'
68CSW	8' x 6'
88CSW	8' x 8'
108CSW	8' x 10'
128CSW	8' x 12'
148CSW	8' x 14'
168CSW	8' x 16'



# VERTICAL SLIDING UNITS - FLOOR MOUNTED



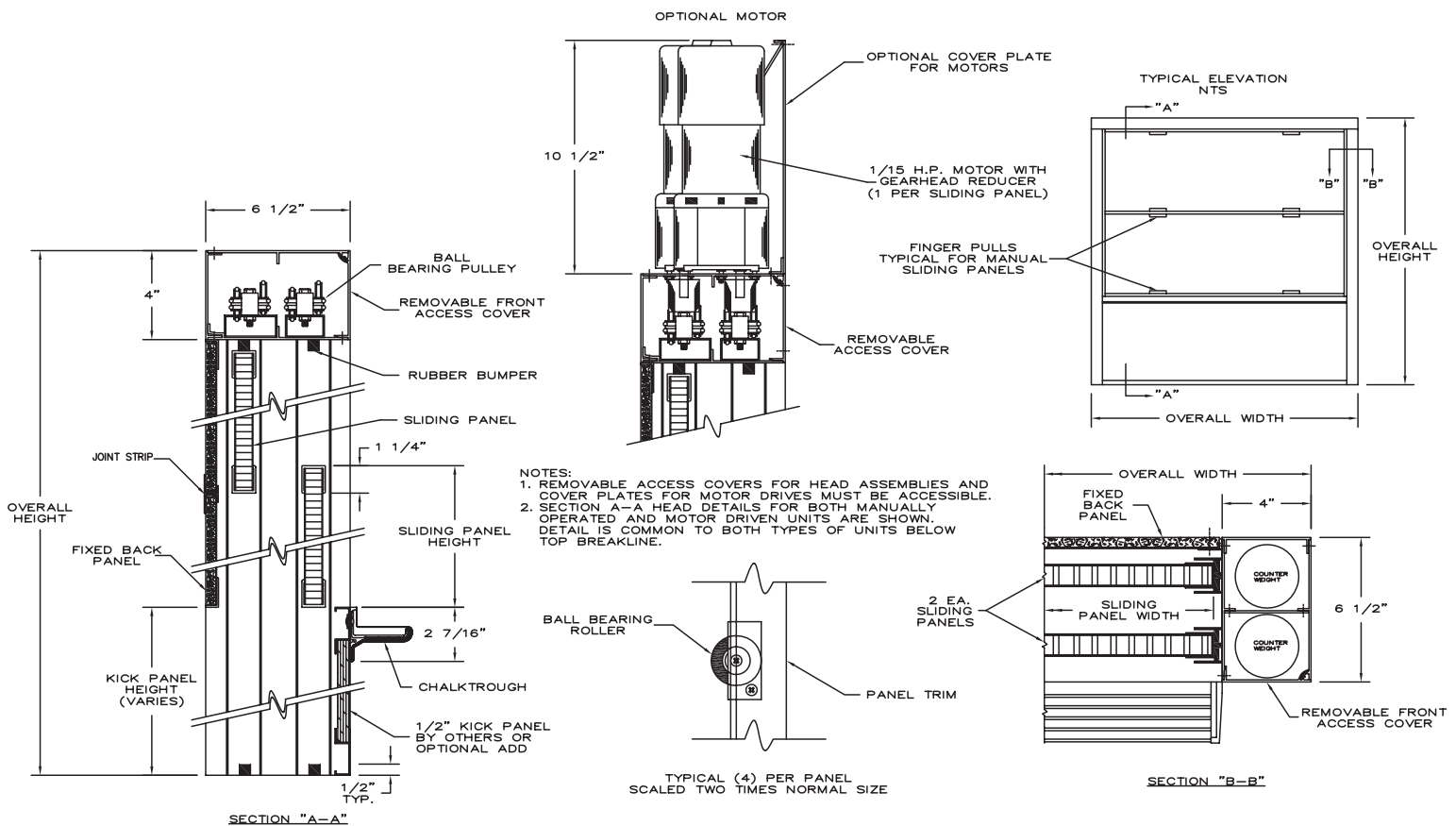
Vertical Sliding Units offer ideal visual communication solutions where large visual display surfaces are required but space is limited.

## Features:

- Heavy-duty aluminum housing, trim and panel edging are extruded aluminum with satin anodize finish
- Manually or Motor Operated Units
- Floor mounted panels slide from floor to top of unit
- Balanced, lightweight panel construction provides needed rigidity and eliminates to and fro movement when panels are in use
- One, two or three 7/8" thick sliding panels (2-panel housing is 6-1/2" deep; face is 4")
- Back panel and sliding panels can be LCS markerboard or porcelain chalkboard, or Claridge Cork, Fabricork, Guilford of Maine FR701 Fabric or Tan Nucork tackboard, Projection screen, or COM fabrics

Manually Operated Floor Mounted		Motor Operated Floor Mounted	
Number	Size (HxW)	Number	Size (HxW)
410CS	10' x 4'	410MO	10' x 4'
510CS	10' x 5'	510MO	10' x 5'
610CS	10' x 6'	610MO	10' x 6'
810CS	10' x 8'	810MO	10' x 8'
1010CS	10' x 10'	1010MO	10' x 10'
1210CS	10' x 12'	1210MO	10' x 12'
1410CS	10' x 14'	1410MO	10' x 14'
1610CS	10' x 16'	1610MO	10' x 16'

Optional Kick Panel and optional Wireless remote control.  
Approved shop drawings required.



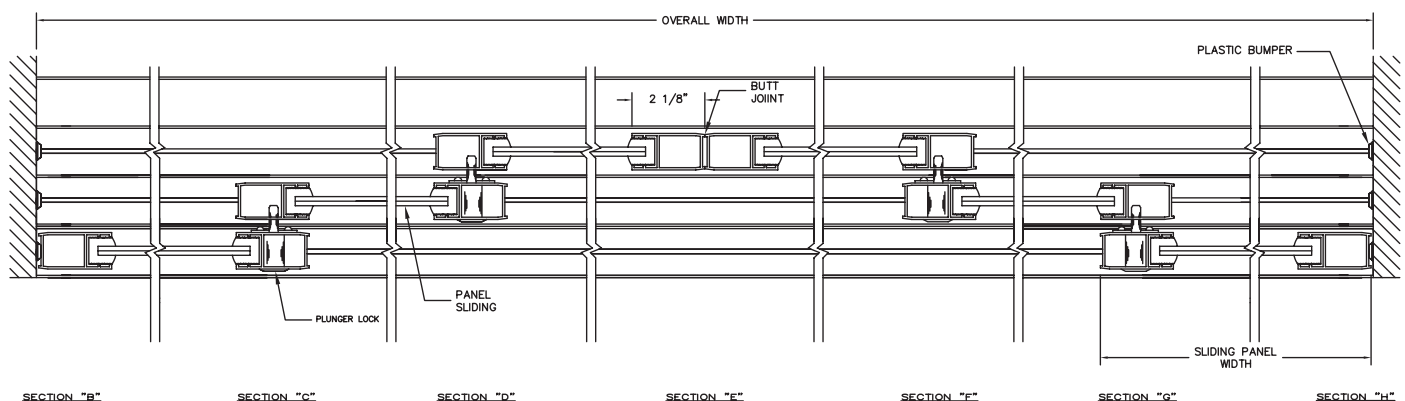
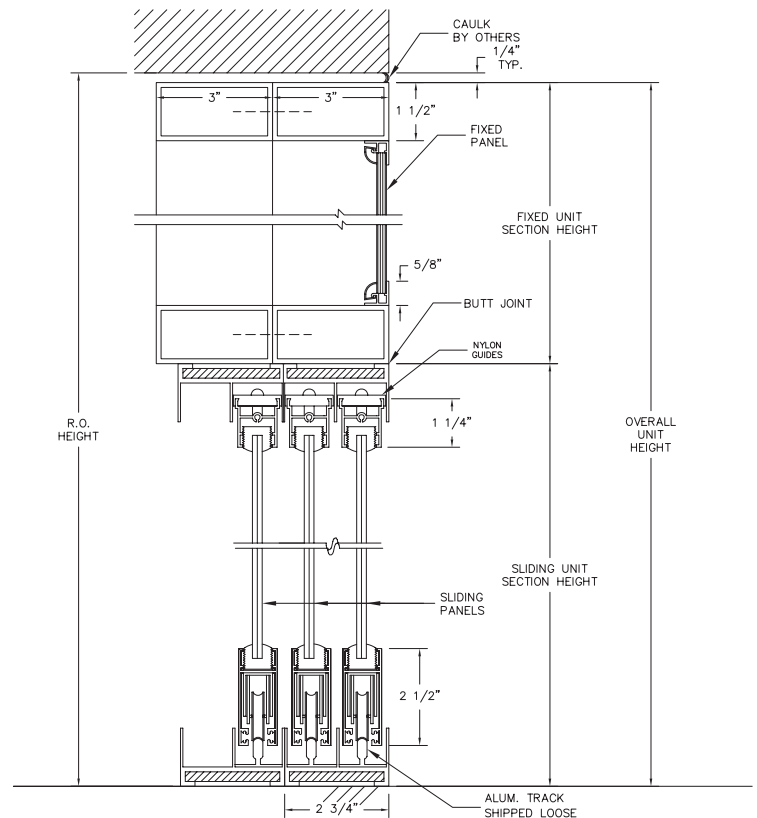
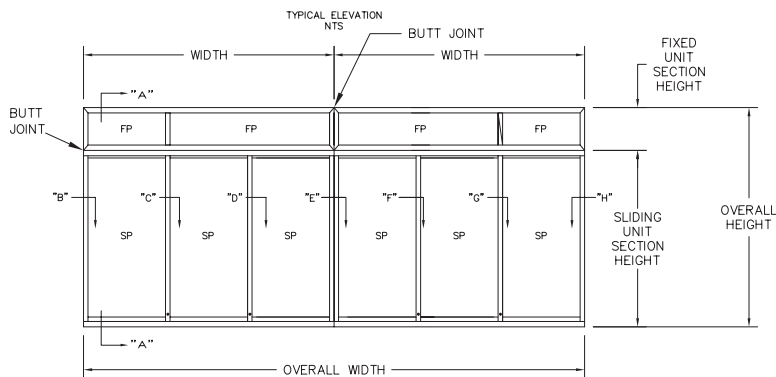
# CONCEALMENT SLIDING MARKER WALLS



Horizontal Concealment Sliding Units offer a dual purpose as a large visual display surfaces and as a sliding concealment wall for storage.

## Features:

- Featuring our best in class writing surface, LCS<sup>3</sup> Porcelain and Claridge Glass, won't ghost or stain
- Magnetic surface which is also bacteria-resistant
- LCS<sup>3</sup> Porcelain is projection friendly
- Claridge Porcelain and Claridge Glass surfaces are GREENGUARD certified



PLAN VIEW  
N.E.

## A modern lounge area featuring two patterned armchairs and a round coffee table. The background consists of a large white wall and dark wood paneling. Sunlight streams in from the right, creating a bright diagonal band across the wall and floor.

The Writing Surface Experts®



# TACK WALLS



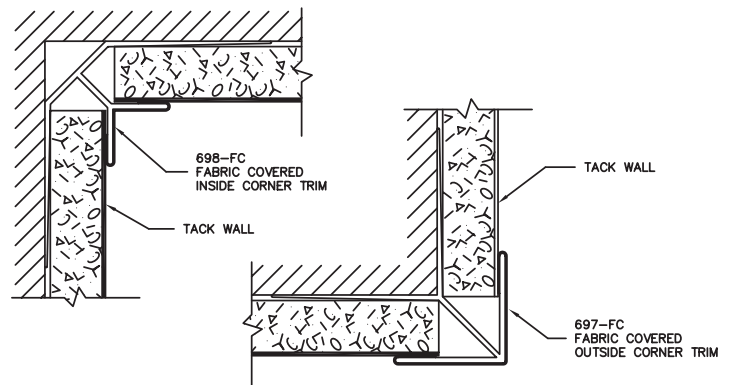
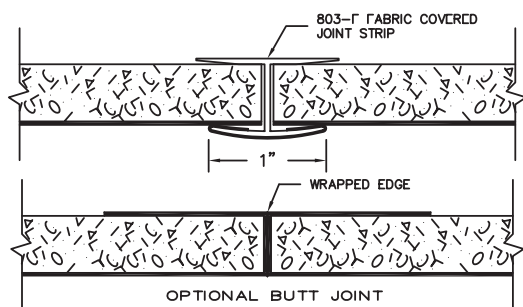
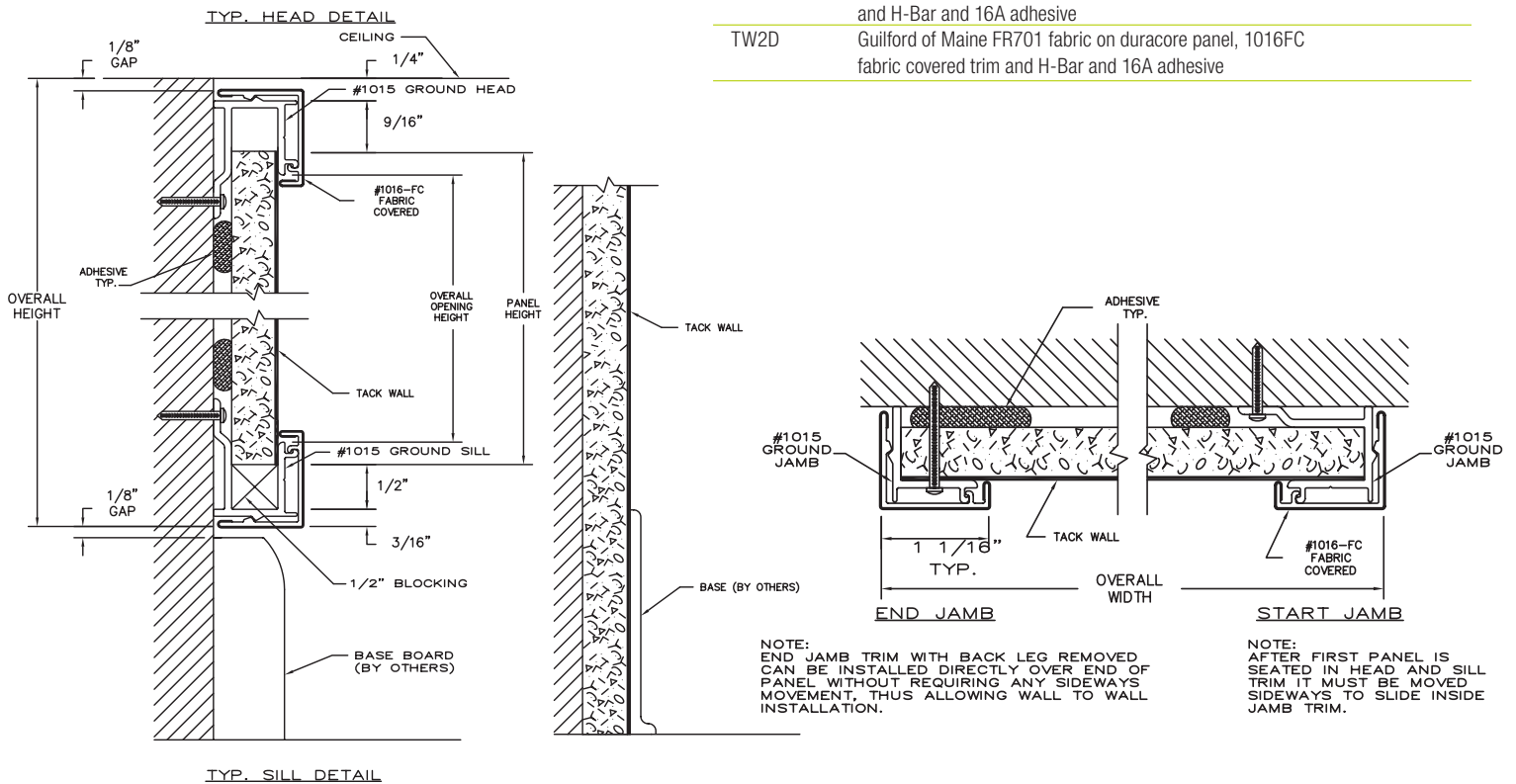
Edge-wrapped panels of either Fabriccork or Guilford of Maine FR701 Fabric butt together to cover an entire wall or work space, floor-to-ceiling.

## Features:

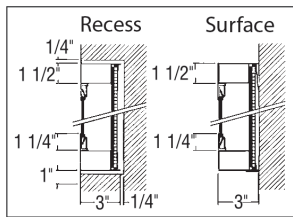
- Choose from Fabriccork and Guilford of Maine FR701 Fabric colors
- Ideal for offices, board rooms, conference rooms, etc.
- Edge-wrapped panels can be custommade to fit existing walls

Where trim is required, fabric covered H-bars, fabric covered trim and fabric covered inside and outside corners are also available.

See pages 17-19 for tack surface options.



## Contemporary Series Bulletin Board Cabinet



### Features:

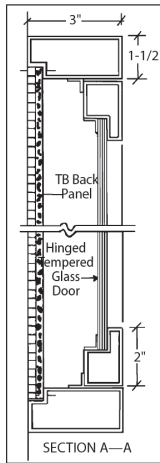
- 1-1/2" x 3" rectangular aluminum perimeter trim, satin anodize finish; inside depth 1-3/4"
- Tackable back panels can be Claridge cork, Fabricork, Guilford of Maine FR701 Fabric, Hook-Fab or Tan Nucork (grooved directory back panels optional). See pages 17-19 for color selections.
- 3/16" tempered glass doors with flat key tumbler locks
- Hinged door cabinets have continuous piano hinges; sliding door units, ground-in finger pulls
- Surface mounted units equipped with Z-bar hangers
- Available with header panel

### Options:

- LED Lighting
- Outdoor weatherproofing (hinged door only)
- Recessed installation
- Medium or dark bronze anodize or powder coat finish

Number	Size (H x W)	Weight lbs.
2035	3' x 2'	42
2041	3' x 4'	72
2040	4' x 4'	96
2044	4' x 6'	144
2046	4' x 8'	256
2048	4' x 10'	320
2050	4' x 12'	384

## Large Contemporary Series Bulletin Board Cabinet



### Features:

- Heavy-gauge rectangular aluminum, satin anodize finish
- Tempered glass doors hung on piano hinges, flat key tumbler locks
- Mitered corners reinforced for rigidity
- Tackable back panels in Claridge Cork, Fabricork, Hook-Fab, Guilford of Maine FR701 Fabric or Tan Nucork. See pages 17-19 for color selections.
- Angle hangers furnished - top and bottom
- 3" housing - 1-3/4" I.D.; 4" - 2-3/4" I.D.

### Options:

- 1-1/2" x 3" or 1-3/4" x 4" housing
- Surface or Recess installation
- LED Lighting (4" cabinets only)
- Med. or Dk. Bronze Anodize; Powder Coat Finish

Number	Size (H x W)	Weight lbs.
2153	5' x 3'	180
2156	5' x 6'	300
2164	6' x 4'	250
2168	6' x 8'	500

*Note: Note: 3' and 4' widths have one door; 6' and 8' cabinets have 2 pair of doors. Specify depth - 3" or 4", recess or surface installation (if recess installation, provide finished opening measurements), and type and color for back panel.*

## Imperial Series Bulletin & Directory Board Cabinet



### Features:

- 3/16" tempered sliding glass doors; tumbler lock
- 3 1/4" O.A.; inside depth 1 1/2"
- 6" translucent plexiglass header panel

Header	No Header	Size (H x W)	Weight lbs.
300	294	36" x 48"	80
302	296	36" x 72"	120
303	297	48" x 60"	135
304	298	48" x 72"	160

## No.310 Bulletin Board Cabinet



### Features:

- 3 1/4" perimeter; inside depth 1 1/4"
- Sliding glass door shoe, channel and track are heavy-gauge extruded aluminum, bronze finish

Number	Size (H x W)	Weight lbs.
310	36" x 48"	78
310A	36" x 60"	98
310B	36" x 72"	118
310C	48" x 60"	130
310D	48" x 72"	156

The Writing Surface Experts®

## 370 Recessed Display Case



Sliding Door	Hinged Door	Pair of Doors	Size (HxW)	Weight lbs.
372	372H	1	4' x 4'	135
373	373H	1	4' x 6'	204
374	374H	2	4' x 8'	272
375	375H	2	4' x 10'	340
376	376H	3	4' x 12'	408
378	378H	3	4' x 16'	544

\*For weight of unit with wood box, add approx. 5 lbs. per sq. ft. for OA case size to weight shown. Freight Class 125.

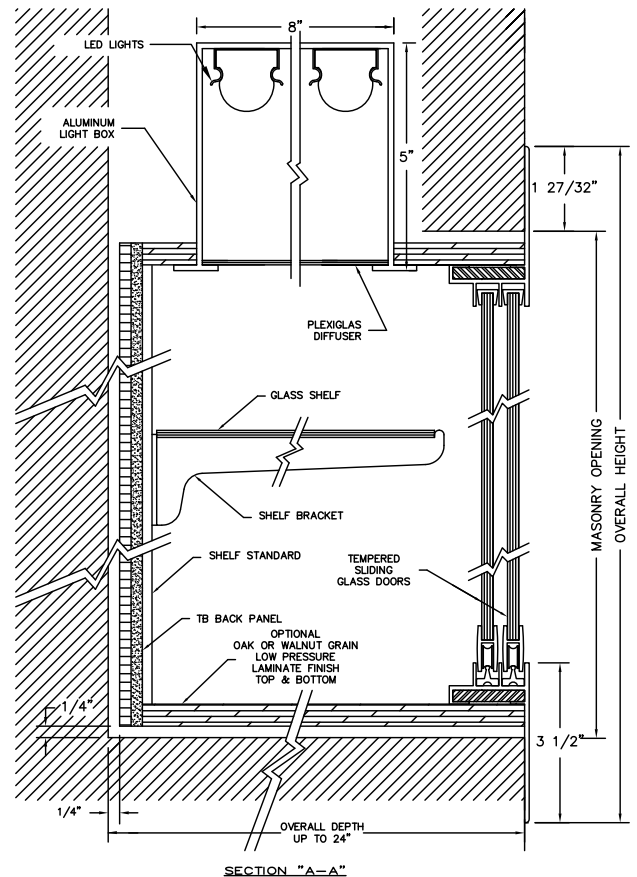
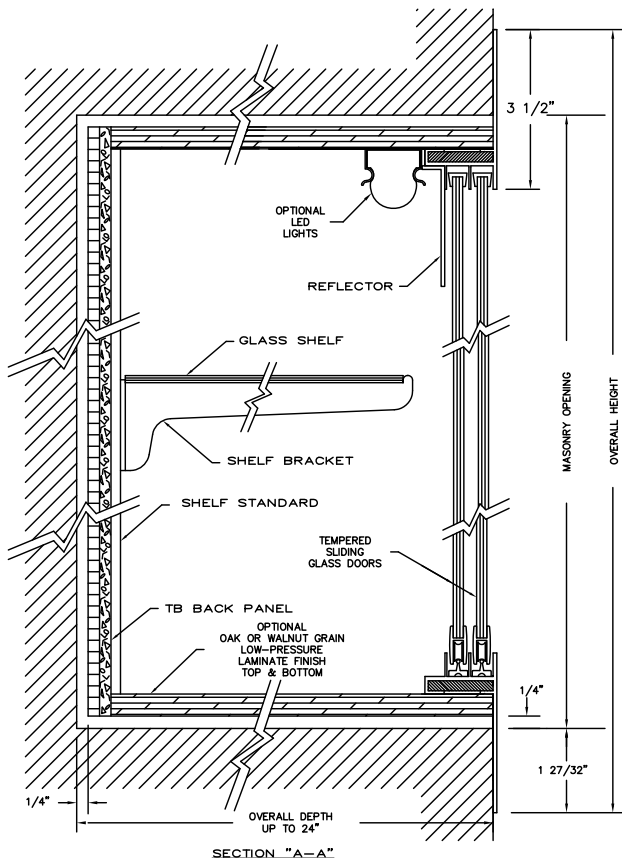
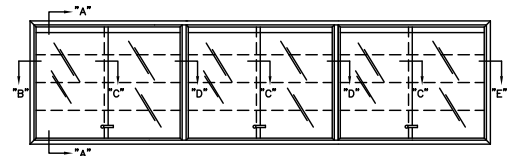
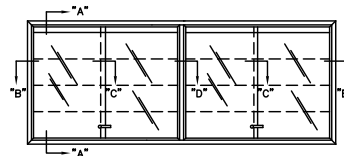
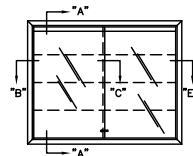
### Features:

- Display case fronts are built using satin anodize aluminum
- Tackable back panels in Claridge Cork, Fabricork, Guilford of Maine FR701 Fabric and Hook-Fab, or oak or walnut grain low pressure laminate
- 3/16" tempered glass sliding doors with lock and key
- Three 6-, 8-, 10-, or 12-inch wide glass shelves with standards and brackets

### Options:

- Wood box – specify depth – up to 24" (16" furnished if depth not specified) and finish – oak or walnut grain low-pressure laminate
- LED Lighting
- Medium or Dark Bronze anodize or Powder Coat finish in lieu of satin anodize
- Hinged doors in lieu of sliding
- Radius front design optional

Masonry opening size for 370 and 390 cases is 3 11/16" smaller in both height and width than O.A. case size.



## 390 Large Door Recessed Display Case



### Features:

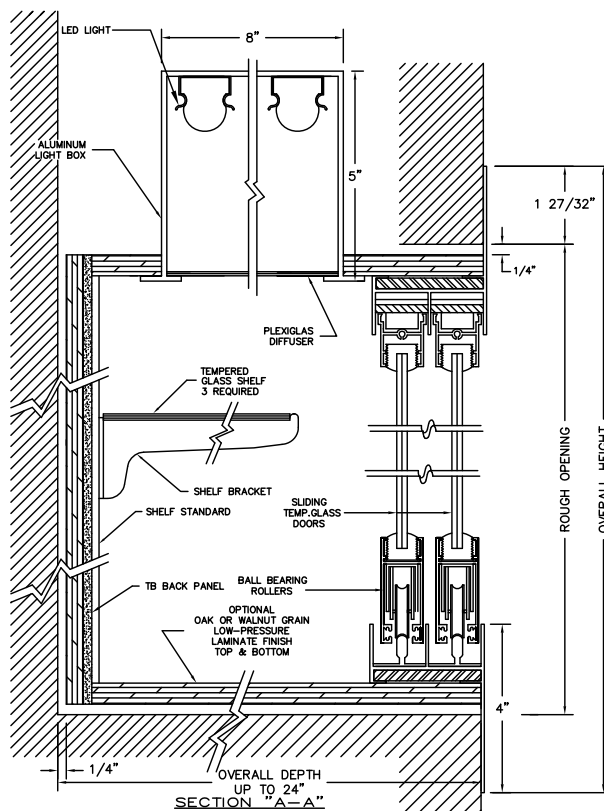
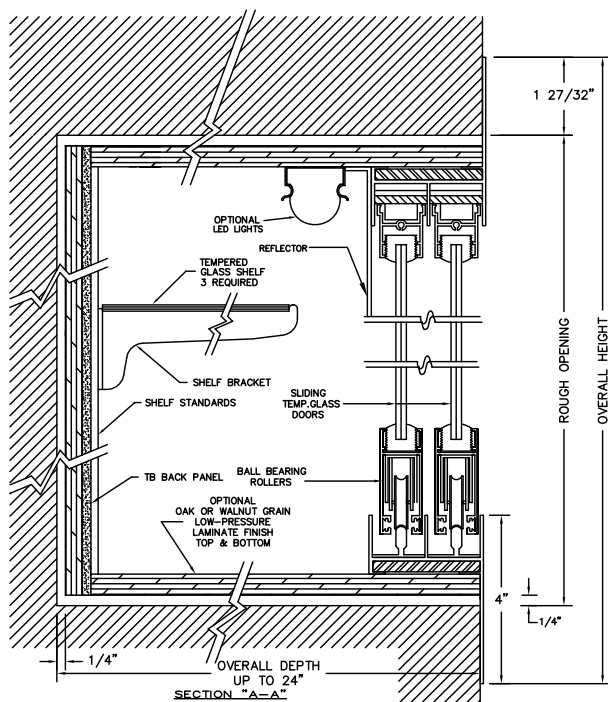
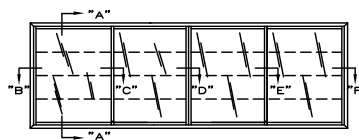
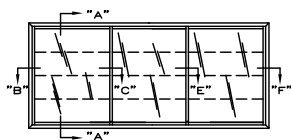
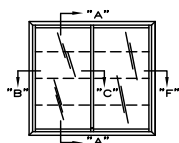
- Super-heavy satin anodized aluminum frame; 4" face; corners mitered for rigidity
- Tackable back panels in Claridge Cork, Fabricork, Guilford of Maine FR701 Fabric and Hook-Fab. See pages 17-19 for color selections.
- ¼" tempered glass sliding doors with lock and key – similar to patio doors
- Three 6-, 8-, 10-, or 12-inch wide glass shelves with standards and brackets

### Options:

- Wood Box – specify depth – up to 24", is ½" thick oak or walnut grain low pressure laminate
- LED Lighting
- Medium or dark bronze anodize or powder coat finish in lieu of satin anodize
- Standard sizes shown; cases can be constructed in virtually any size required

Number	Pair of Doors	Size (HxW)	Shipping Weight lbs.
394	2	6' x 6'	360
395	2	6' x 8'	480
396	3	6' x 10'	600
397	3	6' x 12'	720
398	4	6' x 14'	840
399	4	6' x 16'	960

\*For weight of unit with wood box, add approx. 5 lbs. per sq. ft. for OA case size to weight shown. Freight Class 125.



## Premiere Freestanding Display Cases



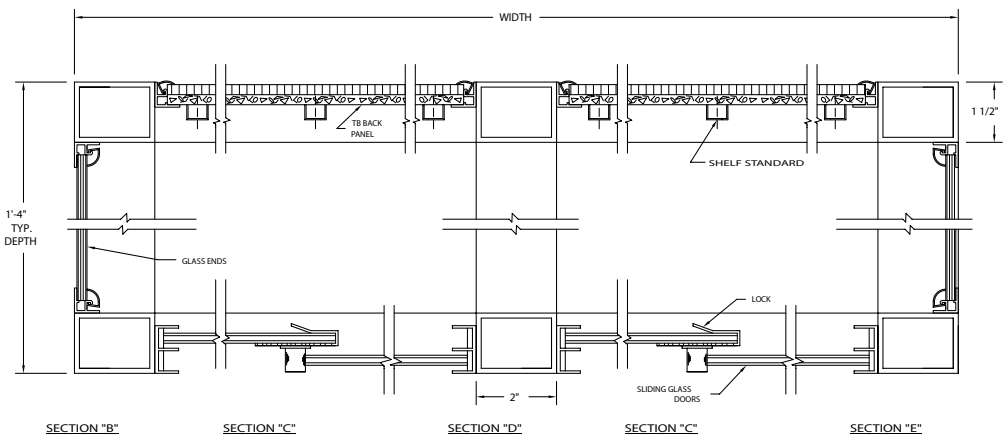
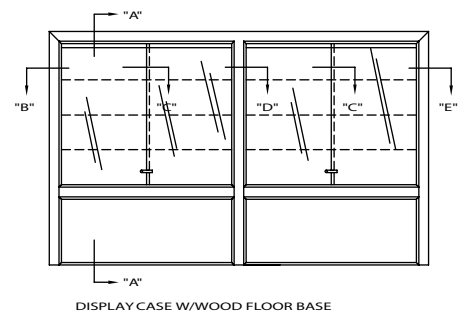
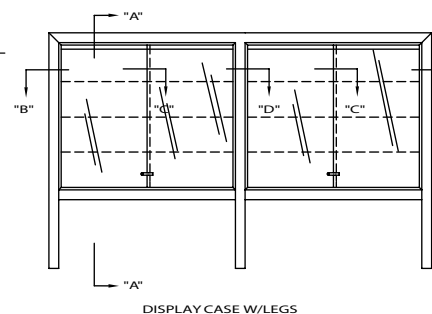
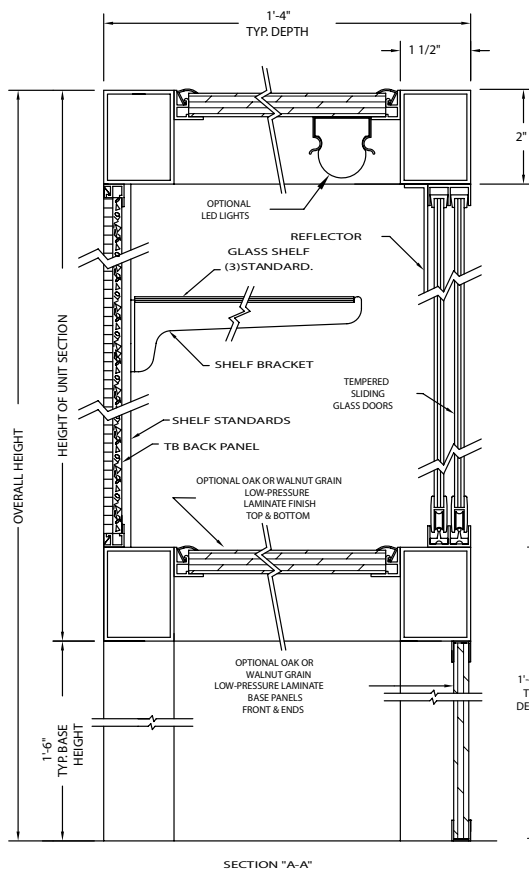
### Features:

- Constructed in one continuous piece, Premiere cases do not require wall support
- Tackable back panels in Claridge Cork, Fabricork, Guilford of Maine FR701 Fabric, Hook-Fab, and Tan Nucork. See pages 17-19 for color selections. Back panels also available in walnut or oak grain low pressure laminate.
- Frame is heavy-gauge satin anodize aluminum; inside depth is 13-3/4"
- Oak or walnut grain low pressure laminate base and aluminum legs are 18" high
- 3/16" tempered glass sliding doors with locks and keys, and three 6-, 8-, 10- or 12-inch wide adjustable glass shelves
- Floor leveling glides included

### Options:

- Medium or Dark Bronze Anodize or Powder Coat Finish
- LED Lighting
- Intermediate Sizes

Aluminum Legs	Wood Base	Pair of Doors	Size (HxW)	Weight lbs.
456	470	1	5'6" x 4' x 1'4"	320
457	471	1	5'6" x 5' x 1'4"	400
458	472	1	5'6" x 6' x 1'4"	480
463	474	2	5'6" x 8' x 1'4"	640
465	475	2	5'6" x 10' x 1'4"	800
467	476	3	5'6" x 12' x 1'4"	544
469	478	3	5'6" x 16' x 1'4"	1280





## Premiere Wall Mounted Display Cases



### Features:

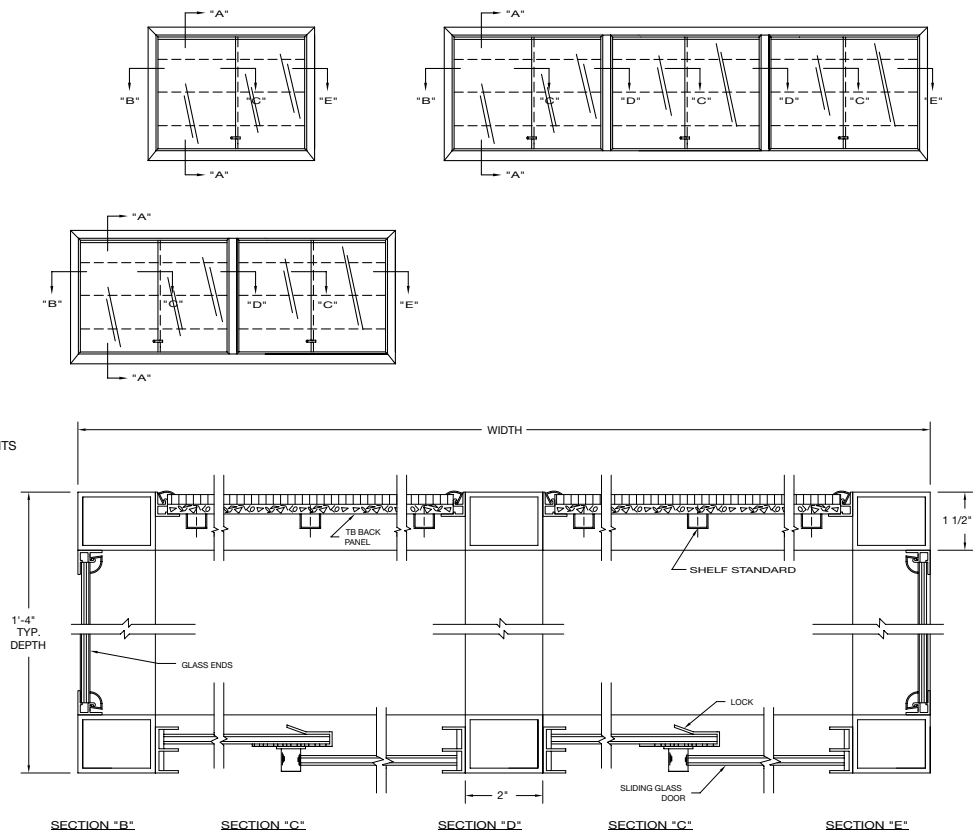
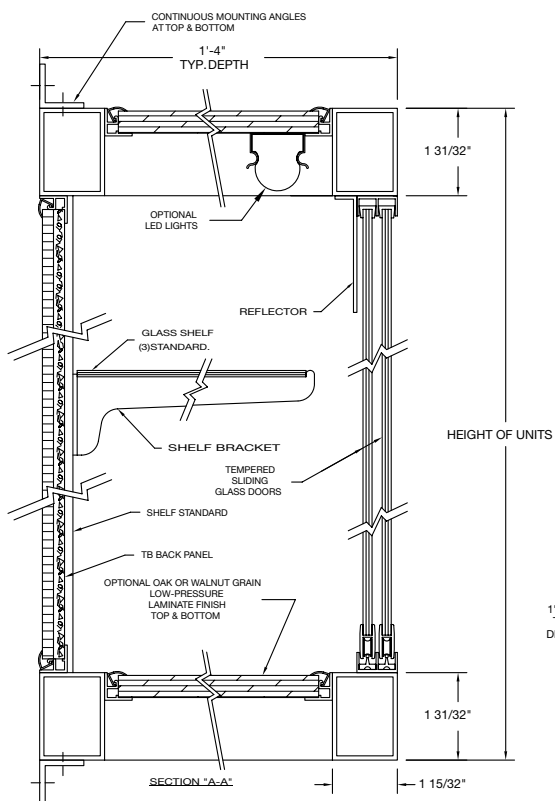
- Constructed of heavy-gauge satin anodize aluminum
- Inside depth is 13-3/4"
- Tackable back panels in Claridge Cork, Fabricork, Guilford of Maine FR701 Fabric, Hook-Fab, and Tan Nucork. See pages 17-19 for color selections. Back panels also available in walnut or oak grain low pressure laminate.
- 3/16" tempered glass sliding doors with locks and keys, and three 6-, 8-, 10- or 12-inch wide adjustable glass shelves
- Angle hangers

### Options:

- Intermediate sizes available
- LED Lighting
- Medium or Dark Bronze anodize in lieu of satin anodize
- Powder Coat finish in lieu of satin anodize

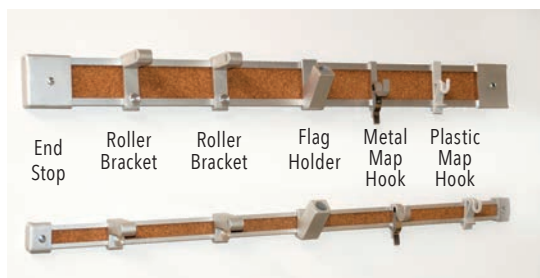
Number	Size (HxWxD)	Weight	Doors
479	4' x 3' x 1'4"	216 lbs.	1 pair
481	4' x 4' x 1'4"	288 lbs.	1 pair
482	4' x 5' x 1'4"	360 lbs.	1 pair
483	4' x 6' x 1'4"	432 lbs.	1 pair
484	4' x 8' x 1'4"	640 lbs.	2 pair
485	4' x 10' x 1'4"	800 lbs.	2 pair
486	4' x 12' x 1'4"	960 lbs.	3 pair
488	4' x 16' x 1'4"	1280 lbs.	3 pair

Note: Specify shelf with width, frame finish and type and color of back panel.





## Economy and Deluxe Map & Display Rail



### Features:

- 51EZ aluminum rail is 1" wide with a 5/8" tan cork insert (unless otherwise specified); 74EZ rail is 2" wide with a 1-5/8" tan cork insert
- Recessed screw guide insures easy installation – angled design keeps insert in place
- Furnished with 1-1/2" pan head screws
- Standard lengths for 51EZ: 6'6"; 8'6"; 10'6"; 12'6" and 16'6". 74EZ standard lengths are 6'3", 8'6", 10'6", 12'6" and 17'0".
- 51EZ weighs approx. 1/4-lb. per lin. ft.; 74EZ weighs 1/2-lb. per lin. ft.

	Economy Number	Deluxe Number	Length/Description
Rail	51EZ	74EZ	Less than 100 lin. ft.
	51EZA	74EZA	100 to 200 lin. ft.
	51EZB	74EZB	200 lin. ft. and over
Accessories	51D	74D	Display Rail no insert
	51C	76	Plastic Map Hook
	51M	76M	Metal Map Hook
	51RB	76RB	Roller Brackets
	51FH	76FH	Flag Holders
	51EZPES	74EZES	End Stops
	52ES	75ES	Flat End Stops

## 94 Combination Map Rail & Clip Strip



### Features:

- Offers the combined utility of a clip strip and a display rail all in one
- Extruded aluminum rail is approx. 3-1/4" wide overall; 1-5/8" tackable insert in your choice of tackable materials and colors. See pages 17-19 for materials and color selections.
- Factory installed clips (6" on center) are perfect for presentations using drawings, photos, maps, etc.
- CMR weighs approximately 1/2 lb. per lin. ft.

Number	Length
CMR94-2	2'0"
CMR94-4	4'0"
CMR94-6	6'0"
CMR94-8	8'0"

Note: Use same accessories as 74EZ

## EDR Exhibit Rail



### Features:

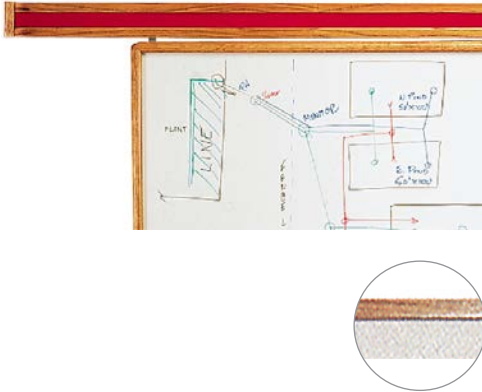
- EDR offers an attractive and economical way of adding exhibit space
- Rail is 3" wide and features a Fabricork tackable insert
- Mounts with 3/4" flat head screws (furnished) or with your double-sided tape
- EDR Rail weighs approximately 1/2 lb. per lin. ft.

### Options:

See page 19 for Fabricork insert colors available.

Number	Length
EDR3	3'
EDR4	4'
EDR6	6'
EDR8	8'
EDR12	12'

## WDR Wooden Display Rail



### Features:

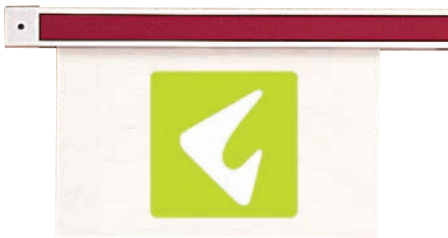
- WDR is available in 2 widths – approx. 3" wide with a 1-1/2" tackstrip and approx. 4" wide with a 2-1/2" tackstrip
- Rail mounts directly to wall and can butt to door facing or corner moldings. End stops (furnished) provide a finished look in any length
- Tackable insert in Claridge Cork, Fabricork, Guilford of Maine FR701 Fabric, and Hook-Fab. See pages 17-19 for color selections.
- Natural Oak finish

### Options:

- For optional 87 Clips for hanging small boards that use keyhole type hangers directly from WDR rail.

Number	Width	Length	Weight
WDR82-2	3"	2'	1.5 lbs.
WDR82-4	3"	4'	3 lbs.
WDR82-6	3"	6'	4 lbs.
WDR82-8	3"	8'	6 lbs.
WDR83-2	4"	2'	2 lbs.
WDR83-4	4"	4'	4 lbs.
WDR83-6	4"	6'	6 lbs.
WDR83-8	4"	8'	8 lbs.

## 79 Hang-Tight Rail System



### Features:

- Combines standard aluminum map and display rail with a specially designed extrusion that holds posters, pamphlets, blueprints, etc., securely in place without tacking
- For easy removal, simply pull up and out
- Tackable insert is approx. 1-5/8" wide, available in your choice of materials and colors.

See pages 17-19 for options

- Rail and gripping mechanism are made of heavy gauge aluminum
- HT79 weighs approximately 1 lb. per lin. ft.

Number	Length
HT79-2	2'0"
HT79-4	4'0"
HT79-6	6'0"
HT79-8	8'0"

## CS Clip Strips

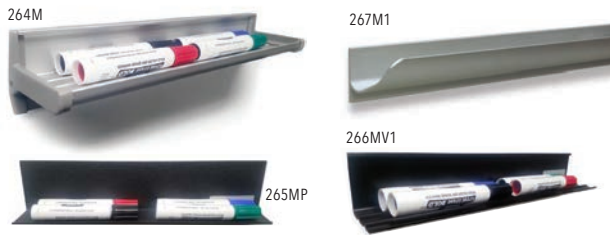


### Features:

- Satin anodized aluminum strip has steel clips on 3" centers
- Clip Strip installs directly to wall with screws or with your double-sided tape
- Single sheets of paper or heavy posters can be displayed without tape, tacks or pins
- CS weighs approximately 1/4 lb. per. lin. ft.

Length	Number
18"	CS18
24"	CS24
36"	CS36
48"	CS48
60"	CS60

## Magnetic Accessory Trays



- 264M – Satin anodize finish aluminum tray is 2-3/4" deep
- 264MP – Powder coat finish aluminum tray
- 265M – Satin anodize finish aluminum tray is 1-5/8" deep
- 265MP – Powder coat finish aluminum tray
- 266MV1 – Black vinyl tray is 2-1/2" deep
- 267M1 – Satin anodize finish aluminum tray is 1-1/2" deep

### Features:

- Aluminum and vinyl – magnetic trays adhere to all Claridge porcelain enamel steel markerboards and chalkboards as well as other steel surfaces
- Magnet-backed trays are ideal for chalkboard and markerboard accessories, organizing your desk top, displaying art, and copyboards
- Not for use on Glass Markerboards

Number	Length	Finish
264M1	1'	Satin
264MP1	1'	Powder
265M1	1'	Satin
265MP1	1'	Powder
266MV1	1'	Vinyl
267M1	1'	Satin

## LCS Markers



### Options:

- LCS668-2 (2 LCS markers and 1 microfiber eraser cloth)
- LCS668-4 (4 LCS markers and 1 microfiber eraser cloth)

### Features:



- LCS dry-erase markers are available in 1 dozen lots of each color and as assorted dozens; 4-packs (broad top) available assorted

Number	Color	Number	Color
LCS669	Red	LCS769	Fine Line – Red
LCS670	Blue	LCS770	Fine Line – Blue
LCS671	Black	LCS771	Fine Line – Black
LCS672	Green	LCS773	Fine Line – Assorted
LCS673	Assorted	LCS673-4	4-Pack – Assorted

## MICROFIBER Eraser Cloth



### Features:



- Microfiber eraser cloth is 12" x 12"
- Furnished with small magnet for easy hanging on board surface
- Erases cleanly with no smearing
- Designed to reduce marker residue build-up

Number	Quantity
ECM227E	Each
ECM227D	Dozen
ECM227G	Gross

## LCS683 Claridge White Board Cleaner



### Features:

- Cleans and restores LCS and MLC Markerboard surfaces
- Convenient 8-oz. pump spray bottle and gallon refills



Number	Description
LCS683	Board Cleaner
LCS683D	Board Cleaner – dozen
LCS683G	Board Cleaner – gallon

## Standard Sewn Eraser



### Features:

- Ideal for use on markerboard or chalkboard surface
- Felt eraser provides dependable service and good cleaning qualities
- 5" x 2" x 1-1/4"



Number	Description
LCS227D	Standard Sewed Eraser – Dozen Weight, 2 lbs.
LCS227G	Standard Sewed Eraser – Gross Weight, 20 lbs.

## 80 Partition Panel Clips



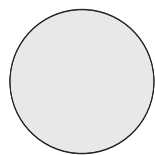
### Features:

- Spring steel clips fit over the top of any 2" thick partitions. Small prongs fit underneath the board trim

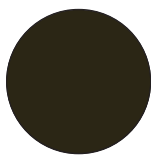


Number	Description
80	2"
80-3	3"

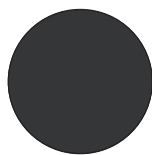
## Aluminum Finishes



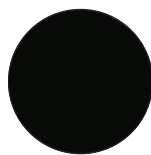
Satin Anodized



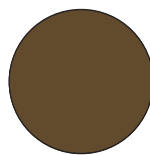
Medium Bronze



Dark Bronze

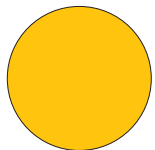


302P Matte Black

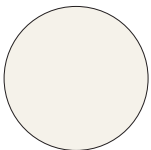


314P Bronze

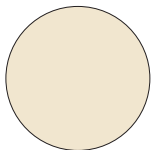
## Powder Coat Finishes for Aluminum



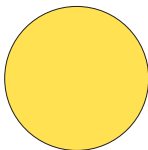
RAL1003  
Signal Yellow



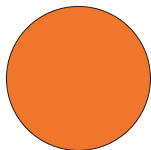
RAL1013  
Oyster White



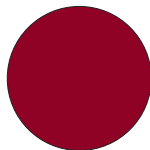
RAL1015  
Light Ivory



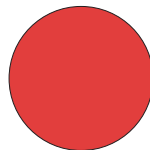
RAL1018  
Zinc Yellow



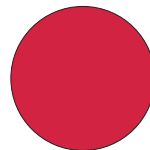
RAL2009  
Taffic Orange



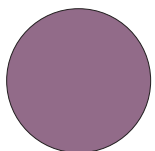
RAL3003  
Ruby Red



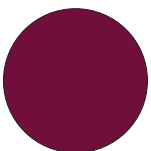
RAL3018  
Strawberry Red



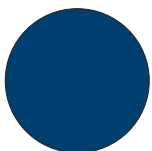
RAL3020  
Traffic Red



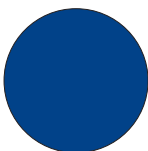
RAL4001  
Red Lilac



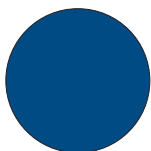
RAL4004  
Claret Violet



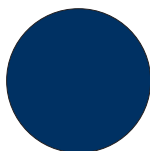
RAL5000  
Violet Blue



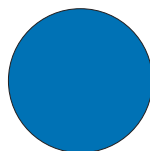
RAL5002  
Ultramarine Blue



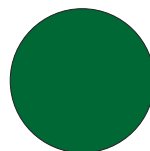
RAL5005  
Signal Blue



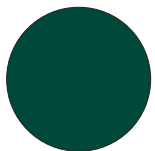
RAL5013  
Cobalt Blue



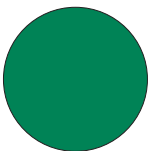
RAL5015  
Sky Blue



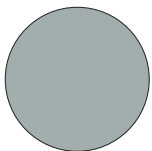
RAL6002  
Leaf Green



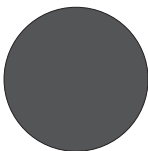
RAL6005  
Moss Green



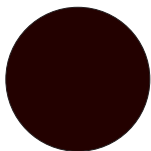
RAL6024  
Traffic Green



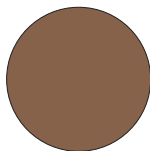
RAL7001  
Silver Gray



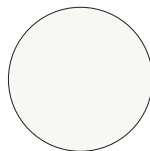
RAL7015  
Slate Gray



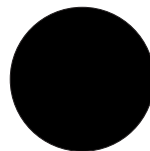
RAL8017  
Chocolate Brown



RAL8025  
Pale Brown



RAL9003  
Signal White



RAL9005  
Jet Black

## Optional Textured Finishes



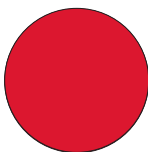
Goldtone Vein



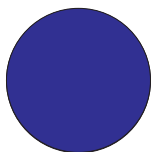
Antique Copper Vein



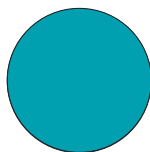
Bonded Silver Vein



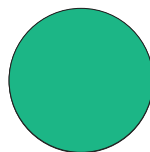
Candy Red



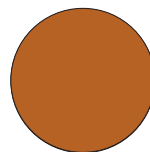
Candy Purple



Candy Teal



Transparent Green



Copper Powder

## Optional Transparent Finishes

# SPECIFICATION INFORMATION

## DESCRIPTION OF WORK

Section Includes:

1. Porcelain enamel chalkboards
2. Porcelain enamel markerboards
3. Tackboards and accessories

Related Sections:

1. Marker Walls and Tack Walls
2. Vertical and Horizontal Sliding Units
3. Glass Markerboards
4. Directories
5. Display Casework

## REFERENCED STANDARDS

- A. ASTM-E 84
- B. ASTM B221
- C. PEI-1002

## SUBMITTALS

- A. Shop Drawings: Provide shop drawings for each type of visual display board required.
- B. Product Data: Provide technical data for materials specified. Include Material Safety Data Sheets, when applicable.
- C. Samples:
  1. Manufacturer's color charts
  2. Composition samples of face, core, backing material and trim to illustrate finish, color and texture.

## OPERATION & MAINTENANCE

Include data on regular cleaning, stain removal, and precautions

## REGULATORY REQUIREMENTS

Conform to applicable code for flame/smoke rating in tackboards in accordance with ASTM-E 84.

## QUALITY ASSURANCE

Provide items in this section as manufactured by: Claridge Products and Equipment, Inc. LCS porcelain writing surface is GREENGUARD and GREENGUARD GOLD certified.

## FIELD CONDITIONS

Field measure prior to preparation of shop drawings and fabrication to ensure proper fit.

## WARRANTY

Submit "Life of the Building" warranty, stating that under normal usage and maintenance, and when installed in accordance with manufacturer's instructions and recommendations, Claridge porcelain enamel steel chalkboard and markerboard writing surfaces are guaranteed for the life of the building. Guarantee covers replacement of defective boards but does not include removal or reinstallation cost.

## MANUFACTURERS

Visual display boards - chalkboards, markerboards, and tackboards - as manufactured by: Claridge Products & Equipment, Inc., Harrison, Arkansas 72602

## MATERIALS

- A. All visual display boards shall be Series \_\_\_\_ (architect to select from Series 1, 3, 4, 5, 6, 8, 10, 185, 200, or Aspire) factory laminated and factory framed chalkboards, markerboards or tackboards.
- B. Porcelain enamel Markerboards/ Chalkboards: All porcelain enamel markerboards and chalkboards shall be manufactured in accordance with the Porcelain Enamel Institute's specifications. The steel surface is pre-cleaned to ensure complete bond between the steel and the porcelain surface.
  1. LCS3 Markerboard and Porcelain Chalkboard: Made from cold-rolled steel, during a 3-coat process both steel surfaces receive a ground coat of porcelain enamel. Then, a color cover coat of porcelain is applied to one surface of the ground coat and is fusion bonded to the steel substrate at temperature necessary to reduce steel and porcelain stresses.
    - a. Face Sheet: LCS3 or Porcelain Chalkboard

- b. Core Material: 7/16" Medium Density Fiberboard (MDF)
  - c. Backing: Moisture barrier back
2. Laminations: Shall be hot-type neoprene contact adhesive applied to both surfaces automatically. Each substrate to have minimum of 80% covering with 1.5-2.0 dry mils of adhesive. Panel components shall have uniform pressure applied mechanically over entire area. Laminations shall be made by face sheet manufacturer.
  3. Sizes: Standard height is 4 feet (5' steel optional.) Porcelain markerboards and chalkboards shall be available in single piece lengths up to 16 feet.
- C. Tackboards: Architect to select from tackboards composed of 1/4" thick self-healing, burlap backed Claridge cork; Fabricork vinyl fabric on cork underlay; Hook-Fab fabric on cork underlay; Designer polyester fabric on cork underlay; or 1/4" Tan Nucork, all on 1/4" hardboard backing.
  - D. Metal Trim and Accessories: Provide Series \_\_\_\_ aluminum extrusions as manufactured by Claridge Products and Equipment, Inc. Trim shall be heavy gauge extruded aluminum and shall meet or exceed ASTM B221 Alloy Standards. Finish to be etched and anodized satin finish standard. Color Anodized and Powder Coat Paint finished trim optional. Chalktray/ Marker Tray: Standard continuous, solid type

- aluminum Chalk Tray/ Marker Tray with ribbed section and injection molded end closures, or standard continuous hollow tray with injection molded end closures; metal end closures optional.
- Map Rail: Standard continuous 1" (2" optional) map rail with cork insert and end stops at the top of each chalkboard or markerboard, complete with the following accessories:
1. Map Hooks: Provide 2 map hooks for each map rail.
  2. Roller Brackets: Provide \_\_\_\_ per map rail.
  3. Flag Holder: Provide \_\_\_\_ per map rail.
- E. Colors: As selected from manufacturer's standard colors. Color charts on request.
  - F. Adhesive: As recommended by manufacturer.

## FABRICATION

- A. Shop assembly: Provide factory assembled chalkboard, markerboard, and tackboard units, except where field assembled units are required.
  1. LCS3 Porcelain Enamel Steel Markerboards or Porcelain Enamel Steel Chalkboards
    - a. Face Sheet: Porcelain Enamel Steel
    - b. Core: 7/16" MDF
    - c. Backing: Moisture barrier back
  2. Claridge Cork Tackboards
    - a. Face Sheet: 1/4" cork
    - b. Binder: burlap
    - c. Backing: 1/4" hardboard

## PROJECT CONDITIONS

- A. Verify before installation that interior moisture and temperature approximate normal occupied conditions.
- B. Verify that wall surfaces are prepared and ready to receive boards.

## INSTALLATION

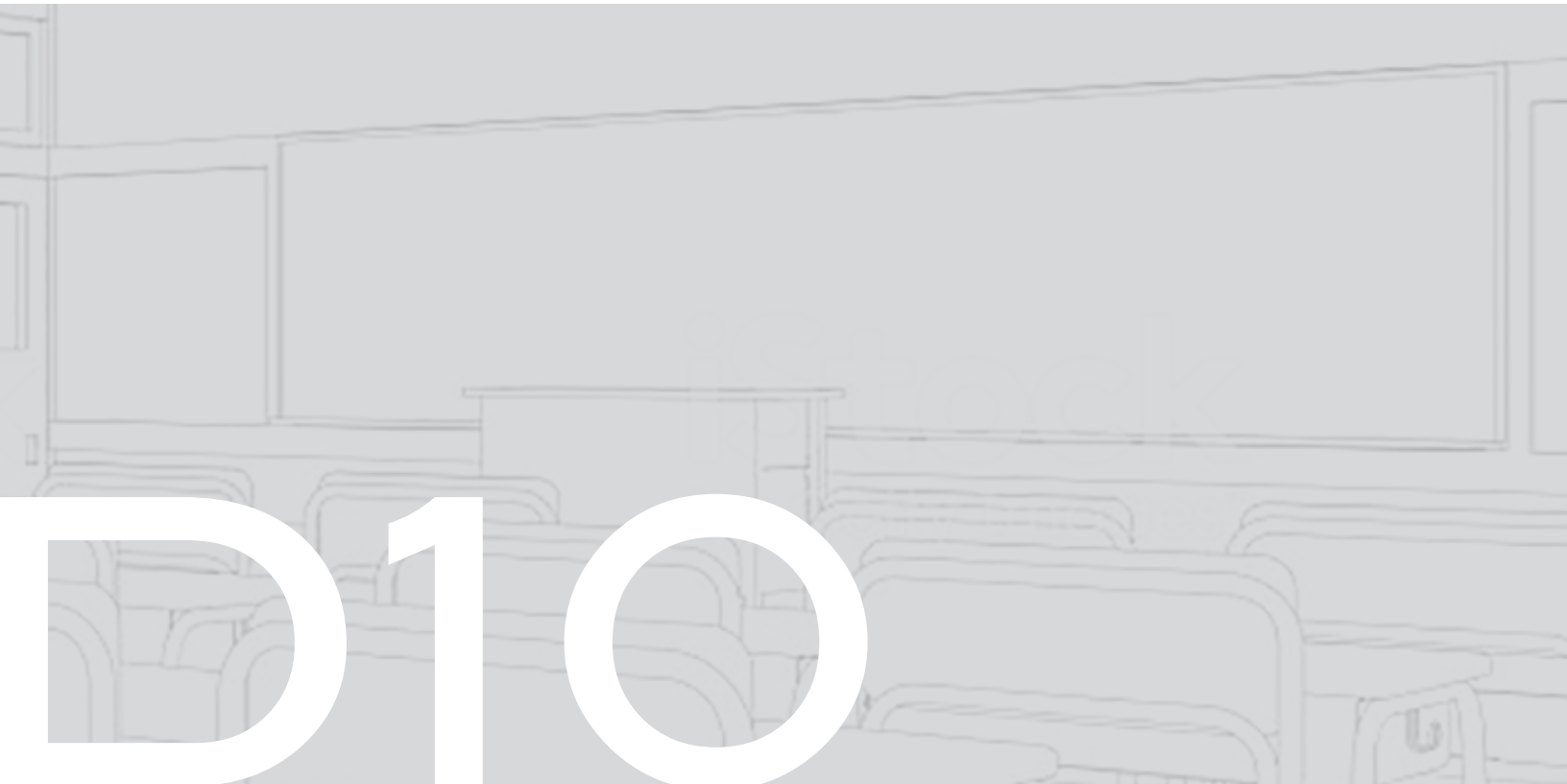
- A. Deliver factory built units completely assembled in one piece without joints wherever

- possible. Where dimensions exceed panel size, provide 2 or more pieces of equal length as acceptable at the factory, disassemble for delivery, and make final joints at the job site. Use H-bar at joints to maintain alignment.
- B. Follow manufacturer's instructions for storage and handling of units before installation.
  - C. Install level and plumb, keeping perimeter trim straight in accordance with manufacturer's recommendations.

## ADJUST AND CLEAN

- A. Verify that all required accessories are installed for each unit.
- B. At completion of work, clean surfaces and trim in accordance with manufacturer's recommendations, leaving all materials ready for use.

See [www.claridgeproducts.com](http://www.claridgeproducts.com) for complete specifications and CAD library.



**Claridge**  
The Writing Surface Experts®

800.434.4610  
[claridgeproducts.com](http://claridgeproducts.com)

**material  
bank**   
A SANDOW COMPANY

December 2020