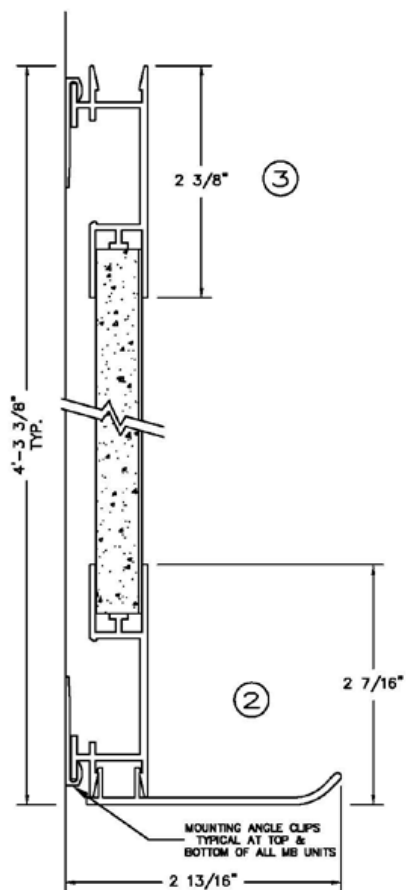


1. Determining desired position on wall and mark the height of the bottom of the board. Drill holes for mounting clips 2" above the desired height of board, allowing the clip to rest on the screw when securing to the wall.
2. Mount bottom hangers to wall with required type wall fastener. Wall fasteners not furnished.
3. Using a straight edge, shim where necessary so that all anchor points of hanger are in line with level. Anchor securely to wall.
4. Determine height for top of board, measure down 1 1/2" and drill holes for clips.
5. Hold the clip in the highest position when tightening to the wall and do not overtighten as the clip will need to be tapped down to hold firmly against the board.
6. If adhesive is being used, apply glue to the back of the board. Position the board on the wall and rest the bottom of the board's built-in hanger on the clips at bottom and press the board to the wall, tapping down on the clips at top to engage the clips and the trim's built-in hanger.
7. For boards with accessory tray, insert backing of tray into trim and rotate up into position. A rubber mallet can be used to tap the tray into place. (Note: If mallet is needed to "seat" the tray, be sure to use as close to back of tray as possible.)



TYPICAL ELEVATION  
NTS

