

Claridge®



GSA

CATALOG 2023



Authorized Federal Supply Schedule Price List

Schedule Title:

Multiple Award Schedule FSC Group Furniture and Furnishings FSC Class 7110 and 7105

Commercial and Government Entity (CAGE) Code:

52612

Contract Number:

GS-28F-0042U

Contract Period:

September 3, 2013 to September 2, 2023

Contractor:

Claridge Products & Equipment, Inc.
805 Cottonwood Road
Annex 3
Harrison, AR 72601
Phone: 870-743-2200
Fax: 870-743-1908

Contract Administration Source:

North American Marketing, Inc
Lighthouse Office Suites
510 146th Street, Suite 3
Ocean City, MD 21842
Phone: 410-721-8803
Fax: 410-721-0079

Business Size:

Small Business

On-Line Access to contract ordering information, terms and conditions, up-to-date pricing, and the Option to create an electronic delivery order is available through GSA Advantagel, a menu-driven database system.

The INTERNET address for GSA Advantagel is: <http://www.gsa.gov>.



Connect X2 Mobile Display

Markerboard & Acoustic Tackboard Displays

- Double-sided display boards available in Claridge Glass and LCS Porcelain® writing surfaces, Claridge Acoustic and other tackable surfaces, and combination surface options
- Design allows room division or nesting for convenient storage
- Writing surfaces accept magnets and enhance functionality
- Furnished with locking and non-locking casters for mobility or stationary
- Standard full height is 72" from the floor
- Full height mobiles available in widths - 30", 36", and 48"
- Satin anodized aluminum frame is available in 24 standard powder coat colors, 180 optional powder coat colors, and unlimited custom colors

See page 11

GSA TERMS & CONDITIONS

Contract Number: GS-28F-0042U

Contract Period: September 3, 2013 to September 2, 2023

- 1a. Awarded Special Item Numbers:
337215SBSA Wall Units and Displays
337127LFSB Library Furniture
337127TLSB Tables and Lecterns
OLM Order Level Materials
2. Maximum order: \$250,000
3. Minimum order: \$100 minimum order
4. Geographic coverage:
48 contiguous states and Washington, D.C.
5. Point of Production:
Claridge Products
805 Cottonwood Road Annex 3, Harrison, AR 72601
6. Discount from List:
66.7% off Claridge Products current commercial price list
7. Quantity discounts: None
8. Payment terms: Net 30 days
9. Government commercial credit card:
a) Claridge Products will accept government purchase card.
b) No additional discount will be offered for orders placed using the purchase card.
10. Foreign items:
All items manufactured in the USA
11. Time of delivery:
a) Stock items 30 days ARO,
Non-stock items 45 days ARO
b) Expedited time of delivery: Contact customer service
c) Overnight delivery: Contact customer service
d) Urgent requirements: Contact factory representative 870-743-2200
12. FOB Point: Origin freight prepaid & add
13. Ordering Address:
Claridge Products
805 Cottonwood Road, Annex 3
Harrison, AR 72601
Phone: 870-743-2200 Fax: 870-743-1908
14. Payment Address:
Claridge Products
805 Cottonwood Road, Annex 3
Harrison, AR 72601
15. Warranty:
Claridge Products standard commercial warranty
16. Export packaging charges: Quoted upon request
17. Terms & conditions of government commercial credit card acceptance: Claridge Products will accept the government commercial credit card but will not offer any additional discounts.
18. Terms & conditions of rental, maintenance & repair: N/A
19. Terms & conditions of Installation: N/A
20. Terms & conditions of repair parts indicating date of parts price lists and any discounts from list prices: N/A
- 20A. Terms and conditions for any other services:
Contact factory representative 870-743-2200
21. Service & Distribution points:
Contact factory representative 870-743-2200
22. Participating Dealers:
Contact: North American Marketing, Inc.
Lighthouse Office Suites
510 146th Street, Suite 3, Ocean City, MD 21842
Phone: 410-721-8803 Fax: 410-721-0079
23. Preventative maintenance: N/A
24. Special attributes such as environmental attributes:
a. Claridge Products will seek actively to reduce its impact on the environment to the lowest practicable level by ensuring that all operations and activities of the company employ the best practice in respect to the environment. Any threat of pollution from its activities will be identified and either eliminated or controlled effectively.
25. DUNS Number: 00-633-8099
UEI Number: KF4JFJ2LPFL3
26. Claridge Products is registered in the Central Contractor registration (CCR) database

QUALITY & SERVICE

Claridge visual display products and accessories offer unmatched performance and high style. A state-of-the-art production facility enables our skilled team to control quality at every step in the process. In addition to offering a broad selection of standard colors, surfaces and finishes, we can custom-craft most products to perfectly suit any space or task. Let our friendly and knowledgeable customer service staff help you create exactly what you need.

Contemporary business operates at a lightning pace, so we maintain a wide variety of standard product lines in stock for fast shipping and delivery. For custom product orders, Claridge Priority Response and On-Time Shipping provide a firm ship date.

We also conduct a number of “green” initiatives—from in-house recycling programs to using renewable resources and alternative materials—to reduce our environmental footprint and minimize exposure to harmful substances.

At Claridge, we work to earn your trust and satisfaction from start to finish. That’s the way we do business — today and always.

Weights in the catalog are estimates only and can vary with method of packing.

CONTENTS

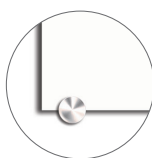
6	Markerboards
7	Markerboards & Tack Boards
9	Tack Boards
10	Bulletin Boards
11	Mobile Boards
12	Space Dividers / Sliding Walls
13	Display Cases
14	Accessories
15	Writing Surface & Acoustic Color Options
16	Material Color Options
17	Frames & Finishes Color Options

Claridge Glass - Magnetic

1/4" tempered low-iron glass dry-erase writing surface with steel back. Eased corners and polished edges. Comes with 4 rare earth magnets. Furnished in Brilliant White if no color specified. 10 standard colors; 180 optional colors.



Invisi-Mount



Standoff
Edge Mount



Standoff Through
Glass Mount

Magnetic Glass with Invisi-Mount

Number	Size (HxW)	Weight	Price
MGMI-23	24" x 36"	48 lbs.	\$782
MGMI-34	36" x 48"	96 lbs.	\$1,233
MGMI-35	36" x 60"	120 lbs.	\$1,804
MGMI-44	48" x 48"	128 lbs.	\$1,550
MGMI-45	48" x 60"	160 lbs.	\$1,987
MGMI-46	48" x 72"	195 lbs.	\$2,254
MGMI-48	48" x 96"	256 lbs.	\$2,861
MGMI-410	48" x 120"	320 lbs.	\$3,469
MGMI-412	48" x 144"	384 lbs.	\$4,387
MGMI-56	60" x 72"	240 lbs.	\$2,614
MGMI-58	60" x 96"	320 lbs.	\$3,299
MGMI-510	60" x 120"	400 lbs.	\$3,955

Magnetic Glass with Stand-off Edge Mount

Number	Size (HxW)	Weight	Price
MGM23	24" x 36"	48 lbs.	\$897
MGM34	36" x 48"	96 lbs.	\$1,377
MGM35	36" x 60"	120 lbs.	\$1,898
MGM44	48" x 48"	128 lbs.	\$1,718
MGM45	48" x 60"	160 lbs.	\$2,220
MGM46	48" x 72"	195 lbs.	\$2,488
MGM48	48" x 96"	256 lbs.	\$3,147
MGM410	48" x 120"	320 lbs.	\$3,825
MGM412	48" x 144"	384 lbs.	\$4,960
MGM56	60" x 72"	240 lbs.	\$2,857
MGM58	60" x 96"	320 lbs.	\$3,547
MGM510	60" x 120"	400 lbs.	\$4,290

Magnetic Glass with Stand-off Through Glass Mount

Number	Size (HxW)	Weight	Price
MGM23-TG	24" x 36"	48 lbs.	\$1,103
MGM34-TG	36" x 48"	96 lbs.	\$1,495
MGM35-TG	36" x 60"	120 lbs.	\$2,192
MGM44-TG	48" x 48"	128 lbs.	\$1,781
MGM45-TG	48" x 60"	160 lbs.	\$2,379
MGM46-TG	48" x 72"	195 lbs.	\$2,610
MGM48-TG	48" x 96"	256 lbs.	\$3,148
MGM410-TG	48" x 120"	320 lbs.	\$3,930
MGM56-TG	60" x 72"	240 lbs.	\$3,015
MGM58-TG	60" x 96"	320 lbs.	\$3,641
MGM510-TG	60" x 120"	400 lbs.	\$4,460

Standard Freight

Profile Frameless Porcelain

The Profile Frameless Markerboard's incredibly smooth Claridge LCS Porcelain surface delivers a great writing experience that will stand the test of time. With simple installation, these stylish, low profile markerboards appear to float on the wall. Claridge LCS Porcelain steel accepts magnets, won't ghost or stain, and is warrantied for life. Available in LCS White, Light Gray, or Beige color options and in 1/2" panel widths.



1/2" Profile with Invisi-Mount

Number	Size (HxW)	Weight	Price
FPM12-0304-Z	36" x 48"	48 lbs.	\$1,010
FPM12-0404-Z	48" x 48"	64 lbs.	\$1,070
FPM12-0405-Z	48" x 60"	80 lbs.	\$1,300
FPM12-0406-Z	48" x 72"	96 lbs.	\$1,350
FPM12-0408-Z	48" x 96"	128 lbs.	\$1,610
FPM12-0504-Z	60" x 48"	80 lbs.	\$1,480
FPM12-0506-Z	60" x 72"	120 lbs.	\$2,050
FPM12-0508-Z	60" x 96"	160 lbs.	\$2,620

Standard Freight

800 Series

Aluminum Trim - LCS porcelain enamel steel dry-erase writing surface markerboards have satin anodize frame. White furnished if color not specified. Full length marker tray and map rail with 2 map hooks. Angle clip hangers. Adhesive recommended.



800 Series - 5/8" Face Trim

Number	Size (HxW)	Weight	Price
818L	4' x 4'	56 lbs.	\$590
820L	4' x 5'	70 lbs.	\$724
822L	4' x 6'	84 lbs.	\$762
826L	4' x 8'	112 lbs.	\$961
830L	4' x 10'	140 lbs.	\$1,195
834L	4' x 12'	168 lbs.	\$1,384
838L	4' x 16'	224 lbs.	\$1,966
Optional Powder Coat Add - 800 Series up to 4' x 6'			\$152
Optional Powder Coat Add - 4' x 8' and larger			\$200

Standard Freight

LCS Deluxe

Aluminum Trim - Porcelain enamel steel writing surface. Satin anodize aluminum frame with full length marker tray. Furnished with markers and eraser.



No map rail

LCS Deluxe - 5/8" Face Trim

Number	Size (HxW)	Weight	Price
LCS2044	4' x 4'	56 lbs.	\$585
LCS2046	4' x 6'	84 lbs.	\$799
LCS2048	4' x 8'	112 lbs.	\$999
LCS2410	4' x 10'	140 lbs.	\$1,311
LCS2412	4' x 12'	168 lbs.	\$1,500
LCS2416	4' x 16'	224 lbs.	\$2,005

Standard Freight



With map rail

LCS Deluxe - 5/8" Face Trim - Map Rail

Map rail with cork insert and map hooks

Number	Size (HxW)	Weight	Price
LCS2034R	3' x 4'	42 lbs.	\$537
LCS2044R	4' x 4'	56 lbs.	\$595
LCS2046R	4' x 6'	84 lbs.	\$823
LCS2048R	4' x 8'	112 lbs.	\$1,031
LCS2410R	4' x 10'	140 lbs.	\$1,362
LCS2412R	4' x 12'	168 lbs.	\$1,557
LCS2416R	4' x 16'	224 lbs.	\$2,080

Standard Freight

Concept Aluminum Frame Board

Concept features a narrow face aluminum trim - 5/16" wide, with an eased edge. Aluminum is 1/8" thick adding depth to the trim perimeter. Markerboards are Claridge LCS Porcelain enamel steel; tackboards can be Claridge Cork, or standard Guilford, Carnegie and Maharam fabrics.



Porcelain Markerboard



Trim Detail-Tackboard

Claridge LCS Porcelain Markerboard

Number	Size (HxW)	Weight	Price
CP-0203-MB	24" x 36"	24 lbs.	\$285
CP-0304-MB	36" x 48"	42 lbs.	\$452
CP-0404-MB	48" x 48"	56 lbs.	\$552
CP-0405-MB	48" x 60"	70 lbs.	\$721
CP-0406-MB	48" x 72"	84 lbs.	\$796
CP-0408-MB	48" x 96"	112 lbs.	\$1,003
*CP-0410-MB	48" x 120"	140 lbs.	\$1,263
*CP-0412-MB	48" x 144"	168 lbs.	\$1,471
*CP-0506-MB	60" x 72"	105 lbs.	\$1,215
*CP-0508-MB	60" x 96"	140 lbs.	\$1,474
*CP-0510-MB	60" x 120"	200 lbs.	\$1,901
*CP-0512-MB	60" x 144"	240 lbs.	\$2,499

*If in 2 pieces, must use adhesive

Claridge Cork Tackboard

Number	Size (HxW)	Weight	Price
CP-0203-COR	24" x 36"	18 lbs.	\$233
CP-0304-COR	36" x 48"	36 lbs.	\$430
CP-0404-COR	48" x 48"	48 lbs.	\$528
CP-0405-COR	48" x 60"	60 lbs.	\$701
CP-0406-COR	48" x 72"	72 lbs.	\$741
CP-0408-COR	48" x 96"	96 lbs.	\$937

Fabric Tackboard

Number	Size (HxW)	Weight	Guilford	Carnegie	Maharam
CP-0203-	24" x 36"	12 lbs.	\$208	\$299	\$367
CP-0304-	36" x 48"	24 lbs.	\$385	\$566	\$579
CP-0404-	48" x 48"	32 lbs.	\$475	\$709	\$593
CP-0406-	48" x 72"	48 lbs.	\$698	\$1,019	\$867
CP-0408-	48" x 96"	64 lbs.	\$876	\$1,304	\$1,102

For Guilford fabrics, specify -FG

Carnegie - FC; Maharam -FM. Specify color requested.

Standard Freight

Evolve Markerboard / Tackboard

Evolve Markerboards feature a smooth, low gloss Claridge LCS Porcelain surface and a unique high/low profile aluminum trim. Wide face trim at top and bottom is 2-3/8"; narrow trim at sides is 5/16". Snap-in accessory tray is designed with a lip to hold accessories; tray is 2" wide. Tack surface available in Claridge Cork or standard Carnegie, Guilford and Maharam fabrics.



Claridge LCS Porcelain Markerboard

Number	Size (HxW)	Weight	Price
EV-0304-MB	36" x 48"	42 lbs.	\$550
EV-0404-MB	48" x 48"	56 lbs.	\$708
EV-0405-MB	48" x 60"	70 lbs.	\$861
EV-0406-MB	48" x 72"	84 lbs.	\$928
EV-0408-MB	48" x 96"	112 lbs.	\$1,151
EV-0410-MB	48" x 120"	140 lbs.	\$1,611

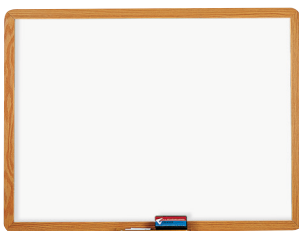
Tackboard

Number	Size (HxW)	Weight	Price
EV-0404-TB	48" x 48"	48 lbs.	\$842
EV-0406-TB	48" x 72"	72 lbs.	\$1,075
EV-0408-TB	48" x 96"	96 lbs.	\$1,308
EV-0504-TB	60" x 48"	60 lbs.	\$953
EV-0604-TB	72" x 48"	72 lbs.	\$1,067

Standard Freight

2900 Series

Wood Trim, Radius Corners - Claridge LCS Porcelain markerboard with Natural or Medium Oak finish trim. (White LCS furnished for writing surface if color not specified.) Furnished with 12" pre-drilled marker tray and Z-bar clips for hanging.



2900 Series - 1-3/4" Flat Face Wood Trim

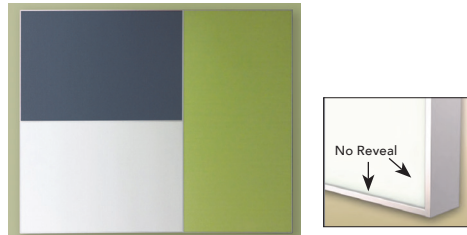
Number	Size (HxW)	Weight	Price
2923L	2' x 3'	21 lbs.	\$404
2934L	3' x 4'	42 lbs.	\$539
Wood Finish Add			\$54
Custom Match Add			\$473

Standard Freight

Connect X2 Modular System

No Reveal

Connect X2 Series boards have a narrow 1/8" face aluminum frame. Select from: Markerboards in Claridge LCS Porcelain enamel steel or Magnetic Glass; Tackboards in Claridge Cork or Carnegie, Guilford and Maharam fabrics. Available in sizes from 18" x 24" to 4' x 8'. Install individually or in groupings.



Claridge LCS Porcelain Markerboard

Number	Size (HxW)	Weight	Price
X2-MCS-1824-MB	18" x 24"	12 lbs.	\$307
X2-MCS-2436-MB	24" x 36"	24 lbs.	\$400
X2-MCS-3648-MB	36" x 48"	48 lbs.	\$592
X2-MCS-4848-MB	48" x 48"	64 lbs.	\$720
X2-MCS-4872-MB	48" x 72"	96 lbs.	\$992
X2-MCS-4896-MB	48" x 96"	128 lbs.	\$1,273

Claridge Glass Markerboard

Number	Size (HxW)	Weight	Price
X2-MCS-2436-MG	24" x 36"	48 lbs.	\$868
X2-MCS-3648-MG	36" x 48"	96 lbs.	\$1,288
X2-MCS-4848-MG	48" x 48"	128 lbs.	\$1,670
X2-MCS-4872-MG	48" x 72"	195 lbs.	\$2,799
X2-MCS-4896-MG	48" x 96"	256 lbs.	\$3,037

Claridge Cork Tackboard

Number	Size (HxW)	Weight	Price
X2-MCS-1824-CO	18" x 24"	11 lbs.	\$332
X2-MCS-2436-CO	24" x 36"	21 lbs.	\$376
X2-MCS-3648-CO	36" x 48"	42 lbs.	\$610
X2-MCS-4848-CO	48" x 48"	56 lbs.	\$709
X2-MCS-4872-CO	48" x 72"	84 lbs.	\$944
X2-MCS-4896-CO	48" x 96"	112 lbs.	\$1,204

Fabric Tackboard

Number	Size (HxW)	Weight	Guilford	Carnegie	Maharam
X2-MCS-1824-	18" x 24"	8 lbs.	\$356	\$375	\$355
X2-MCS-2436-	24" x 36"	15 lbs.	\$377	\$458	\$420
X2-MCS-3648-	36" x 48"	30 lbs.	\$614	\$774	\$699
X2-MCS-4848-	48" x 48"	40 lbs.	\$714	\$931	\$827
X2-MCS-4872-	48" x 72"	60 lbs.	\$916	\$1,258	\$1,086
X2-MCS-4896-	48" x 96"	80 lbs.	\$1,214	\$1,642	\$1,440

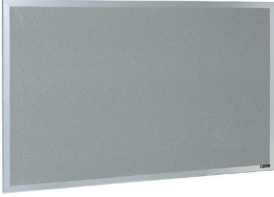
For Guilford fabrics, specify -FG

Carnegie - FC; Maharam -FM. Specify color requested.

Standard Freight

800 Series Tackboard

Aluminum Trim - 5/8" face trim - Tan Nucork, Claridge Cork, Guilford of Maine FR701 Fabric and Fabricork tackboards have satin anodize aluminum frame. (See color charts on page 16 for cork and fabric color options.) Angle clip hangers furnished. Adhesive recommended.



800 Series Tackboard - Claridge Cork

Number	Size (HxW)	Weight	Price
837CC	18" x 24"	4 lbs.	\$184
844CC	4' x 4'	20 lbs.	\$488
852CC	4' x 6'	30 lbs.	\$690
858CC	4' x 8'	40 lbs.	\$907
862CC	4' x 10'	50 lbs.	\$1,047
864CC	4' x 12'	60 lbs.	\$1,216
866CC	4' x 16'	80 lbs.	\$1,657

800 Series Tackboard - Guilford of Maine FR701 Fabric

Number	Size (HxW)	Weight	Price
837D	18" x 24"	4 lbs.	\$149
839D	2' x 3'	8 lbs.	\$181
840D	3' x 4'	15 lbs.	\$253
844D	4' x 4'	20 lbs.	\$297
852D	4' x 6'	30 lbs.	\$413
858D	4' x 8'	40 lbs.	\$517
862D	4' x 10'	50 lbs.	\$662
864D	4' x 12'	60 lbs.	\$741
866D	4' x 16'	80 lbs.	\$1,305

800 Series Tackboard - Fabricork

Number	Size (HxW)	Weight	Price
837F	18" x 24"	4 lbs.	\$137
839F	2' x 3'	8 lbs.	\$163
840F	3' x 4'	15 lbs.	\$219
844F	4' x 4'	20 lbs.	\$254
852F	4' x 6'	30 lbs.	\$338
858F	4' x 8'	40 lbs.	\$432
862F	4' x 10'	50 lbs.	\$566
864F	4' x 12'	60 lbs.	\$624
866F	4' x 16'	80 lbs.	\$1,105

800 Series Tackboards - 5/8" Face Trim - Tan Nucork

Number	Size (HxW)	Weight	Price
837N	18" x 24"	4 lbs.	\$136
844N	4' x 4'	20 lbs.	\$264
852N	4' x 6'	30 lbs.	\$354
858N	4' x 8'	40 lbs.	\$467
862N	4' x 10'	50 lbs.	\$585
864N	4' x 12'	60 lbs.	\$644
866N	4' x 16'	80 lbs.	\$950
800 Series Powder Coat Add - up to 4' x 6'			\$102
800 Series Powder Coat Add - 4' x 8' and larger			\$134

Standard Freight

900 Series Tackboard

1-1/4" Face Trim - Smooth, resilient Tan Nucork surface remains soft and pliable indefinitely. Pins and thumbtacks can be inserted easily and are gripped firmly.



900A Series Tackboards - Aluminum Trim

Number	Size (HxW)	Weight	Price
953A	3' x 5'	19 lbs.	\$327
958A	4' x 4'	20 lbs.	\$295
959A	4' x 5'	25 lbs.	\$332
960A	4' x 6'	30 lbs.	\$362
962A	4' x 8'	38 lbs.	\$520
963A	4' x 10'	40 lbs.	\$696
964A	4' x 12'	60 lbs.	\$763

Imperial Series Bulletin Board Cabinet

Cabinets are constructed of heavy-gauge satin anodize aluminum and are available with or without a header panel. Two sliding glass doors; tackable back panels in Claridge Cork, Fabricork, or Guilford of Maine FR701 Fabric. See page 16 for color options. Cabinets have a 1-1/2" inside depth.



Bulletin Board Cabinet

Number	Size (HxW)	Weight	Price
294	36" x 48"	80 lbs.	\$2,265
295	36" x 60"	100 lbs.	\$2,624
296	36" x 72"	120 lbs.	\$2,807
297	48" x 60"	135 lbs.	\$2,791
298	48" x 72"	160 lbs.	\$3,023

Options

Medium or Dark Bronze Anodize - specify BA	Add	\$1,441
Powder coat finish - specify Imperial PC	Add	\$289
Add Lights - specify Imperial Light	Add	\$695

Standard Freight

Universal Bulletin Cabinet

Cabinets have tackable back panels in Claridge Cork, Fabricork or Guilford of Maine FR701 Fabric. See page 16 for color options. Cabinets have three hinged glass doors. Inside depth is 1-15/16".



Universal Combination Cabinet

Number	Size (HxW)	Weight	Price
1846	36" x 72"	159 lbs.	\$3,243
1847	48" x 72"	177 lbs.	\$3,513

Options

Medium or Dark Bronze Anodize - specify BA	Add	\$1,441
Powder coat finish - specify Imperial PC	Add	\$427
Add Lights - specify Imperial Light	Add per door	\$390

Standard Freight

Large Contemporary Bulletin Board Cabinet

Heavy gauge satin anodize aluminum housing. Hinged tempered glass door(s). Tackable back panels can be Claridge Cork, Fabricork or Guilford of Maine FR701 Fabric. See page 16 for color options. 3" cabinets have 1-3/4" inside depth; 4" cabinets have 2-3/4" inside depth.



Large Contemporary Bulletin Board Cabinet

Number	Size (HxW)	Weight	Price
3" Housing - 1 Door			
2153-3	5' x 3'	180 lbs.	\$3,098
2164-3	6' x 4'	2507 lbs.	\$3,604
3" Housing - 2 Doors			
2156-3	5' x 6'	300 lbs.	\$5,540
2168-3	6' x 8'	500 lbs.	\$6,714
4" Housing - 1 Door			
2153-4	5' x 3'	180 lbs.	\$4,312
2164-4	6' x 4'	250 lbs.	\$4,998
4" Housing - 2 Doors			
2156-4	5' x 6'	300 lbs.	\$6,158
2168-4	6' x 8'	500 lbs.	\$7,493
Options			
Medium or Dark Bronze Anodize -			
specify Large Contemporary BA	Add	\$1,921	
Powder coat finish - specify Large Contemporary PC	Add	\$835	
Add Lights - specify Imperial Light	Add per door	\$364	

Standard Freight

Deluxe Bulletin Board Cabinet



Cabinet has satin anodize aluminum frame, Tan Nucork Back panel, hinged glass door(s). Inside cabinet depth is 3/4".

Deluxe Bulletin Board Cabinet

Number	Size (HxW)	Weight	Price
2 Door			
1941	36" x 48"	66 lbs.	\$1,958
Options			
Medium or Dark Bronze Anodize - specify Deluxe BA	Add	\$1,441	
Powder coat finish - specify Deluxe PC	Add	\$251	

Standard Freight

Connect X2 Series Full Height Mobile Display



Connect X2 Series Double-Sided Mobile markerboards are available in your choice of Claridge LCS Porcelain enamel steel or Magnetic Glass writing surface in five widths - 30", 36", 42", 48" and 60". Unit is approx. 72" tall; full height markerboard. 2 locking and 2 non-locking casters for easy mobility. Ganging option available.

Full Height Claridge LCS Porcelain Markerboard - Both Sides

Number	Size (HxW)	Weight	Price
X2-MM-7230-MB-MB	72" x 30"	110 lbs.	\$2,360
X2-MM-7236-MB-MB	72" x 36"	128 lbs.	\$2,380
X2-MM-7242-MB-MB	72" x 42"	147 lbs.	\$2,400
X2-MM-7248-MB-MB	72" x 48"	165 lbs.	\$2,400
X2-MM-7260-MB-MB	72" x 60"	200 lbs.	\$3,090

Full Height Claridge Glass Markerboard - Both Sides

Number	Size (HxW)	Weight	Price
X2-MM-7230-MG-MG	72" x 30"	140 lbs.	\$3,806
X2-MM-7236-MG-MG	72" x 36"	160 lbs.	\$3,929
X2-MM-7242-MG-MG	72" x 42"	205 lbs.	\$4,372
X2-MM-7248-MG-MG	72" x 48"	230 lbs.	\$5,831
X2-MM-7260-MG-MG	72" x 60"	290 lbs.	\$6,831

Standard Freight

Connect X2 Series Partial Height Mobile Display



Double-sided display boards available in Claridge LCS Porcelain writing surface in two widths - 36" and 48". Unit is approx. 72" tall, markerboard is 36" high. Furnished with locking and non-locking casters for mobility or stationary.

Partial Height Claridge LCS Porcelain Markerboard - Both Sides

Number	Size (HxW)	Weight	Price
X2-MMN-7236-MB-MB	72" x 36"	80 lbs.	\$1,760
X2-MMN-7248-MB-MB	72" x 48"	95 lbs.	\$1,810

Standard Freight

Switch Mobile



Switch double-sided mobiles are available in your choice of Claridge LCS Porcelain enamel steel or Magnetic Glass writing surfaces with an integrated marker tray along the bottom edge of the board. 60" or 72" height and widths in 36", 42", 48", and 60". Comes with 2 locking and 2 non-locking Hubless Casters for easy mobility. See standard matte color options on page 15.

Claridge LCS Porcelain

Number	Size (HxW)	Weight	Price
SW-6036-MB-MB	60" x 36"	86 lbs.	\$2,540
SW-6042-MB-MB	60" x 42"	95 lbs.	\$2,640
SW-6048-MB-MB	60" x 48"	103 lbs.	\$2,650
SW-6060-MB-MB	60" x 60"	109 lbs.	\$2,870
SW-7236-MB-MB	72" x 36"	92 lbs.	\$2,760
SW-7242-MB-MB	72" x 42"	102 lbs.	\$2,780
SW-7248-MB-MB	72" x 48"	111 lbs.	\$2,800
SW-7260-MB-MB	72" x 60"	119 lbs.	\$2,990

Claridge Glass

Number	Size (HxW)	Weight	Price
SW-6036-MG-MG	60" x 36"	105 lbs.	\$3,690
SW-6042-MG-MG	60" x 42"	122 lbs.	\$3,950
SW-6048-MG-MG	60" x 48"	133 lbs.	\$4,130
SW-6060-MG-MG	60" x 60"	147 lbs.	\$4,670
SW-7236-MG-MG	72" x 36"	122 lbs.	\$4,220
SW-7242-MG-MG	72" x 42"	137 lbs.	\$4,460
SW-7248-MG-MG	72" x 48"	151 lbs.	\$4,670
SW-7260-MG-MG	72" x 60"	169 lbs.	\$5,260

Standard Freight

Connect X2 Series Double Sided Markerboard/Tackboard Mobile



Available with Claridge LCS Porcelain on top and Claridge Cork on bottom (specify cork color - see page 18). Specify height for markerboard and tack surface. Available in two widths - 36" and 48". Unit is 72" tall. Locking and non-locking casters.

Claridge LCS Porcelain Markerboard / Claridge Cork Tackboard

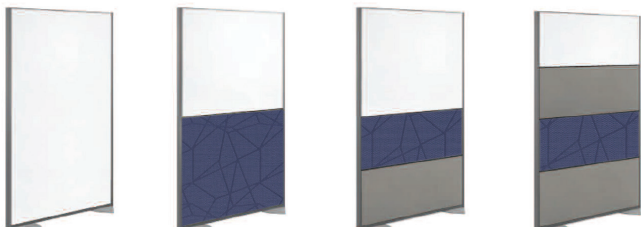
Number	Size (HxW)	Weight	Price
X2-MMNT-7236-MB-MB	72" x 36"	116 lbs.	\$2,130
X2-MMNT-7248-MB-MB	72" x 48"	130 lbs.	\$2,160

Standard Freight

Connect Space Creator

Connect Space Divider panels are furnished with two pie-shaped feet and a link for joining two or more Space Creators. Claridge LCS Porcelain enamel steel writing surface or fabric surfaces (specify cork color - see page 16). All Space Creators are 72" high and come in 30", 36", 48" and 60" widths.

NOTE: Powder coat trim color option additional \$158.



Space Creator - Claridge LCS Porcelain - Both Sides

No. of Tiles	Number	Weight	Price
72" high x 30" wide			
1-tile	X2-SC-7230-1-MB-MB	117 lbs.	\$2,139
2-tiles	X2-SC-7230-2-MB-MB	117 lbs.	\$2,213
3-tiles	X2-SC-7230-3-MB-MB	117 lbs.	\$2,293
4-tiles	X2-SC-7230-4-MB-MB	117 lbs.	\$2,409
72" high x 36" wide			
1-tile	X2-SC-7236-1-MB-MB	135 lbs.	\$2,150
2-tiles	X2-SC-7236-2-MB-MB	135 lbs.	\$2,230
3-tiles	X2-SC-7236-3-MB-MB	135 lbs.	\$2,288
4-tiles	X2-SC-7236-4-MB-MB	135 lbs.	\$2,410
72" high x 48" wide			
1-tile	X2-SC-7248-1-MB-MB	171 lbs.	\$2,178
2-tiles	X2-SC-7248-2-MB-MB	171 lbs.	\$2,299
3-tiles	X2-SC-7248-3-MB-MB	171 lbs.	\$2,685
4-tiles	X2-SC-7248-4-MB-MB	171 lbs.	\$2,739

Space Creator - Fabric Tackboards - Both Sides

Tiles	Number	Weight	Guilford	Carnegie	Maharam
72" high x 30" wide					
1-tile	X2-SC-7230-1-	87 lbs.	\$2,153	\$2,795	\$2,492
2-tiles	X2-SC-7230-2-	87 lbs.	\$2,234	\$2,876	\$2,573
3-tiles	X2-SC-7230-3-	87 lbs.	\$2,314	\$2,956	\$2,653
4-tiles	X2-SC-7230-4-	87 lbs.	\$2,430	\$3,072	\$2,769
72" high x 36" wide					
1-tile	X2-SC-7236-1-	99 lbs.	\$2,171	\$2,813	\$2,510
2-tiles	X2-SC-7236-2-	99 lbs.	\$2,251	\$2,893	\$2,590
3-tiles	X2-SC-7236-3-	99 lbs.	\$2,223	\$2,956	\$2,562
4-tiles	X2-SC-7236-4-	99 lbs.	\$2,430	\$3,072	\$2,769
72" high x 48" wide					
1-tile	X2-SC-7248-1-	123 lbs.	\$2,180	\$2,822	\$2,519
2-tiles	X2-SC-7248-2-	123 lbs.	\$2,290	\$2,932	\$2,629
3-tiles	X2-SC-7248-3-	123 lbs.	\$2,387	\$3,029	\$2,726
4-tiles	X2-SC-7248-4-	123 lbs.	\$2,767	\$3,623	\$3,219

Standard Freight

For Guilford fabrics, specify -FG-FG

Carnegie - FC-FC; Maharam -FM-FM. Specify color requested.

Sliding Glass Wall System

Horizontal Sliding Units are custom-built to meet your needs. The sliding panels are top-suspended and glide easily over aluminum track on molded nylon rollers. Claridge Glass doubles as a magnetic surface with metal backing. Claridge Glass is an ultra clear writing surface that won't ghost or stain. The sliding wall system covers an entire wall, floor-to-ceiling, up to 8' high.

Call for custom pricing.



Sliding Porcelain Wall System

Horizontal Sliding Units are custom-built to meet your needs. The sliding panels are top-suspended and glide easily over aluminum track on molded nylon rollers. Claridge LCS Porcelain accepts magnetic accessories. The sliding wall system covers an entire wall, floor-to-ceiling, up to 8' high and resists humidity and fading. Claridge LCS Porcelain surfaces have lifetime warranty.

Call for custom pricing.



748 Universal Series Display Case

Extruded aluminum frame has 302P Black Powder Coat finish. 3/16" tempered glass back panel, end panels and sliding doors with lock. Three adjustable shelves. Black laminate base is 18" high and features storage space. Inside case depth is 15-3/4".



Universal Series Display Case

Number	Size (HxW)	Weight	Price
Low Pressure Laminate - Light			
748	78" x 48" x 18"	400 lbs.	\$9,710

Standard Freight

NEW Slim Marker Caddy

Lightweight aluminum with rare earth magnet backing measures 1-3/8" H, 9" W, and 1-3/8" D. Holds 4 markers and one microfiber cloth or standard eraser. Available in satin anodized finish or 24 standard aluminum trim colors.

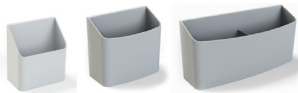


M-MC2	.5 lb.	\$102
M-MC2P	.5 lb.	\$99

Standard Freight

Marker Caddy

Sculpted plastic magnetic holder with rare earth magnets measures 3-1/2" H, 3-1/8" W, and 1-3/4" D. Holds up to 8 markers or two markers and one microfiber cloth or standard eraser.



MGM-MC1-S	3-1/2"h, 3-1/8"w, 1-3/4"d	\$36
MGM-MC1-M	4"h, 4-1/2"w, 2-1/5"d	\$39
MGM-MC1-L	4"h, 8-1/2"w, 2-2/5"d	\$45

Standard Freight

Dry-Erase Markers

Four broad-tipped markers. One each: Red, Blue, Green and Black.



LCS673-4	1 lb.	\$14
----------	-------	------

Standard Freight

Dry-Erase Cloth

12" x 12" Microfiber eraser cloth. Erases cleanly with no smearing. Designed to reduce marker residue build-up.



ECM227E	1 cloth	.5 lb.	\$9
ECM227D	1 dozen cloths	2 lbs.	\$83

Standard Freight

Dry-Erase Kit

Four dry-erase markers and one Microfiber cloth.

LCS668-4	.5 lb.	\$22
----------	--------	------

Standard Freight

Markerboard Cleaner

Cleans and restores Claridge LCS Porcelain enamel steel markerboard surfaces. 8 oz. pump spray.



LCS683	1 lb.	\$12
--------	-------	------

Standard Freight

Partition Panel Clip

Spring steel clips fit over the top of any 2" thick partitions. Small prongs fit underneath the board trim. Two each.



80	2"	.5 lb.	\$30
80-3	3"	.5 lb.	\$65

Standard Freight

NEW Rare Earth Magnets

Claridge rare earth magnets, designed specifically for use on magnetic glass boards are 1.29" square and .44" thick. Colors available in black, white and gray.

MGM-REMSQ-B, -W, -G	1 oz.	\$22
---------------------	-------	------

Standard Freight

Magnetic Eraser

The black felt eraser surface cleans your board with ease. Strong rare earth magnets hold it on the board. 4-1/2" long, 2-1/8" wide and 7/8" thick.

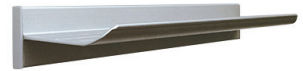


MGM-ME1	.5 lb.	\$30
---------	--------	------

Standard Freight

Magnetic Tray

Strong rare earth magnets hold this satin anodize aluminum tray in place, yet allow the flexibility to re-position when needed. Fabric-backed tray has eased corners and measures 12" long, 1-1/2" high, 3" deep and will easily hold markers and eraser.

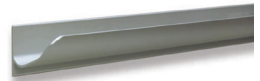


MGM-T1	12" length	1 lb.	\$176
--------	------------	-------	-------

Standard Freight

Magnetic Aluminum Tray

For use on porcelain markerboards. 267M1 for use on porcelain surface; 267MG1 for use on glass surface.

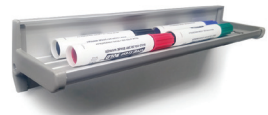


267M1	12" length	.5 lb.	\$45.75
267MG1	12" length	.5 lb.	\$123
267MG1-P	12" length	.5 lb.	\$143

Standard Freight

Magnetic Aluminum Tray

Satin anodized aluminum tray. For use on porcelain markerboard.



264M1	12" length	1 lb.	\$79
-------	------------	-------	------

Standard Freight

Adhesive-Backed Tray

For a more economical and permanent accessory tray, this traditional-looking satin anodize aluminum tray stays in place with double-sided tape and holds markers and erasers in one permanent location. Tray is 12" long, 2-7/16" high, and 2-11/16" deep. (For both porcelain and glass boards.)

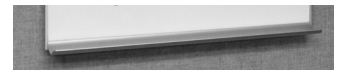


GM-Tray-1	12" length	1 lb.	\$49
-----------	------------	-------	------

Standard Freight

Fixed Marker Tray

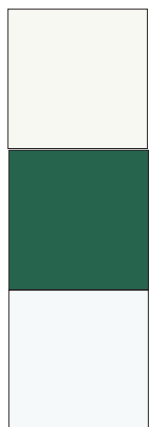
Optional fixed aluminum marker tray for X2 markerboards.



Number	Weight per Linear Ft.	Price per Linear Ft.
CP-TRAY-Add	.5 lb	\$12

Standard Freight

WRITING SURFACES



LCS (Lifetime Ceramic Surface)

- Porcelain enamel steel
- Smooth, dry-erase porcelain surface for easy writing and clean erasing
- Porcelain surface can be used for projection

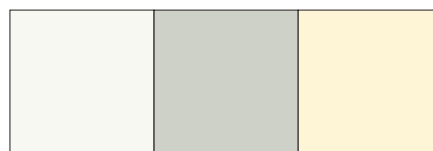
LCS Chalkboard

- Porcelain enamel steel
- Smooth surface insures unsurpassed chalking and erasing qualities

Magnetic Glass

- 1/4" tempered glass
- Silky smooth surface writes easily, erases cleanly
- Virtually maintenance free

LCS MARKERBOARDS COLOR OPTIONS



100 White

101 Light Gray

102 Beige

LCS CHALKBOARDS COLOR OPTIONS

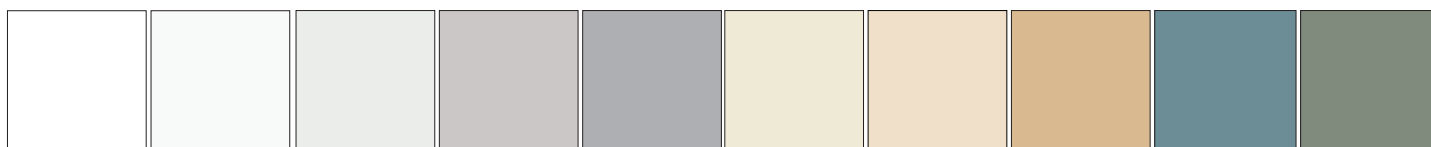


500 Green

501 Black

502 Gray

GLASS MARKERBOARDS: STANDARD COLOR OPTIONS



Brilliant White

Calm White

Signal White

Telegrey

Signal Gray

Pure White

Oyster White

Beige

Squirrel Grey

Yellow Grey

MATTE FINISH TRIM COLORS



White

Black

Gray

Silver

Slate Gray

Turquoise

Beige Red

Blue

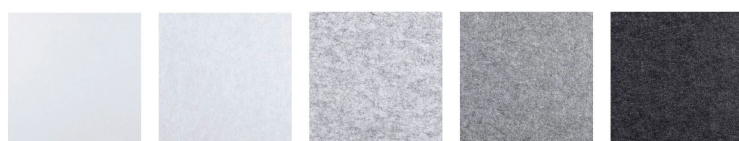
*Bronze

*Silver Gray

*Metallic matte finish

ACOUSTIC OPTIONS

Standard Colors - In Stock



Pearl

White

Marble

Steel

Graphite

Additional Colors - Available for order



Pewter

Tiger Eye

Camel

Quartz

Ocean Mist

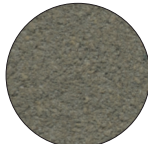
Black

Deep Sea

Cayenne

Moss

Stone

CLARIDGE CORK
COLOR OPTIONS

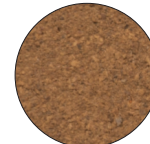
1108 Mushroom



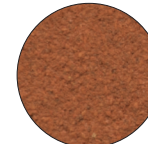
1109 Buff



1110 Fawn



1100 Tan



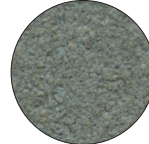
1104 Cinnamon



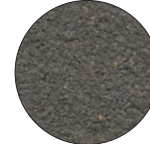
1103 Oyster



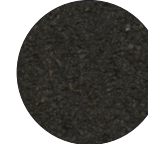
1111 Smoke



1113 Steel Gray



1136 Graphite

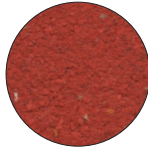


1132 Black

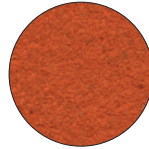
NUCORK:



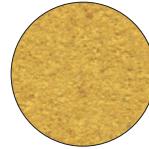
Tan



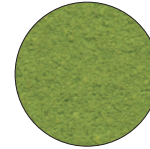
1117 Salsa



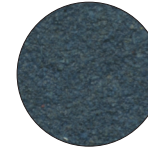
1118 Tangerine



1119 Pineapple



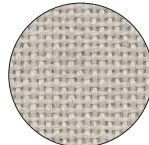
1120 Lettuce



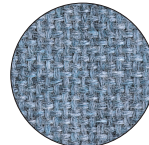
1129 Blueberry

GUILFORD OF
MAINE FR701
FABRICS
COLOR OPTIONS

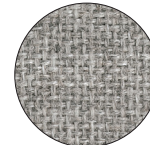
1684 Black



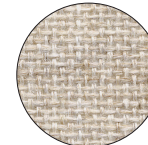
1686 Dark Pearl



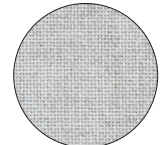
1689 Wedgewood



1690 Grey Mix



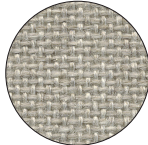
1691 Quartz



1683 Silver



1692 Wheat



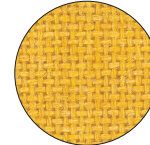
1681 Cement Mix



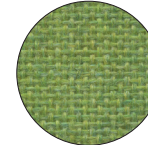
1685 Flannel



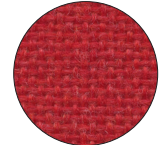
1688 Cobalt



1693 Sunshine



1680 Lime



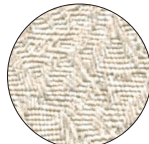
1679 Cardinal

FABRICORK
COLOR OP-
TIONS

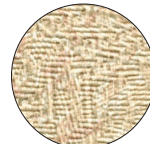
KV216 Ecru



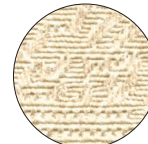
KV230 Oyster



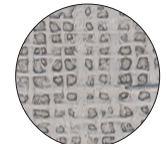
KV233 Driftwood



KV237 Curry



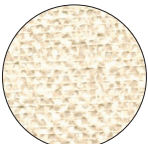
KV241 Wheat Straw



KB662 Gray



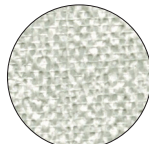
KB290 Sterling



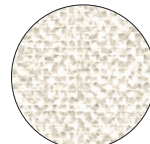
KL404 Dorset



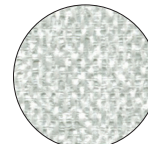
KL412 Ancestral



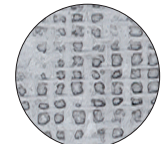
KL483 Downing Stone



KL490 Rectory



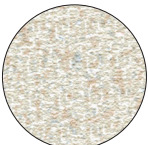
KL498 Winthrop



KB661 Dawn



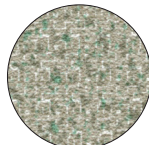
KB664 Antique



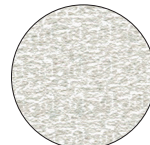
KE510 Runway



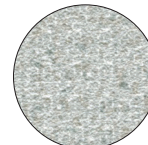
KE522 Innocent



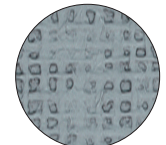
KE584 Power



KE591 Counselor



KE592 Gentleman Gray



KB278 Pacific

HOOK-FAB:



976 Black

Frame Finishes

Frames available in aluminum or wood. Aluminum frames in satin anodize or Medium or Dark Bronze color anodize, powder coat in 302P Black and 314P Bronze, standard powder coat finishes, three textured finishes and five transparent powder coat finishes. Wood frames are available in a variety of finishes.

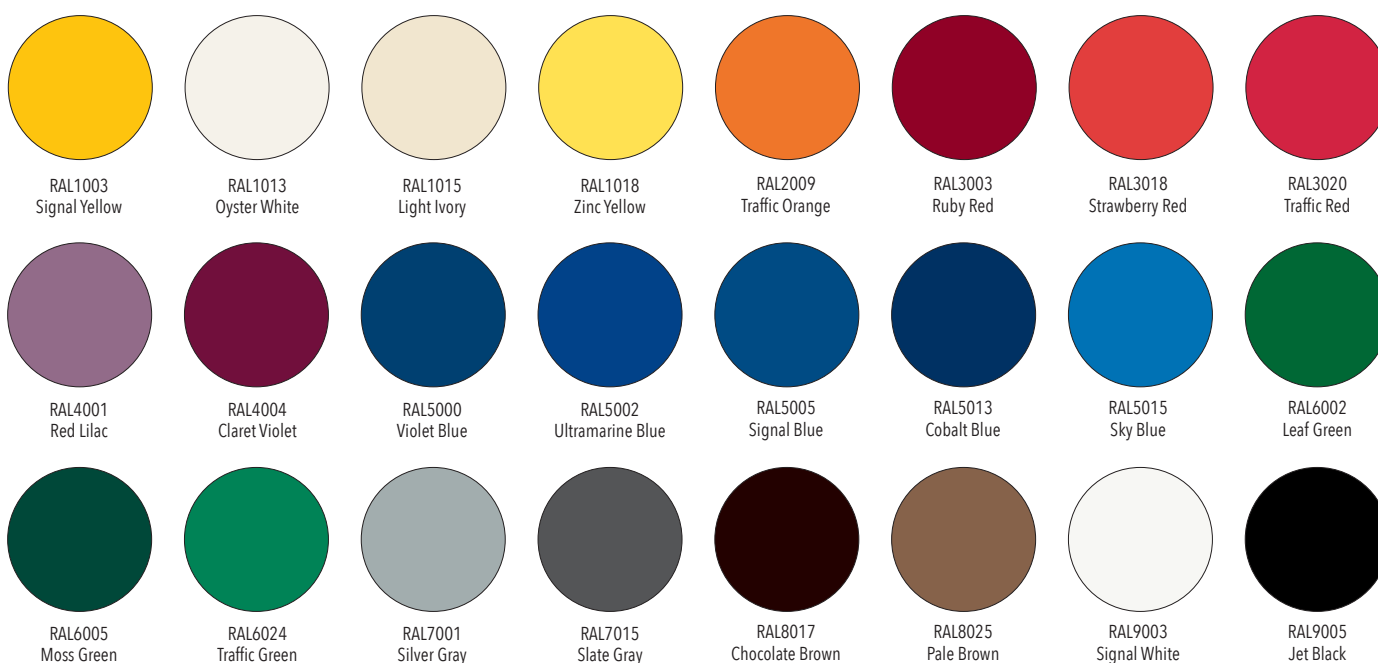
WOOD FINISHES



ALUMINUM FINISHES



POWDER COAT FINISHES FOR ALUMINUM



Colors are reproduced with reasonable accuracy. If match is critical, call or write for samples.



Talk to a Claridge writing
surface expert today to learn
how we turn workspaces into
idea places.