



Guilford of Maine® FR701®
FABRIC TACKBOARDS



1683 Silver



1686 Dark Pearl



1691 Quartz



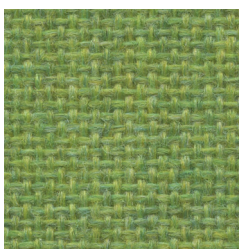
1692 Wheat



1681 Cement Mix



1690 Grey Mix



1680 Lime



1693 Sunshine



1679 Cardinal



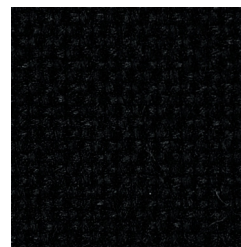
1685 Flannel



1689 Wedgewood



1688 Cobalt



1684 Noir

Please note minimal color shade variations may occur from one dye lot to another.

CLARIDGE FABRIC TACKBOARDS

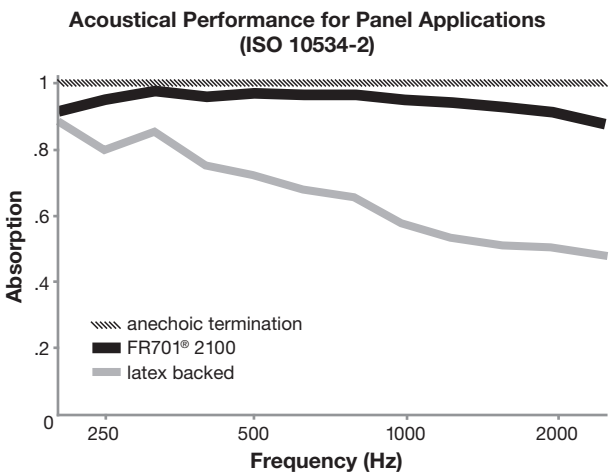
FR701® 2100

Specifications

Content	100% post-consumer recycled polyester
Weight	16.0 ± 0.5 oz./lin. yd.
Width	66" min. usable





Acoustical Performance

The plot below summarizes impedance tube measurements of absorption of an anechoic termination and various fabrics in front of the anechoic termination.



NRC of anechoic termination	1.00
NRC of fabric in front of anechoic termination	0.95

Performance

	Colorfastness to Light (AATCC 16.3 Option 3) Grade 4 min. at 40 hours
	Colorfastness to Crocking (AATCC 8) Grade 4 min. dry & Grade 3 min. wet
	Breaking Strength (ASTM D5034) 150 lbf min. warp and fill
	Flammability (ASTM E84) Class 1 or A

Cleaning Code

Clean with water based cleaning agents, foam or pure, water free solvents. Vacuuming or light brushing is recommended to prevent dust and soil buildup.

Miscellaneous

Colors may vary between dye lots. This is a non-directional fabric. Proudly woven in North America supporting our local communities.



Terratex is a registered trademark of Duvatex, Inc. and designates fabrics that are made from 100% recycled or compostable material using increasingly sustainable manufacturing practices to produce a high quality product that is recyclable at the end of its useful life.



This pattern is included in the underwriters laboratory panel fabric recognition program. Additional testing of this U.L. recognized component fabric is not required on approved panels from participating manufacturers.