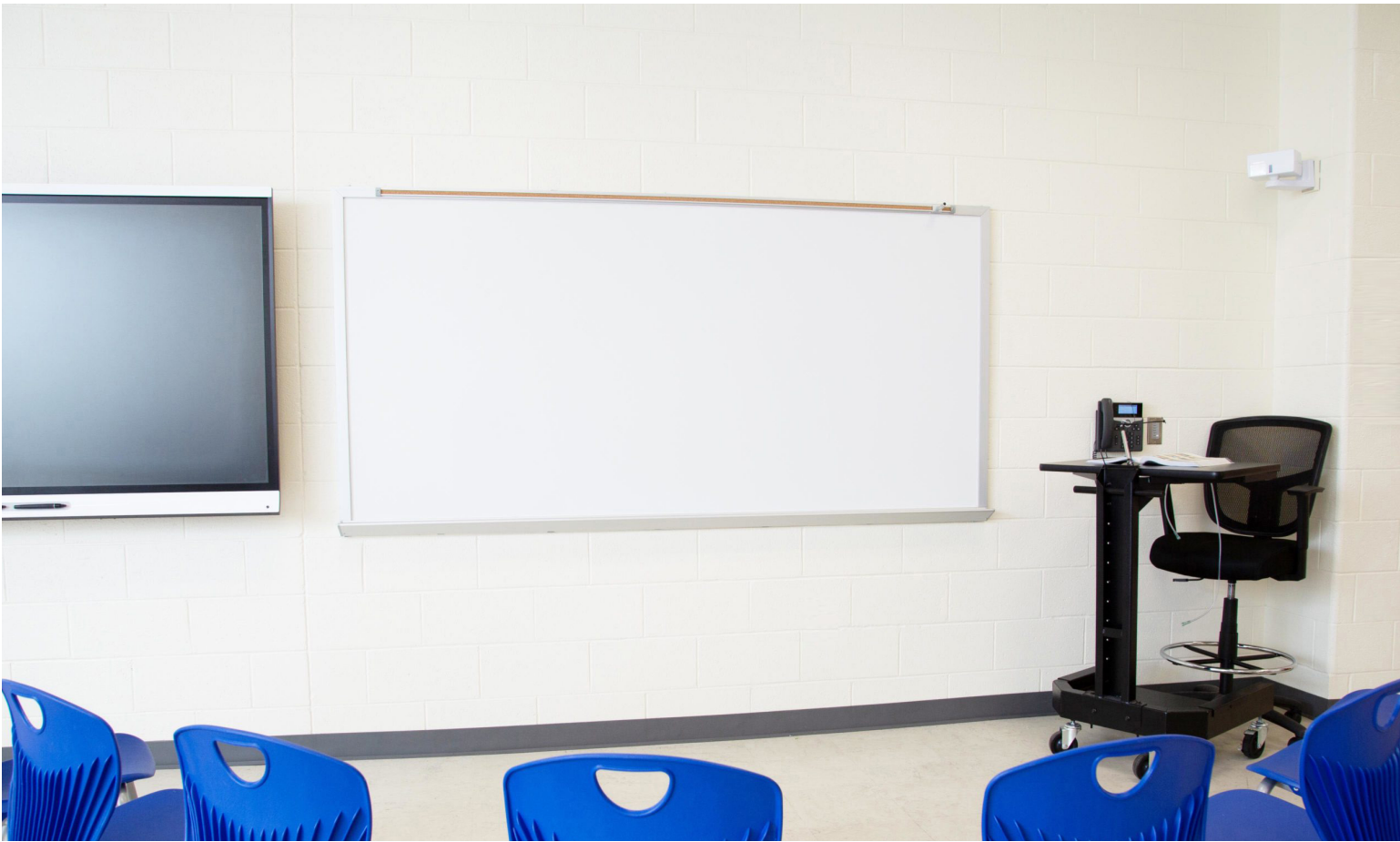


Series 1 Markerboard

Claridge®



Claridge Series Boards are found in K-12 schools across the nation as the trusted brand in education. An incredibly smooth LCS Porcelain surface delivers a great writing experience and will stand the test of time. LCS Porcelain steel accepts magnets, won't ghost or stain, and is warranted for life.

- Series 1 has a perimeter trim size of 1 1/2"
- Claridge LCS Porcelain surfaces accept magnetic accessories
- Projection friendly writing surface that won't ghost or stain
- Available in both markerboard and chalkboard options
- Satin anodize aluminum frame - can be powder coated in 24 standard colors
- Tackboard options in Claridge Cork, Fabricork, Guilford of Maine Fabric, Hook-Fab, and Tan NuCork

Samples available at:



Series 1 Markerboard



SPECIFICATIONS

- Perimeter trim is 1 1/2" wide
- Clear anodize aluminum frame
- 1" map rail and tray included
- Maximum length, 16'; maximum height, 4'
- O.A. panel thickness approx. 1/2"
- GREENGUARD certified, eco-friendly, and emits no VOC's

Options

- 2" maprail available

COLORS

- Markerboard colors in white, light gray, and beige
- Chalkboard colors in green, black, and gray

View Claridge LCS Porcelain Colors [HERE](#)

TACK MATERIAL COLORS

- Select tack materials from Claridge Cork, Fabricork, and standard fabrics from Guilford of Maine

View Tack Material Colors [HERE](#)

[Learn More](#)

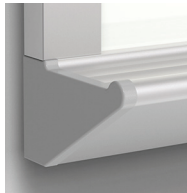
Trim Detail



Tray Options



Flat Tray



Box Tray

Standard Sizes (HxW)

	4' x 4'	4' x 5'	4' x 6'	4' x 8'	4' x 10'	4' x 12'	4' x 14'	4' x 16'
	3' x 4'							
	2' x 3'	2' x 4'						