

# Series 5

## Markerboard, Chalkboard, Tackboard

Claridge®



Claridge Series Boards are found in K-12 schools across the nation as the trusted brand in education. An incredibly smooth LCS Porcelain surface delivers a great writing experience and will stand the test of time. LCS Porcelain steel accepts magnets, won't ghost or stain, and is warrantied for life.

- Series 5 has a perimeter trim size of 5/8" and extruded Z-bar mount
- Claridge LCS Porcelain surfaces accept magnetic accessories
- Projection friendly writing surface that won't ghost or stain
- Available in both markerboard and chalkboard options
- Satin anodize aluminum frame - can be powder coated in 24 standard colors
- Tackboard options in Claridge Cork, Fabricork, Guilford of Maine Fabric, Hook-Fab, and Tan NuCork

# Series 5

## Markerboard, Chalkboard, Tackboard



### SPECIFICATIONS

- Perimeter trim is 5/8" wide and extruded Z-bar mount
- Clear anodize aluminum frame
- 1" map rail and tray included; 2" maprail option available
- Maximum length, 16'; maximum height, 4'
- O.A. panel thickness approx. 1/2"
- LCS Porcelain surface is SCS Indoor Advantage certified, eco-friendly, and emits no VOC's

### COLORS

- Markerboard colors in white, light gray, and beige
- Chalkboard colors in green, black, and gray

**View Claridge LCS Porcelain Colors [HERE](#)**

### TACK MATERIAL COLORS

- Select tack materials from Claridge Cork, Fabricork, and standard fabrics from Guilford of Maine

**View Tack Material Colors [HERE](#)**

[Learn More](#)

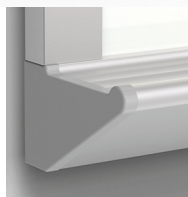
Trim Detail



Tray Options



Flat Tray



Box Tray

### Standard Sizes (HxW)

4' x 4'	4' x 5'	4' x 6'	4' x 8'	4' x 10'	4' x 12'	4' x 14'	4' x 16'
3' x 4'							
2' x 3'	2' x 4'						

### Typical Markerboard, Chalkboard & Tackboard Arrangements



Type A



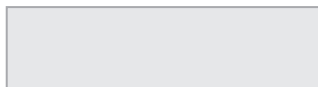
Type C



Type F



Type BR (Tackboard right), BL (TB left)



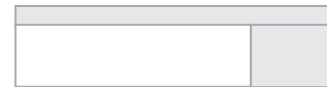
Type CO



Type D



Type H



Type ER (Tackboard right), EL (TB left)

Markerboard or Chalkboard

Tackboard, Slat Board, Peg Board, Graphic Board



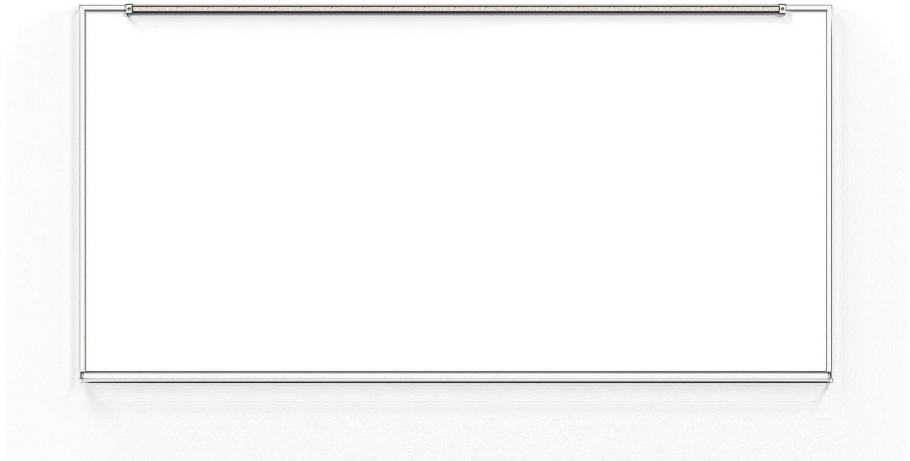
Type GR (Tackboard right), GL (TB left)



800-434-4610  
claridgeproducts.com



## Series 5 Factory Built Markerboards



### INSTALLATION INSTRUCTIONS

---

#### INSPECTION

Claridge Factory Built Units are inspected and are approved as being without damage at the time of shipment. On arrival, carefully examine each carton for damage. If damage is visible have the driver clearly note that fact on your delivery receipt and file claim immediately. Immediately after delivery, open all cartons (save cartons) and inspect for concealed damage. If damage is discovered call carrier and request inspection. Failure to report concealed damage within 5 days will result in the carrier denying the claim. Claridge will not be responsible for any damage claims if an inspection report is not secured and a claim not filed within the time limit.

PLEASE FOLLOW INSTRUCTIONS CAREFULLY TO BE ASSURED OF A GOOD INSTALLATION.

#### STORING INSTRUCTIONS (Pre-Installation)

Prefabricated markerboards, chalkboards, and tackboards have wood fiber cores or backing materials, and will, under certain climate conditions, show slight dimensional changes. The following instructions must be followed to guarantee they will remain flat and true.

1. After opening and inspecting boards for damage, return to original crates or cartons for storage and do not uncrate until boards are to be erected. Uncrated, they must not be allowed to lean at an angle against the wall or other objects and must not lay on the floor for any length of time. Boards should be stored in as close to a vertical position as possible.
2. Do not erect boards on damp walls or in damp and humid weather without heat in the building.
3. Clean off all fingerprints, dirt, etc. at once.
4. Follow pre-use instructions for optimal board performance.

#### WARNING

Risk of injury to installers and users  
Read the entire assembly directions before beginning assembly.

# Series 5 Installation Instructions

---

## STEP-BY-STEP INSTRUCTIONS FOR INSTALLING HANGERS

For permanent installations, we recommend using a combination of hangers and adhesive.

**Note:** Sections of concealed hanger to be anchored to wall are punched with 3/16" holes and are to be mounted not more than 24" o.c. Angle hangers for bottom of board are punched with slotted holes for wall, and non-slotted hole for bottom of board, and are mounted not more than 24" o.c. (Continuous hangers for bottom are punched 12" o.c.)

1. Chalk lines on wall for placing hangers at same vertical distances as required for height of board.
2. Mount hangers to wall with required type wall fastener. Wall fasteners not furnished.
3. Using straight edge, shim where necessary so that all anchor points of hanger are in line and level. Anchor securely to wall.
4. Attach bottom mounting angle clip with required wall fasteners to wall at architect's specified accessory tray height. Caution should be exercised to assure that the angle is level.
5. Apply adhesive (16A or similar wallboard or construction adhesive) to back of board according to manufacturer's printed instructions, or by staggering egg-size globs of adhesive approximately 12" o.c. Adhesive should not be closer than 6" to edge of board. Caution should be exercised not to use adhesive too sparingly or to allow adhesive to remain on back of board more than 10 minutes before hanging.
6. Lift board into position on wall so that board hangers are slightly above wall hangers. Holding board firmly against wall, lower until board hangers engage with wall hangers.
7. Using a wood block, tap bottom mounting angle up securely against tray and install 3/8" screws as provided.
8. Be certain entire board is shored up for 48 to 72 hours until adhesive dries.

**Important Note:** For installations over 16'0" long joined with H-bars, and for combination units, check the back of the boards for run numbers. These boards have been matched at the factory, and assembly will match only if the proper run numbers are put in sequence.



800-434-4610  
claridgeproducts.com



### Standard Color Selections

Select from the 3 standard porcelain or 3 chalkboard colors

#### LCS Porcelain Colors - use with markers



No. 100 White

No. 101 Light Gray

No. 102 Beige

#### Chalkboard Colors - use with chalk



No. 500 Green

No. 501 Black

No. 502 Gray

Claridge LCS Porcelain enamel steel markerboard and chalkboard writing surfaces offer unsurpassed durability and performance – a lifetime of performance.

An environmentally friendly process that offers a wide range of decorative and functional colors for use on porcelain markerboards and walls.

- Smooth writing and clean erasing
- Unmatched scratch and stain resistance
- 100% non-combustible surface
- Magnetic surface
- Projection-friendly low gloss LCS surface
- Life of the Building Guarantee
- LCS Porcelain surface is SCS Indoor Advantage Certified

*Colors are reproduced with reasonable accuracy, and are for color identification purposes only.  
If color is critical, contact us at 800-434-4610 to request an actual color sample.*



## LCS PORCELAIN Markerboard and Chalkboard Features

### ENVIRONMENTAL FEATURES

- **SCS Indoor Advantage Certified**

SCS Indoor Advantage certifications are product certification programs for low emitting interior building materials, furnishings and finish systems. SCS Indoor Advantage certified products undergo rigorous testing and must meet stringent standards for low chemical emissions based on established health standards for use in environments such as schools and healthcare facilities.

- **Cradle-to-Cradle™ Bronze Certification**

Cradle-to-Cradle Certification focuses on the characteristics of sustainable materials, products, and systems. The process places emphasis on the human and ecological health impacts of a product's ingredients, and on the ability of that product to be recycled or composted.

Third-party environmental certification assures customers and end users that products selected support healthy indoor air quality and do not emit harmful chemicals. LCS is non-combustible, gives off no toxic gases and is 99.9% recyclable.

### CLEANING INSTRUCTIONS

Claridge LCS Porcelain® enamel steel surfaces are guaranteed to withstand the rigors of everyday use. Proper use and maintenance will ensure performance and keep LCS Porcelain markerboards and chalkboards looking like new. Visit [claridgeproducts.com](http://claridgeproducts.com) for complete cleaning and maintenance instructions.

### WRITING SURFACE WARRANTY

Claridge LCS Porcelain enamel steel markerboard and chalkboard writing surfaces offer unsurpassed durability and performance – a lifetime of performance. We are so confident in the quality and dependability of our LCS Porcelain surfaces that we Guarantee it for the Life of the Building!

### SPECIFICATION

Claridge markerboard and chalkboard surfaces are manufactured in accordance with PEI-1002 Manual and Performance Specifications for LCS Porcelain Enamel Writing Surfaces. The writing surface is made from steel covered on both sides with enamel coatings. Fusion bonded to the steel, the resulting LCS Porcelain surface is smooth, durable and abrasion-resistant providing the best dry-erase surface available.



CLARIDGE CORK  
Color Guide



NO. 1108 MUSHROOM



NO. 1103 OYSTER



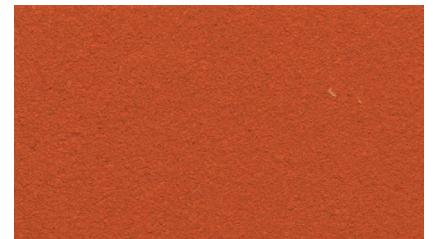
NO. 1117 SALSA



NO. 1109 BUFF



NO. 1111 SMOKE



NO. 1118 TANGERINE



NO. 1110 FAWN



NO. 1113 STEEL GRAY



NO. 1119 PINEAPPLE



NO. 1100 TAN



NO. 1136 GRAPHITE



NO. 1120 LETTUCE



NO. 1104 CINNAMON



NO. 1132 BLACK



NO. 1129 BLUEBERRY

Note: Color may vary slightly from samples.



## PRODUCT DESCRIPTION

Claridge Cork is made from pure, natural ingredients including linseed oil, pine resin, cork and pigments that are calendared onto a jute backing to create a smooth, suede-like surface of unsurpassed beauty and exceptional durability.

## FEATURES

- Environmentally friendly
- Tacks insert easily, are gripped firmly
- Does not crack, peel or crumble
- Washable stain-resistant finish
- Expanded color range - 15 harmonizing colors
- Dimensionally stable
- Meets ASTM E-84, NFPA 258 (fuel contribution) - Class B, and NFPA 255 (critical radiant flux) - Class II
- No toxins - no harmful by-products or emissions
- Low light reflectance
- Naturally inhibits bacterial growth

*Note: Features referenced above reflect characteristics of the cork surface only.*





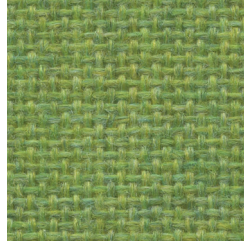
1683 Silver



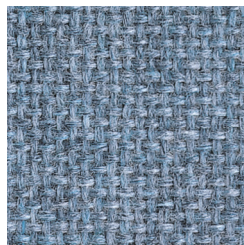
1690 Grey Mix



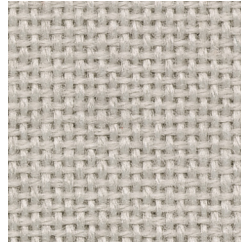
1685 Flannel



1680 Lime



1689 Wedgewood



1686 Dark Pearl



1692 Wheat



1693 Sunshine



1688 Cobalt



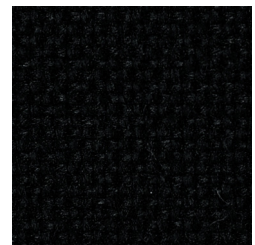
1691 Quartz



1681 Cement Mix



1679 Cardinal



1684 Noir

*Please note minimal color shade variations may occur from one dye lot to another.*

# TACKBOARD FABRICS

FR701® 2100

## Specifications

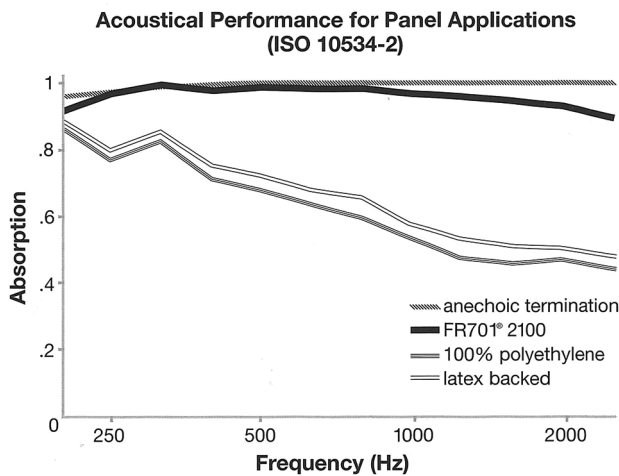
Content 100% post-consumer recycled polyester

Weight 16.0 ± 0.5 oz./lin. yd.

Width 66" min. usable

## Acoustical Performance

The plot below summarizes impedance tube measurements of absorption of an anechoic termination and various fabrics in front of the anechoic termination.



NRC of anechoic termination - 1.00

NRC of fabric in front of anechoic termination - .95

## Performance



Colorfastness to Light (AATCC 16.3 Option 3)  
Grade 4 min. at 40 hours



Colorfastness to Crocking (AATCC 8)  
Grade 4 min. dry & Grade 3 min. wet



Breaking Strength (ASTM D5034)  
150 lbf min. warp and fill



Flammability (ASTM E84)  
Class 1 or A

## Cleaning Code

Clean with water based cleaning agents, foam or pure, water free solvents. Vacuuming or light brushing is recommended to prevent dust and soil buildup.

## Miscellaneous

Colors may vary between dye lots. This is non-directional fabric. Proudly woven in the USA supporting our local communities.



TerraTex is a registered trademark of Truex Textiles, Inc. and designates fabrics that are made from 100% recycled or compostable material using increasingly sustainable manufacturing practices to produce a high quality product that is recyclable at the end of its useful life.



CO<sub>2</sub> emissions from 100% of the electricity used by the manufacturer to produce this product have been measured and offset in accordance with The CarbonNeutral Protocol.



This pattern is included in the underwriters laboratory panel fabric recognition program. Additional testing of this U.L. recognized component fabric is not required on approved panels from participating manufacturers.



800.434.4610  
claridgeproducts.com





**FABRICORK**  
Color Options



KE584 POWER

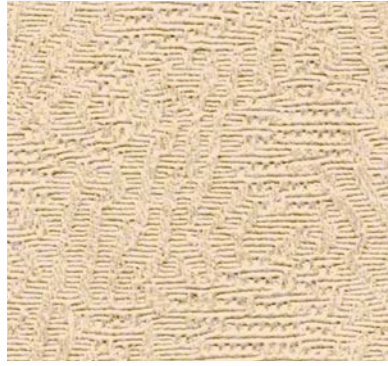
Claridge Fabricork Vinyl Bulletin Board is made of vinyl coated fabric that will wear almost indefinitely and stay new-looking for years. Fabricork is entirely washable. Spots and soil wash away with household soap and water.

Featuring Koroseal® Wallcovering  
Manufactured by Koroseal Interior Products LLC

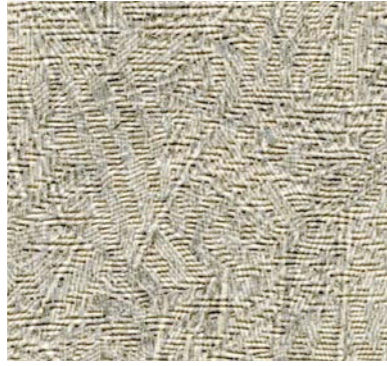
*Please note minimal color variation may occur with each dye lot.*



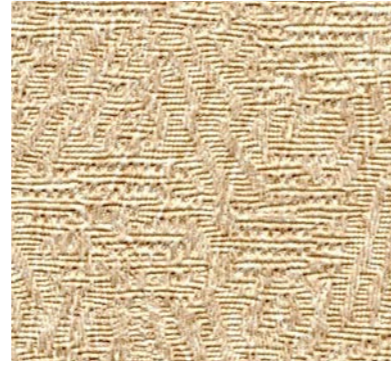
**Viewpoint Pattern**



KV216 ECRU



KV230 OYSTER



KV241 WHEAT STRAW



KV237 CURRY



KV233 DRIFTWOOD

**Esquire Pattern**



KE522 INNOCENT



KE592 GENTLEMAN GREY



KE510 RUNWAY



KE584 POWER



KE591 COUNSELOR

**Linden Pattern**



KL490 RECTORY



KL498 WINTHROPE



KL404 DORSET



KL483 DOWNING STONE



KL412 ANCESTRAL

**Belair Pattern**



KB290 STERLING



KB278 PACIFIC



KB661 DAWN



KB662 GREY



KB664 ANTIQUE



**FEATURES**

- Meets or exceeds Type 1 requirements in Federal Specification CCC-W-408A
- Manufactured with water based inks and coatings
- Has a water based acrylic top coat for improved cleanability
- Cadmium and Mercury Free
- Meets CA 01350 requirements
- Contains Early Warning Effect<sup>®</sup> Life Safety and Property Protection
- Can be supplied Micro-vented to reduce potential for mold and mildew growth

**PATTERNS**

- Viewpoint
- Esquire
- Linden
- Belair

**PROPERTIES**

Total Weight	Viewpoint, Esquire and Linden - 21 oz/linear yd. Belair - 15 oz/linear yd.
Average Thickness	0.017 to 0.021 in.
Tensile (typical)	Viewpoint, Esquire and Linden - 50 x 55 lbf minimum Belair - 30 x 30 lbf minimum
Tear (typical)	Viewpoint, Esquire and Linden - 25 x 25 minimum Belair - 12 x 12 minimum
ASTM E84 Test Results	<b>Class A</b>
Flame Spread	25 or less
Smoke Developed	50 or less

---

Koroseal Interior Products LLC  
Koroseal<sup>®</sup> Wallcovering • [www.koroseal.com](http://www.koroseal.com)

Koroseal<sup>®</sup> and Early Warning Effectare<sup>®</sup>  
trademarks and registered trademarks of  
Koroseal Interior Products LLC.



## TAN NUCORK BULLETIN BOARD SAMPLE



TAN NUCORK is a premium grade, fine grain natural tan composition cork. Nucork is dimensionally stable and has uniform density and particle size.

- An economical tackboard surface, Tan Nucork is pure grain natural cork without burlap backing
- Nucork has a smooth, resilient surface ideal for use with pins or thumbtacks
- 150 FR Nucork has a Class B fire rating based on ASTM E84 tunnel test as follows: flame spread – 65; smoke developed – 70. Meets military specification MIL-C-15116, Type II



800.434.4610  
claridgeproducts.com



# POWDER COATINGS

## Color Guide



An environmentally friendly process that offers a wide range of decorative, functional colors for use on glass markerboards, walls, and metal frames.

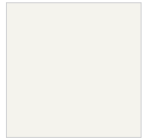
### **BENEFITS OF POWDER COATING**

- More durable than baked enamels
- Delivers a brighter, smoother and cleaner finish
- Environmentally friendly, produces less hazardous waste than conventional liquid coatings
- Color choices are virtually unlimited with custom color matching

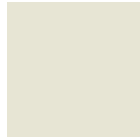
*Colors are reproduced with reasonable accuracy in standard Gloss finish unless noted Matte.  
If match is critical, contact us at 800-434-4610 for actual samples*



# Powder Coat Colors



RAL9016  
Traffic White



RAL9002  
Grey White



RAL9018  
Papyrus White



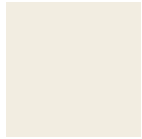
RAL7038  
Agate Grey



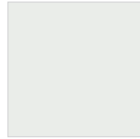
RAL7035  
Light Grey



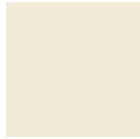
RAL7044  
Silk Grey



RAL9010  
Pure White



RAL9003  
Signal White



RAL9001  
Cream



RAL7047  
Telegrey 4



RAL7036  
Platinum Grey



RAL7045  
Telegrey 1



RAL7032  
Pebble Grey



RAL7033  
Cement Grey



RAL7042  
Traffic Grey A



RAL7004  
Signal Grey



RAL7046  
Telegrey 2



RAL7037  
Dusty Grey



RAL7030  
Stone Grey



RAL7034  
Yellow Grey



RAL7005  
Mouse Grey



RAL7040  
Window Grey



RAL7012  
Basalt Grey



RAL7043  
Traffic Grey B



RAL7003  
Moss Grey



RAL7013  
Brown Grey



RAL7039  
Quartz Grey



RAL7006  
Beige Grey



RAL7000  
Squirrel Grey



RAL7009  
Green Grey



RAL7001  
Silver Grey



RAL7010  
Tarpaulin Grey



RAL7023  
Concrete Grey



RAL7002  
Olive Grey



RAL7022  
Umbra Grey



RAL7011  
Iron Grey



RAL6006  
Grey Olive



RAL7008  
Khaki Grey



RAL7016  
Anthracite Grey



RAL7026  
Granite Grey



RAL7024  
Graphite Grey



RAL7021  
Black Grey



RAL1013  
Oyster White



RAL1015  
Light Ivory



RAL1014  
Ivory



RAL1000  
Green Beige



RAL1001  
Beige



RAL1011  
Brown Beige



RAL1002  
Sand Yellow



RAL1019  
Grey Beige



RAL1020  
Olive Yellow



RAL1024  
Ochre Yellow



RAL1027  
Curry



RAL1032  
Broom Yellow



RAL1021  
Yellow



RAL1018  
Zinc Yellow



RAL1033  
Dahlia Yellow



RAL2009  
Traffic Orange



RAL2004  
Pure Orange



RAL3004  
Purple Red



RAL1016  
Sulfur Yellow



RAL1012  
Lemon Yellow



RAL1034  
Pastel Yellow



RAL2010  
Signal Orange



RAL2008  
Bright Red Orange



RAL3005  
Wine Red



RAL1028  
Melon Yellow



RAL1023  
Traffic Yellow



RAL2000  
Yellow Orange



RAL2011  
Deep Orange



RAL3002  
Carmine Red



RAL3007  
Black Red



RAL1003  
Signal Yellow



RAL1017  
Saffron Yellow



RAL2001  
Red Orange



RAL2012  
Salmon Orange



RAL3003  
Ruby Red



RAL3009  
Oxide Red



RAL1004  
Golden Yellow



RAL1006  
Maize Yellow



RAL2002  
Vermilion



RAL3000  
Flame Red



RAL3013  
Tomato Red



RAL3011  
Brown Red



RAL1005  
Honey Yellow



RAL1007  
Daffodil Yellow



RAL2003  
Pastel Orange



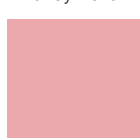
RAL3001  
Signal Red



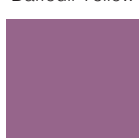
RAL3014  
Antique Pink



RAL3012  
Beige Red



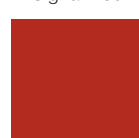
RAL3015  
Light Pink



RAL4001  
Red Lilac



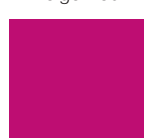
RAL4009  
Pastel Violet



RAL3016  
Coral Red



RAL4002  
Red Violet



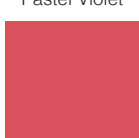
RAL4010  
Telemagenta



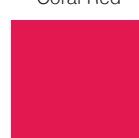
RAL4003  
Heather Violet



RAL4005  
Blue Lilac



RAL3017  
Rose



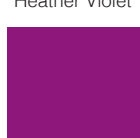
RAL3018  
Strawberry Red



RAL3020  
Traffic Red



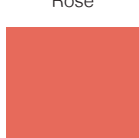
RAL4004  
Claret Violet



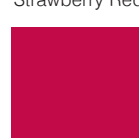
RAL4006  
Traffic Purple



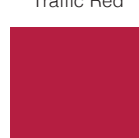
RAL4008  
Signal Violet



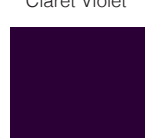
RAL3022  
Salmon Pink



RAL3027  
Raspberry Red



RAL3031  
Orient Red



RAL4007  
Purple Violet



RAL5024  
Pastel Blue



RAL5007  
Brilliant Blue



RAL5000  
Violet Blue



RAL5009  
Azure Blue



RAL5018  
Turquoise Blue



RAL6001  
Emerald Green



RAL5015  
Sky Blue



RAL5023  
Distant Blue



RAL5001  
Green Blue



RAL5010  
Gentian Blue



RAL5019  
Capri Blue



RAL6002  
Leaf Green



RAL5017  
Traffic Blue



RAL5014  
Pigeon Blue



RAL5002  
Ultramarine Blue



RAL5011  
Steele Blue



RAL5020  
Ocean Blue



RAL6003  
Olive Green



RAL5005  
Signal Blue



RAL5012  
Light Blue



RAL5003  
Sapphire Blue



RAL5008  
Grey Blue



RAL5021  
Water Blue



RAL6004  
Blue Green



RAL5013  
Cobalt



RAL5022  
Night Blue



RAL5004  
Black Blue



RAL6000  
Patina Green



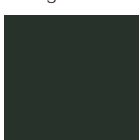
RAL6034  
Pastel Turquoise



RAL6005  
Moss Green



RAL6007  
Bottle Green



RAL6015  
Black Olive



RAL6024  
Traffic Green



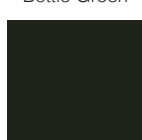
RAL6027  
Light Green



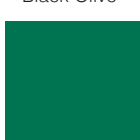
RAL6019  
Pastel Green



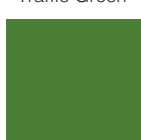
RAL6028  
Pine Green



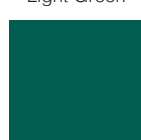
RAL6008  
Brown Green



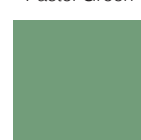
RAL6016  
Turquoise Green



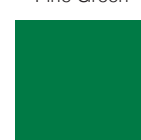
RAL6025  
Fern Green



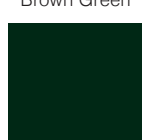
RAL6026  
Opal Green



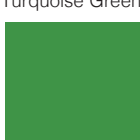
RAL6021  
Pale Green



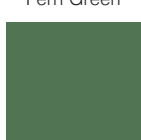
RAL6029  
Mint Green



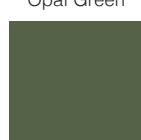
RAL6009  
Fir Green



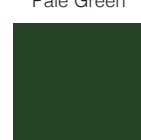
RAL6017  
May Green



RAL6011  
Reseda Green



RAL6013  
Reed Green



RAL6020  
Chrome Green



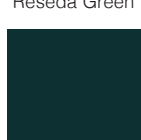
RAL6032  
Signal Green



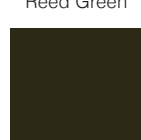
RAL6010  
Grass Green



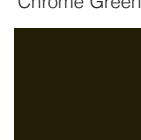
RAL6018  
Yellow Green



RAL6012  
Black Green



RAL6014  
Yellow Olive



RAL6022  
Olive Drab



RAL6033  
Mint Turquoise





RAL8015  
Chestnut Brown



RAL8012  
Red Brown



RAL8024  
Beige Brown



RAL8023  
Orange Brown



RAL8002  
Signal Brown



RAL8017  
Chocolate Brown



RAL8019  
Grey Brown



RAL9004  
Signal Black



RAL8008  
Olive Brown



RAL8003  
Clay Brown



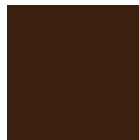
RAL8000  
Green Brown



RAL8004  
Copper Brown



RAL8016  
Mahogany Brown



RAL8014  
Sepia Brown



RAL8025  
Pale Brown



RAL8001  
Ocher Brown



RAL8007  
Fawn Brown



RAL8022  
Black Brown



RAL9005  
Jet Black



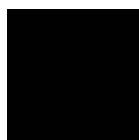
RAL9011  
Graphite Black



RAL8011  
Nut Brown



RAL8028  
Terra Brown

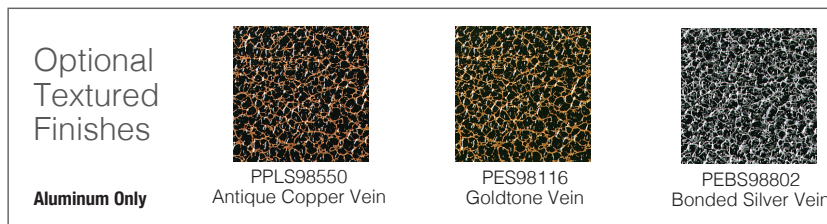
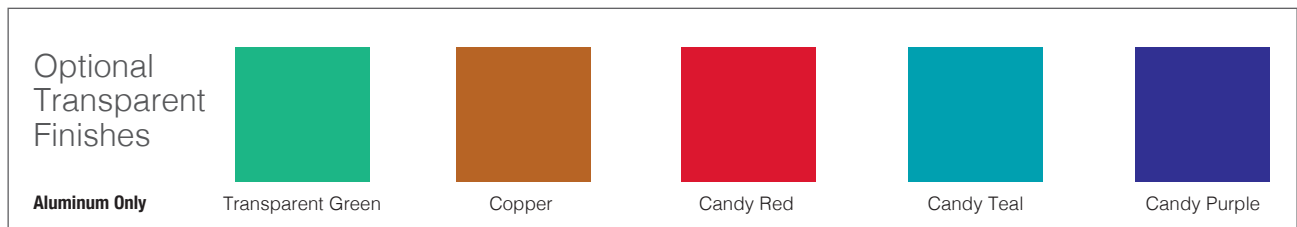


RAL9017  
Traffic Black

*Colors are reproduced with reasonable accuracy in standard Gloss finish unless noted Matte. If match is critical, contact us at 800-434-4610 for actual samples.*

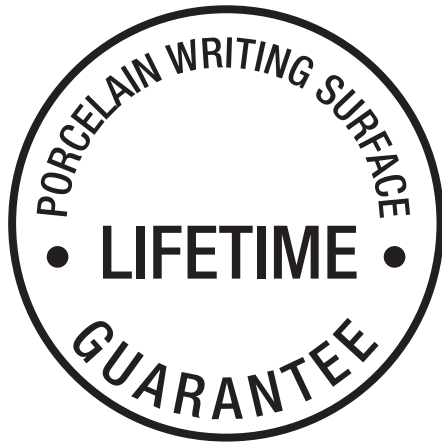
## Standard Color Selections for Aluminum

Claridge offers the durability and brilliance of powder coat finishes for aluminum framed boards, mobile marker-boards cases, display cabinets and virtually any product offered with a metal or extruded aluminum component. Choose from any of the 24 standard colors shown below, or select from more than a 180 optional powder coat color examples inside – including textured and transparent finish choices.



800.434.4610  
claridgeproducts.com

# Claridge®



Under normal usage and maintenance, and when installed in accordance with manufacturer's instructions and recommendations, LCS Porcelain enamel steel markerboard and chalkboard writing surfaces are guaranteed for the Life of the Building.

Guarantee covers replacement of defective boards but does not include the cost of removal or re-installation.



Under normal usage and maintenance, Claridge products are guaranteed for one year.

This guarantee covers repair or replacement of the manufactured parts that fail in materials or workmanship within the specified warranty period. Guarantee covers replacement of defective parts only and does not include cost of removal or re-installation.



**SCS Global Services** does hereby certify that an independent assessment has been conducted on behalf of:

# Claridge Products & Equipment

480 Wrangler Drive  
Suite 200, Coppell, 75019, United States

For the following product(s):

See Addendum

The product(s) meet(s) all of the necessary qualifications to be certified for the following claim(s):

## Indoor Advantage™ Gold

Indoor Air Quality Certified to SCS-105 v4.2

Conforms to the ANSI/BIFMA Furniture Emissions Standard (M7.1/X7.1-2011 R2021) and ANSI/BIFMA e.3-2019 (Credits 7.6.2, 7.6.3) for the open plan and (Credits 7.6.1, 7.6.2, 7.6.3) private office workstation parameters.<sup>1</sup> Also, conforms to the CDPH/EHLB Standard Method (CA 01350) v1.2-2017 for the open plan and school classroom parameters.<sup>1</sup>

<sup>1</sup>Modeled as Individual Furniture Components

Registration # SCS-IAQ-09072

Valid from: November 04, 2024 to June 08, 2025



INDOOR ADVANTAGE GOLD  
FURNITURE



ANSI National Accreditation Board  
ACCREDITED

ISO/IEC 17065  
PRODUCT CERTIFICATION  
BODY



Diana Kirsanova Phillips, Chief Assurance  
Officer,  
SCS Global Services

## **Certification Addendum**

### **Claridge Products & Equipment**

Certification: Registration # SCS-IAQ-09072 | Valid from: November 04, 2024 to June 08, 2025

#### **Addendum Indoor Advantage™ Gold**

Conformance: Indoor Air Quality Certified to SCS-105 v4.2

Conforms to the ANSI/BIFMA Furniture Emissions Standard (M7.1/X7.1-2011 R2021) and ANSI/BIFMA e.3-2019 (Credits 7.6.2, 7.6.3) for the open plan and (Credits 7.6.1, 7.6.2, 7.6.3) private office workstation parameters.<sup>1</sup> Also, conforms to the CDPH/EHLB Standard Method (CA 01350) v1.2-2017 for the open plan and school classroom parameters.<sup>1</sup>

<sup>1</sup>Modeled as Individual Furniture Components

#### **Products:**

##### **Visual Display Boards:**

3300 Series Tackboard, 3400 Series Tackboard, 344 Wave Lectern, 370 Series Recessed Display Case, 390 Large Door Recessed Display Case, 725 Folding Screen, 748 Universal Display Case, 79 Hang-Tight Rail System, 800 Series Markerboard, 800 Series Tackboard, 800 Series Type BR/BL Combo Markerboard Tackboard, 900A Tackboard, 94 Combination Map Rail & Clip Strip, Aceno Room Divider Panels-Base, Aceno Track System, Arise Marker Walls, Arise Markerboard, Aspire Markerboards, Claridge LCS Porcelain, Classic Series Bulletin Board Cabinet, Classic Series Display Case, Concept Markerboard, Concept Tackboard, Connect X2 3 Caster Mobile Markerboard, Connect X2 Combination Markerboard/Tackboard, Connect X2 Full Height Mobile Markerboard Porcelain-Glass, Connect X2 Markerboard Porcelain-Glass, Connect X2 Partial Height Markerboard, Connect X2 Space Creator Porcelain-Cork-Fabric, Connect X2 Tackboard, Contemporary Series Bulletin Board Cabinet, Contemporary Series Bulletin Board Cabinet, Contemporary Style Laminate Lecture Unit, Contio Mobile Markerboard, CS Clip Strips, Cursive Board, Cursive One Markerboard-Tackboard, Custom Printed Glass Boards, Deluxe Series Bulletin Board Cabinet, Deluxe Series Revolving Two-sided Mobile Markerboard, Deluxe Two-sided Mobile Markerboard, Display Case-Cabinet, Economy and Deluxe Map & Display Rail, Edify Mobile Markerboard, EDR Exhibit Rail, Envision Graphics Markerboard, Economy and Deluxe Map & Display Rail, Evolve Markerboard, Evolve Sliding System, Evolve Tackboard, EZ Fit Markerboard Panel, Framed Tackboard, Glass Marker Walls, Glass Markerboards, Horizontal Sliding Markerboards, Imperial Series Bulletin Board Cabinet, Large Contemporary Series Bulletin Board Cabinet, Large Format Glass Marker System, Large Format Porcelain Marker System, LCS Deluxe Markerboard-Aluminum Frame,

## **Certification Addendum** **Claridge Products & Equipment**

Certification: Registration # SCS-IAQ-09072 | Valid from: November 04, 2024 to June 08, 2025

### Addendum **Indoor Advantage™ Gold**

Conformance: Indoor Air Quality Certified to SCS-105 v4.2

Conforms to the ANSI/BIFMA Furniture Emissions Standard (M7.1/X7.1-2011 R2021) and ANSI/BIFMA e.3-2019 (Credits 7.6.2, 7.6.3) for the open plan and (Credits 7.6.1, 7.6.2, 7.6.3) private office workstation parameters.<sup>1</sup> Also, conforms to the CDPH/EHLB Standard Method (CA 01350) v1.2-2017 for the open plan and school classroom parameters.<sup>1</sup>

<sup>1</sup>Modeled as Individual Furniture Components

### Products:

#### **Visual Display Boards Continued:**

LCS Deluxe Markerboard-Aluminum Frame No Map Rail, LCS Deluxe Markerboard-Wood Frame, LCS Elite Markerboard, LCS Select Markerboard, LCS Wall-Write Marker Wall, LCS-Glass Combo Boards, Magnetic Glass Markerboard, Magnetic Non-Glare Glass Markerboard, Marker Walls, Merit Series Markerboard, Mina Mobile, Mina Space Creator, Non-Magnetic Non-Glare Glass Markerboard, Premier Wall Mounted Display Case, Premiere Freestanding Display Case, Premiere Series Reversible Mobile Markerboard w/ aluminum trim, Profile Frameless LCS Porcelain Markerboard, Revere Series Bulletin Board, Revere Series Bulletin Board Cabinet, Ripple Space Divider Acoustic-Acrylic, Series 1 Markerboard, Series 1 Tackboard, Series 5 Markerboard, Series 5 Tackboard, Series 2 Markerboard, Series 2 Tackboard, Series 2500 Markerboard, Series 3 Markerboard, Series 3 Tackboard, Series 4 Markerboard, Series 4 Tackboard, Series 8 Markerboard, Series 8 Tackboard, Sliding Marker Wall Systems Porcelain-Glass, Switch Markerboard Porcelain-Glass, Switch Mobile Markerboard Porcelain-Glass, Tableau Markerboard Porcelain-Glass, Tableau Tackboard, Tack Wall, TacPads Acoustic Fabric-Wrapped, Trak-it-system, TrimLine Markerboard, Universal Series Bulletin Board Cabinet, Utility A-Frame Mobile Markerboard, Venue Markerboard Porcelain-Glass, Venue Space Divider Porcelain-Glass Acoustic, Venue T-Leg Mobile Markerboard porcelain-Glass, Venue V-Leg Mobile Markerboard Porcelain-Glass, Vertical Sliding Markerboards, Xchange Graphic Board

*Excludes products with wood trim. Excludes products manufactured with a cork substrate. Tackboard included are constructed with a fabricork or designer fabric over Duracore or Micore.*