

Series 2

Markerboard, Chalkboard, Tackboard

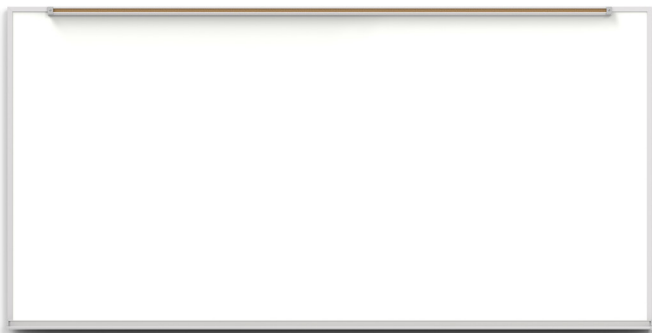


Claridge Series Boards are found in K-12 schools across the nation as the trusted brand in education. An incredibly smooth LCS Porcelain surface delivers a great writing experience and will stand the test of time. LCS Porcelain steel accepts magnets, won't ghost or stain, and is warrantied for life.

- Series 2 has a perimeter trim size of 3/4"
- Claridge LCS Porcelain surfaces accept magnetic accessories
- Projection friendly writing surface that won't ghost or stain
- Available in both markerboard and chalkboard options
- Clear anodized aluminum frame - can be powder coated in 24 standard colors
- Tackboard options in Claridge Cork, Fabricork, Guilford of Maine Fabric, Hook-Fab, and Tan NuCork

Series 2

Markerboard, Chalkboard, Tackboard



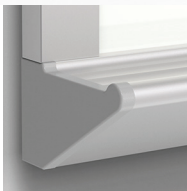
Trim Detail



Tray Options



Flat Tray



Box Tray

SPECIFICATIONS

- Perimeter trim is 3/4" wide
- Clear anodized aluminum frame
- 1" map rail and tray included, 2" map rail option available
- Maximum length, 16'; maximum height, 4'
- O.A. panel thickness approx. 1/2"
- Type A units have screw-through map rail at top; angle clips for bottom
- Type CO and Combos – angle clips 2' on center top and bottom
- LCS Porcelain surface is SCS Indoor Advantage certified, eco-friendly, and emits no VOC's

COLORS

- Markerboard colors in white, light gray, beige, and black
- Chalkboard colors in green, black, and gray

View Claridge LCS Porcelain Colors [HERE](#)

TACK MATERIAL COLORS

- Select tack materials from Claridge Cork, Fabricork, and standard fabrics from Guilford of Maine

View Tack Material Colors [HERE](#)

[Learn More](#)

Standard Sizes (HxW)

4' x 4'	4' x 5'	4' x 6'	4' x 8'	4' x 10'	4' x 12'	4' x 14'	4' x 16'
3' x 4'							
2' x 3'	2' x 4'						

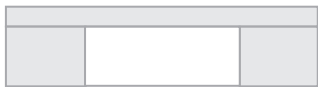
Typical Markerboard, Chalkboard & Tackboard Arrangements



Type A



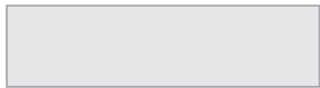
Type C



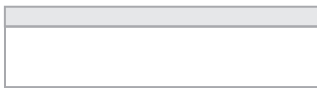
Type F



Type BR (Tackboard right), BL (TB left)



Type CO



Type D



Type H



Type ER (Tackboard right), EL (TB left)

- ☐ Markerboard or Chalkboard
- ☐ Tackboard, Slat Board, Peg Board, Graphic Board



Type GR (Tackboard right), GL (TB left)