

GRAIN

Wood Trim Whiteboard & Tackboard



Grain whiteboard or tackboard accents any space with a contemporary wood trim in natural or medium oak finish. LCS Porcelain whiteboard comes with a permanent full length marker tray, four assorted markers, and an eraser cloth.

- Best in Class Writing Surface LCS Porcelain
- 1-3/4" face trim
- Natural finish oak frame, medium oak finish available
- Writing surfaces accept magnetic accessories
- Tack surfaces available in Guilford of Maine FR701, Claridge Cork, Fabricork, and Tan Nucork

GRAIN

Wood Trim Whiteboard & Tackboard



Trim Detail



Tray Detail

SPECIFICATIONS

- 1-3/4" face trim
- Natural Oak finish trim, medium oak available
- Z-bar hangers clips at top

WRITING SURFACES

LCS Porcelain

- Projection friendly surface that won't ghost or stain
- Accepts magnetic accessories
- Surface is SCS Indoor Advantage Gold certified, eco-friendly, and emits no VOC's
- 3 markerboard colors
- 3 chalkboard colors
- Lifetime warranty

[View LCS Porcelain Colors HERE](#)

Tackable Surfaces

Tackboard surface in Guilford of Maine FR701 fabric, Claridge Cork, Fabricork, and Tan Nucork

[View Tackable Surface Options HERE](#)

WHITEBOARD SIZES (HxW):

- 4' x 4'
- 4' x 6'
- 4' x 8'
- 4' x 10'

TACKBOARD SIZES (HxW):

- 2' x 3'
- 3' x 4'
- 4' x 4'
- 4' x 6'
- 4' x 8'

[LEARN MORE](#)



Grain Wood Trim Markerboards



INSTALLATION INSTRUCTIONS

WARNING

Risk of injury to installers and users

Read the entire assembly directions before beginning assembly.

Tools Needed:

Laser/Level
Drill and drill bit
Screwdriver
Tape measure
Rubber mallet
Safety glasses
Straight edge

Instructions:

1. Determined desired height of the top of the board and mark a line.
2. Lay the board face down and engage the Z bar hangers into the hangers mounted on the back of the board.
3. Measure from the top of the board to the bottom of the engaged z bar hanger. Transfer that measurement to the wall down from the desired height mark and strike a level line.
4. Place the bottom of the hanger on the level line and secure with proper wall fasteners.
Note: Make sure the wall hangers will align with the hangers on the back of the board.
5. Use a straight edge to check for flatness. Hangers may need to be shimmed accordingly.
6. From the desired height mark measure down the height of the board minus 1/2 "and mark a level line. Drill on the line to secure the angle clips. Clips should be plumb with the hangers. Use appropriate fasteners to mount the angle at its lowest point. Do not overtighten the clip to the wall. This will allow for the clip to be adjusted.
7. Install the board by raising the boards slightly higher than the Z bar hangers on the wall. Lower the board allowing the hangers to engage. Next with the board resting on the hangers tap the bottom angle clips up and fasten with the provided screws.



800-434-4610
claridgeproducts.com



CLARIDGE CORK
Color Guide



NO. 1108 MUSHROOM



NO. 1103 OYSTER



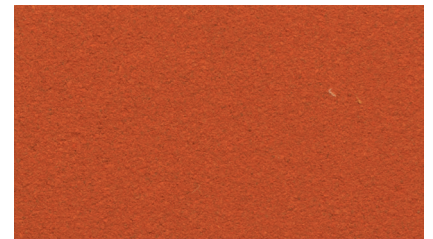
NO. 1117 SALSA



NO. 1109 BUFF



NO. 1111 SMOKE



NO. 1118 TANGERINE



NO. 1110 FAWN



NO. 1113 STEEL GRAY



NO. 1119 PINEAPPLE



NO. 1100 TAN



NO. 1136 GRAPHITE



NO. 1120 LETTUCE



NO. 1104 CINNAMON



NO. 1132 BLACK



NO. 1129 BLUEBERRY

Note: Color may vary slightly from samples.



PRODUCT DESCRIPTION

Claridge Cork is made from pure, natural ingredients including linseed oil, pine resin, cork and pigments that are calendared onto a jute backing to create a smooth, suede-like surface of unsurpassed beauty and exceptional durability.

FEATURES

- Environmentally friendly
- Tacks insert easily, are gripped firmly
- Does not crack, peel or crumble
- Washable stain-resistant finish
- Expanded color range - 15 harmonizing colors
- Dimensionally stable
- Meets ASTM E-84, NFPA 258 (fuel contribution) - Class B, and NFPA 255 (critical radiant flux) - Class II
- No toxins - no harmful by-products or emissions
- Low light reflectance
- Naturally inhibits bacterial growth

Note: Features referenced above reflect characteristics of the cork surface only.



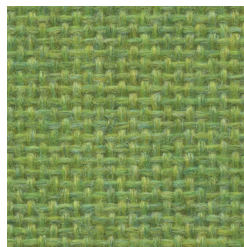
1683 Silver



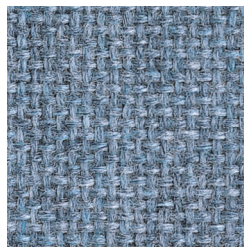
1690 Grey Mix



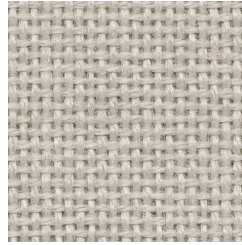
1685 Flannel



1680 Lime



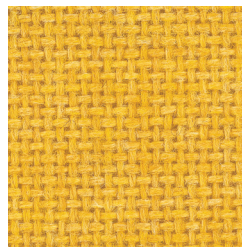
1689 Wedgewood



1686 Dark Pearl



1692 Wheat



1693 Sunshine



1688 Cobalt



1691 Quartz



1681 Cement Mix



1679 Cardinal



1684 Noir

Please note minimal color shade variations may occur from one dye lot to another.

TACKBOARD FABRICS

FR701® 2100

Specifications

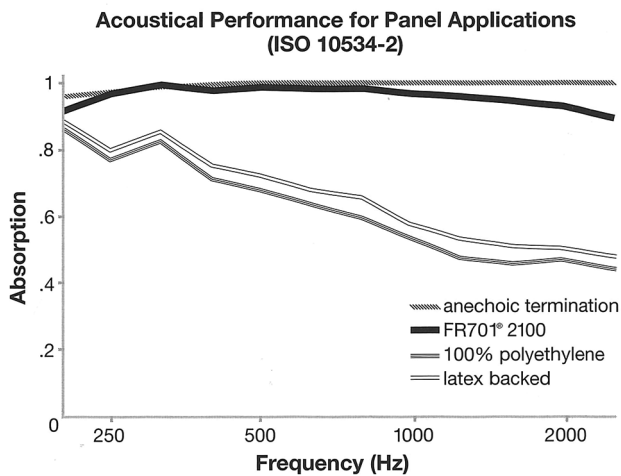
Content 100% post-consumer recycled polyester

Weight 16.0 ± 0.5 oz./lin. yd.

Width 66" min. usable

Acoustical Performance

The plot below summarizes impedance tube measurements of absorption of an anechoic termination and various fabrics in front of the anechoic termination.



NRC of anechoic termination - 1.00

NRC of fabric in front of anechoic termination - .95

Performance



Colorfastness to Light (AATCC 16.3 Option 3)
Grade 4 min. at 40 hours



Colorfastness to Crocking (AATCC 8)
Grade 4 min. dry & Grade 3 min. wet



Breaking Strength (ASTM D5034)
150 lbf min. warp and fill



Flammability (ASTM E84)
Class 1 or A

Cleaning Code

Clean with water based cleaning agents, foam or pure, water free solvents. Vacuuming or light brushing is recommended to prevent dust and soil buildup.

Miscellaneous

Colors may vary between dye lots. This is non-directional fabric. Proudly woven in the USA supporting our local communities.



TerraTex is a registered trademark of Truex Textiles, Inc. and designates fabrics that are made from 100% recycled or compostable material using increasingly sustainable manufacturing practices to produce a high quality product that is recyclable at the end of its useful life.



CO₂ emissions from 100% of the electricity used by the manufacturer to produce this product have been measured and offset in accordance with The CarbonNeutral Protocol.



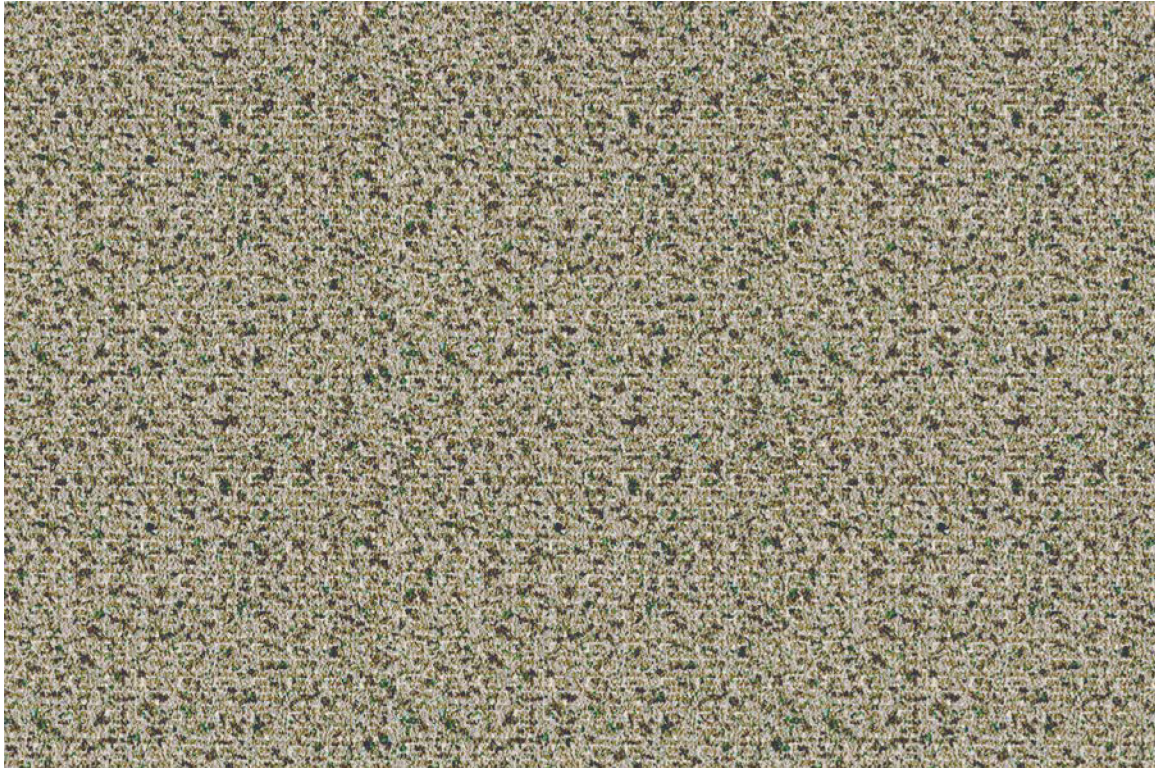
This pattern is included in the underwriters laboratory panel fabric recognition program. Additional testing of this U.L. recognized component fabric is not required on approved panels from participating manufacturers.



800.434.4610
claridgeproducts.com



FABRICORK
Color Options



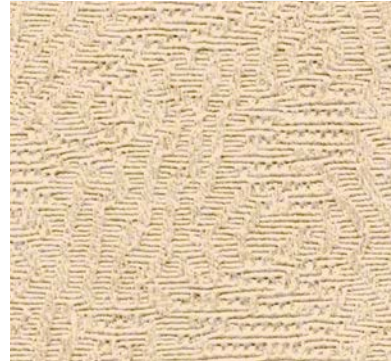
KE584 POWER

Claridge Fabricork Vinyl Bulletin Board is made of vinyl coated fabric that will wear almost indefinitely and stay new-looking for years. Fabricork is entirely washable. Spots and soil wash away with household soap and water.

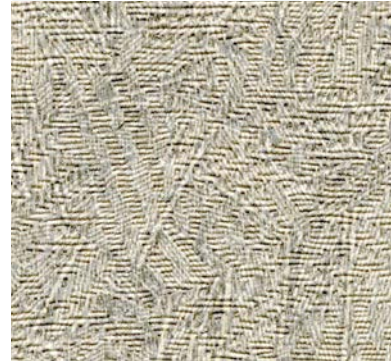
Featuring Koroseal® Wallcovering
Manufactured by Koroseal Interior Products LLC

Please note minimal color variation may occur with each dye lot.

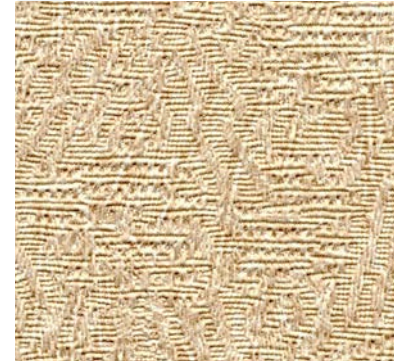
Viewpoint Pattern



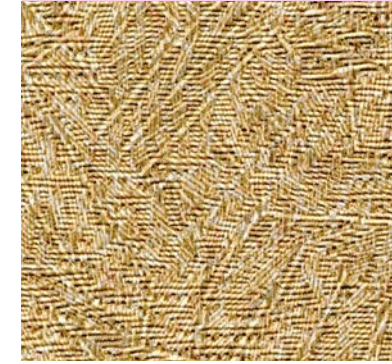
KV216 ECRU



KV230 OYSTER



KV241 WHEAT STRAW

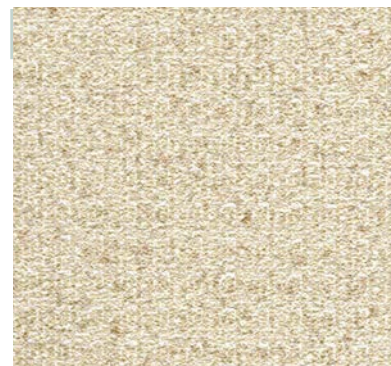


KV237 CURRY



KV233 DRIFTWOOD

Esquire Pattern



KE522 INNOCENT



KE592 GENTLEMAN GREY



KE510 RUNWAY



KE584 POWER



KE591 COUNSELOR

Linden Pattern



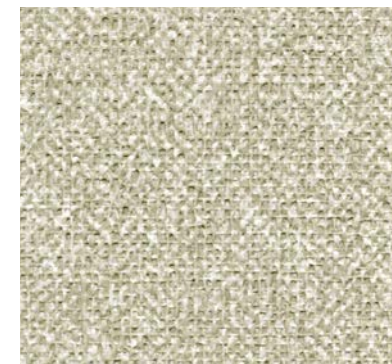
KL490 RECTORY



KL498 WINTHROPE



KL404 DORSET



KL483 DOWNING STONE



KL412 ANCESTRAL

Belair Pattern



KB290 STERLING



KB278 PACIFIC



KB661 DAWN



KB662 GREY



KB664 ANTIQUE



FEATURES

- Meets or exceeds Type 1 requirements in Federal Specification CCC-W-408A
- Manufactured with water based inks and coatings
- Has a water based acrylic top coat for improved cleanability
- Cadmium and Mercury Free
- Meets CA 01350 requirements
- Contains Early Warning Effect[®] Life Safety and Property Protection
- Can be supplied Micro-vented to reduce potential for mold and mildew growth

PATTERNS

- Viewpoint
- Esquire
- Linden
- Belair

PROPERTIES

Total Weight	Viewpoint, Esquire and Linden - 21 oz/linear yd. Belair - 15 oz/linear yd.
Average Thickness	0.017 to 0.021 in.
Tensile (typical)	Viewpoint, Esquire and Linden - 50 x 55 lbf minimum Belair - 30 x 30 lbf minimum
Tear (typical)	Viewpoint, Esquire and Linden - 25 x 25 minimum Belair - 12 x 12 minimum
ASTM E84 Test Results	Class A
Flame Spread	25 or less
Smoke Developed	50 or less

Koroseal Interior Products LLC
Koroseal[®] Wallcovering • www.koroseal.com

Koroseal[®] and Early Warning Effectare[®]
trademarks and registered trademarks of
Koroseal Interior Products LLC.





TAN NUCORK BULLETIN BOARD SAMPLE



TAN NUCORK is a premium grade, fine grain natural tan composition cork. Nucork is dimensionally stable and has uniform density and particle size.

- An economical tackboard surface, Tan Nucork is pure grain natural cork without burlap backing
- Nucork has a smooth, resilient surface ideal for use with pins or thumbtacks
- 150 FR Nucork has a Class B fire rating based on ASTM E84 tunnel test as follows: flame spread – 65; smoke developed – 70. Meets military specification MIL-C-15116, Type II



800.434.4610
claridgeproducts.com



WOOD
FINISH COLORS



ESPRESSO



MAHOGANY



CHERRY



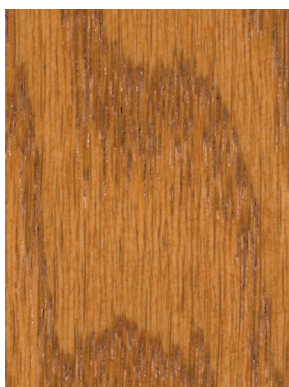
MAPLE



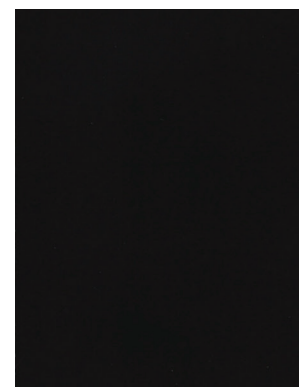
WALNUT



NATURAL OAK



MEDIUM OAK



EBONY

NOTE: We cannot guarantee exact duplication of these samples. Variation in color and grain can be expected. If color match is critical, return sample with order and every attempt will be made to match as closely as possible.



800.434.4610
claridgeproducts.com



Under normal usage and maintenance, Claridge products are guaranteed for one year.

This guarantee covers repair or replacement of the manufactured parts that fail in materials or workmanship within the specified warranty period. Guarantee covers replacement of defective parts only and does not include cost of removal or re-installation.



SCS Global Services does hereby certify that an independent assessment has been conducted on behalf of:

Claridge Products & Equipment

480 Wrangler Drive, Suite 200, Coppell, TX, United States

For the following product(s):

See Addendum

The product(s) meet(s) all of the necessary qualifications to be certified for the following claim(s):

Indoor Advantage™ Gold

Indoor Air Quality Certified to SCS-EC10.3-2014 v4.1

Conforms to the ANSI/BIFMA Furniture Emissions Standard (M7.1/X7.1-2011 R2021) and ANSI/BIFMA e.3-2019 (Credits 7.6.1, 7.6.2, 7.6.3) for the open plan and private office workstation parameters.¹ Also, conforms to the CDPH/EHLB Standard Method (CA 01350) v1.2-2017 for the open plan and school classroom parameters.¹

¹ Modeled as Individual Furniture Components

Registration # SCS-IAQ-09072

Valid from: June 9, 2023 to June 8, 2024



INDOOR ADVANTAGE GOLD
FURNITURE



A handwritten signature in black ink that reads "Stanley Mathuram".

Stanley Mathuram, PE, Executive Vice President
SCS Global Services
2000 Powell Street, Ste. 600, Emeryville, CA 94608 USA

Certification Addendum

Claridge Products & Equipment

Certification: Registration # SCS-IAQ-09072 | Valid from: June 9, 2023 to June 8, 2024

Indoor Advantage™ Gold

Addendum Indoor Air Quality Certified to SCS-EC10.3-2014 v4.1

Conformance: Conforms to the ANSI/BIFMA Furniture Emissions Standard (M7.1/X7.1-2011 R2021) and ANSI/BIFMA e.3-2019 (Credits 7.6.1, 7.6.2, 7.6.3) for the open plan and private office workstation parameters.¹ Also, conforms to the CDPH/EHLB Standard Method (CA 01350) v1.2-2017 for the open plan and school classroom parameters.¹

¹ Modeled as Individual Furniture Components

Products: Visual Display Boards:

213 Series Tackboard with Wood Frame, 309 Sliding Door Display Case, 310 Wood Framed Bulletin Board Cabinet, 3300 Series Tackboard, 3400 Series Tackboard, 344 Wave Lectern, 370 Series Recessed Display Case, 390 Large Door Recessed Display Case, 700 Series Wood, 725 Folding Screen, 742 Freestanding Display Case, 748 Universal Display Case, 79 Hang-Tight Rail System, 800 Series Markerboard, 800 Series Tackboard, 800 Series Type BR/BL Combo Markerboard Tackboard, 900A Tackboard, 94 Combination Map Rail & Clip Strip, Aceno Room Divider Panels-Base, Aceno Storage Cart, Aceno Track System, Arise Marker Walls, Arise Markerboard, Aspire Markerboards, Claridge LCS Porcelain, Classic Series Bulletin Board Cabinet, Classic Series Display Case, Concept Markerboard, Concept Tackboard, Connect X2 3 Caster Mobile Markerboard, Connect X2 Combination Markerboard/Tackboard, Connect X2 Full Height Mobile Markerboard Procelain-Glass, Connect X2 Markerboard Porcelain-Glass, Connect X2 Partial Height Markerboard, Connect X2 Space Creator Porcelain-Cork-Fabric, Connect X2 Tackboard, Contemporary Series Bulletin Board Cabinet, Contemporary Series Bulletin Board Cabinet, Contemporary Style Laminate Lecture Unit, Contemporary Style Wood Lecture Unit, Contio Mobile Markerboard, CS Clip Strips, Cursive Board, Cursive One Markerboard-Tackboard, Custom Printed Glass Boards, Deluxe Series Bulletin Board Cabinet, Deluxe Series Revolving Two-sided Mobile Markerboard, Deluxe Two-sided Mobile Markerboard, Display Case-Cabinet, Economy and Deluxe Map & Display Rail,

Certification Addendum

Claridge Products & Equipment

Certification: Registration # SCS-IAQ-09072 | Valid from: June 9, 2023 to June 8, 2024

Indoor Advantage™ Gold

Addendum Indoor Air Quality Certified to SCS-EC10.3-2014 v4.1

Conformance: Conforms to the ANSI/BIFMA Furniture Emissions Standard (M7.1/X7.1-2011 R2021) and ANSI/BIFMA e.3-2019 (Credits 7.6.1, 7.6.2, 7.6.3) for the open plan and private office workstation parameters.¹ Also, conforms to the CDPH/EHLB Standard Method (CA 01350) v1.2-2017 for the open plan and school classroom parameters.¹

¹ Modeled as Individual Furniture Components

Products: Edify Mobile Markerboard, EDR Exhibit Rail, Envision Graphics Markerboard, Economy and Deluxe Map & Display Rail, Evolve Markerboard, Evolve Sliding System, Evolve Tackboard, EZ Fit Markerboard Panel, Framed Tackboard, Glass Marker Walls, Glass Markerboards, Horizontal Sliding Markerboards, Imperial Series Bulletin Board Cabinet, Large Contemporary Series Bulletin Board Cabinet, Large Format Glass Marker System, Large Format Porcelain Marker System, LCS Deluxe Combo Markerboard-Tackboard w/Wood frame, LCS Deluxe Markerboard-Aluminum Frame, LCS Deluxe Markerboard-Aluminum Frame No Map Rail, LCS Deluxe Markerboard-Wood Frame, LCS Elite Markerboard, LCS Select Markerboard, LCS Wall-Write Marker Wall, LCS-Glass Combo Boards, Magnetic Glass Markerboard, Magnetic Non-Glare Glass Markerboard, Marker Walls, Merit Series Markerboard, Mina Mobile, Mina Space Creator, MIX Biophilic Mobile, MIX Mobile Glass-Porcelain Markerboard, MIX Mobile Markerboard-Tackboard, MIX Wood Framed Markerboard, MIX Wood Framed Tackboard, MLC405 Presentation Easel, Motif Wood Frame Markerboard, Motif Wood Frame Tackboard, Nimbus Multi-Purpose Mobile, Non-Magnetic Non-Glare Glass Markerboard, Premier Wall Mounted Display Case, Premiere Freestanding Display Case, Premiere Series Reversible Mobile Markerboard w/ aluminum or wood trim, Profile Frameless LCS Porcelain Markerboard, Ravina Markerboard Glass-Porcelain, Ravina Tackboard Fabric-Acoustic, Revere Series Bulletin Board, Revere Series Bulletin Board Cabinet, Ripple Space Divider Acoustic-Acrylic, Series 1 Markerboard, Series 1 Tackboard, Series 1100 Wood Framed Markerboard, Series 1100 Wood Framed Markerboard, Series 1100 Wood Framed Tackboard, Series 2 Markerboard, Series 2 Tackboard,

Certification Addendum

Claridge Products & Equipment

Certification: Registration # SCS-IAQ-09072 | Valid from: June 9, 2023 to June 8, 2024

Indoor Advantage™ Gold

Addendum Indoor Air Quality Certified to SCS-EC10.3-2014 v4.1

Conformance: Conforms to the ANSI/BIFMA Furniture Emissions Standard (M7.1/X7.1-2011 R2021) and ANSI/BIFMA e.3-2019 (Credits 7.6.1, 7.6.2, 7.6.3) for the open plan and private office workstation parameters.¹ Also, conforms to the CDPH/EHLB Standard Method (CA 01350) v1.2-2017 for the open plan and school classroom parameters.¹

¹ Modeled as Individual Furniture Components

Products: Series 200 Markerboard, Series 200 Tackboard, Series 2000 Markerboard, Series 2000 Tackboard, Series 2100 Wood Framed Markerboard, Series 2100 Wood Framed Tackboard, Series 2500 Markerboard, Series 2900 Markerboard, Series 3 Markerboard, Series 3 Tackboard, Series 4 Markerboard, Series 4 Tackboard, Series 400 Markerboard, Series 400 Tackboard, Series 4000 Markerboard, Series 4000 Tackboard, Series 500 Markerboard, Series 500 Tackboard, Series 6000 Markerboard, Series 6000 Tackboard, Series 8 Markerboard, Series 8 Tackboard, Series 8000 Markerboard, Series 8000 Tackboard, Sliding Marker Wall Systems Porcelain-Glass, Switch Markerboard Porcelain-Glass, Switch Mobile Markerboard Porcelain-Glass, Tableau Markerboard Porcelain-Glass, Tableau Tackboard, Tack Wall, TacPads Acoustic Fabric-Wrapped, Trak-it-system, TrimLine Markerboard, Universal Series Bulletin Board Cabinet, Utility A-Frame Mobile Markerboard, Venue Markerboard Porcelain-Glass, Venue Space Divider Porcelain-Glass Acoustic, Venue T-Leg Mobile Markerboard porcelain-Glass, Venue V-Leg Mobile Markerboard Porcelain-Glass, Vertical Sliding Markerboards, WDR Wooden Display Rail, Wood Frame Bulletin Board Cabinet, Xchange Graphic Board

Excludes products manufactured with a cork substrate

Tackboard included are constructed with a fabricork or designer fabric over Duracore or Micore.