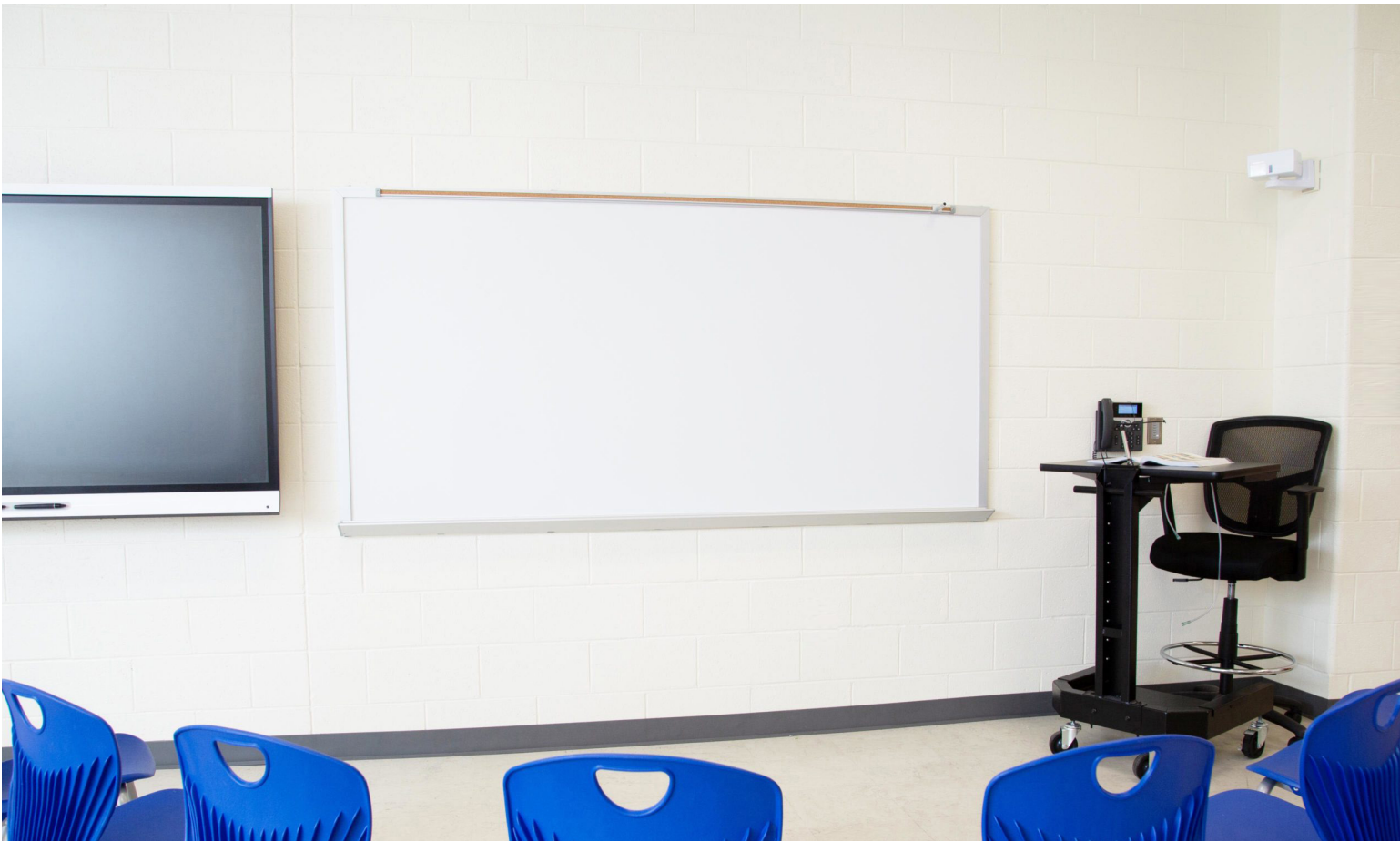


Series 1

Markerboard, Chalkboard, Tackboard

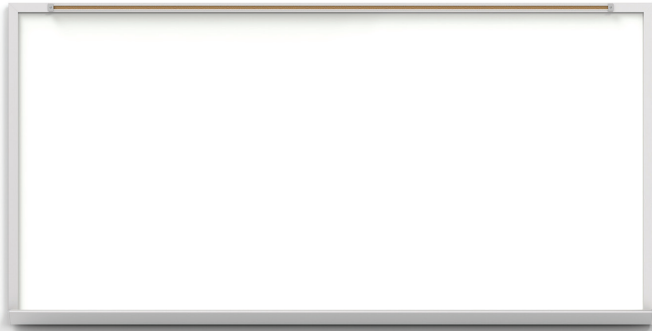


Claridge Series Boards are found in K-12 schools across the nation as the trusted brand in education. An incredibly smooth LCS Porcelain surface delivers a great writing experience and will stand the test of time. LCS Porcelain steel accepts magnets, won't ghost or stain, and is warrantied for life.

- Series 1 has a perimeter trim size of 1 1/2"
- Claridge LCS Porcelain surfaces accept magnetic accessories
- Projection friendly writing surface that won't ghost or stain
- Available in both markerboard and chalkboard options
- Satin anodize aluminum frame - can be powder coated in 24 standard colors
- Tackboard options in Claridge Cork, Fabricork, Guilford of Maine Fabric, Hook-Fab, and Tan NuCork

Series 1

Markerboard, Chalkboard, Tackboard



SPECIFICATIONS

- Perimeter trim is 1 1/2" wide
- Clear anodize aluminum frame
- 1" map rail and tray included, 2" maprail option available
- Maximum length, 16'; maximum height, 4'
- O.A. panel thickness approx. 1/2"
- Type A units have screw-through map rail at top; angle clips for bottom
- Type CO and Combos – angle clips 2' on center top and bottom
- LCS Porcelain surface is SCS Indoor Advantage certified, eco-friendly, and emits no VOC's

COLORS

- Markerboard colors in white, light gray, and beige
- Chalkboard colors in green, black, and gray

View Claridge LCS Porcelain Colors [HERE](#)

TACK MATERIAL COLORS

- Select tack materials from Claridge Cork, Fabricork, and standard fabrics from Guilford of Maine

View Tack Material Colors [HERE](#)

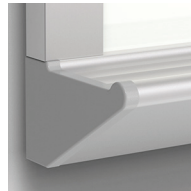
Trim Detail



Tray Options



Flat Tray



Box Tray

[Learn More](#)

Standard Sizes (HxW)

| | | | | | | | | |
|--|---------|---------|---------|---------|----------|----------|----------|----------|
| | 4' x 4' | 4' x 5' | 4' x 6' | 4' x 8' | 4' x 10' | 4' x 12' | 4' x 14' | 4' x 16' |
| | 3' x 4' | | | | | | | |
| | 2' x 3' | 2' x 4' | | | | | | |

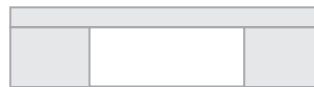
Typical Markerboard, Chalkboard & Tackboard Arrangements



Type A



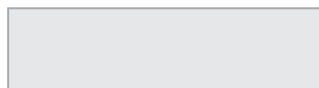
Type C



Type F



Type BR (Tackboard right), BL (TB left)



Type CO



Type D



Type H



Type ER (Tackboard right), EL (TB left)

Markerboard or Chalkboard

Tackboard, Slat Board, Peg Board, Graphic Board



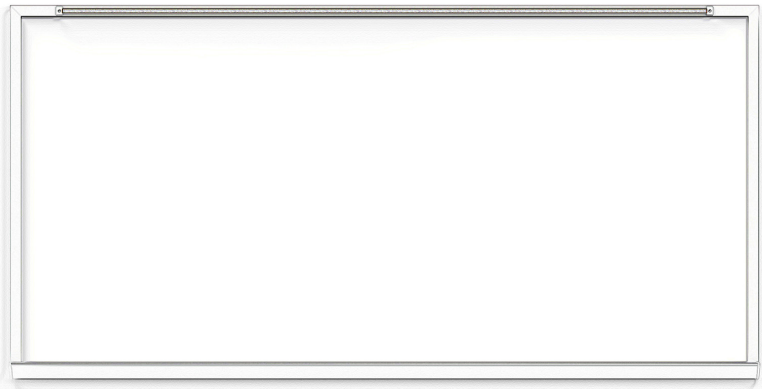
Type GR (Tackboard right), GL (TB left)



800-434-4610
claridgeproducts.com



Series 1 Factory Built Markerboards



INSTALLATION INSTRUCTIONS

INSPECTION

Claridge Factory Built Units are inspected and are approved as being without damage at the time of shipment. On arrival, carefully examine each carton for damage. If damage is visible have the driver clearly note that fact on your delivery receipt and file claim immediately. Immediately after delivery, open all cartons (save cartons) and inspect for concealed damage. If damage is discovered call carrier and request inspection. Failure to report concealed damage within 5 days will result in the carrier denying the claim. Claridge will not be responsible for damage claims if an inspection report is not secured and a claim not filed within the time limit.

PLEASE FOLLOW INSTRUCTIONS CAREFULLY TO BE ASSURED OF A GOOD INSTALLATION.

WARNING

Risk of injury to installers and users
Read the entire assembly directions before beginning assembly.

STORING INSTRUCTIONS (Pre-Installation)

Prefabricated markerboards, chalkboards, and tackboards have wood fiber cores or backing materials, and will, under certain climate conditions, show slight dimensional changes. Instructions must be followed to guarantee boards will remain flat and true.

1. After opening and inspecting boards for damage, return to original crates or cartons for storage and do not uncrate until boards are to be erected. Uncrated, they must not be allowed to lean at an angle against the wall or other objects and must not lay on the floor for any length of time. Boards should be stored in as close to a vertical position as possible.
2. Do not erect boards on damp walls or in damp and humid weather without heat in the building.
3. Clean off all fingerprints, dirt, etc. at once.
4. Follow pre-use instructions for optimal board performance.

Important Note:

For installations over 16'0" long joined with H-bars, and for combination units, check the back of the boards for run numbers. Boards have been matched at the factory, and assembly will match only if the proper run numbers are put in sequence.

Series 1 Installation Instructions

STEP-BY-STEP INSTRUCTIONS FOR INSTALLING MOUNTING ANGLES

For permanent installations, we recommend using a combination of angle clips and adhesive.

MARKERBOARD INSTALLATION:

For Masonry Walls:

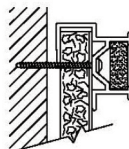
1. Attach bottom mounting angle clip or continuous angle to wall with required wall fasteners at architect's specified marker tray or chalk tray height. Wall fasteners not furnished. Caution should be exercised to assure that the hangers are level. INSTALL ANGLE CLIPS 24" O.C. (Except end clips which should be 3" in from end of board.)
2. Slide cork insert out of map rail from end. Pre-drill all the way through map rail and board (using same size drill as masonry bit to be used in Step 5) beginning 3" from each end of rail and repeating every 2'.
3. If using adhesive, apply (Claridge 16A or a wallboard or construction adhesive) to back of board according to manufacturer's printed instructions, or by staggering egg-size globs of adhesive approximately 12" o.c. Adhesive should not be closer than 6" to edge of board. Caution should be exercised not to use adhesive too sparingly or to allow adhesive to remain on back of board more than 10 minutes before hanging.
4. Install board by inserting bottom of board on top of bottom mounting angle. Press board firmly to wall and install screws furnished through angle into board trim at bottom of board only.
5. Drill through pre-drilled holes from Step 2 with a masonry bit, using appropriate fasteners to secure to wall (for installations using 2" map rail we recommend using truss head screws – appropriate for wall conditions – to insure adequate clearance between insert and screw head).
6. Replace cork insert and slide accessories into place, as required. Using self-tapping screws, install map rail end caps.
7. If protective film covers the board face, remove it and clean the surface before using. (See cleaning instructions.)
8. If adhesive is used, be certain entire markerboard or chalkboard is shored up for 48 to 72 hours until adhesive dries.

For Stud Walls:

Follow instructions above using appropriate size and length fasteners to secure board to wall. NOTE: It is not necessary to pre-drill holes as outlined in Step 2 above.

TACKBOARD INSTALLATION:

Attach bottom mounting angle clips as outlined in Step 1 above. Then, attach top mounting hangers (with slotted side to wall) maintaining board height plus approx. 1/8" clearance between top and bottom angle, (this will put the wall fastener in the bottom of the slot). NOTE: Snug down wall fastener, but DO NOT TIGHTEN completely. If adhesive is used, follow instructions in Step 2 and proceed to Step 3. After angle has been screwed to bottom of board, use a wooden block to tap top mounting angle down tight against board trim and install screws. See Step 7 instructions for adhesive drying time, if applicable.



Markerboard Installation



Tackboard Installation



800-434-4610
claridgeproducts.com

Standard Color Selections

Select from the 3 standard porcelain or 3 chalkboard colors

LCS Porcelain Colors - use with markers



No. 100 White

No. 101 Light Gray

No. 102 Beige

Chalkboard Colors - use with chalk



No. 500 Green

No. 501 Black

No. 502 Gray

Claridge LCS Porcelain enamel steel markerboard and chalkboard writing surfaces offer unsurpassed durability and performance – a lifetime of performance.

An environmentally friendly process that offers a wide range of decorative and functional colors for use on porcelain markerboards and walls.

- Smooth writing and clean erasing
- Unmatched scratch and stain resistance
- 100% non-combustible surface
- Magnetic surface
- Projection-friendly low gloss LCS surface
- Life of the Building Guarantee
- LCS Porcelain surface is SCS Indoor Advantage Certified

Colors are reproduced with reasonable accuracy, and are for color identification purposes only. If color is critical, contact us at 800-434-4610 to request an actual color sample.



LCS PORCELAIN Markerboard and Chalkboard Features

ENVIRONMENTAL FEATURES

- **SCS Indoor Advantage Certified**

SCS Indoor Advantage certifications are product certification programs for low emitting interior building materials, furnishings and finish systems. SCS Indoor Advantage certified products undergo rigorous testing and must meet stringent standards for low chemical emissions based on established health standards for use in environments such as schools and healthcare facilities.

- **Cradle-to-Cradle™ Bronze Certification**

Cradle-to-Cradle Certification focuses on the characteristics of sustainable materials, products, and systems. The process places emphasis on the human and ecological health impacts of a product's ingredients, and on the ability of that product to be recycled or composted.

Third-party environmental certification assures customers and end users that products selected support healthy indoor air quality and do not emit harmful chemicals. LCS is non-combustible, gives off no toxic gases and is 99.9% recyclable.

CLEANING INSTRUCTIONS

Claridge LCS Porcelain® enamel steel surfaces are guaranteed to withstand the rigors of everyday use. Proper use and maintenance will ensure performance and keep LCS Porcelain markerboards and chalkboards looking like new. Visit claridgeproducts.com for complete cleaning and maintenance instructions.

WRITING SURFACE WARRANTY

Claridge LCS Porcelain enamel steel markerboard and chalkboard writing surfaces offer unsurpassed durability and performance – a lifetime of performance. We are so confident in the quality and dependability of our LCS Porcelain surfaces that we Guarantee it for the Life of the Building!

SPECIFICATION

Claridge markerboard and chalkboard surfaces are manufactured in accordance with PEI-1002 Manual and Performance Specifications for LCS Porcelain Enamel Writing Surfaces. The writing surface is made from steel covered on both sides with enamel coatings. Fusion bonded to the steel, the resulting LCS Porcelain surface is smooth, durable and abrasion-resistant providing the best dry-erase surface available.



CLARIDGE CORK
Color Guide



NO. 1108 MUSHROOM



NO. 1103 OYSTER



NO. 1117 SALSA



NO. 1109 BUFF



NO. 1111 SMOKE



NO. 1118 TANGERINE



NO. 1110 FAWN



NO. 1113 STEEL GRAY



NO. 1119 PINEAPPLE



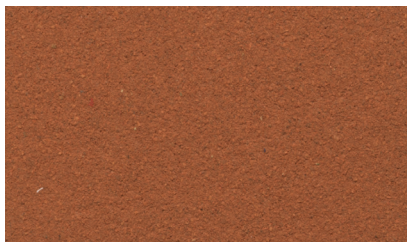
NO. 1100 TAN



NO. 1136 GRAPHITE



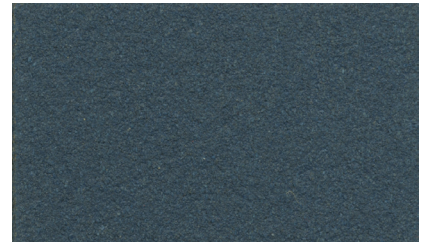
NO. 1120 LETTUCE



NO. 1104 CINNAMON



NO. 1132 BLACK



NO. 1129 BLUEBERRY

Note: Color may vary slightly from samples.



PRODUCT DESCRIPTION

Claridge Cork is made from pure, natural ingredients including linseed oil, pine resin, cork and pigments that are calendared onto a jute backing to create a smooth, suede-like surface of unsurpassed beauty and exceptional durability.

FEATURES

- Environmentally friendly
- Tacks insert easily, are gripped firmly
- Does not crack, peel or crumble
- Washable stain-resistant finish
- Expanded color range - 15 harmonizing colors
- Dimensionally stable
- Meets ASTM E-84, NFPA 258 (fuel contribution) - Class B, and NFPA 255 (critical radiant flux) - Class II
- No toxins - no harmful by-products or emissions
- Low light reflectance
- Naturally inhibits bacterial growth

Note: Features referenced above reflect characteristics of the cork surface only.



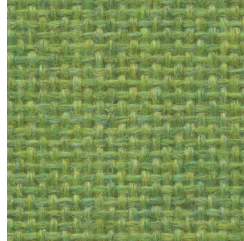
1683 Silver



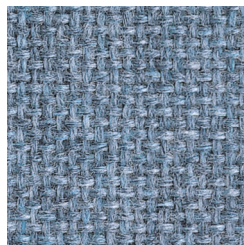
1690 Grey Mix



1685 Flannel



1680 Lime



1689 Wedgewood



1686 Dark Pearl



1692 Wheat



1693 Sunshine



1688 Cobalt



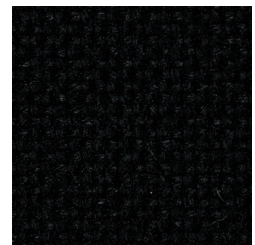
1691 Quartz



1681 Cement Mix



1679 Cardinal



1684 Noir

Please note minimal color shade variations may occur from one dye lot to another.

TACKBOARD FABRICS

FR701® 2100

Specifications

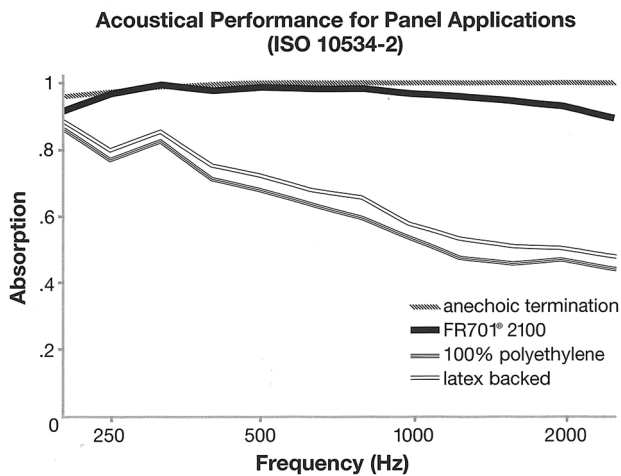
Content 100% post-consumer recycled polyester

Weight 16.0 ± 0.5 oz./lin. yd.

Width 66" min. usable

Acoustical Performance

The plot below summarizes impedance tube measurements of absorption of an anechoic termination and various fabrics in front of the anechoic termination.



NRC of anechoic termination - 1.00

NRC of fabric in front of anechoic termination - .95

Performance



Colorfastness to Light (AATCC 16.3 Option 3)
Grade 4 min. at 40 hours



Colorfastness to Crocking (AATCC 8)
Grade 4 min. dry & Grade 3 min. wet



Breaking Strength (ASTM D5034)
150 lbf min. warp and fill



Flammability (ASTM E84)
Class 1 or A

Cleaning Code

Clean with water based cleaning agents, foam or pure, water free solvents. Vacuuming or light brushing is recommended to prevent dust and soil buildup.

Miscellaneous

Colors may vary between dye lots. This is non-directional fabric. Proudly woven in the USA supporting our local communities.



TerraTex is a registered trademark of Truex Textiles, Inc. and designates fabrics that are made from 100% recycled or compostable material using increasingly sustainable manufacturing practices to produce a high quality product that is recyclable at the end of its useful life.



CO₂ emissions from 100% of the electricity used by the manufacturer to produce this product have been measured and offset in accordance with The CarbonNeutral Protocol.



This pattern is included in the underwriters laboratory panel fabric recognition program. Additional testing of this U.L. recognized component fabric is not required on approved panels from participating manufacturers.



800.434.4610
claridgeproducts.com



FABRICORK
Color Options



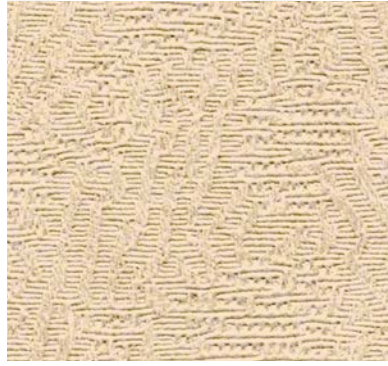
KE584 POWER

Claridge Fabricork Vinyl Bulletin Board is made of vinyl coated fabric that will wear almost indefinitely and stay new-looking for years. Fabricork is entirely washable. Spots and soil wash away with household soap and water.

Featuring Koroseal® Wallcovering
Manufactured by Koroseal Interior Products LLC

Please note minimal color variation may occur with each dye lot.

Viewpoint Pattern



KV216 ECRU



KV230 OYSTER



KV241 WHEAT STRAW



KV237 CURRY



KV233 DRIFTWOOD

Esquire Pattern



KE522 INNOCENT



KE592 GENTLEMAN GREY



KE510 RUNWAY



KE584 POWER



KE591 COUNSELOR

Linden Pattern



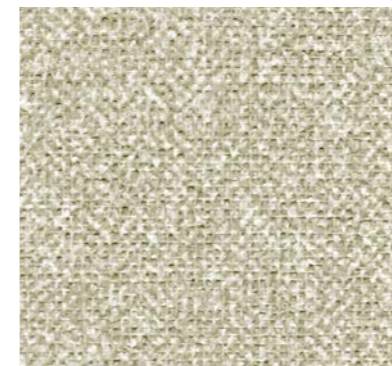
KL490 RECTORY



KL498 WINTHROPE



KL404 DORSET



KL483 DOWNING STONE



KL412 ANCESTRAL

Belair Pattern



KB290 STERLING



KB278 PACIFIC



KB661 DAWN



KB662 GREY



KB664 ANTIQUE



FEATURES

- Meets or exceeds Type 1 requirements in Federal Specification CCC-W-408A
- Manufactured with water based inks and coatings
- Has a water based acrylic top coat for improved cleanability
- Cadmium and Mercury Free
- Meets CA 01350 requirements
- Contains Early Warning Effect[®] Life Safety and Property Protection
- Can be supplied Micro-vented to reduce potential for mold and mildew growth

PATTERNS

- Viewpoint
- Esquire
- Linden
- Belair

PROPERTIES

| | |
|-----------------------|---|
| Total Weight | Viewpoint, Esquire and Linden - 21 oz/linear yd. Belair - 15 oz/linear yd. |
| Average Thickness | 0.017 to 0.021 in. |
| Tensile (typical) | Viewpoint, Esquire and Linden - 50 x 55 lbf minimum Belair - 30 x 30 lbf minimum |
| Tear (typical) | Viewpoint, Esquire and Linden - 25 x 25 minimum Belair - 12 x 12 minimum |
| ASTM E84 Test Results | Class A |
| Flame Spread | 25 or less |
| Smoke Developed | 50 or less |

Koroseal Interior Products LLC
Koroseal[®] Wallcovering • www.koroseal.com

Koroseal[®] and Early Warning Effectare[®]
trademarks and registered trademarks of
Koroseal Interior Products LLC.





TAN NUCORK BULLETIN BOARD SAMPLE



TAN NUCORK is a premium grade, fine grain natural tan composition cork. Nucork is dimensionally stable and has uniform density and particle size.

- An economical tackboard surface, Tan Nucork is pure grain natural cork without burlap backing
- Nucork has a smooth, resilient surface ideal for use with pins or thumbtacks
- 150 FR Nucork has a Class B fire rating based on ASTM E84 tunnel test as follows: flame spread – 65; smoke developed – 70. Meets military specification MIL-C-15116, Type II



800.434.4610
claridgeproducts.com



POWDER COATINGS

Color Guide



An environmentally friendly process that offers a wide range of decorative, functional colors for use on glass markerboards, walls, and metal frames.

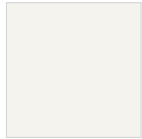
BENEFITS OF POWDER COATING

- More durable than baked enamels
- Delivers a brighter, smoother and cleaner finish
- Environmentally friendly, produces less hazardous waste than conventional liquid coatings
- Color choices are virtually unlimited with custom color matching

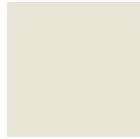
*Colors are reproduced with reasonable accuracy in standard Gloss finish unless noted Matte.
If match is critical, contact us at 800-434-4610 for actual samples*



Powder Coat Colors



RAL9016
Traffic White



RAL9002
Grey White



RAL9018
Papyrus White



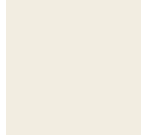
RAL7038
Agate Grey



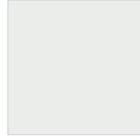
RAL7035
Light Grey



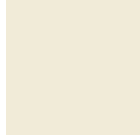
RAL7044
Silk Grey



RAL9010
Pure White



RAL9003
Signal White



RAL9001
Cream



RAL7047
Telegrey 4



RAL7036
Platinum Grey



RAL7045
Telegrey 1



RAL7032
Pebble Grey



RAL7033
Cement Grey



RAL7042
Traffic Grey A



RAL7004
Signal Grey



RAL7046
Telegrey 2



RAL7037
Dusty Grey



RAL7030
Stone Grey



RAL7034
Yellow Grey



RAL7005
Mouse Grey



RAL7040
Window Grey



RAL7012
Basalt Grey



RAL7043
Traffic Grey B



RAL7003
Moss Grey



RAL7013
Brown Grey



RAL7039
Quartz Grey



RAL7006
Beige Grey



RAL7000
Squirrel Grey



RAL7009
Green Grey



RAL7001
Silver Grey



RAL7010
Tarpaulin Grey



RAL7023
Concrete Grey



RAL7002
Olive Grey



RAL7022
Umbra Grey



RAL7011
Iron Grey



RAL6006
Grey Olive



RAL7008
Khaki Grey



RAL7016
Anthracite Grey



RAL7026
Granite Grey



RAL7024
Graphite Grey



RAL7021
Black Grey



RAL1013
Oyster White



RAL1015
Light Ivory



RAL1014
Ivory



RAL1000
Green Beige



RAL1001
Beige



RAL1011
Brown Beige



RAL1002
Sand Yellow



RAL1019
Grey Beige



RAL1020
Olive Yellow



RAL1024
Ochre Yellow



RAL1027
Curry



RAL1032
Broom Yellow



RAL1021
Yellow



RAL1018
Zinc Yellow



RAL1033
Dahlia Yellow



RAL2009
Traffic Orange



RAL2004
Pure Orange



RAL3004
Purple Red



RAL1016
Sulfur Yellow



RAL1012
Lemon Yellow



RAL1034
Pastel Yellow



RAL2010
Signal Orange



RAL2008
Bright Red Orange



RAL3005
Wine Red



RAL1028
Melon Yellow



RAL1023
Traffic Yellow



RAL2000
Yellow Orange



RAL2011
Deep Orange



RAL3002
Carmine Red



RAL3007
Black Red



RAL1003
Signal Yellow



RAL1017
Saffron Yellow



RAL2001
Red Orange



RAL2012
Salmon Orange



RAL3003
Ruby Red



RAL3009
Oxide Red



RAL1004
Golden Yellow



RAL1006
Maize Yellow



RAL2002
Vermilion



RAL3000
Flame Red



RAL3013
Tomato Red



RAL3011
Brown Red



RAL1005
Honey Yellow



RAL1007
Daffodil Yellow



RAL2003
Pastel Orange



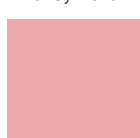
RAL3001
Signal Red



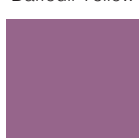
RAL3014
Antique Pink



RAL3012
Beige Red



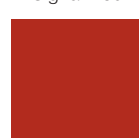
RAL3015
Light Pink



RAL4001
Red Lilac



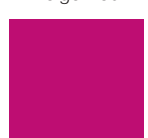
RAL4009
Pastel Violet



RAL3016
Coral Red



RAL4002
Red Violet



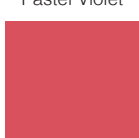
RAL4010
Telemagenta



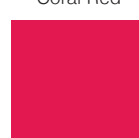
RAL4003
Heather Violet



RAL4005
Blue Lilac



RAL3017
Rose



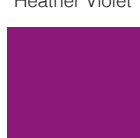
RAL3018
Strawberry Red



RAL3020
Traffic Red



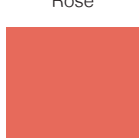
RAL4004
Claret Violet



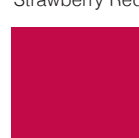
RAL4006
Traffic Purple



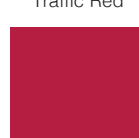
RAL4008
Signal Violet



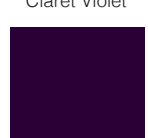
RAL3022
Salmon Pink



RAL3027
Raspberry Red



RAL3031
Orient Red



RAL4007
Purple Violet



RAL5024
Pastel Blue



RAL5007
Brilliant Blue



RAL5000
Violet Blue



RAL5009
Azure Blue



RAL5018
Turquoise Blue



RAL6001
Emerald Green



RAL5015
Sky Blue



RAL5023
Distant Blue



RAL5001
Green Blue



RAL5010
Gentian Blue



RAL5019
Capri Blue



RAL6002
Leaf Green



RAL5017
Traffic Blue



RAL5014
Pigeon Blue



RAL5002
Ultramarine Blue



RAL5011
Steele Blue



RAL5020
Ocean Blue



RAL6003
Olive Green



RAL5005
Signal Blue



RAL5012
Light Blue



RAL5003
Sapphire Blue



RAL5008
Grey Blue



RAL5021
Water Blue



RAL6004
Blue Green



RAL5013
Cobalt



RAL5022
Night Blue



RAL5004
Black Blue



RAL6000
Patina Green



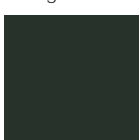
RAL6034
Pastel Turquoise



RAL6005
Moss Green



RAL6007
Bottle Green



RAL6015
Black Olive



RAL6024
Traffic Green



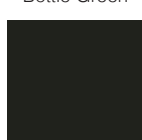
RAL6027
Light Green



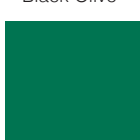
RAL6019
Pastel Green



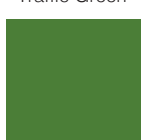
RAL6028
Pine Green



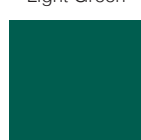
RAL6008
Brown Green



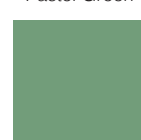
RAL6016
Turquoise Green



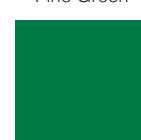
RAL6025
Fern Green



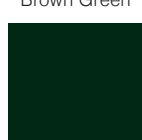
RAL6026
Opal Green



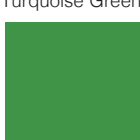
RAL6021
Pale Green



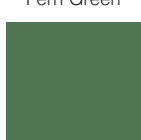
RAL6029
Mint Green



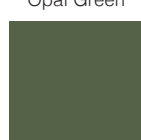
RAL6009
Fir Green



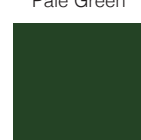
RAL6017
May Green



RAL6011
Reseda Green



RAL6013
Reed Green



RAL6020
Chrome Green



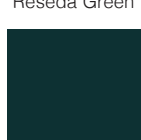
RAL6032
Signal Green



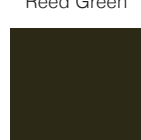
RAL6010
Grass Green



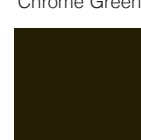
RAL6018
Yellow Green



RAL6012
Black Green



RAL6014
Yellow Olive



RAL6022
Olive Drab



RAL6033
Mint Turquoise



RAL8015
Chestnut Brown



RAL8012
Red Brown



RAL8024
Beige Brown



RAL8023
Orange Brown



RAL8002
Signal Brown



RAL8017
Chocolate Brown



RAL8019
Grey Brown



RAL9004
Signal Black



RAL8008
Olive Brown



RAL8003
Clay Brown



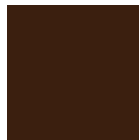
RAL8000
Green Brown



RAL8004
Copper Brown



RAL8016
Mahogany Brown



RAL8014
Sepia Brown



RAL8025
Pale Brown



RAL8001
Ocher Brown



RAL8007
Fawn Brown



RAL8022
Black Brown



RAL9005
Jet Black



RAL9011
Graphite Black



RAL8011
Nut Brown



RAL8028
Terra Brown

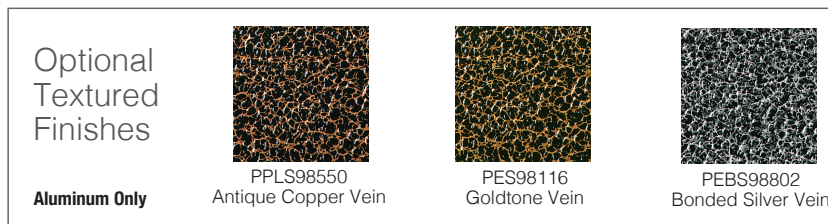
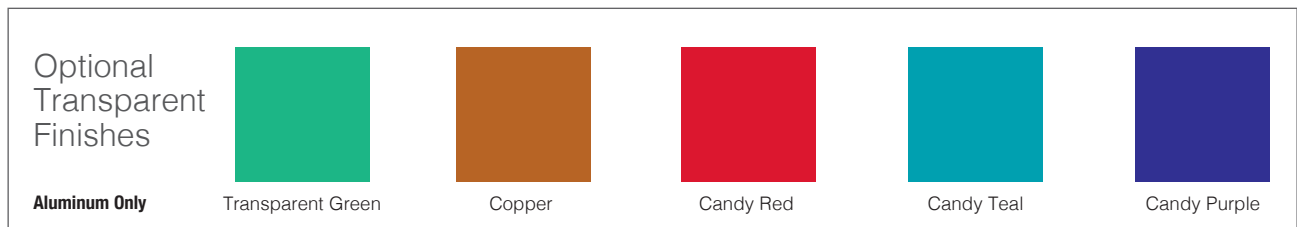


RAL9017
Traffic Black

Colors are reproduced with reasonable accuracy in standard Gloss finish unless noted Matte. If match is critical, contact us at 800-434-4610 for actual samples.

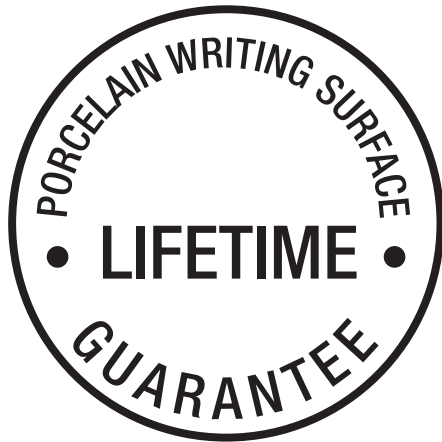
Standard Color Selections for Aluminum

Claridge offers the durability and brilliance of powder coat finishes for aluminum framed boards, mobile marker-boards cases, display cabinets and virtually any product offered with a metal or extruded aluminum component. Choose from any of the 24 standard colors shown below, or select from more than a 180 optional powder coat color examples inside – including textured and transparent finish choices.



800.434.4610
claridgeproducts.com

Claridge®



Under normal usage and maintenance, and when installed in accordance with manufacturer's instructions and recommendations, LCS Porcelain enamel steel markerboard and chalkboard writing surfaces are guaranteed for the Life of the Building.

Guarantee covers replacement of defective boards but does not include the cost of removal or re-installation.



Under normal usage and maintenance, Claridge products are guaranteed for one year.

This guarantee covers repair or replacement of the manufactured parts that fail in materials or workmanship within the specified warranty period. Guarantee covers replacement of defective parts only and does not include cost of removal or re-installation.



SCS Global Services does hereby certify that an independent assessment has been conducted on behalf of:

Claridge Products & Equipment

480 Wrangler Drive
Suite 200, Coppell, 75019, United States

For the following product(s):

See Addendum

The product(s) meet(s) all of the necessary qualifications to be certified for the following claim(s):

Indoor Advantage™ Gold

Indoor Air Quality Certified to SCS-105 v4.2

Conforms to the ANSI/BIFMA Furniture Emissions Standard (M7.1/X7.1-2011 R2021) and ANSI/BIFMA e.3-2019 (Credits 7.6.2, 7.6.3) for the open plan and (Credits 7.6.1, 7.6.2, 7.6.3) private office workstation parameters.¹ Also, conforms to the CDPH/EHLB Standard Method (CA 01350) v1.2-2017 for the open plan and school classroom parameters.¹

¹Modeled as Individual Furniture Components

Registration # SCS-IAQ-09072

Valid from: November 04, 2024 to June 08, 2025



INDOOR ADVANTAGE GOLD
FURNITURE



ANSI National Accreditation Board
ACCREDITED

ISO/IEC 17065
PRODUCT CERTIFICATION
BODY



Diana Kirsanova Phillips, Chief Assurance
Officer,
SCS Global Services

Certification Addendum

Claridge Products & Equipment

Certification: Registration # SCS-IAQ-09072 | Valid from: November 04, 2024 to June 08, 2025

Addendum Indoor Advantage™ Gold

Conformance: Indoor Air Quality Certified to SCS-105 v4.2

Conforms to the ANSI/BIFMA Furniture Emissions Standard (M7.1/X7.1-2011 R2021) and ANSI/BIFMA e.3-2019 (Credits 7.6.2, 7.6.3) for the open plan and (Credits 7.6.1, 7.6.2, 7.6.3) private office workstation parameters.¹ Also, conforms to the CDPH/EHLB Standard Method (CA 01350) v1.2-2017 for the open plan and school classroom parameters.¹

¹Modeled as Individual Furniture Components

Products:

Visual Display Boards:

3300 Series Tackboard, 3400 Series Tackboard, 344 Wave Lectern, 370 Series Recessed Display Case, 390 Large Door Recessed Display Case, 725 Folding Screen, 748 Universal Display Case, 79 Hang-Tight Rail System, 800 Series Markerboard, 800 Series Tackboard, 800 Series Type BR/BL Combo Markerboard Tackboard, 900A Tackboard, 94 Combination Map Rail & Clip Strip, Aceno Room Divider Panels-Base, Aceno Track System, Arise Marker Walls, Arise Markerboard, Aspire Markerboards, Claridge LCS Porcelain, Classic Series Bulletin Board Cabinet, Classic Series Display Case, Concept Markerboard, Concept Tackboard, Connect X2 3 Caster Mobile Markerboard, Connect X2 Combination Markerboard/Tackboard, Connect X2 Full Height Mobile Markerboard Porcelain-Glass, Connect X2 Markerboard Porcelain-Glass, Connect X2 Partial Height Markerboard, Connect X2 Space Creator Porcelain-Cork-Fabric, Connect X2 Tackboard, Contemporary Series Bulletin Board Cabinet, Contemporary Series Bulletin Board Cabinet, Contemporary Style Laminate Lecture Unit, Contio Mobile Markerboard, CS Clip Strips, Cursive Board, Cursive One Markerboard-Tackboard, Custom Printed Glass Boards, Deluxe Series Bulletin Board Cabinet, Deluxe Series Revolving Two-sided Mobile Markerboard, Deluxe Two-sided Mobile Markerboard, Display Case-Cabinet, Economy and Deluxe Map & Display Rail, Edify Mobile Markerboard, EDR Exhibit Rail, Envision Graphics Markerboard, Economy and Deluxe Map & Display Rail, Evolve Markerboard, Evolve Sliding System, Evolve Tackboard, EZ Fit Markerboard Panel, Framed Tackboard, Glass Marker Walls, Glass Markerboards, Horizontal Sliding Markerboards, Imperial Series Bulletin Board Cabinet, Large Contemporary Series Bulletin Board Cabinet, Large Format Glass Marker System, Large Format Porcelain Marker System, LCS Deluxe Markerboard-Aluminum Frame,

Certification Addendum **Claridge Products & Equipment**

Certification: Registration # SCS-IAQ-09072 | Valid from: November 04, 2024 to June 08, 2025

Addendum **Indoor Advantage™ Gold**

Conformance: Indoor Air Quality Certified to SCS-105 v4.2

Conforms to the ANSI/BIFMA Furniture Emissions Standard (M7.1/X7.1-2011 R2021) and ANSI/BIFMA e.3-2019 (Credits 7.6.2, 7.6.3) for the open plan and (Credits 7.6.1, 7.6.2, 7.6.3) private office workstation parameters.¹ Also, conforms to the CDPH/EHLB Standard Method (CA 01350) v1.2-2017 for the open plan and school classroom parameters.¹

¹Modeled as Individual Furniture Components

Products:

Visual Display Boards Continued:

LCS Deluxe Markerboard-Aluminum Frame No Map Rail, LCS Deluxe Markerboard-Wood Frame, LCS Elite Markerboard, LCS Select Markerboard, LCS Wall-Write Marker Wall, LCS-Glass Combo Boards, Magnetic Glass Markerboard, Magnetic Non-Glare Glass Markerboard, Marker Walls, Merit Series Markerboard, Mina Mobile, Mina Space Creator, Non-Magnetic Non-Glare Glass Markerboard, Premier Wall Mounted Display Case, Premiere Freestanding Display Case, Premiere Series Reversible Mobile Markerboard w/ aluminum trim, Profile Frameless LCS Porcelain Markerboard, Revere Series Bulletin Board, Revere Series Bulletin Board Cabinet, Ripple Space Divider Acoustic-Acrylic, Series 1 Markerboard, Series 1 Tackboard, Series 5 Markerboard, Series 5 Tackboard, Series 2 Markerboard, Series 2 Tackboard, Series 2500 Markerboard, Series 3 Markerboard, Series 3 Tackboard, Series 4 Markerboard, Series 4 Tackboard, Series 8 Markerboard, Series 8 Tackboard, Sliding Marker Wall Systems Porcelain-Glass, Switch Markerboard Porcelain-Glass, Switch Mobile Markerboard Porcelain-Glass, Tableau Markerboard Porcelain-Glass, Tableau Tackboard, Tack Wall, TacPads Acoustic Fabric-Wrapped, Trak-it-system, TrimLine Markerboard, Universal Series Bulletin Board Cabinet, Utility A-Frame Mobile Markerboard, Venue Markerboard Porcelain-Glass, Venue Space Divider Porcelain-Glass Acoustic, Venue T-Leg Mobile Markerboard porcelain-Glass, Venue V-Leg Mobile Markerboard Porcelain-Glass, Vertical Sliding Markerboards, Xchange Graphic Board

Excludes products with wood trim. Excludes products manufactured with a cork substrate. Tackboard included are constructed with a fabricork or designer fabric over Duracore or Micore.