

Vertical Sliding System

Floor and Wall-Mounted Sliding Boards



Vertical Sliding Units are custom-built visual communication solutions, providing optimum display surfaces within easy reach for teaching, conferences, and training. The sliding panels and fixed back panels can be LCS Porcelain dry erase markerboard or chalkboard. Mounted on wall or from the floor, panels slide from the sill or tray to top of unit or from the floor to top for floor mounted units. Balanced, lightweight panel construction provides rigidity and eliminates to and fro movement when panels are in use.

- One, two, or three sliding panels
- Magnetic surface
- Resists humidity and fading; won't ghost or stain
- SCS Indoor Advantage Gold certified

Vertical Sliding System

Floor and Wall-Mounted Sliding Boards



SPECIFICATIONS

- Manually or motor operated
- Fixed back panel with 1, 2, or 3 sliding panels and tracks
- Housing, trim and panel edging are extruded aluminum with clear anodized finish; powder coat finish optional
- Sizes for floor mounted available from 10' x 4' to 10' x 16'; wall mounted from 8' x 4' to 8' x 16'; motor operated available for floor mounted only

Claridge LCS Porcelain

- Projection friendly surface that won't ghost or stain
- Accepts magnetic accessories
- LCS Porcelain is SCS Indoor Advantage Gold certified, eco-friendly, and emits no VOC's
- Lifetime warranty

[View Porcelain Highlights HERE](#)

COLORS

- 4 markerboard colors
- 3 chalkboard colors

[View Claridge LCS Porcelain Colors HERE](#)

[LEARN MORE](#)

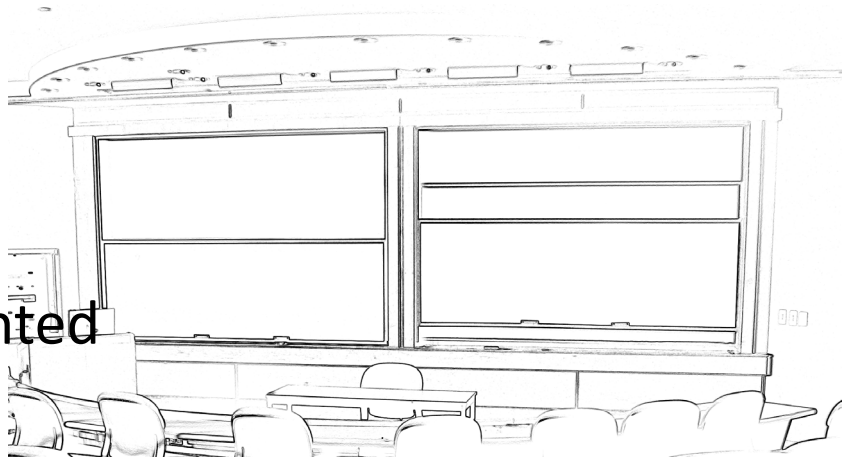


800-434-4610
claridgeproducts.com

V082423



Vertical Sliding System Floor/Wall-Mounted Boards



INSTALLATION INSTRUCTIONS

Parts Layout Identification

The vertical sliding unit is shipped knocked down in the following components:

- Item 1 Top section (head housing with snap front access cover)
- Item 2 Left hand side housing (snap front access cover)
- Item 3 Right hand side housing (snap front access cover)
- Item 4 Fixed back panel
- Item 5 Fixed back panel divider joint (See catalog for maximum board lengths.)
- Item 6 Fixed back panel trim
- Item 7 Sliding panels (counterweight cables attached)
- Item 8 Bottom Sill (Accessory tray assembly, if required, mounted to bottom sill)
- Item 9 Counterweight (2 per sliding panel)
- Item 10 Necessary hardware package – includes: screws, rubber bumpers, cable clamps, etc.

Note: Claridge recommends general maintenance of the cable system. At least annually, depending on usage, we suggest the use of a high end wire rope spray lubricant to be sprayed on all visible cabling. Lubricants are available at most hardware stores.

WARNING

Risk of injury to installers and users

Read the entire assembly directions before beginning assembly.

Vertical Sliding Unit Wall-Mounted Boards

Installation Instructions

Note: Access covers ship installed on head housing and uprights. To remove access covers, first remove screws. Then, starting at one end, pry up access cover, taking care not to damage the face of the upright or head housing. (Use non-marring device.)

Note: One-track vertical has screw-on access cover, not snap on. Once an end is raised, continue to apply leverage the length of the upright. Rotate out to “un-lock” snap mechanism. Remove weight divider(s).

1. Mount bottom sill, Item 8, at desired height, making sure sill is level. Toenail to wall using pre-drilled holes and appropriate anchors.
2. Install top and side housing, items 1, 2, and 3, using enough screws to only temporarily install either the right or left side housing. Side housing must be installed plumb. Width dimension between right and left side housings must not vary more than 1/16” from top to bottom of unit. Blocking may be necessary to support bottom sill prior to removing upright in Step 4. (For motorized units, run wiring from jamb through rubber grommets in head housing.)
3. Drill through top holes of the bottom sill into angles of the upright and insert screws on one side only. (Screws included in hardware package. If installing a motorized unit, installing the right side first would be preferable.) The other side will be installed later.
4. Remove side housing that was temporarily installed in Step 2. (If unit is motorized, remove left side housing as wiring is housed in right side.)
5. Using adhesive, install fixed back panel, Item 4, positioning panel against upright allowing approximately 1/8” clearance at top and bottom. Add divider joint, Item 5, if required, screwing back leg of joint to wall using countersink screws. This insures that back panel snugs against wall and does not interfere with movement of the sliding panel(s). Then install back panel trim, Item 6.
6. Install sliding panels, Item 7, in the following manner:
 - a. Insert right or left edge of sliding panel into track at side housing, taking necessary precaution to protect the limit switches inside the housing.
 - b. Permanently reinstall side housing which was removed in Step 2, inserting edge of side housing track around edge of sliding panel. (Note: Enough clearance must be maintained between the edges of the sliding panel and side housing for the panel to move freely.)
 - c. See notes for threading cables and cable travel layout.
 - d. Create a loop in the cable using cable clamps (two clamps per cable). Loop should be approx. 1- to 2-inch in diameter. Add spring clip. Attach counterweights, Item 12, to spring clip. Top cable clamp should be approx. 2” below the head. Make sure cable is on pulleys in top section. See cable travel layout detail.
 - e. After weights are installed, push panel all the way to top to insure panel ‘tracks’ evenly. Repeat with next panel. Note: Prior to replacing weight cover, test the sliding panel to make sure weight doesn’t hit at the bottom or top. Once test is complete, weight cover and access cover should be replaced. (If unit is motorized, be sure to connect wiring from jamb to head by connecting color coded wires. Colors must match.)
 - f. With sliding panel raised, drill through the top hole of the bottom sill on the side temporarily installed in Step 3.

Note: There is approximately 2-1/2 lbs. of counterweight material at the top of each counterweight that is removable. At the time of shipment the unit is perfectly counter-balanced at the factory. After a period of time, if the unit should need to be re-balanced, this can be done by removing the necessary amount of counterweight material (removing the same amount from both right and left counterweights).



800-434-4610
claridgeproducts.com

Vertical Sliding Unit Floor-Mounted Boards

Installation Instructions

Note: Access covers ship installed on head housing and uprights. To remove access covers, first remove screws. Then, starting at one end, pry up access cover, taking care not to damage the face of the upright or head housing. (Use non-marring device.)

Note: One-track vertical has screw-on access cover, not snap on. Once an end is raised, continue to apply leverage the length of the upright. Rotate out to “un-lock” snap mechanism. Remove weight divider(s).

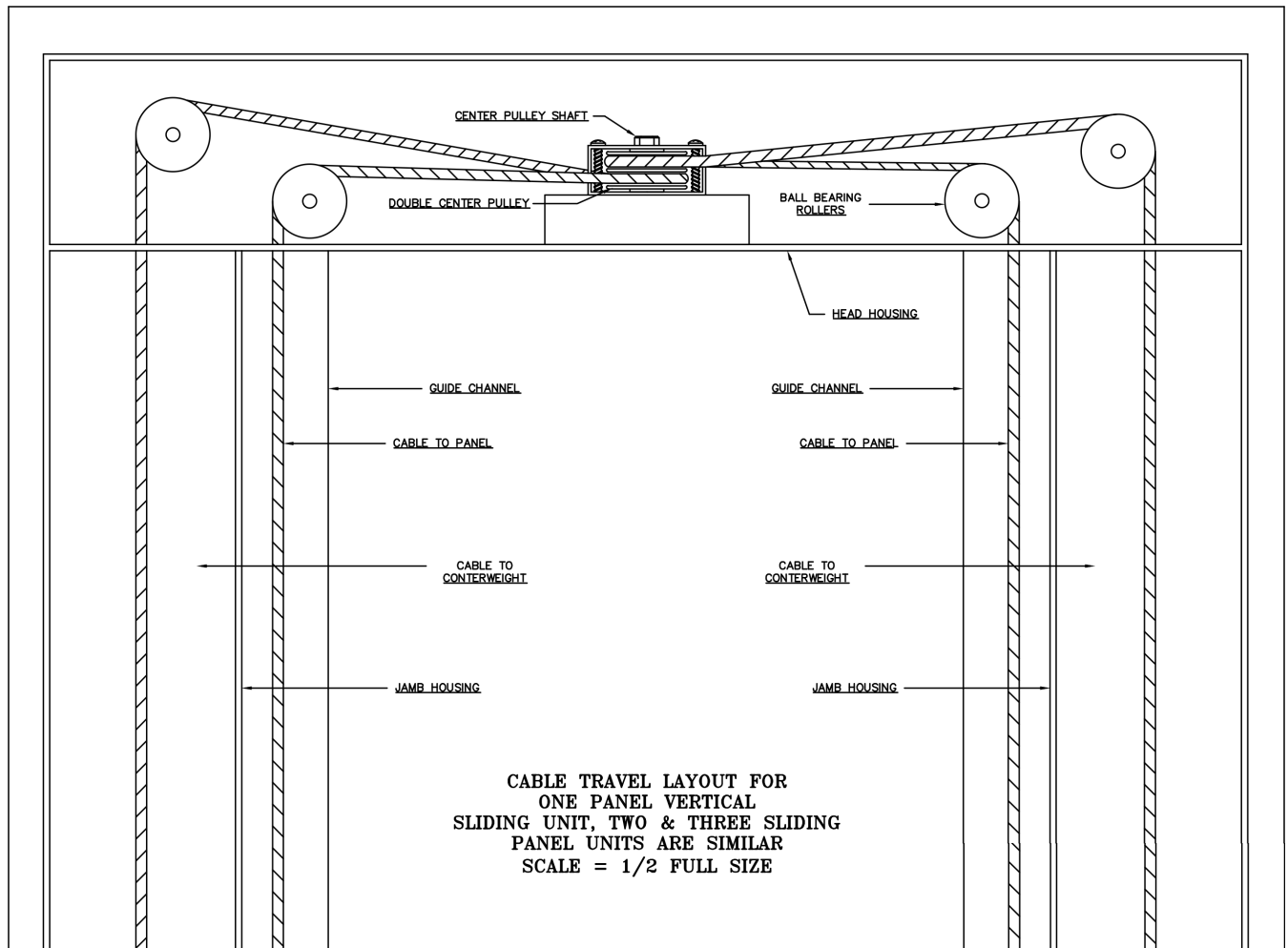
1. Permanently mount 1 side and the head. Then use enough screws to temporarily mount the other upright. (The uprights must be plumb with the head.)
2. Remove side housing that was temporarily installed in Step 2. (If unit is motorized, remove left side housing as wiring is housed in right side.)
3. Using adhesive, install fixed back panel, Item 4, positioning panel against upright allowing approximately 1/8” clearance at top and bottom. Add divider joint, Item 5, if required, screwing back leg of joint to wall using countersink screws. This insures that back panel snugs against wall and does not interfere with movement of the sliding panel(s). Then install back panel trim, Item 6.
4. Install sliding panels, Item 7, in the following manner:
 - a. Insert right or left edge of sliding panel into track at side housing, taking necessary precaution to protect the limit switches inside the housing.
 - b. Permanently reinstall side housing which was removed in Step 2, inserting edge of side housing track around edge of sliding panel. (Note: Enough clearance must be maintained between the edges of the sliding panel and side housing for the panel to move freely.)
 - c. See notes for threading cables and cable travel layout.
 - d. Create a loop in the cable using cable clamps (two clamps per cable). Loop should be approx. 1- to 2-inch in diameter. Add spring clip. Attach counterweights, Item 12, to spring clip. Top cable clamp should be approx. 2” below the head. Make sure cable is on pulleys in top section. See cable travel layout detail.
 - e. After weights are installed, push panel all the way to top to insure panel ‘tracks’ evenly. Repeat with next panel. Note: Prior to replacing weight cover, test the sliding panel to make sure weight doesn’t hit at the bottom or top. Once test is complete, weight cover and access cover should be replaced. (If unit is motorized, be sure to connect wiring from jamb to head by connecting color coded wires. Colors must match.)
5. Place the tray on the angles mounted on the uprights. Drill through the holes on the ends of the tray and secure with the appropriate screws.

Note: There is approximately 2-1/2 lbs. of counterweight material at the top of each counterweight that is removable. At the time of shipment the unit is perfectly counter-balanced at the factory. After a period of time, if the unit should need to be re-balanced, this can be done by removing the necessary amount of counterweight material (removing the same amount from both right and left counterweights).



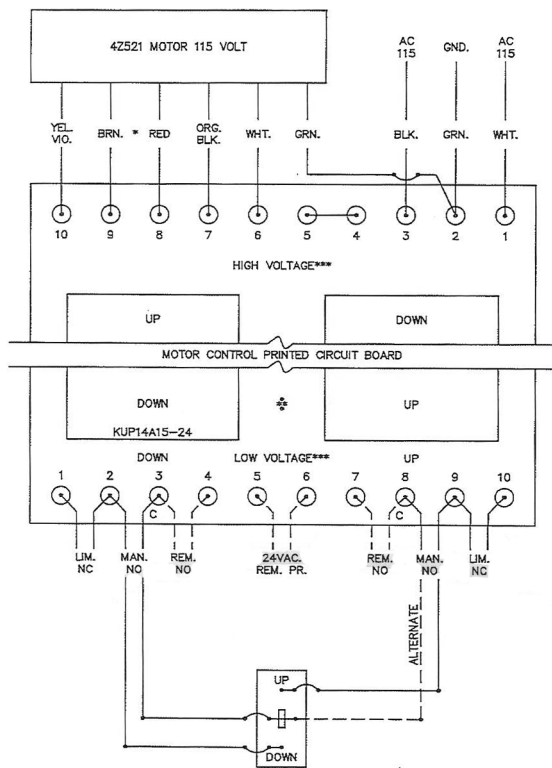
800-434-4610
claridgeproducts.com

Vertical Sliding Unit Cable Travel Layout



800-434-4610
claridgeproducts.com

Vertical Sliding Unit Motor Switch



NOTE

All electrical work should be performed by a licensed electrician for proper motor switch installation.

HIGH VOLTAGE TERMINALS (115 VAC LEVELS) MAY BE IDENTIFIED BY RED JUMPER WIRES ON THE PRINTED CIRCUIT BOARD & POWER RELAYS LOCATED APPROX. 1 1/4" FROM TERMINALS. USE CAUTION WHEN CONNECTING MOTOR AND 115 VAC TO HIGH VOLTAGE TERMINALS. INSURE THAT THE GROUND FROM THE AC SOURCE, PRINTED CIRCUIT BOARD (TERMINAL 2) & MOTOR FRAME ARE SECURE BEFORE OPERATING OR TESTING UNIT.

115 VAC POWER IS SUPPLIED TO PRINTED CIRCUIT BOARD & MOTOR TERM. 1 & 3. MOTOR POWER & DIRECTION IS SUPPLIED ON TERMINALS 6 & 10. TERMINALS 4 & 5 ARE TIED TOGETHER BUT NOT CONNECTED TO THE PRINTED CIRCUIT BOARD. DIRECTION OF MOTOR MAY BE REVERSED BY INTERCHANGING BROWN & RED MOTOR LEADS ON HIGH VOLTAGE TERMINALS 8 & 9. STAND BY POWER IS LESS THAN 10 WATTS. FULL LOAD POWER IS LESS THAN 150 WATTS. THE MOTOR IS RATED 1/15TH HORSEPOWER.

LOW VOLTAGE TERMINALS (24 VAC LEVEL) MAY BE IDENTIFIED BY YELLOW JUMPER WIRES ON THE PRINTED CIRCUIT BOARD & CONTROL RELAYS LOCATED APPROX. 1/2" FROM TERMINALS. ALL CONTROL VOLTAGES LOCATED ON THE LOW UP CONTROLS ARE TERMINALS 7 THRU 10. OPTIONAL WIRELESS REMOTE CONTROL MODULE CONNECTS TO TERMINALS 3 THRU 8.

UNIT SWITCHED ARE NC CONTACTS ON TERMINALS 1 & 2, 9 & 10 MANUAL UP & DOWN, SWITCHES ARE NO CONTACT ON TERMINALS 2 & 3, 8 & 9. CONTACT CURRENT IS LESS THAN 1 AMP AT 24 VAC. TERMINALS 3 & 5 ARE CONNECTED AND MAY BE USED AS COMMON TO MANUAL UP-DOWN SWITCH. OPTIONAL WIRELESS REMOVE CONTROLS UP-DOWN SWITCHES ARE NO CONTACT ON TERMINALS 3 & 4, 7 & 8 WITH POWER FROM TERMINALS 5 & 6.

ALL RELAYS ARE POTTER-BRUMFIELD #KVP14A15-24. THE MOTOR IS GRAINGER #42521 PERM SPLIT PHASE MOTOR WIRED FOR 115/120 VAC. 50-60 HZ.

WIRES TO UNIT SWITCHES ARE COLOR CODED AND MUST MATCH.

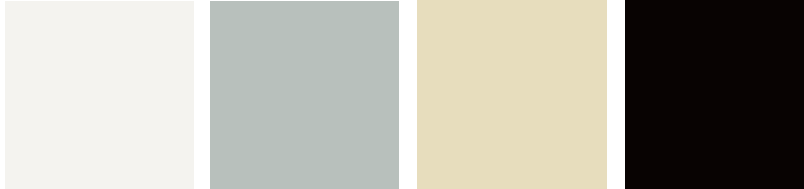


800-434-4610
claridgeproducts.com



Standard Color Selections

LCS Porcelain Colors - use with markers



100 White

101 Light Gray

102 Beige

103 Black

Chalkboard Colors - use with chalk



500 Green

501 Black

502 Gray

Claridge LCS Porcelain enamel steel markerboard and chalkboard writing surfaces offer unsurpassed durability and performance – a lifetime of performance.

An environmentally friendly process that offers a wide range of decorative and functional colors for use on porcelain markerboards and walls.

- Smooth writing and clean erasing
- Unmatched scratch and stain resistance
- 100% non-combustible surface
- Magnetic surface
- Projection-friendly low gloss LCS surface
- Life of the Building Guarantee
- LCS Porcelain surface is SCS Indoor Advantage Certified

Colors are reproduced with reasonable accuracy, and are for color identification purposes only. If color is critical, contact us at 800-434-4610 to request an actual color sample.





LCS PORCELAIN Markerboard and Chalkboard Features

ENVIRONMENTAL FEATURES

- **SCS Indoor Advantage Certified**

SCS Indoor Advantage certifications are product certification programs for low emitting interior building materials, furnishings and finish systems. SCS Indoor Advantage certified products undergo rigorous testing and must meet stringent standards for low chemical emissions based on established health standards for use in environments such as schools and healthcare facilities.

- **Cradle-to-Cradle™ Bronze Certification**

Cradle-to-Cradle Certification focuses on the characteristics of sustainable materials, products, and systems. The process places emphasis on the human and ecological health impacts of a product's ingredients, and on the ability of that product to be recycled or composted.

Third-party environmental certification assures customers and end users that products selected support healthy indoor air quality and do not emit harmful chemicals. LCS is non-combustible, gives off no toxic gases and is 99.9% recyclable.

CLEANING INSTRUCTIONS

Claridge LCS Porcelain® enamel steel surfaces are guaranteed to withstand the rigors of everyday use. Proper use and maintenance will ensure performance and keep LCS Porcelain markerboards and chalkboards looking like new. Visit claridgeproducts.com for complete cleaning and maintenance instructions.

WRITING SURFACE WARRANTY

Claridge LCS Porcelain enamel steel markerboard and chalkboard writing surfaces offer unsurpassed durability and performance – a lifetime of performance. We are so confident in the quality and dependability of our LCS Porcelain surfaces that we Guarantee it for the Life of the Building!

SPECIFICATION

Claridge markerboard and chalkboard surfaces are manufactured in accordance with PEI-1002 Manual and Performance Specifications for LCS Porcelain Enamel Writing Surfaces. The writing surface is made from steel covered on both sides with enamel coatings. Fusion bonded to the steel, the resulting LCS Porcelain surface is smooth, durable and abrasion-resistant providing the best dry-erase surface available.



800.434.4610
claridgeproducts.com



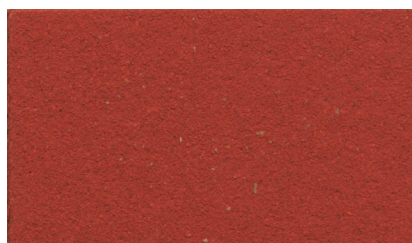
CLARIDGE CORK
Color Guide



NO. 1108 MUSHROOM



NO. 1103 OYSTER



NO. 1117 SALSA



NO. 1109 BUFF



NO. 1111 SMOKE



NO. 1118 TANGERINE



NO. 1110 FAWN



NO. 1113 STEEL GRAY



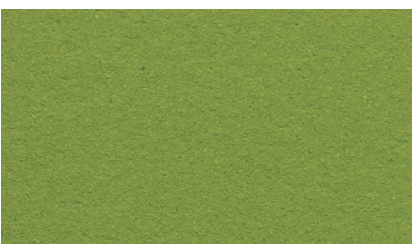
NO. 1119 PINEAPPLE



NO. 1100 TAN



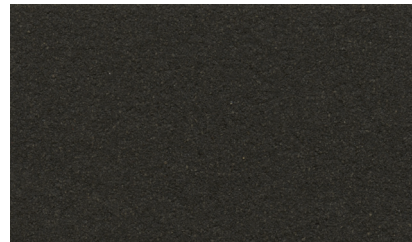
NO. 1136 GRAPHITE



NO. 1120 LETTUCE



NO. 1104 CINNAMON



NO. 1132 BLACK



NO. 1129 BLUEBERRY

Note: Color may vary slightly from samples.



PRODUCT DESCRIPTION

Claridge Cork is made from pure, natural ingredients including linseed oil, pine resin, cork and pigments that are calendared onto a jute backing to create a smooth, suede-like surface of unsurpassed beauty and exceptional durability.

FEATURES

- Environmentally friendly
- Tacks insert easily, are gripped firmly
- Does not crack, peel or crumble
- Washable stain-resistant finish
- Expanded color range - 15 harmonizing colors
- Dimensionally stable
- Meets ASTM E-84, NFPA 258 (fuel contribution) - Class B, and NFPA 255 (critical radiant flux) - Class II
- No toxins - no harmful by-products or emissions
- Low light reflectance
- Naturally inhibits bacterial growth

Note: Features referenced above reflect characteristics of the cork surface only.



Guilford of Maine® FR701®
TACKBOARD FABRICS



1686 Dark Pearl

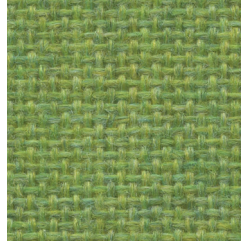
1691 Quartz



1683 Silver

1692 Wheat

1681 Cement Mix

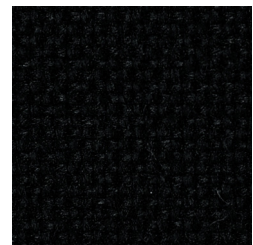
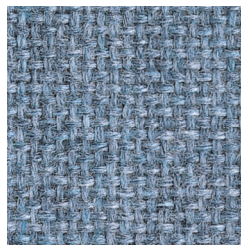


1690 Grey Mix

1680 Lime

1693 Sunshine

1679 Cardinal



1685 Flannel

1689 Wedgewood

1688 Cobalt

1684 Noir

Please note minimal color shade variations may occur from one dye lot to another.

TACKBOARD FABRICS

FR701® 2100

Specifications

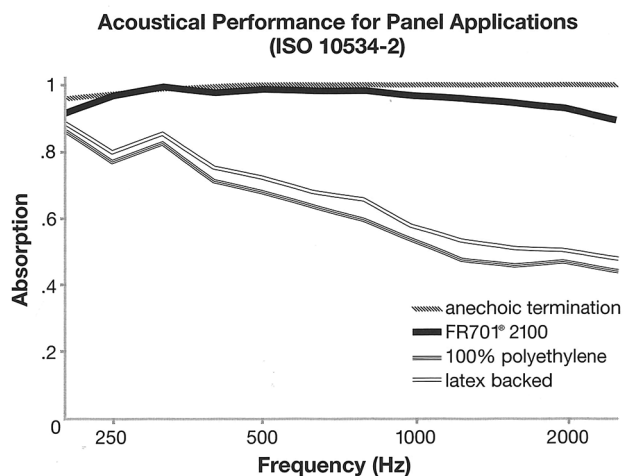
Content 100% post-consumer recycled polyester

Weight 16.0 ± 0.5 oz./lin. yd.

Width 66" min. usable

Acoustical Performance

The plot below summarizes impedance tube measurements of absorption of an anechoic termination and various fabrics in front of the anechoic termination.



NRC of anechoic termination - 1.00

NRC of fabric in front of anechoic termination- .95

Performance



Colorfastness to Light (AATCC 16.3 Option 3)
Grade 4 min. at 40 hours



Colorfastness to Crocking (AATCC 8)
Grade 4 min. dry & Grade 3 min. wet



Breaking Strength (ASTM D5034)
150 lbf min. warp and fill



Flammability (ASTM E84)
Class 1 or A

Cleaning Code

Clean with water based cleaning agents, foam or pure, water free solvents. Vacuuming or light brushing is recommended to prevent dust and soil buildup.

Miscellaneous

Colors may vary between dye lots. This is non-directional fabric. Proudly woven in the USA supporting our local communities.



Terratec is a registered trademark of Trus Textiles, Inc. and designates fabrics that are made from 100% recycled or compostable material using increasingly sustainable manufacturing practices to produce a high quality product that is recyclable at the end of its useful life.



CO₂ emissions from 100% of the electricity used by the manufacturer to produce this product have been measured and offset in accordance with The CarbonNeutral Protocol.



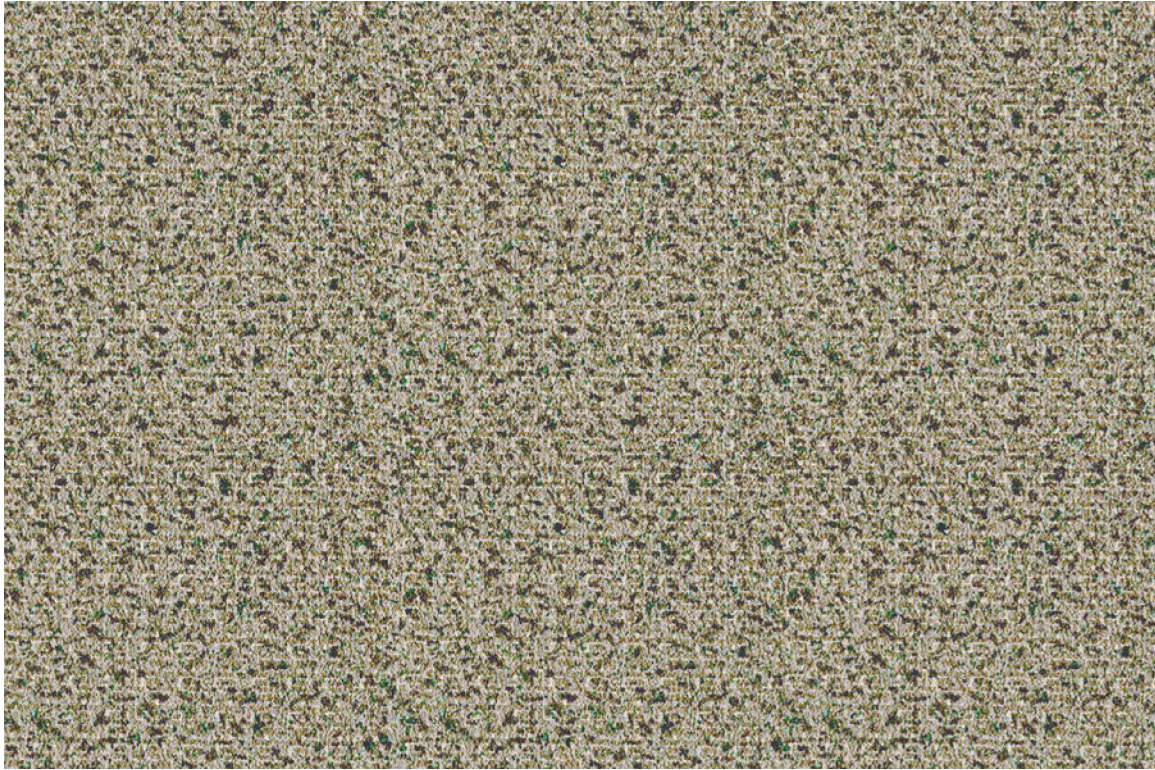
This pattern is included in the underwriters laboratory panel fabric recognition program. Additional testing of this U.L. recognized component fabric is not required on approved panels from participating manufacturers.



800.434.4610
claridgeproducts.com



FABRICORK
Color Options



KE584 POWER

Claridge Fabricork Vinyl Bulletin Board is made of vinyl coated fabric that will wear almost indefinitely and stay new-looking for years. Fabricork is entirely washable. Spots and soil wash away with household soap and water.

Featuring Koroseal® Wallcovering
Manufactured by Koroseal Interior Products LLC

Please note minimal color variation may occur with each dye lot.

Viewpoint Pattern



KV216 ECRU



KV230 OYSTER



KV241 WHEAT STRAW



KV237 CURRY



KV233 DRIFTWOOD

Esquire Pattern



KE522 INNOCENT



KE592 GENTLEMAN GREY



KE510 RUNWAY



KE584 POWER



KE591 COUNSELOR

Linden Pattern



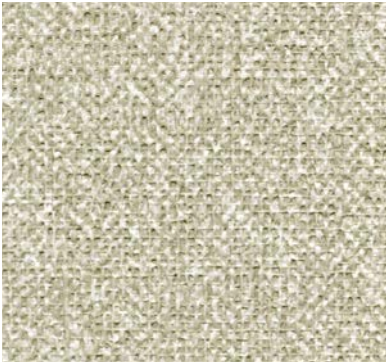
KL490 RECTORY



KL498 WINTHROPE



KL404 DORSET

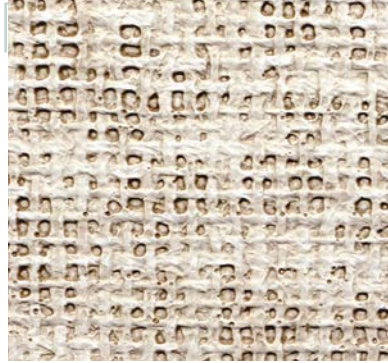


KL483 DOWNING STONE



KL412 ANCESTRAL

Belair Pattern



KB290 STERLING



KB278 PACIFIC



KB661 DAWN



KB662 GREY



KB664 ANTIQUE



FEATURES

- Meets or exceeds Type 1 requirements in Federal Specification CCC-W-408A
- Manufactured with water based inks and coatings
- Has a water based acrylic top coat for improved cleanability
- Cadmium and Mercury Free
- Meets CA 01350 requirements
- Contains Early Warning Effect® Life Safety and Property Protection
- Can be supplied Micro-vented to reduce potential for mold and mildew growth

PATTERNS

- Viewpoint
- Esquire
- Linden
- Belair

PROPERTIES

| | |
|-----------------------|---|
| Total Weight | Viewpoint, Esquire and Linden - 21 oz/linear yd. Belair - 15 oz/linear yd. |
| Average Thickness | 0.017 to 0.021 in. |
| Tensile (typical) | Viewpoint, Esquire and Linden - 50 x 55 lbf minimum Belair - 30 x 30 lbf minimum |
| Tear (typical) | Viewpoint, Esquire and Linden - 25 x 25 minimum Belair - 12 x 12 minimum |
| ASTM E84 Test Results | Class A |
| Flame Spread | 25 or less |
| Smoke Developed | 50 or less |

Koroseal Interior Products LLC
Koroseal® Wallcovering • www.koroseal.com

Koroseal® and Early Warning Effectare®
trademarks and registered trademarks of
Koroseal Interior Products LLC.





POWDER COATINGS

Color Guide



An environmentally friendly process that offers a wide range of decorative, functional colors for use on glass markerboards, walls, and metal frames.

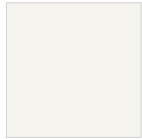
BENEFITS OF POWDER COATING

- More durable than baked enamels
- Delivers a brighter, smoother and cleaner finish
- Environmentally friendly, produces less hazardous waste than conventional liquid coatings
- Color choices are virtually unlimited with custom color matching

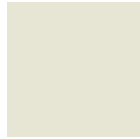
*Colors are reproduced with reasonable accuracy in standard Gloss finish unless noted Matte.
If match is critical, contact us at 800-434-4610 for actual samples*



Powder Coat Colors



RAL9016
Traffic White



RAL9002
Grey White



RAL9018
Papyrus White



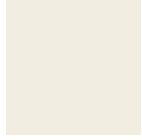
RAL7038
Agate Grey



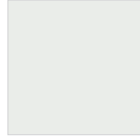
RAL7035
Light Grey



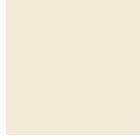
RAL7044
Silk Grey



RAL9010
Pure White



RAL9003
Signal White



RAL9001
Cream



RAL7047
Telegrey 4



RAL7036
Platinum Grey



RAL7045
Telegrey 1



RAL7032
Pebble Grey



RAL7033
Cement Grey



RAL7042
Traffic Grey A



RAL7004
Signal Grey



RAL7046
Telegrey 2



RAL7037
Dusty Grey



RAL7030
Stone Grey



RAL7034
Yellow Grey



RAL7005
Mouse Grey



RAL7040
Window Grey



RAL7012
Basalt Grey



RAL7043
Traffic Grey B



RAL7003
Moss Grey



RAL7013
Brown Grey



RAL7039
Quartz Grey



RAL7006
Beige Grey



RAL7000
Squirrel Grey



RAL7009
Green Grey



RAL7001
Silver Grey



RAL7010
Tarpaulin Grey



RAL7023
Concrete Grey



RAL7002
Olive Grey



RAL7022
Umbra Grey



RAL7011
Iron Grey



RAL6006
Grey Olive



RAL7008
Khaki Grey



RAL7016
Anthracite Grey



RAL7026
Granite Grey



RAL7024
Graphite Grey



RAL7021
Black Grey



RAL1013
Oyster White



RAL1015
Light Ivory



RAL1014
Ivory



RAL1000
Green Beige



RAL1001
Beige



RAL1011
Brown Beige



RAL1002
Sand Yellow



RAL1019
Grey Yellow



RAL1020
Olive Yellow



RAL1024
Ochre Yellow



RAL1027
Curry



RAL1032
Broom Yellow

| | | | | | |
|---|---|---|---|---|---|
|  |  |  |  |  |  |
| RAL1021 Yellow | RAL1018 Zinc Yellow | RAL1033 Dahlia Yellow | RAL2009 Traffic Orange | RAL2004 Pure Orange | RAL3004 Purple Red |
|  |  |  |  |  |  |
| RAL1016 Sulfur Yellow | RAL1012 Lemon Yellow | RAL1034 Pastel Yellow | RAL2010 Signal Orange | RAL2008 Bright Red Orange | RAL3005 Wine Red |
|  |  |  |  |  |  |
| RAL1028 Melon Yellow | RAL1023 Traffic Yellow | RAL2000 Yellow Orange | RAL2011 Deep Orange | RAL3002 Carmine Red | RAL3007 Black Red |
|  |  |  |  |  |  |
| RAL1003 Signal Yellow | RAL1017 Saffron Yellow | RAL2001 Red Orange | RAL2012 Salmon Orange | RAL3003 Ruby Red | RAL3009 Oxide Red |
|  |  |  |  |  |  |
| RAL1004 Golden Yellow | RAL1006 Maize Yellow | RAL2002 Vermilion | RAL3000 Flame Red | RAL3013 Tomato Red | RAL3011 Brown Red |
|  |  |  |  |  |  |
| RAL1005 Honey Yellow | RAL1007 Daffodil Yellow | RAL2003 Pastel Orange | RAL3001 Signal Red | RAL3014 Antique Pink | RAL3012 Beige Red |
|  |  |  |  |  |  |
| RAL3015 Light Pink | RAL4001 Red Lilac | RAL4009 Pastel Violet | RAL3016 Coral Red | RAL4002 Red Violet | RAL4010 Telemagenta |
|  |  |  |  |  |  |
| RAL4003 Heather Violet | RAL4005 Blue Lilac | RAL3017 Rose | RAL3018 Strawberry Red | RAL3020 Traffic Red | RAL4004 Claret Violet |
|  |  |  |  |  |  |
| RAL4006 Traffic Purple | RAL4008 Signal Violet | RAL3022 Salmon Pink | RAL3027 Raspberry Red | RAL3031 Orient Red | RAL4007 Purple Violet |



RAL5024
Pastel Blue



RAL5007
Brilliant Blue



RAL5000
Violet Blue



RAL5009
Azure Blue



RAL5018
Turquoise Blue



RAL6001
Emerald Green



RAL5015
Sky Blue



RAL5023
Distant Blue



RAL5001
Green Blue



RAL5010
Gentian Blue



RAL5019
Capri Blue



RAL6002
Leaf Green



RAL5017
Traffic Blue



RAL5014
Pigeon Blue



RAL5002
Ultramarine Blue



RAL5011
Steele Blue



RAL5020
Ocean Blue



RAL6003
Olive Green



RAL5005
Signal Blue



RAL5012
Light Blue



RAL5003
Sapphire Blue



RAL5008
Grey Blue



RAL5021
Water Blue



RAL6004
Blue Green



RAL5013
Cobalt



RAL5022
Night Blue



RAL5004
Black Blue



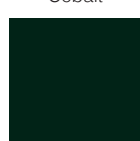
RAL6000
Patina Green



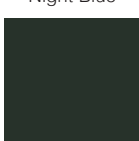
RAL6034
Pastel Turquoise



RAL6005
Moss Green



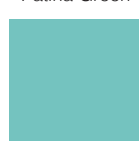
RAL6007
Bottle Green



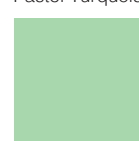
RAL6015
Black Olive



RAL6024
Traffic Green



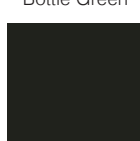
RAL6027
Light Green



RAL6019
Pastel Green



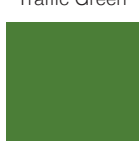
RAL6028
Pine Green



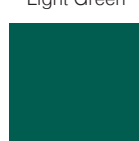
RAL6008
Brown Green



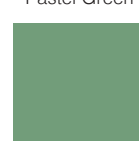
RAL6016
Turquoise Green



RAL6025
Fern Green



RAL6026
Opal Green



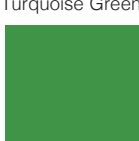
RAL6021
Pale Green



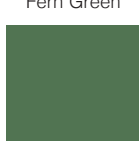
RAL6029
Mint Green



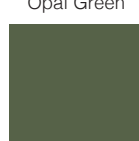
RAL6009
Fir Green



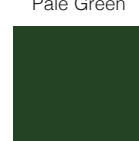
RAL6017
May Green



RAL6011
Reseda Green



RAL6013
Reed Green



RAL6020
Chrome Green



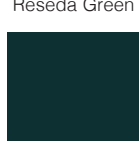
RAL6032
Signal Green



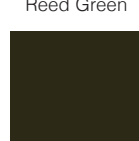
RAL6010
Grass Green



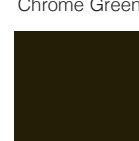
RAL6018
Yellow Green



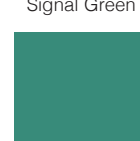
RAL6012
Black Green



RAL6014
Yellow Olive



RAL6022
Olive Drab



RAL6033
Mint Turquoise

| | | | | |
|--|--|--|---|---|
|  |  |  |  |  |
| RAL8015 Chestnut Brown | RAL8012 Red Brown | RAL8024 Beige Brown | RAL8023 Orange Brown | RAL8002 Signal Brown |
|  |  |  |  |  |
| RAL8017 Chocolate Brown | RAL8019 Grey Brown | RAL9004 Signal Black | RAL8008 Olive Brown | RAL8003 Clay Brown |
|  |  |  |  |  |
| RAL8000 Green Brown | RAL8004 Copper Brown | RAL8016 Mahogany Brown | RAL8014 Sepia Brown | RAL8025 Pale Brown |
|  |  |  |  |  |
| RAL8001 Ocher Brown | RAL8007 Fawn Brown | RAL8022 Black Brown | RAL9005 Jet Black | RAL9011 Graphite Black |
|  |  |  | | |
| RAL8011 Nut Brown | RAL8028 Terra Brown | RAL9017 Traffic Black | | |

Colors are reproduced with reasonable accuracy in standard Gloss finish unless noted Matte. If match is critical, contact us at 800-434-4610 for actual samples.

Standard Color Selections for Aluminum

Claridge offers the durability and brilliance of powder coat finishes for aluminum framed boards, mobile marker-boards cases, display cabinets and virtually any product offered with a metal or extruded aluminum component. Choose from any of the 24 standard colors shown below, or select from more than a 180 optional powder coat color examples inside – including textured and transparent finish choices.

| | | | | | |
|--|--|--|--|--|--|
|  |  |  |  |  |  |
| RAL1013 Oyster White | RAL2009 Traffic Orange | RAL4001 Red Lilac | RAL5005 Signal Blue | RAL6005 Moss Green | RAL8017 Chocolate Brown |
|  |  |  |  |  |  |
| RAL1015 Light Ivory | RAL3003 Ruby Red | RAL4004 Claret Violet | RAL5013 Cobalt Blue | RAL6024 Traffic Green | RAL8025 Pale Brown |
|  |  |  |  |  |  |
| RAL1003 Signal Yellow | RAL3018 Strawberry Red | RAL5000 Violet Blue | RAL5015 Sky Blue | RAL7001 Silver Grey | RAL9003 Signal White |
|  |  |  |  |  |  |
| RAL1018 Zinc Yellow | RAL3020 Traffic Red | RAL5002 Ultramarine Blue | RAL6002 Leaf Green | RAL7015 Slate Grey | RAL9005 Jet Black |

Optional Transparent Finishes

Aluminum Only



Transparent Green



Copper



Candy Red



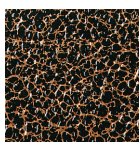
Candy Teal



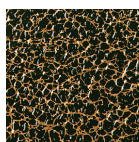
Candy Purple

Optional Textured Finishes

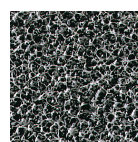
Aluminum Only



PPLS98550
Antique Copper Vein



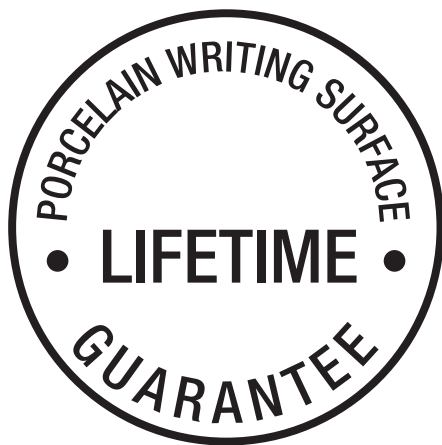
PES98116
Goldtone Vein



PEBS98802
Bonded Silver Vein



800.434.4610
claridgeproducts.com



Claridge®

Under normal usage and maintenance, and when installed in accordance with manufacturer's instructions and recommendations, LCS Porcelain enamel steel markerboard and chalkboard writing surfaces are guaranteed for the Life of the Building.

Guarantee covers replacement of defective boards but does not include the cost of removal or re-installation.



Under normal usage and maintenance, Claridge products are guaranteed for one year.

This guarantee covers repair or replacement of the manufactured parts that fail in materials or workmanship within the specified warranty period. Guarantee covers replacement of defective parts only and does not include cost of removal or re-installation.

SCS Global Services does hereby certify that an independent assessment has been conducted on behalf of:

Claridge Products & Equipment

480 Wrangler Drive
Suite 200, Coppell, 75019, United States

For the following product(s):

See Addendum

The product(s) meet(s) all of the necessary qualifications to be certified for the following claim(s):

Indoor Advantage™ Gold

Indoor Air Quality Certified to SCS-105 v4.2

Conforms to the ANSI/BIFMA Furniture Emissions Standard (M7.1/X7.1-2011 R2021) and ANSI/BIFMA e.3-2024 (Credits 7.6.2, 7.6.3) for the open plan and (Credits 7.6.1, 7.6.2, 7.6.3) private office workstation parameters.¹ Also, conforms to the CDPH/EHLB Standard Method (CA 01350) v1.2-2017 for the open plan and school classroom parameters.¹

¹Modeled as Individual Furniture Components

Registration # SCS-IAQ-09072

Valid from: June 09, 2025 to June 08, 2026



INDOOR ADVANTAGE GOLD
FURNITURE



Diana Kirsanova Phillips, Chief Assurance
Officer,
SCS Global Services

Certification Addendum

Claridge Products & Equipment

Certification: Registration # SCS-IAQ-09072 | Valid from: June 09, 2025 to June 08, 2026

Addendum Indoor Advantage™ Gold

Conformance: Indoor Air Quality Certified to SCS-105 v4.2

Conforms to the ANSI/BIFMA Furniture Emissions Standard (M7.1/X7.1-2011 R2021) and ANSI/BIFMA e.3-2024 (Credits 7.6.2, 7.6.3) for the open plan and (Credits 7.6.1, 7.6.2, 7.6.3) private office workstation parameters.¹ Also, conforms to the CDPH/EHLB Standard Method (CA 01350) v1.2-2017 for the open plan and school classroom parameters.¹

¹Modeled as Individual Furniture Components

Products:

Visual Display Boards:

3300 Series Tackboard, 3400 Series Tackboard, 344 Wave Lectern, 370 Series Recessed Display Case, 390 Large Door Recessed Display Case, 725 Folding Screen, 748 Universal Display Case, 79 Hang-Tight Rail System, 800 Series Markerboard, 800 Series Tackboard, 800 Series Type BR/BL Combo Markerboard Tackboard, 900A Tackboard, 94 Combination Map Rail & Clip Strip, Aceno Room Divider Panels-Base, Aceno Track System, Arise Marker Walls, Arise Markerboard, Aspire Markerboards, Claridge LCS Porcelain, Classic Series Bulletin Board Cabinet, Classic Series Display Case, Concept Markerboard, Concept Tackboard, Connect X2 3 Caster Mobile Markerboard, Connect X2 Combination Markerboard/Tackboard, Connect X2 Full Height Mobile Markerboard Porcelain-Glass, Connect X2 Markerboard Porcelain-Glass, Connect X2 Partial Height Markerboard, Connect X2 Space Creator Porcelain-Cork-Fabric, Connect X2 Tackboard, Contemporary Series Bulletin Board Cabinet, Contemporary Series Bulletin Board Cabinet, Contemporary Style Laminate Lecture Unit, Contio Mobile Markerboard, CS Clip Strips, Cursive Board, Cursive One Markerboard-Tackboard, Custom Printed Glass Boards, Deluxe Series Bulletin Board Cabinet, Deluxe Series Revolving Two-sided Mobile Markerboard, Deluxe Two-sided Mobile Markerboard, Display Case-Cabinet, Economy and Deluxe Map & Display Rail, Edify Mobile Markerboard, EDR Exhibit Rail, Envision Graphics Markerboard, Economy and Deluxe Map & Display Rail, Evolve Markerboard, Evolve Sliding System, Evolve Tackboard, EZ Fit Markerboard Panel, Framed Tackboard, Glass Marker Walls, Glass Markerboards, Horizontal Sliding Markerboards, Imperial Series Bulletin Board Cabinet, Large Contemporary Series Bulletin Board Cabinet, Large Format Glass Marker System, Large Format Porcelain Marker System, LCS Deluxe Markerboard-Aluminum Frame,

Certification Addendum

Claridge Products & Equipment

Certification: Registration # SCS-IAQ-09072 | Valid from: June 09, 2025 to June 08, 2026

Addendum Indoor Advantage™ Gold

Conformance: Indoor Air Quality Certified to SCS-105 v4.2

Conforms to the ANSI/BIFMA Furniture Emissions Standard (M7.1/X7.1-2011 R2021) and ANSI/BIFMA e.3-2024 (Credits 7.6.2, 7.6.3) for the open plan and (Credits 7.6.1, 7.6.2, 7.6.3) private office workstation parameters.¹ Also, conforms to the CDPH/EHLB Standard Method (CA 01350) v1.2-2017 for the open plan and school classroom parameters.¹

¹Modeled as Individual Furniture Components

Products:

Visual Display Boards Continued:

LCS Deluxe Markerboard-Aluminum Frame No Map Rail, LCS Deluxe Markerboard-Wood Frame, LCS Elite Markerboard, LCS Select Markerboard, LCS Wall-Write Marker Wall, LCS-Glass Combo Boards, Magnetic Glass Markerboard, Magnetic Non-Glare Glass Markerboard, Marker Walls, Merit Series Markerboard, Mina Mobile, Mina Space Creator, Non-Magnetic Non-Glare Glass Markerboard, Premier Wall Mounted Display Case, Premiere Freestanding Display Case, Premiere Series Reversible Mobile Markerboard w/ aluminum trim, Profile Frameless LCS Porcelain Markerboard, Revere Series Bulletin Board, Revere Series Bulletin Board Cabinet, Ripple Space Divider Acoustic-Acrylic, Series 1 Markerboard, Series 1 Tackboard, Series 5 Markerboard, Series 5 Tackboard, Series 2 Markerboard, Series 2 Tackboard, Series 2500 Markerboard, Series 3 Markerboard, Series 3 Tackboard, Series 4 Markerboard, Series 4 Tackboard, Series 8 Markerboard, Series 8 Tackboard, Sliding Marker Wall Systems Porcelain-Glass, Switch Markerboard Porcelain-Glass, Switch Mobile Markerboard Porcelain-Glass, Tableau Markerboard Porcelain-Glass, Tableau Tackboard, Tack Wall, TacPads Acoustic Fabric-Wrapped, Trak-it-system, TrimLine Markerboard, Universal Series Bulletin Board Cabinet, Utility A-Frame Mobile Markerboard, Venue Markerboard Porcelain-Glass, Venue Space Divider Porcelain-Glass Acoustic, Venue T-Leg Mobile Markerboard porcelain-Glass, Venue V-Leg Mobile Markerboard Porcelain-Glass, Vertical Sliding Markerboards, Xchange Graphic Board

Excludes products with wood trim. Excludes products manufactured with a cork substrate. Tackboard included are constructed with a fabricork or designer fabric over Duracore or Micore.