

Vertical Sliding System

Floor and Wall-Mounted Sliding Boards



Vertical Sliding Units are custom-built visual communication solutions, providing optimum display surfaces within easy reach for teaching, conferences, and training. The sliding panels and fixed back panels can be LCS Porcelain dry erase markerboard or chalkboard. Mounted on wall or from the floor, panels slide from the sill or tray to top of unit or from the floor to top for floor mounted units. Balanced, lightweight panel construction provides rigidity and eliminates to and fro movement when panels are in use.

- One, two, or three sliding panels
- Magnetic surface
- Resists humidity and fading; won't ghost or stain
- SCS Indoor Advantage Gold certified

Vertical Sliding System

Floor and Wall-Mounted Sliding Boards



SPECIFICATIONS

- Manually or motor operated
- Fixed back panel with 1, 2, or 3 sliding panels and tracks
- Housing, trim and panel edging are extruded aluminum with clear anodize finish; powder coat finish optional
- Sizes for floor mounted available from 10' x 4' to 10' x 16'; wall mounted from 8' x 4' to 8' x 16'; motor operated available for floor mounted only

Claridge LCS Porcelain

- Projection friendly surface that won't ghost or stain
- Accepts magnetic accessories
- LCS Porcelain is SCS Indoor Advantage Gold certified, eco-friendly, and emits no VOC's
- Lifetime warranty

[View Porcelain Highlights HERE](#)

COLORS

- 3 markerboard colors
- 3 chalkboard colors

[View Claridge LCS Porcelain Colors HERE](#)

[LEARN MORE](#)

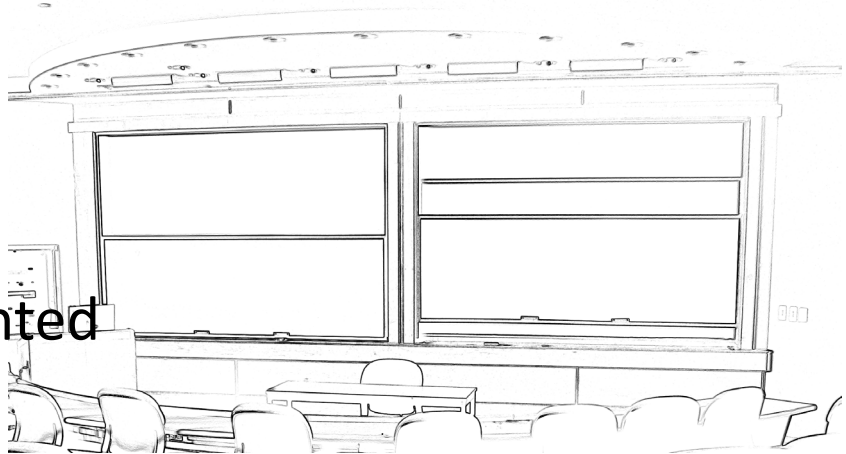


800-434-4610
claridgeproducts.com

V082423



Vertical Sliding System Floor/Wall-Mounted Boards



INSTALLATION INSTRUCTIONS

Parts Layout Identification

The vertical sliding unit is shipped knocked down in the following components:

- Item 1 Top section (head housing with snap front access cover)
- Item 2 Left hand side housing (snap front access cover)
- Item 3 Right hand side housing (snap front access cover)
- Item 4 Fixed back panel
- Item 5 Fixed back panel divider joint (See catalog for maximum board lengths.)
- Item 6 Fixed back panel trim
- Item 7 Sliding panels (counterweight cables attached)
- Item 8 Bottom Sill (Accessory tray assembly, if required, mounted to bottom sill)
- Item 9 Counterweight (2 per sliding panel)
- Item 10 Necessary hardware package – includes: screws, rubber bumpers, cable clamps, etc.

Note: Claridge recommends general maintenance of the cable system. At least annually, depending on usage, we suggest the use of a high end wire rope spray lubricant to be sprayed on all visible cabling. Lubricants are available at most hardware stores.

WARNING

Risk of injury to installers and users

Read the entire assembly directions before beginning assembly.

Vertical Sliding Unit Wall-Mounted Boards

Installation Instructions

Note: Access covers ship installed on head housing and uprights. To remove access covers, first remove screws. Then, starting at one end, pry up access cover, taking care not to damage the face of the upright or head housing. (Use non-marring device.)

Note: One-track vertical has screw-on access cover, not snap on. Once an end is raised, continue to apply leverage the length of the upright. Rotate out to “un-lock” snap mechanism. Remove weight divider(s).

1. Mount bottom sill, Item 8, at desired height, making sure sill is level. Toenail to wall using pre-drilled holes and appropriate anchors.
2. Install top and side housing, items 1, 2, and 3, using enough screws to only temporarily install either the right or left side housing. Side housing must be installed plumb. Width dimension between right and left side housings must not vary more than 1/16” from top to bottom of unit. Blocking may be necessary to support bottom sill prior to removing upright in Step 4. (For motorized units, run wiring from jamb through rubber grommets in head housing.)
3. Drill through top holes of the bottom sill into angles of the upright and insert screws on one side only. (Screws included in hardware package. If installing a motorized unit, installing the right side first would be preferable.) The other side will be installed later.
4. Remove side housing that was temporarily installed in Step 2. (If unit is motorized, remove left side housing as wiring is housed in right side.)
5. Using adhesive, install fixed back panel, Item 4, positioning panel against upright allowing approximately 1/8” clearance at top and bottom. Add divider joint, Item 5, if required, screwing back leg of joint to wall using countersink screws. This insures that back panel snugs against wall and does not interfere with movement of the sliding panel(s). Then install back panel trim, Item 6.
6. Install sliding panels, Item 7, in the following manner:
 - a. Insert right or left edge of sliding panel into track at side housing, taking necessary precaution to protect the limit switches inside the housing.
 - b. Permanently reinstall side housing which was removed in Step 2, inserting edge of side housing track around edge of sliding panel. (Note: Enough clearance must be maintained between the edges of the sliding panel and side housing for the panel to move freely.)
 - c. See notes for threading cables and cable travel layout.
 - d. Create a loop in the cable using cable clamps (two clamps per cable). Loop should be approx. 1- to 2-inch in diameter. Add spring clip. Attach counterweights, Item 12, to spring clip. Top cable clamp should be approx. 2” below the head. Make sure cable is on pulleys in top section. See cable travel layout detail.
 - e. After weights are installed, push panel all the way to top to insure panel ‘tracks’ evenly. Repeat with next panel. Note: Prior to replacing weight cover, test the sliding panel to make sure weight doesn’t hit at the bottom or top. Once test is complete, weight cover and access cover should be replaced. (If unit is motorized, be sure to connect wiring from jamb to head by connecting color coded wires. Colors must match.)
 - f. With sliding panel raised, drill through the top hole of the bottom sill on the side temporarily installed in Step 3.

Note: There is approximately 2-1/2 lbs. of counterweight material at the top of each counterweight that is removable. At the time of shipment the unit is perfectly counter-balanced at the factory. After a period of time, if the unit should need to be re-balanced, this can be done by removing the necessary amount of counterweight material (removing the same amount from both right and left counterweights).



800-434-4610
claridgeproducts.com

Vertical Sliding Unit Floor-Mounted Boards

Installation Instructions

Note: Access covers ship installed on head housing and uprights. To remove access covers, first remove screws. Then, starting at one end, pry up access cover, taking care not to damage the face of the upright or head housing. (Use non-marring device.)

Note: One-track vertical has screw-on access cover, not snap on. Once an end is raised, continue to apply leverage the length of the upright. Rotate out to “un-lock” snap mechanism. Remove weight divider(s).

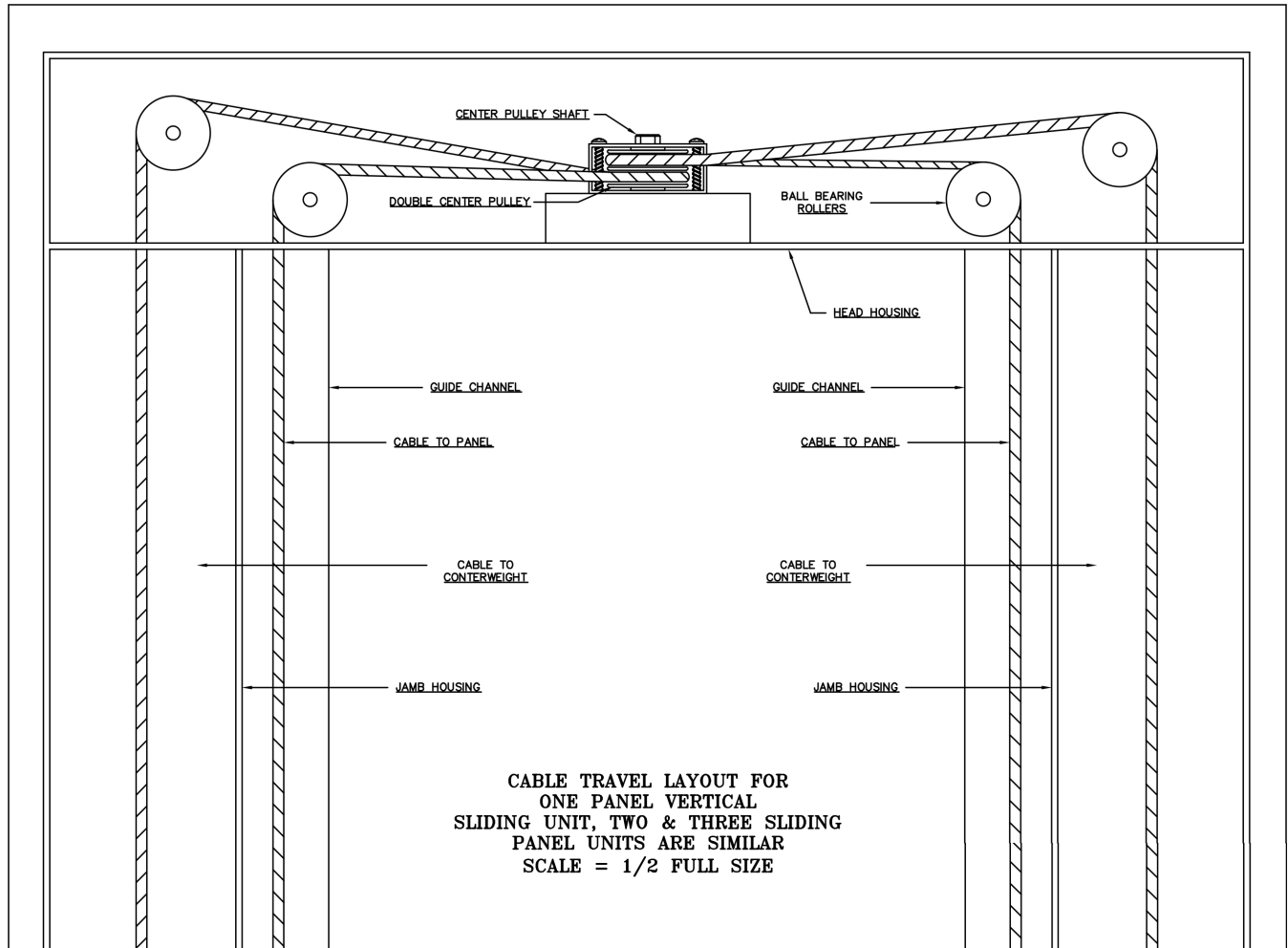
1. Permanently mount 1 side and the head. Then use enough screws to temporarily mount the other upright. (The uprights must be plumb with the head.)
2. Remove side housing that was temporarily installed in Step 2. (If unit is motorized, remove left side housing as wiring is housed in right side.)
3. Using adhesive, install fixed back panel, Item 4, positioning panel against upright allowing approximately 1/8” clearance at top and bottom. Add divider joint, Item 5, if required, screwing back leg of joint to wall using countersink screws. This insures that back panel snugs against wall and does not interfere with movement of the sliding panel(s). Then install back panel trim, Item 6.
4. Install sliding panels, Item 7, in the following manner:
 - a. Insert right or left edge of sliding panel into track at side housing, taking necessary precaution to protect the limit switches inside the housing.
 - b. Permanently reinstall side housing which was removed in Step 2, inserting edge of side housing track around edge of sliding panel. (Note: Enough clearance must be maintained between the edges of the sliding panel and side housing for the panel to move freely.)
 - c. See notes for threading cables and cable travel layout.
 - d. Create a loop in the cable using cable clamps (two clamps per cable). Loop should be approx. 1- to 2-inch in diameter. Add spring clip. Attach counterweights, Item 12, to spring clip. Top cable clamp should be approx. 2” below the head. Make sure cable is on pulleys in top section. See cable travel layout detail.
 - e. After weights are installed, push panel all the way to top to insure panel ‘tracks’ evenly. Repeat with next panel. Note: Prior to replacing weight cover, test the sliding panel to make sure weight doesn’t hit at the bottom or top. Once test is complete, weight cover and access cover should be replaced. (If unit is motorized, be sure to connect wiring from jamb to head by connecting color coded wires. Colors must match.)
5. Place the tray on the angles mounted on the uprights. Drill through the holes on the ends of the tray and secure with the appropriate screws.

Note: There is approximately 2-1/2 lbs. of counterweight material at the top of each counterweight that is removable. At the time of shipment the unit is perfectly counter-balanced at the factory. After a period of time, if the unit should need to be re-balanced, this can be done by removing the necessary amount of counterweight material (removing the same amount from both right and left counterweights).



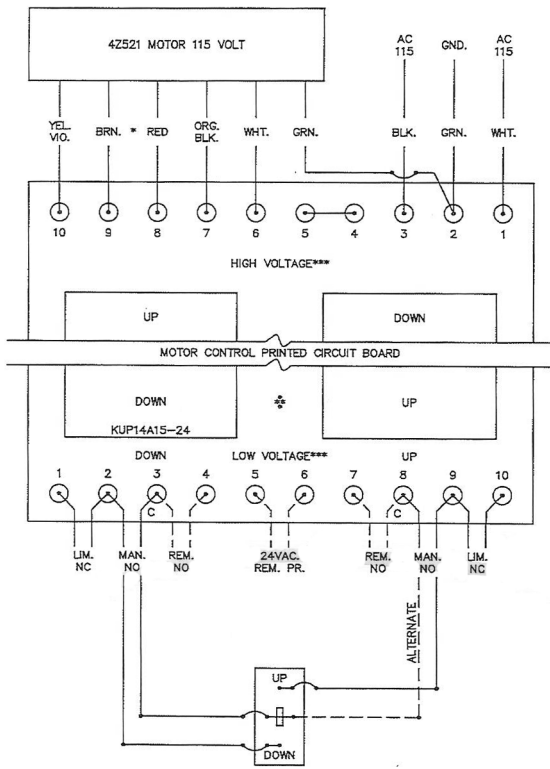
800-434-4610
claridgeproducts.com

Vertical Sliding Unit Cable Travel Layout



800-434-4610
claridgeproducts.com

Vertical Sliding Unit Motor Switch



NOTE

All electrical work should be performed by a licensed electrician for proper motor switch installation.

HIGH VOLTAGE TERMINALS (115 VAC LEVELS) MAY BE IDENTIFIED BY RED JUMPER WIRES ON THE PRINTED CIRCUIT BOARD & POWER RELAYS LOCATED APPROX. 1 1/4" FROM TERMINALS. USE CAUTION WHEN CONNECTING MOTOR AND 115 VAC TO HIGH VOLTAGE TERMINALS. INSURE THAT THE GROUND FROM THE AC SOURCE, PRINTED CIRCUIT BOARD (TERMINAL 2) & MOTOR FRAME ARE SECURE BEFORE OPERATING OR TESTING UNIT.

115 VAC POWER IS SUPPLIED TO PRINTED CIRCUIT BOARD & MOTOR TERM. 1 & 3. MOTOR POWER & DIRECTION IS SUPPLIED ON TERMINALS 6 & 10. TERMINALS 4 & 5 ARE TIED TOGETHER BUT NOT CONNECTED TO THE PRINTED CIRCUIT BOARD. DIRECTION OF MOTOR MAY BE REVERSED BY INTERCHANGING BROWN & RED MOTOR LEADS ON HIGH VOLTAGE TERMINALS 8 & 9. STAND BY POWER IS LESS THAN 10 WATTS. FULL LOAD POWER IS LESS THAN 150 WATTS. THE MOTOR IS RATED 1/15TH HORSEPOWER.

LOW VOLTAGE TERMINALS (24 VAC LEVEL) MAY BE IDENTIFIED BY YELLOW JUMPER WIRES ON THE PRINTED CIRCUIT BOARD & CONTROL RELAYS LOCATED APPROX. 1/2" FROM TERMINALS. ALL CONTROL VOLTAGES LOCATED ON THE LOW UP CONTROLS ARE TERMINALS 7 THRU 10. OPTIONAL WIRELESS REMOTE CONTROL MODULE CONNECTS TO TERMINALS 3 THRU 8.

UNIT SWITCHED ARE NC CONTACTS ON TERMINALS 1 & Z, 9 & 10 MANUAL UP & DOWN, SWITCHES ARE NO CONTACT ON TERMINALS 2 & 3, 8 & 9. CONTACT CURRENT IS LESS THAN 1 AMP AT 24 VAC. TERMINALS 3 & 5 ARE CONNECTED AND MAY BE USED AS COMMON TO MANUAL UP-DOWN SWITCH. OPTIONAL WIRELESS REMOVE CONTROLS UP-DOWN SWITCHES ARE NO CONTACT ON TERMINALS 3 & 4, 7 & 8 WITH POWER FROM TERMINALS 5 & 6.

ALL RELAYS ARE POTTER-BRUMFIELD #KVP14A15-24. THE MOTOR IS GRAINGER #42521 PERM SPLIT PHASE MOTOR WIRED FOR 115/120 VAC. 50-60 HZ.

WIRES TO UNIT SWITCHES ARE COLOR CODED AND MUST MATCH.



800-434-4610
claridgeproducts.com

Standard Color Selections

Select from the 3 standard porcelain or 3 chalkboard colors

LCS Porcelain Colors - use with markers



No. 100 White

No. 101 Light Gray

No. 102 Beige

Chalkboard Colors - use with chalk



No. 500 Green

No. 501 Black

No. 502 Gray

Claridge LCS Porcelain enamel steel markerboard and chalkboard writing surfaces offer unsurpassed durability and performance – a lifetime of performance.

An environmentally friendly process that offers a wide range of decorative and functional colors for use on porcelain markerboards and walls.

- Smooth writing and clean erasing
- Unmatched scratch and stain resistance
- 100% non-combustible surface
- Magnetic surface
- Projection-friendly low gloss LCS surface
- Life of the Building Guarantee
- LCS Porcelain surface is SCS Indoor Advantage Certified

Colors are reproduced with reasonable accuracy, and are for color identification purposes only. If color is critical, contact us at 800-434-4610 to request an actual color sample.



LCS PORCELAIN Markerboard and Chalkboard Features

ENVIRONMENTAL FEATURES

- **SCS Indoor Advantage Certified**

SCS Indoor Advantage certifications are product certification programs for low emitting interior building materials, furnishings and finish systems. SCS Indoor Advantage certified products undergo rigorous testing and must meet stringent standards for low chemical emissions based on established health standards for use in environments such as schools and healthcare facilities.

- **Cradle-to-Cradle™ Bronze Certification**

Cradle-to-Cradle Certification focuses on the characteristics of sustainable materials, products, and systems. The process places emphasis on the human and ecological health impacts of a product's ingredients, and on the ability of that product to be recycled or composted.

Third-party environmental certification assures customers and end users that products selected support healthy indoor air quality and do not emit harmful chemicals. LCS is non-combustible, gives off no toxic gases and is 99.9% recyclable.

CLEANING INSTRUCTIONS

Claridge LCS Porcelain® enamel steel surfaces are guaranteed to withstand the rigors of everyday use. Proper use and maintenance will ensure performance and keep LCS Porcelain markerboards and chalkboards looking like new. Visit claridgeproducts.com for complete cleaning and maintenance instructions.

WRITING SURFACE WARRANTY

Claridge LCS Porcelain enamel steel markerboard and chalkboard writing surfaces offer unsurpassed durability and performance – a lifetime of performance. We are so confident in the quality and dependability of our LCS Porcelain surfaces that we Guarantee it for the Life of the Building!

SPECIFICATION

Claridge markerboard and chalkboard surfaces are manufactured in accordance with PEI-1002 Manual and Performance Specifications for LCS Porcelain Enamel Writing Surfaces. The writing surface is made from steel covered on both sides with enamel coatings. Fusion bonded to the steel, the resulting LCS Porcelain surface is smooth, durable and abrasion-resistant providing the best dry-erase surface available.



CLARIDGE CORK
Color Guide



NO. 1108 MUSHROOM



NO. 1103 OYSTER



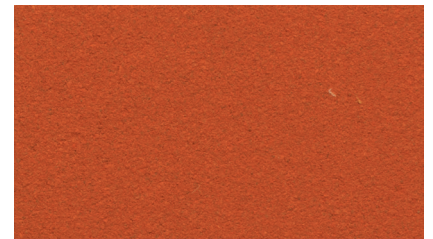
NO. 1117 SALSA



NO. 1109 BUFF



NO. 1111 SMOKE



NO. 1118 TANGERINE



NO. 1110 FAWN



NO. 1113 STEEL GRAY



NO. 1119 PINEAPPLE



NO. 1100 TAN



NO. 1136 GRAPHITE



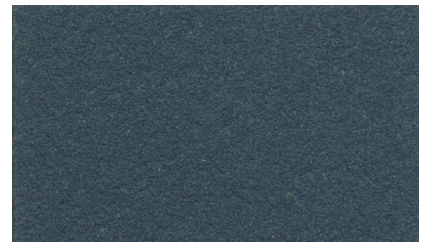
NO. 1120 LETTUCE



NO. 1104 CINNAMON



NO. 1132 BLACK



NO. 1129 BLUEBERRY

Note: Color may vary slightly from samples.



PRODUCT DESCRIPTION

Claridge Cork is made from pure, natural ingredients including linseed oil, pine resin, cork and pigments that are calendared onto a jute backing to create a smooth, suede-like surface of unsurpassed beauty and exceptional durability.

FEATURES

- Environmentally friendly
- Tacks insert easily, are gripped firmly
- Does not crack, peel or crumble
- Washable stain-resistant finish
- Expanded color range - 15 harmonizing colors
- Dimensionally stable
- Meets ASTM E-84, NFPA 258 (fuel contribution) - Class B, and NFPA 255 (critical radiant flux) - Class II
- No toxins - no harmful by-products or emissions
- Low light reflectance
- Naturally inhibits bacterial growth

Note: Features referenced above reflect characteristics of the cork surface only.



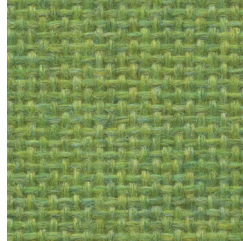
1683 Silver



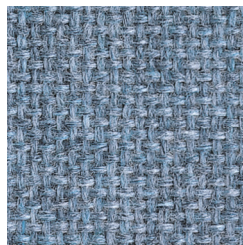
1690 Grey Mix



1685 Flannel



1680 Lime



1689 Wedgewood



1686 Dark Pearl



1692 Wheat



1693 Sunshine



1688 Cobalt



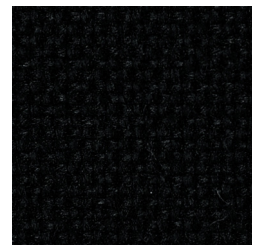
1691 Quartz



1681 Cement Mix



1679 Cardinal



1684 Noir

Please note minimal color shade variations may occur from one dye lot to another.

TACKBOARD FABRICS

FR701® 2100

Specifications

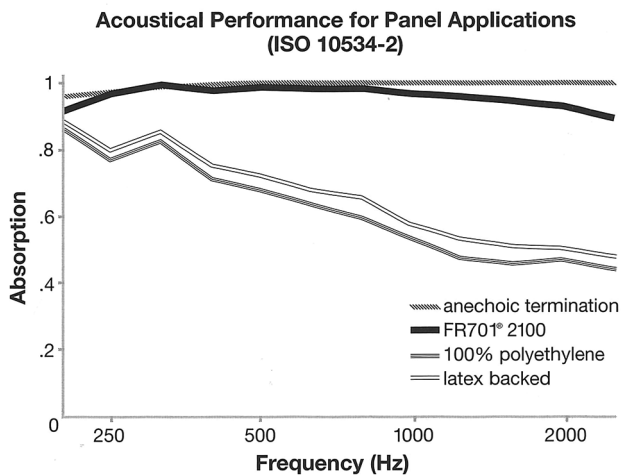
Content 100% post-consumer recycled polyester

Weight 16.0 ± 0.5 oz./lin. yd.

Width 66" min. usable

Acoustical Performance

The plot below summarizes impedance tube measurements of absorption of an anechoic termination and various fabrics in front of the anechoic termination.



NRC of anechoic termination - 1.00

NRC of fabric in front of anechoic termination - .95

Performance



Colorfastness to Light (AATCC 16.3 Option 3)
Grade 4 min. at 40 hours



Colorfastness to Crocking (AATCC 8)
Grade 4 min. dry & Grade 3 min. wet



Breaking Strength (ASTM D5034)
150 lbf min. warp and fill



Flammability (ASTM E84)
Class 1 or A

Cleaning Code

Clean with water based cleaning agents, foam or pure, water free solvents. Vacuuming or light brushing is recommended to prevent dust and soil buildup.

Miscellaneous

Colors may vary between dye lots. This is non-directional fabric. Proudly woven in the USA supporting our local communities.



TerraTex is a registered trademark of Truex Textiles, Inc. and designates fabrics that are made from 100% recycled or compostable material using increasingly sustainable manufacturing practices to produce a high quality product that is recyclable at the end of its useful life.



CO₂ emissions from 100% of the electricity used by the manufacturer to produce this product have been measured and offset in accordance with The CarbonNeutral Protocol.



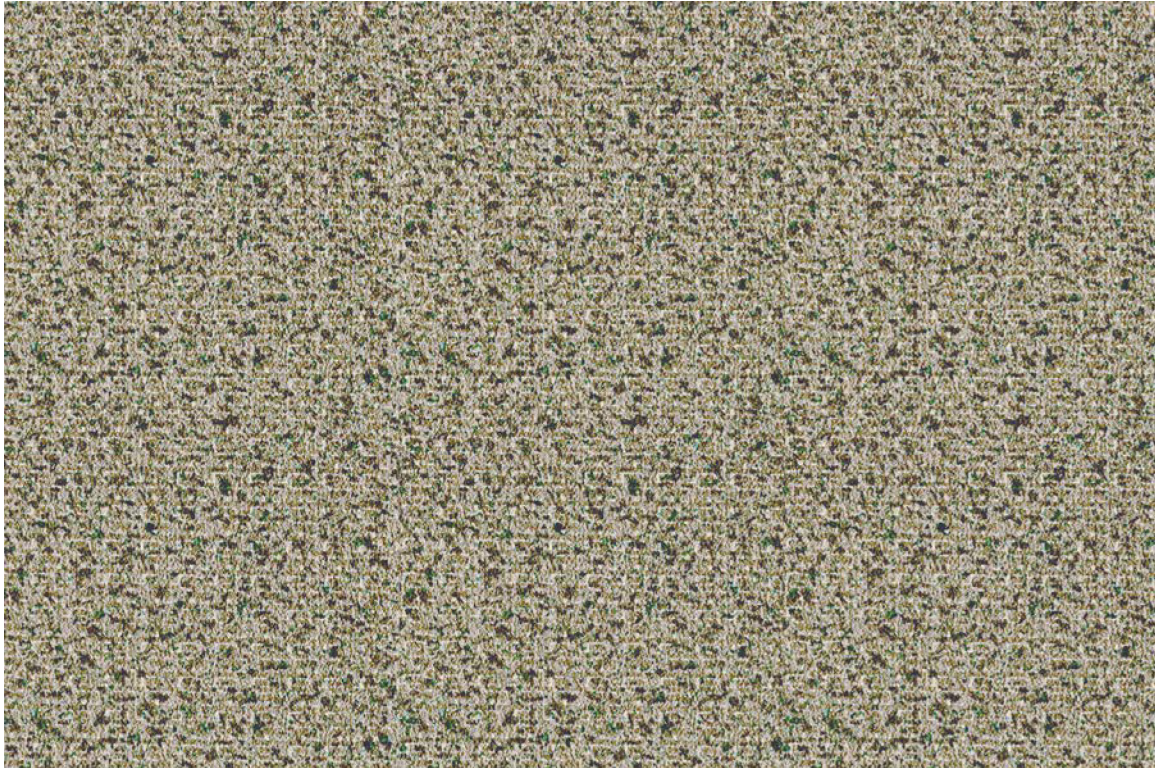
This pattern is included in the underwriters laboratory panel fabric recognition program. Additional testing of this U.L. recognized component fabric is not required on approved panels from participating manufacturers.



800.434.4610
claridgeproducts.com



FABRICORK
Color Options



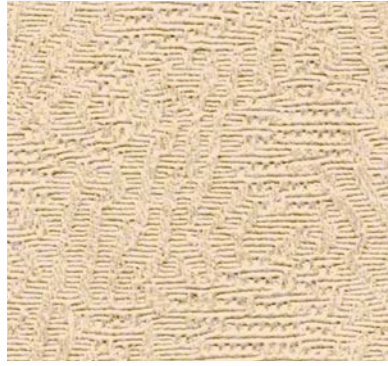
KE584 POWER

Claridge Fabricork Vinyl Bulletin Board is made of vinyl coated fabric that will wear almost indefinitely and stay new-looking for years. Fabricork is entirely washable. Spots and soil wash away with household soap and water.

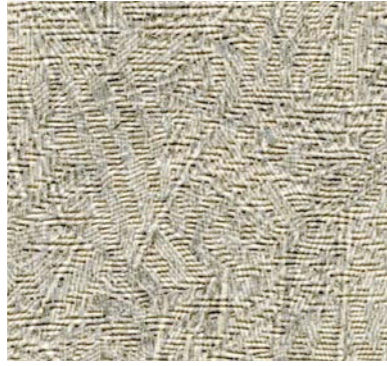
Featuring Koroseal® Wallcovering
Manufactured by Koroseal Interior Products LLC

Please note minimal color variation may occur with each dye lot.

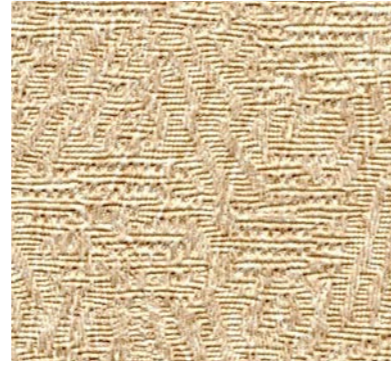
Viewpoint Pattern



KV216 ECRU



KV230 OYSTER



KV241 WHEAT STRAW



KV237 CURRY



KV233 DRIFTWOOD

Esquire Pattern



KE522 INNOCENT



KE592 GENTLEMAN GREY



KE510 RUNWAY



KE584 POWER



KE591 COUNSELOR

Linden Pattern



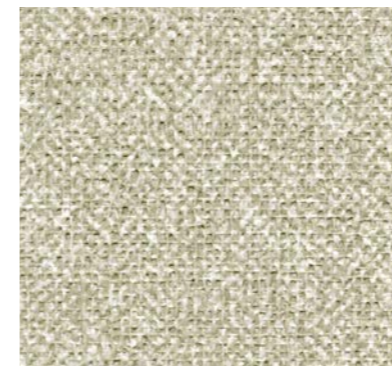
KL490 RECTORY



KL498 WINTHROPE



KL404 DORSET



KL483 DOWNING STONE



KL412 ANCESTRAL

Belair Pattern



KB290 STERLING



KB278 PACIFIC



KB661 DAWN



KB662 GREY



KB664 ANTIQUE



FEATURES

- Meets or exceeds Type 1 requirements in Federal Specification CCC-W-408A
- Manufactured with water based inks and coatings
- Has a water based acrylic top coat for improved cleanability
- Cadmium and Mercury Free
- Meets CA 01350 requirements
- Contains Early Warning Effect[®] Life Safety and Property Protection
- Can be supplied Micro-vented to reduce potential for mold and mildew growth

PATTERNS

- Viewpoint
- Esquire
- Linden
- Belair

PROPERTIES

Total Weight	Viewpoint, Esquire and Linden - 21 oz/linear yd. Belair - 15 oz/linear yd.
Average Thickness	0.017 to 0.021 in.
Tensile (typical)	Viewpoint, Esquire and Linden - 50 x 55 lbf minimum Belair - 30 x 30 lbf minimum
Tear (typical)	Viewpoint, Esquire and Linden - 25 x 25 minimum Belair - 12 x 12 minimum
ASTM E84 Test Results	Class A
Flame Spread	25 or less
Smoke Developed	50 or less

Koroseal Interior Products LLC
Koroseal[®] Wallcovering • www.koroseal.com

Koroseal[®] and Early Warning Effectare[®]
trademarks and registered trademarks of
Koroseal Interior Products LLC.





POWDER COATINGS

Color Guide



An environmentally friendly process that offers a wide range of decorative, functional colors for use on glass markerboards, walls, and metal frames.

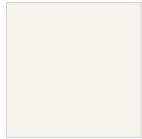
BENEFITS OF POWDER COATING

- More durable than baked enamels
- Delivers a brighter, smoother and cleaner finish
- Environmentally friendly, produces less hazardous waste than conventional liquid coatings
- Color choices are virtually unlimited with custom color matching

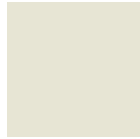
*Colors are reproduced with reasonable accuracy in standard Gloss finish unless noted Matte.
If match is critical, contact us at 800-434-4610 for actual samples*



Powder Coat Colors



RAL9016
Traffic White



RAL9002
Grey White



RAL9018
Papyrus White



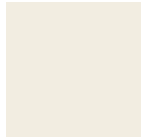
RAL7038
Agate Grey



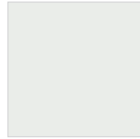
RAL7035
Light Grey



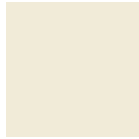
RAL7044
Silk Grey



RAL9010
Pure White



RAL9003
Signal White



RAL9001
Cream



RAL7047
Telegrey 4



RAL7036
Platinum Grey



RAL7045
Telegrey 1



RAL7032
Pebble Grey



RAL7033
Cement Grey



RAL7042
Traffic Grey A



RAL7004
Signal Grey



RAL7046
Telegrey 2



RAL7037
Dusty Grey



RAL7030
Stone Grey



RAL7034
Yellow Grey



RAL7005
Mouse Grey



RAL7040
Window Grey



RAL7012
Basalt Grey



RAL7043
Traffic Grey B



RAL7003
Moss Grey



RAL7013
Brown Grey



RAL7039
Quartz Grey



RAL7006
Beige Grey



RAL7000
Squirrel Grey



RAL7009
Green Grey



RAL7001
Silver Grey



RAL7010
Tarpaulin Grey



RAL7023
Concrete Grey



RAL7002
Olive Grey



RAL7022
Umbra Grey



RAL7011
Iron Grey



RAL6006
Grey Olive



RAL7008
Khaki Grey



RAL7016
Anthracite Grey



RAL7026
Granite Grey



RAL7024
Graphite Grey



RAL7021
Black Grey



RAL1013
Oyster White



RAL1015
Light Ivory



RAL1014
Ivory



RAL1000
Green Beige



RAL1001
Beige



RAL1011
Brown Beige



RAL1002
Sand Yellow



RAL1019
Grey Beige



RAL1020
Olive Yellow



RAL1024
Ochre Yellow



RAL1027
Curry



RAL1032
Broom Yellow



RAL1021
Yellow



RAL1018
Zinc Yellow



RAL1033
Dahlia Yellow



RAL2009
Traffic Orange



RAL2004
Pure Orange



RAL3004
Purple Red



RAL1016
Sulfur Yellow



RAL1012
Lemon Yellow



RAL1034
Pastel Yellow



RAL2010
Signal Orange



RAL2008
Bright Red Orange



RAL3005
Wine Red



RAL1028
Melon Yellow



RAL1023
Traffic Yellow



RAL2000
Yellow Orange



RAL2011
Deep Orange



RAL3002
Carmine Red



RAL3007
Black Red



RAL1003
Signal Yellow



RAL1017
Saffron Yellow



RAL2001
Red Orange



RAL2012
Salmon Orange



RAL3003
Ruby Red



RAL3009
Oxide Red



RAL1004
Golden Yellow



RAL1006
Maize Yellow



RAL2002
Vermilion



RAL3000
Flame Red



RAL3013
Tomato Red



RAL3011
Brown Red



RAL1005
Honey Yellow



RAL1007
Daffodil Yellow



RAL2003
Pastel Orange



RAL3001
Signal Red



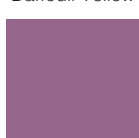
RAL3014
Antique Pink



RAL3012
Beige Red



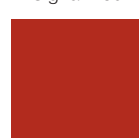
RAL3015
Light Pink



RAL4001
Red Lilac



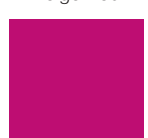
RAL4009
Pastel Violet



RAL3016
Coral Red



RAL4002
Red Violet



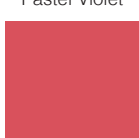
RAL4010
Telemagenta



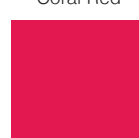
RAL4003
Heather Violet



RAL4005
Blue Lilac



RAL3017
Rose



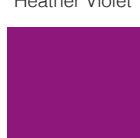
RAL3018
Strawberry Red



RAL3020
Traffic Red



RAL4004
Claret Violet



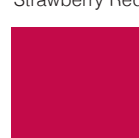
RAL4006
Traffic Purple



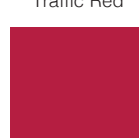
RAL4008
Signal Violet



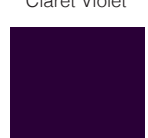
RAL3022
Salmon Pink



RAL3027
Raspberry Red



RAL3031
Orient Red



RAL4007
Purple Violet



RAL5024
Pastel Blue



RAL5007
Brilliant Blue



RAL5000
Violet Blue



RAL5009
Azure Blue



RAL5018
Turquoise Blue



RAL6001
Emerald Green



RAL5015
Sky Blue



RAL5023
Distant Blue



RAL5001
Green Blue



RAL5010
Gentian Blue



RAL5019
Capri Blue



RAL6002
Leaf Green



RAL5017
Traffic Blue



RAL5014
Pigeon Blue



RAL5002
Ultramarine Blue



RAL5011
Steele Blue



RAL5020
Ocean Blue



RAL6003
Olive Green



RAL5005
Signal Blue



RAL5012
Light Blue



RAL5003
Sapphire Blue



RAL5008
Grey Blue



RAL5021
Water Blue



RAL6004
Blue Green



RAL5013
Cobalt



RAL5022
Night Blue



RAL5004
Black Blue



RAL6000
Patina Green



RAL6034
Pastel Turquoise



RAL6005
Moss Green



RAL6007
Bottle Green



RAL6015
Black Olive



RAL6024
Traffic Green



RAL6027
Light Green



RAL6019
Pastel Green



RAL6028
Pine Green



RAL6008
Brown Green



RAL6016
Turquoise Green



RAL6025
Fern Green



RAL6026
Opal Green



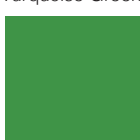
RAL6021
Pale Green



RAL6029
Mint Green



RAL6009
Fir Green



RAL6017
May Green



RAL6011
Reseda Green



RAL6013
Reed Green



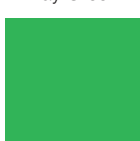
RAL6020
Chrome Green



RAL6032
Signal Green



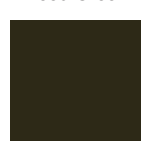
RAL6010
Grass Green



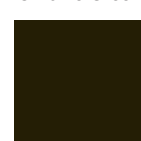
RAL6018
Yellow Green



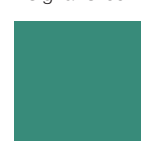
RAL6012
Black Green



RAL6014
Yellow Olive



RAL6022
Olive Drab



RAL6033
Mint Turquoise



RAL8015
Chestnut Brown



RAL8012
Red Brown



RAL8024
Beige Brown



RAL8023
Orange Brown



RAL8002
Signal Brown



RAL8017
Chocolate Brown



RAL8019
Grey Brown



RAL9004
Signal Black



RAL8008
Olive Brown



RAL8003
Clay Brown



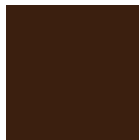
RAL8000
Green Brown



RAL8004
Copper Brown



RAL8016
Mahogany Brown



RAL8014
Sepia Brown



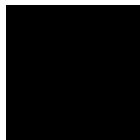
RAL8025
Pale Brown



RAL8001
Ocher Brown



RAL8007
Fawn Brown



RAL8022
Black Brown



RAL9005
Jet Black



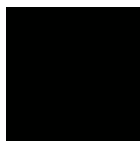
RAL9011
Graphite Black



RAL8011
Nut Brown



RAL8028
Terra Brown








RAL9017
Traffic Black


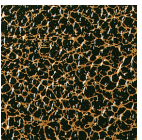
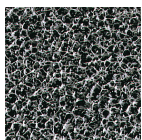
Colors are reproduced with reasonable accuracy in standard Gloss finish unless noted Matte. If match is critical, contact us at 800-434-4610 for actual samples.

Standard Color Selections for Aluminum

Claridge offers the durability and brilliance of powder coat finishes for aluminum framed boards, mobile marker-boards cases, display cabinets and virtually any product offered with a metal or extruded aluminum component. Choose from any of the 24 standard colors shown below, or select from more than a 180 optional powder coat color examples inside – including textured and transparent finish choices.

					
RAL1013 Oyster White	RAL2009 Traffic Orange	RAL4001 Red Lilac	RAL5005 Signal Blue	RAL6005 Moss Green	RAL8017 Chocolate Brown
					
RAL1015 Light Ivory	RAL3003 Ruby Red	RAL4004 Claret Violet	RAL5013 Cobalt Blue	RAL6024 Traffic Green	RAL8025 Pale Brown
					
RAL1003 Signal Yellow	RAL3018 Strawberry Red	RAL5000 Violet Blue	RAL5015 Sky Blue	RAL7001 Silver Grey	RAL9003 Signal White
					
RAL1018 Zinc Yellow	RAL3020 Traffic Red	RAL5002 Ultramarine Blue	RAL6002 Leaf Green	RAL7015 Slate Grey	RAL9005 Jet Black

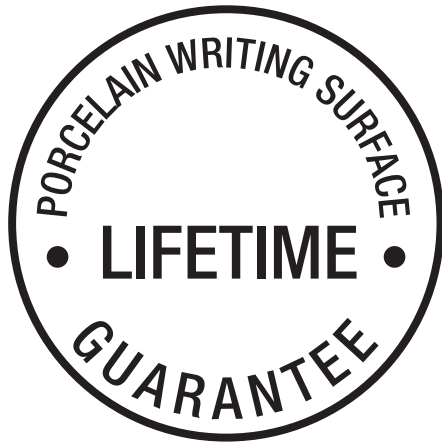
Optional Transparent Finishes					
	Aluminum Only	Transparent Green	Copper	Candy Red	Candy Teal

Optional Textured Finishes			
	Aluminum Only	PPLS98550 Antique Copper Vein	PES98116 Goldtone Vein



800.434.4610
claridgeproducts.com

Claridge®



Under normal usage and maintenance, and when installed in accordance with manufacturer's instructions and recommendations, LCS Porcelain enamel steel markerboard and chalkboard writing surfaces are guaranteed for the Life of the Building.

Guarantee covers replacement of defective boards but does not include the cost of removal or re-installation.



Under normal usage and maintenance, Claridge products are guaranteed for one year.

This guarantee covers repair or replacement of the manufactured parts that fail in materials or workmanship within the specified warranty period. Guarantee covers replacement of defective parts only and does not include cost of removal or re-installation.



SCS Global Services does hereby certify that an independent assessment has been conducted on behalf of:

Claridge Products & Equipment

480 Wrangler Drive, Suite 200, Coppell, TX, United States

For the following product(s):

See Addendum

The product(s) meet(s) all of the necessary qualifications to be certified for the following claim(s):

Indoor Advantage™ Gold

Indoor Air Quality Certified to SCS-EC10.3-2014 v4.1

Conforms to the ANSI/BIFMA Furniture Emissions Standard (M7.1/X7.1-2011 R2021) and ANSI/BIFMA e.3-2019 (Credits 7.6.1, 7.6.2, 7.6.3) for the open plan and private office workstation parameters.¹ Also, conforms to the CDPH/EHLB Standard Method (CA 01350) v1.2-2017 for the open plan and school classroom parameters.¹

¹ Modeled as Individual Furniture Components

Registration # SCS-IAQ-09072

Valid from: June 9, 2023 to June 8, 2024



A handwritten signature in black ink that reads "Stanley Mathuram".

Stanley Mathuram, PE, Executive Vice President
SCS Global Services
2000 Powell Street, Ste. 600, Emeryville, CA 94608 USA

Certification Addendum

Claridge Products & Equipment

Certification: Registration # SCS-IAQ-09072 | Valid from: June 9, 2023 to June 8, 2024

Indoor Advantage™ Gold

Addendum Indoor Air Quality Certified to SCS-EC10.3-2014 v4.1

Conformance: Conforms to the ANSI/BIFMA Furniture Emissions Standard (M7.1/X7.1-2011 R2021) and ANSI/BIFMA e.3-2019 (Credits 7.6.1, 7.6.2, 7.6.3) for the open plan and private office workstation parameters.¹ Also, conforms to the CDPH/EHLB Standard Method (CA 01350) v1.2-2017 for the open plan and school classroom parameters.¹

¹ Modeled as Individual Furniture Components

Products: Visual Display Boards:

213 Series Tackboard with Wood Frame, 309 Sliding Door Display Case, 310 Wood Framed Bulletin Board Cabinet, 3300 Series Tackboard, 3400 Series Tackboard, 344 Wave Lectern, 370 Series Recessed Display Case, 390 Large Door Recessed Display Case, 700 Series Wood, 725 Folding Screen, 742 Freestanding Display Case, 748 Universal Display Case, 79 Hang-Tight Rail System, 800 Series Markerboard, 800 Series Tackboard, 800 Series Type BR/BL Combo Markerboard Tackboard, 900A Tackboard, 94 Combination Map Rail & Clip Strip, Aceno Room Divider Panels-Base, Aceno Storage Cart, Aceno Track System, Arise Marker Walls, Arise Markerboard, Aspire Markerboards, Claridge LCS Porcelain, Classic Series Bulletin Board Cabinet, Classic Series Display Case, Concept Markerboard, Concept Tackboard, Connect X2 3 Caster Mobile Markerboard, Connect X2 Combination Markerboard/Tackboard, Connect X2 Full Height Mobile Markerboard Procelain-Glass, Connect X2 Markerboard Porcelain-Glass, Connect X2 Partial Height Markerboard, Connect X2 Space Creator Porcelain-Cork-Fabric, Connect X2 Tackboard, Contemporary Series Bulletin Board Cabinet, Contemporary Series Bulletin Board Cabinet, Contemporary Style Laminate Lecture Unit, Contemporary Style Wood Lecture Unit, Contio Mobile Markerboard, CS Clip Strips, Cursive Board, Cursive One Markerboard-Tackboard, Custom Printed Glass Boards, Deluxe Series Bulletin Board Cabinet, Deluxe Series Revolving Two-sided Mobile Markerboard, Deluxe Two-sided Mobile Markerboard, Display Case-Cabinet, Economy and Deluxe Map & Display Rail,

Certification Addendum

Claridge Products & Equipment

Certification: Registration # SCS-IAQ-09072 | Valid from: June 9, 2023 to June 8, 2024

Indoor Advantage™ Gold

Addendum Indoor Air Quality Certified to SCS-EC10.3-2014 v4.1

Conformance: Conforms to the ANSI/BIFMA Furniture Emissions Standard (M7.1/X7.1-2011 R2021) and ANSI/BIFMA e.3-2019 (Credits 7.6.1, 7.6.2, 7.6.3) for the open plan and private office workstation parameters.¹ Also, conforms to the CDPH/EHLB Standard Method (CA 01350) v1.2-2017 for the open plan and school classroom parameters.¹

¹ Modeled as Individual Furniture Components

Products: Edify Mobile Markerboard, EDR Exhibit Rail, Envision Graphics Markerboard, Economy and Deluxe Map & Display Rail, Evolve Markerboard, Evolve Sliding System, Evolve Tackboard, EZ Fit Markerboard Panel, Framed Tackboard, Glass Marker Walls, Glass Markerboards, Horizontal Sliding Markerboards, Imperial Series Bulletin Board Cabinet, Large Contemporary Series Bulletin Board Cabinet, Large Format Glass Marker System, Large Format Porcelain Marker System, LCS Deluxe Combo Markerboard-Tackboard w/Wood frame, LCS Deluxe Markerboard-Aluminum Frame, LCS Deluxe Markerboard-Aluminum Frame No Map Rail, LCS Deluxe Markerboard-Wood Frame, LCS Elite Markerboard, LCS Select Markerboard, LCS Wall-Write Marker Wall, LCS-Glass Combo Boards, Magnetic Glass Markerboard, Magnetic Non-Glare Glass Markerboard, Marker Walls, Merit Series Markerboard, Mina Mobile, Mina Space Creator, MIX Biophilic Mobile, MIX Mobile Glass-Porcelain Markerboard, MIX Mobile Markerboard-Tackboard, MIX Wood Framed Markerboard, MIX Wood Framed Tackboard, MLC405 Presentation Easel, Motif Wood Frame Markerboard, Motif Wood Frame Tackboard, Nimbus Multi-Purpose Mobile, Non-Magnetic Non-Glare Glass Markerboard, Premier Wall Mounted Display Case, Premiere Freestanding Display Case, Premiere Series Reversible Mobile Markerboard w/ aluminum or wood trim, Profile Frameless LCS Porcelain Markerboard, Ravina Markerboard Glass-Porcelain, Ravina Tackboard Fabric-Acoustic, Revere Series Bulletin Board, Revere Series Bulletin Board Cabinet, Ripple Space Divider Acoustic-Acrylic, Series 1 Markerboard, Series 1 Tackboard, Series 1100 Wood Framed Markerboard, Series 1100 Wood Framed Markerboard, Series 1100 Wood Framed Tackboard, Series 2 Markerboard, Series 2 Tackboard,

Certification Addendum

Claridge Products & Equipment

Certification: Registration # SCS-IAQ-09072 | Valid from: June 9, 2023 to June 8, 2024

Indoor Advantage™ Gold

Addendum Indoor Air Quality Certified to SCS-EC10.3-2014 v4.1

Conformance: Conforms to the ANSI/BIFMA Furniture Emissions Standard (M7.1/X7.1-2011 R2021) and ANSI/BIFMA e.3-2019 (Credits 7.6.1, 7.6.2, 7.6.3) for the open plan and private office workstation parameters.¹ Also, conforms to the CDPH/EHLB Standard Method (CA 01350) v1.2-2017 for the open plan and school classroom parameters.¹

¹ Modeled as Individual Furniture Components

Products: Series 200 Markerboard, Series 200 Tackboard, Series 2000 Markerboard, Series 2000 Tackboard, Series 2100 Wood Framed Markerboard, Series 2100 Wood Framed Tackboard, Series 2500 Markerboard, Series 2900 Markerboard, Series 3 Markerboard, Series 3 Tackboard, Series 4 Markerboard, Series 4 Tackboard, Series 400 Markerboard, Series 400 Tackboard, Series 4000 Markerboard, Series 4000 Tackboard, Series 500 Markerboard, Series 500 Tackboard, Series 6000 Markerboard, Series 6000 Tackboard, Series 8 Markerboard, Series 8 Tackboard, Series 8000 Markerboard, Series 8000 Tackboard, Sliding Marker Wall Systems Porcelain-Glass, Switch Markerboard Porcelain-Glass, Switch Mobile Markerboard Porcelain-Glass, Tableau Markerboard Porcelain-Glass, Tableau Tackboard, Tack Wall, TacPads Acoustic Fabric-Wrapped, Trak-it-system, TrimLine Markerboard, Universal Series Bulletin Board Cabinet, Utility A-Frame Mobile Markerboard, Venue Markerboard Porcelain-Glass, Venue Space Divider Porcelain-Glass Acoustic, Venue T-Leg Mobile Markerboard porcelain-Glass, Venue V-Leg Mobile Markerboard Porcelain-Glass, Vertical Sliding Markerboards, WDR Wooden Display Rail, Wood Frame Bulletin Board Cabinet, Xchange Graphic Board

Excludes products manufactured with a cork substrate

Tackboard included are constructed with a fabricork or designer fabric over Duracore or Micore.