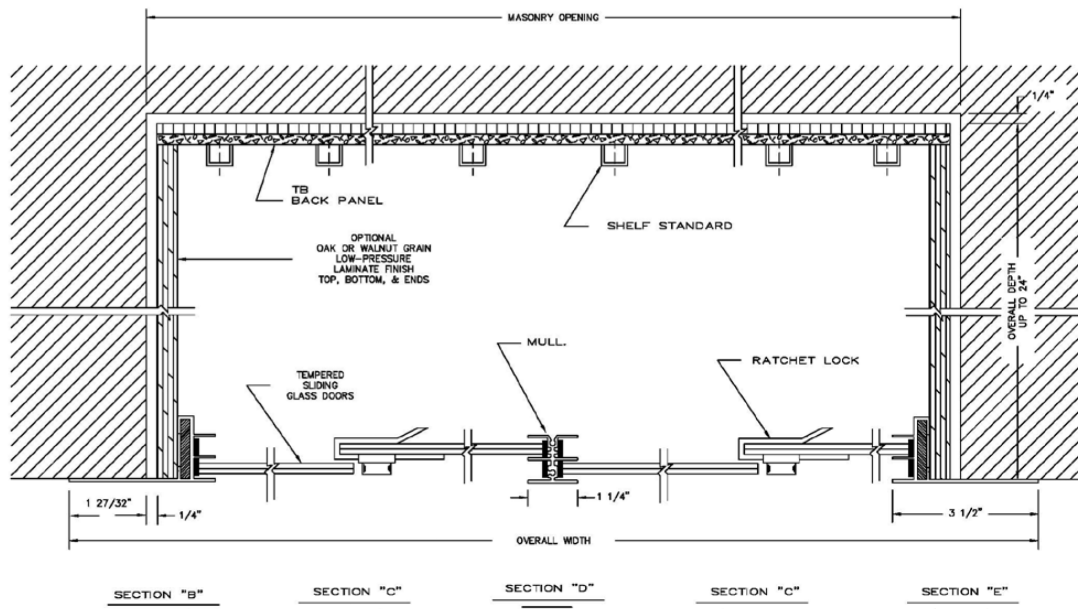


Claridge

370 Series Display Case



INSTALLATION INSTRUCTIONS

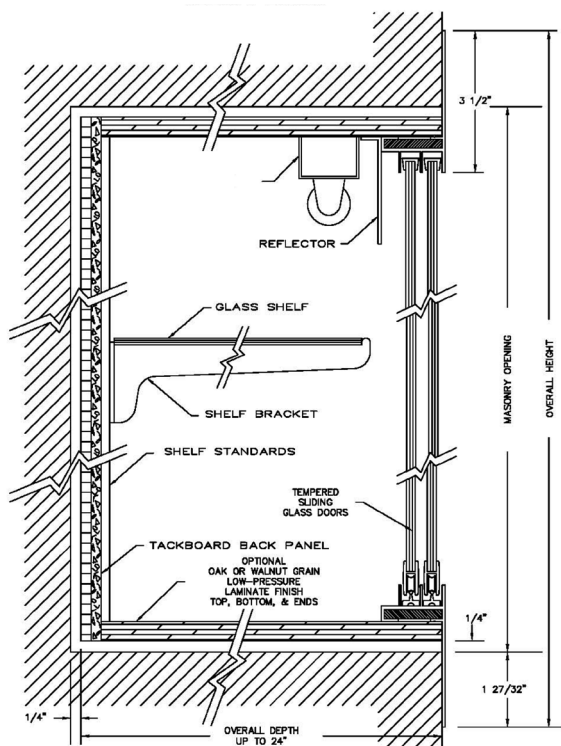


WARNING

Risk of injury to installers and users

Read the entire assembly directions before beginning assembly.

370 Series Display Case

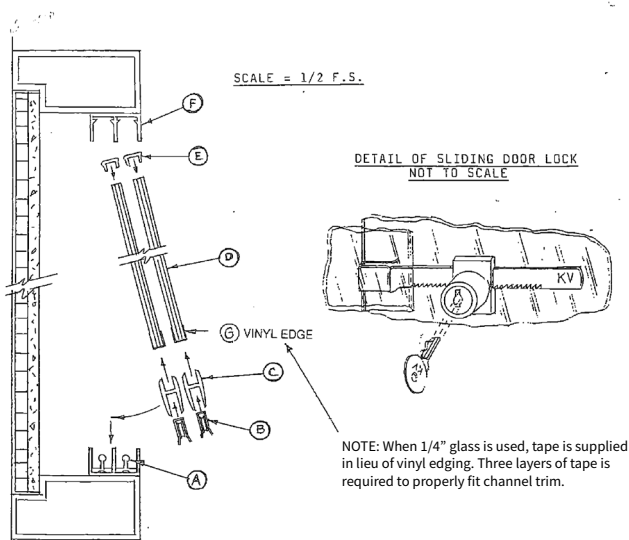


Installation Instructions

1. Lay unit face down on flat surface. (Parts are numbered with matching numbers to fit together.)
Note: If frame is disassembled, reassemble the frame with 3/8" flat head screws.
2. Fasten top, bottom, and ends to case front frame with 3/4" truss head screws, through wood, into frame. (Holes are pre-drilled.)
3. Fasten corners of box together with 1-1/2" pan head screws. (Holes are pre-drilled.)
4. Place back panel on box and fasten with 1-1/2" screws around perimeter of box.
Note: If back panel is disassembled attach the back panel sections to the wood box. Remove the double sided tape backer from the steel strap. Attach the steel strap with 3/8" truss head screws.
5. If shelf standards are not already installed on back panel at factory, install standards with post and screws at pre-drilled holes.
6. If case gets light, install light in case with 5/8" truss head screws (2 per light). Wiring to be done by electrical contractor.
7. Set case into masonry opening and fasten as required per wall conditions. (Fasteners not included.)
8. Install shelf brackets, shelves, glass doors and lock. Case is ready to use.

Sliding Door Installation Instructions

1. Insert door rollers "B" into long portion of "H" shaped aluminum door channel "C" approximately 1 1/2" from each end.
2. Install vinyl glazing "G" on bottom edge of glass doors. Vinyl glazing shipped loose.
3. Slide aluminum door channels "C" onto glass doors "D" at vinyl glazing.
4. Slide rubber door guides "E" onto top of glass doors approximately 1 1/2" from each end.
5. Slip entire door assembly upwards into top track "F" and let rollers "B" rest on round portion of lower track assembly "A".



Claridge

800-434-4610
claridgeproducts.com