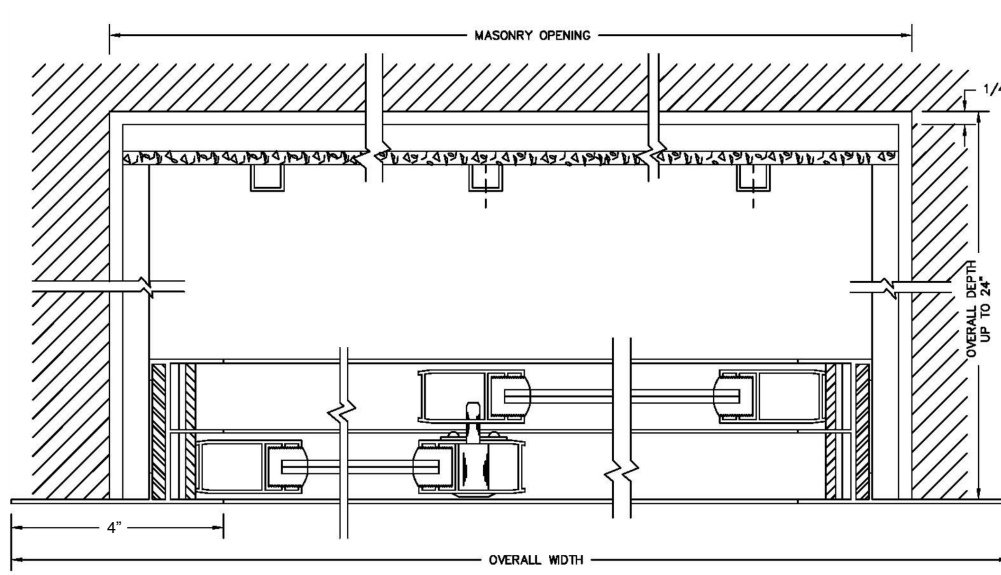


Claridge

390 Series Display Case



INSTALLATION INSTRUCTIONS

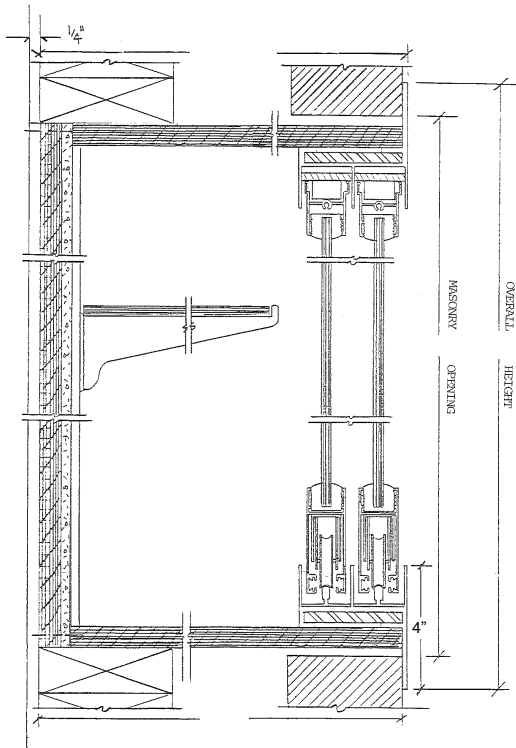


Claridge

800-434-4610
claridgeproducts.com

WARNING
Risk of injury to installers and users
Read the entire assembly directions before beginning assembly.

390 Series Display Case



Installation Instructions

1. Lay unit face down on flat surface. (Parts are numbered for easy matching and fitting together.) **Note:** If frame is disassembled, reassemble the frame with 3/8" flat head screws.
2. Fasten top, bottom, and ends to case front frame with 3/4" pan head screws, screwing through frame into wood box. (Holes are pre-drilled.)
3. Fasten corners of box together with 1-1/4" flat head screws. (Holes are pre-drilled.)
4. Place back panel on box and fasten with 1-1/2" screws around perimeter of box. **Note:** If back panel is disassembled attach the back panel sections to the wood box. Remove the double sided tape backer from the steel strap. Attach the steel strap with 3/8" truss head screws.
5. If shelf standards were not factory-installed on the back panel, install standards with post and screws at pre-drilled holes.
6. If case gets light, install light in case with 5/8" truss head screws (2 per light). Wiring to be done by electrical contractor.
7. Set case into masonry opening and fasten as required per wall conditions. (Fasteners not included.)
8. Install shelf brackets, shelves, glass doors and locks. Case is ready to use.

Claridge

800-434-4610
claridgeproducts.com